



SLELO PRISM

Hemlock Woolly Adelgid Survey Report

Winter 2025 – 26'

Summary

Early Detection Efforts

Each year during the fall and winter months, when hemlock woolly adelgid (HWA)'s white, woolly masses make them more visible, SLELO PRISM searches Highly Probable Areas (HPAs) for the presence/absence of HWA. Hemlock trees are inspected visually, and data is recorded using iMapInvasives' Forest Pest Data Collection Tool in Survey123.

SLELO PRISM staff, NYS Parks Staff, and volunteers completed HWA surveys at 14 properties between January and April 2026. Approximately 234-acres of 15 highly probable areas (HPAs) were surveyed for signs or symptoms of HWA.

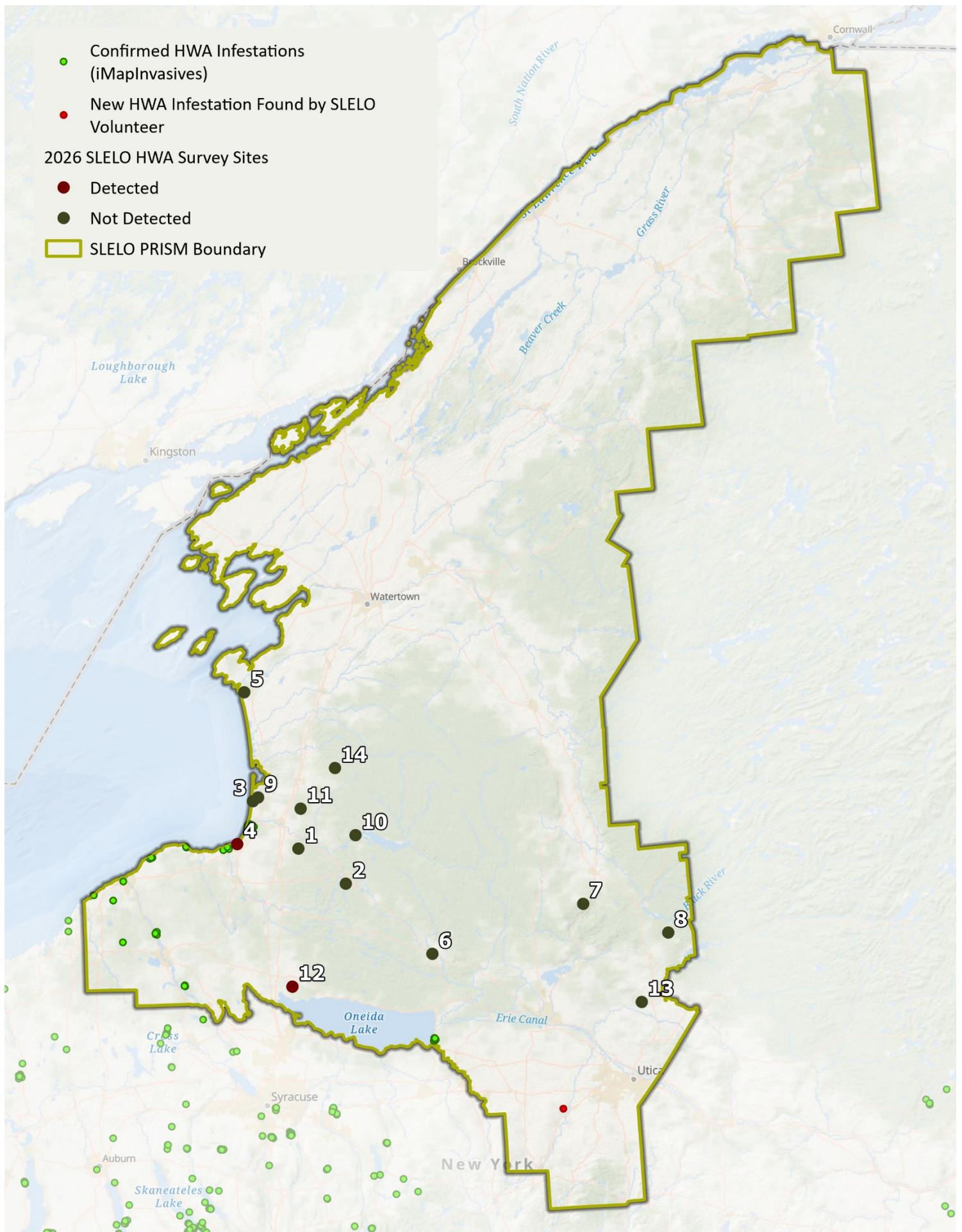
HWA was detected during two of these surveys (Table 1). An additional novel infestation of HWA was detected in the SLELO region this year by a SLELO Volunteer Surveillance Network member at Hamilton College in Oneida County (Map 1). Overall, we are noticing continued spread of HWA mainly along the shoreline in Oswego County and our southern boundary.

Needleminers, moth larvae that feed inside conifer needles, were found at all sites and tip blight, caused by the fungus *Diplodia pinea*, was found at 11 sites.

Winter Mortality

In support of the New York State Hemlock Initiative (NYSHI), SLELO staff also provide support for their annual New York State winter mortality survey. On April 3rd, 2026 the Terrestrial Restoration & Resiliency Coordinator collected two HWA infested twigs from four hemlock trees for a total of eight samples at Independence Park in Oswego County. HWA on these twigs were examined under a microscope to determine the percentage of HWA that were dead or alive. The count determines the HWA winter mortality percentage which varies each year depending on the winter temperatures. This year, the winter mortality was 90.5%. Past winter mortality at Independence Park are as follows: 2022: 89.7%, 2023: 97.3%, 2025: 60.5%. More information about NYS's HWA winter mortality studies can be found on [NYSHI's website](#).

Thank you to NYS Parks and our volunteers for helping us with our HWA surveys this year!



Map 1. Known HWA infestations in New York from iMapInvasives and locations surveyed by SLELO staff in 2026.

Table 1. Summary of SLELO HWA surveys in 2026.

Map Label	Site Name	Date of Survey	Survey Team	# of HPAs Surveyed	Avg. HWA Density	% of Surveyed Trees Infested	Avg. Crown Density	Needleminer Present?	Tip Blight Present?
1	Altmar State Forest	2/24/2026	SLELO Staff	1	No HWA Detected	0	81% to 100%	Yes	Yes
2	Camp Zerbe	3/16/2026	SLELO Staff	1	No HWA Detected	0	81% to 100%	Yes	Yes
3	Deer Creek WMA	2/23/2026	SLELO Staff	1	No HWA Detected	0	81% to 100%	Yes	Yes
4	Derby Hill Bird Observatory	3/5/2026	SLELO Staff	1	5 or less ovisacs/twig	1% to 20%	61% to 80%	Yes	Yes
5	El Dorado/Black Pond WMA	2/4/2026	SLELO Staff	1	No HWA Detected	0	81% to 100%	Yes	Yes
6	Forest Park	3/5/2026	Volunteer	1	No HWA Detected	0	81% to 100%	Yes	No
7	Jackson Hill State Forest	3/3/2026	SLELO Staff	1	No HWA Detected	0	81% to 100%	Yes	Yes
8	Lake Julia	2/17/2026	SLELO Staff	2	No HWA Detected	0	81% to 100%	Yes	No
9	Rainbow Shores Preserve	1/14/2026	SLELO Staff	1	No HWA Detected	0	81% to 100%	Yes	Yes
10	Salmon River Falls	3/20/2026	Volunteer	1	No HWA Detected	0	81% to 100%	Yes	Yes
11	Sandy Creek State Forest	2/5/2026	SLELO Staff	1	No HWA Detected	0	81% to 100%	Yes	Yes
12	Three Mile Bay WMA	3/17/2026	SLELO Staff	1	5 or less ovisacs/twig	1% to 20%	81% to 100%	Yes	Yes
13	Trenton Greenbelt	2/5/2026	Volunteer	1	No HWA Detected	0	81% to 100%	Yes	No
14	Winona State Forest	4/10/2026	SLELO Staff	1	No HWA Detected	0	81% to 100%	Yes	Yes