



Hemlock Woolly Adelgid Survey Report

Winter 2024-2025



Summary

Each year during the fall and winter months, when hemlock woolly adelgid (HWA) egg masses are most visible, SLELO PRISM field representatives search Highly Probable Areas (HPAs) for the presence/absence of HWA. Hemlock trees are inspected visually, and data is recorded using Survey123.

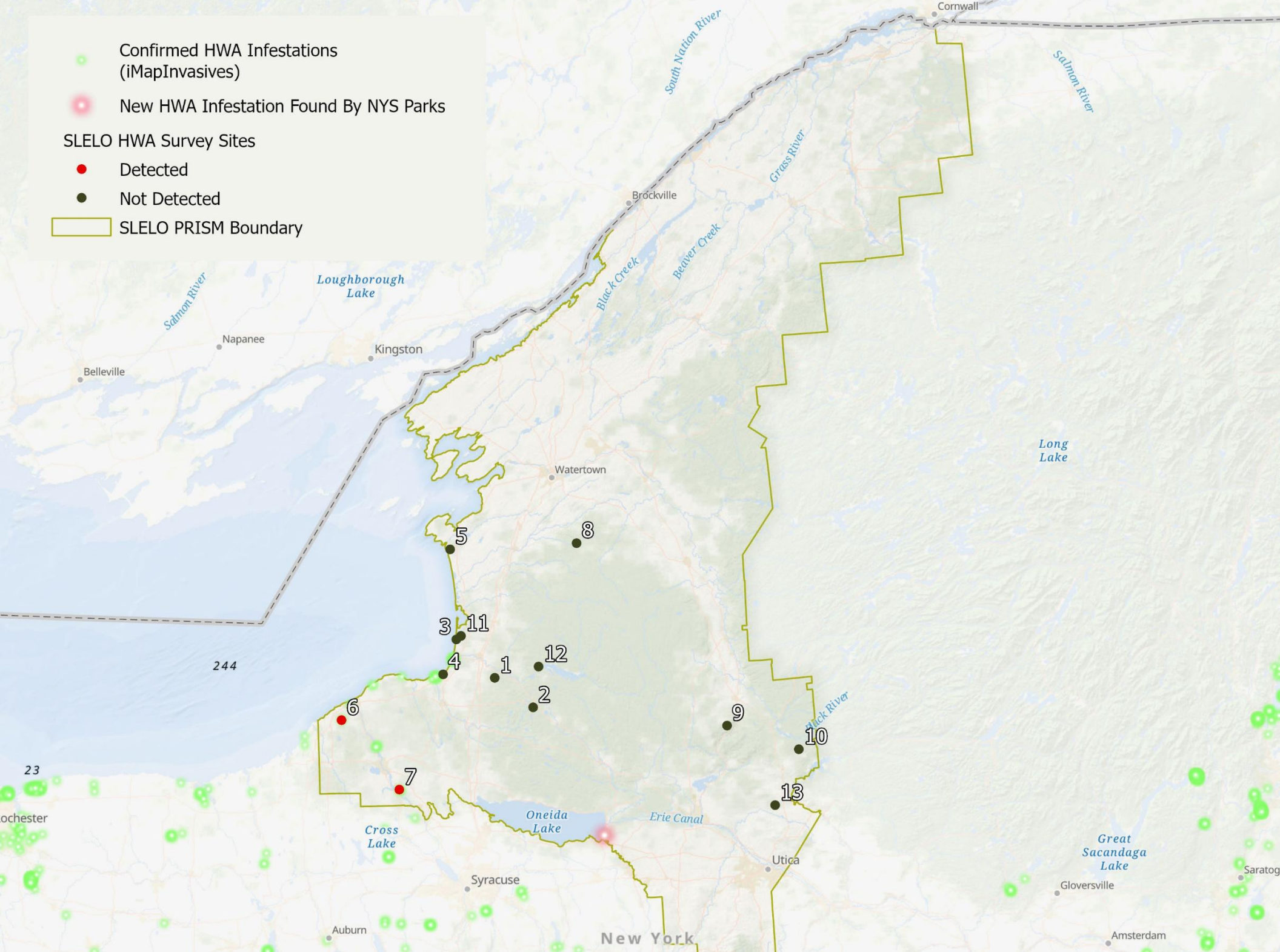
SLELO PRISM staff and volunteers completed hemlock woolly adelgid (HWA) surveys at 13 properties between October 2024 and April 2025. Approximately 320-acres of 15 highly probable areas (HPAs) were surveyed for signs or symptoms of HWA.

HWA was detected at two sites by SLELO staff and volunteers in 2025 (Table 1). An additional novel infestation of HWA was detected in the SLELO region by NYS Parks staff at Verona Beach State Park (Map 1).

Needleminers, moth larvae that feed inside conifer needles, were found at 7 sites and tip blight, caused by the fungus *Diplodia pinea*, was found at 5 sites.

Table 1. Summary of SLELO HWA surveys in 2025.

Map Label	Site Name	Date of Survey	Survey Team	# of HPAs Surveyed	Avg. HWA Density	% of Surveyed Trees Infested	Avg. Crown Density	Needleminer Present?	Tip Blight Present?
1	Altmar State Forest	3/24/2025	SLELO Staff	1	No HWA Detected	0	81% to 100%	Yes	No
2	Camp Zerbe	2/24/2025	SLELO Staff	1	No HWA Detected	0	81% to 100%	Yes	Yes
3	Deer Creek WMA	2/5/2025	SLELO Staff	1	No HWA Detected	0	81% to 100%	No	No
4	Derby Hill Bird Observatory	4/28/2025	SLELO Staff	1	No HWA Detected	0	61% to 80%	No	No
5	El Dorado/Black Pond WMA	1/8/2025	SLELO Staff	1	No HWA Detected	0	81% to 100%	Yes	No
6	Fallbrook	3/7/2025	SLELO Staff	1	5 or less ovisacs/twig	61% - 80%	61% to 80%	Yes	Yes
7	Great Bear Recreational Area	11/15/24 & 1/23/25	Both	2	5-10 ovisacs/twig	1% to 20%	61% to 80%	No	No
8	Inman Gulf	10/30/2024	Volunteer	1	No HWA Detected	0	81% to 100%	No	No
9	Jackson Hill State Forest	4/10/2025	SLELO Staff	1	No HWA Detected	0	81% to 100%	Yes	Yes
10	Lake Julia Preserve	3/14/2025	SLELO Staff	2	No HWA Detected	0	81% to 100%	Yes	Yes
11	Rainbow Shores Preserve	2/5/2025	SLELO Staff	1	No HWA Detected	0	81% to 100%	Yes	Yes
12	Salmon River Falls	1/10/2025	Volunteer	1	No HWA Detected	0	81% to 100%	No	No
13	Trenton Greenbelt	1/17/2025	Volunteer	1	No HWA Detected	0	81% to 100%	No	No



Map 1. Known HWA infestations in New York from iMapInvasives and locations surveyed by SLELO staff in 2025.