

SLELO PRISM REQUEST FOR QUOTES: INVASIVE SPECIES ASSESSMENTS IN TUG HILL TO ADIRONDACKS CORRIDOR

Objective

The Nature Conservancy has entered into an agreement with the NYS Department of Environmental Conservation to host the SLELO PRISM to deliver core functions of an invasive species management program including recovering ecosystem resilience for biological diversity projects, designed to restore native plant assemblages after invasive species management.

SLELO PRISM is focusing many efforts within resilient Connected Lands and Waters (CLAW) regions consisting of wildlife corridors and large-scale connected landscapes and waterbodies that run through the region. Wildlife corridors are narrow tracts of land that serve as a pathway for wildlife and a connection between fragmented habitat areas. These corridors offer safe passages for wildlife to access different vital resources such as food, water, potential mates, and the ability to adapt to climate change.

This assessment will be focused within the Tug Hill to Adirondacks corridor that may be impacted by aquatic, riparian, and terrestrial invasive species. Designed to determine the presence of Tier 1-4 invasive species including but not limited to aquatic invasive species like water chestnut, fanwort and hydrilla and riparian/terrestrial invasives like giant hogweed, invasive knotweed, phragmites, and yellow iris that may affect associated habitat. The results of this assessment study will identify the distribution of invasive species within this corridor and produce reports which will identify and serve as the foundation for future management and restoration work that may need to occur in this area.

Term and Payment:

This agreement is to begin on **March 16, 2026**, and conclude on **November 30, 2026**.

The total quote for this contract shall not exceed **\$20,000**.

Submissions:

Quotes shall include the following:

- Detailed quote for services (see following pages for more details on tasks)
- Information on similar projects (*if any*) subcontractor has worked on that will demonstrate the subcontractor's ability to perform the tasks outlined in this RFQ
- Names, qualifications, and experience of specific members of the project team (*when feasible*)

Please complete in full and submit as a PDF document on [Google forms](#). More information on our CLAW program can be found in the following pages of this document and on [our website](#). Please review supporting information before proceeding with your submission.

The deadline for quotes is **January 6th, 2025, at 11:59PM**

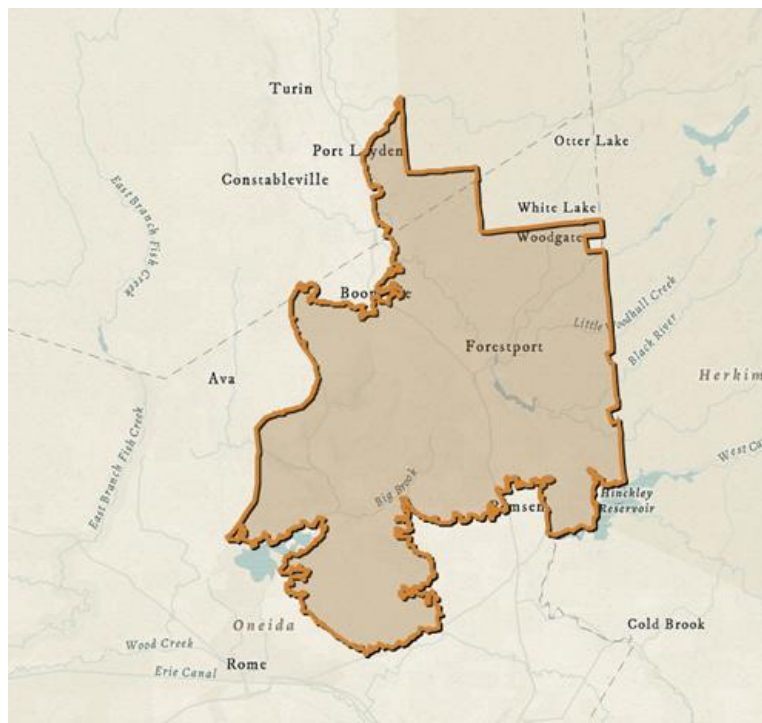
Projects will be reviewed and selected by the PRISM staff. Notice of contract awards will be announced by **January 16th, 2025**. Formal agreements will be subject to approval by TNC and the NYSDEC ISCS.

Email questions to Brittney Rogers, brittney.rogers@TNC.ORG, Invasive Species Program Director



Department of
Environmental
Conservation





Tug Hill to the Adirondacks



This image was borrowed from the Staying Connected Initiative.
Visit our website to learn more about SCI.

TASKS TO BE ACCOMPLISHED BY CONTRACTOR:

- **Task 1: Create and finalize workplan**

- The contractor shall work with SLELO PRISM staff to finalize a workplan, including a literature review, survey plan, and budget for the 2026 project (not to exceed \$20,000) and submit within 30 days of contract award.
- The initial literature review of the selected sites provided by SLELO PRISM may include;
 - historical ecological community records
 - RTE species considerations
 - existing species records with known geographic distributions
 - including records in iMapInvasives, EDDMapS and iNaturalist
 - Invasion pathways, and spread patterns if identifiable
 - Management or restoration work that has occurred
 - Priorities of current land/regional managers
- The survey plan shall include a minimum of nine field survey days (four terrestrial and five aquatic). The primary focus of surveys shall be on all priority Tier 1-4 invasive species with additional field observations as warranted. During fieldwork, the contractor shall use the provided Field Maps or Survey123 survey tools (ex. iMMA, SAS Pro), unless otherwise agreed upon. Observations of invasive species collected during surveys must be reported to iMapInvasives.
 - Terrestrial Sites may include but are not limited to the trails with 50ft buffer in Clark Hill, Penn Mountain, Sand Flats and Popple Pond State Forests.
 - Aquatic and Riparian Sites may include but are not limited to the Kayuta Lake, Lake Julia/Evans Pond, Black River between Port Leyden – Forestport and Kayuta Lake to Little Black Creek, Mohawk River between West Branch and Westernville (final sections selected depending on access and river conditions identified during literature review), and Hinckley Reservoir
 - *Following the initial literature review and site assessments, final locations will be selected and agreed upon by the contractor and SLELO PRISM.*

- **Task 2: Aquatic field surveys**
 - The contractor will work closely with SLELO PRISM to complete aquatic survey tasks at agreed upon sites in Task 1. Field days will include a minimum of 8-hour days including travel (limited to two hours of driving per day). The contractor will complete field days with a minimum of a two-person crew utilizing a motorboat or canoe / kayaks. These efforts will use a combination of visual surveys and rake toss sampling techniques paired with sonar recording along the shoreline and across the littoral zones of the areas of water surveyed. For each waterbody, the contractor shall;
 - Delineate any AIS infestations using iMMA or SAS Pro
 - Report all found species (including native) on the lake and IS in adjacent riparian areas
 - Create a basic map of the waterbody in GIS format
- **Task 3: Terrestrial field surveys**
 - The contractor will work closely with SLELO PRISM to complete terrestrial survey tasks at agreed upon sites in Task 1. Field days will include a minimum of 8-hour days including travel (limited to two hours of driving per day). For each terrestrial site, the contractor shall;
 - Delineate all invasive species infestations encountered using iMMA, including abundance and distribution
 - Report ecologically significant native species found when feasible
 - Create a basic map of the surveyed location in GIS format
- **Task 4:** The contractor shall submit two reports; mid-contract progress report and final report, and one presentation during the Autumn Partner Meeting (to be held in November 2026).
 - Mid-Contract report shall include:
 - Final Workplan and literature review results as outlined in Task 1
 - Summary of progress on survey sites completed to date
 - Digital photos of work throughout the project to be used in reports, SLELO PRISM social media and website (minimum of 5 photos to be submitted)
 - Due July 31
 - Final report shall include:
 - Final Workplan and literature review results as outlined in Task 1
 - Assessment summary and results for each waterbody and terrestrial site
 - Comprehensive list of invasive species encountered at each site, listed using the SLELO PRISM Tiered Species List
 - Digital photos of work throughout the project to be used in reports, SLELO PRISM social media and website (minimum of 30 photos to be submitted)
 - Recommendations for management of invasive species encountered and restoration opportunities to improve habitat impacted by invasive species
 - Recommendations should consider impacts from changing climatic conditions, provide baseline data for measuring changes or results of restoration work, lessons learned and potential transferability for other organizations to replicate work

TASKS TO BE ACCOMPLISHED BY THE NATURE CONSERVANCY

- The Conservancy shall coordinate with the contractor regarding approval of task deliverables and initial work plan.
- The Conservancy shall assist the contractor in securing access to the property for the activities specified within the final Scope of Work.
- The Conservancy shall disseminate the final project report and recommendations to partners as necessary.