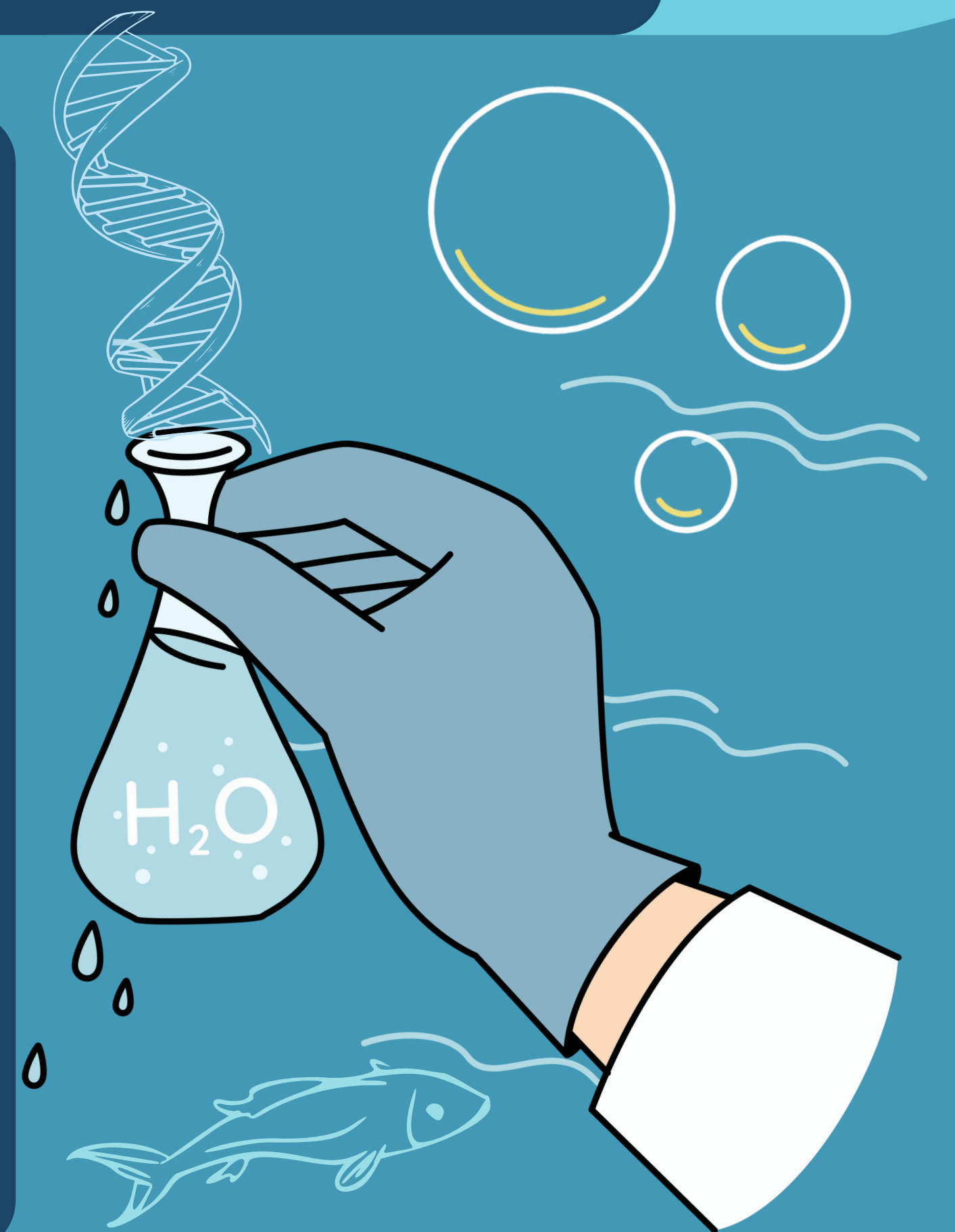


eDNA as an Early Detection Tool

Environmental deoxyribonucleic acid, or eDNA is genetic material from living organisms that is found in the environment

- Aquatic Invasive Species (AIS) can be detected at the molecular level by collecting and filtering water samples to capture eDNA and analyzing samples through a process that detects genetic material called QPCR.



Detecting AIS at a molecular level enhances our ability to manage AIS before they become widespread.

since 2016, SLELO PRISM has been using eDNA as an early detection tool for native and invasive aquatic species. Learn more about our work at sleloinvasives.org/edna.

