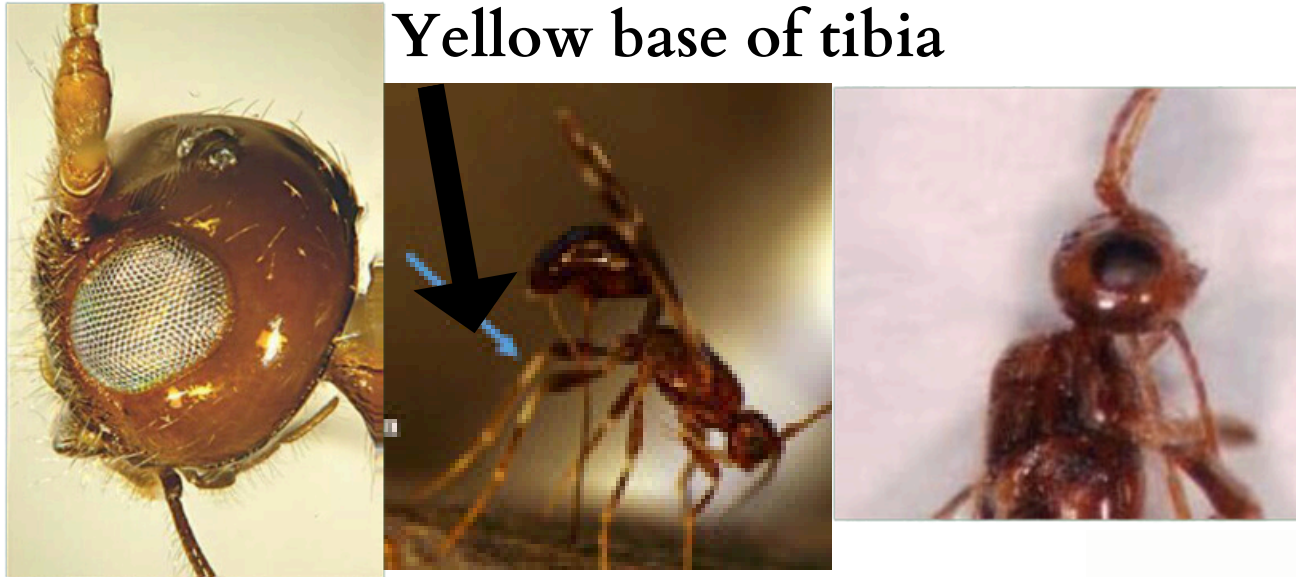
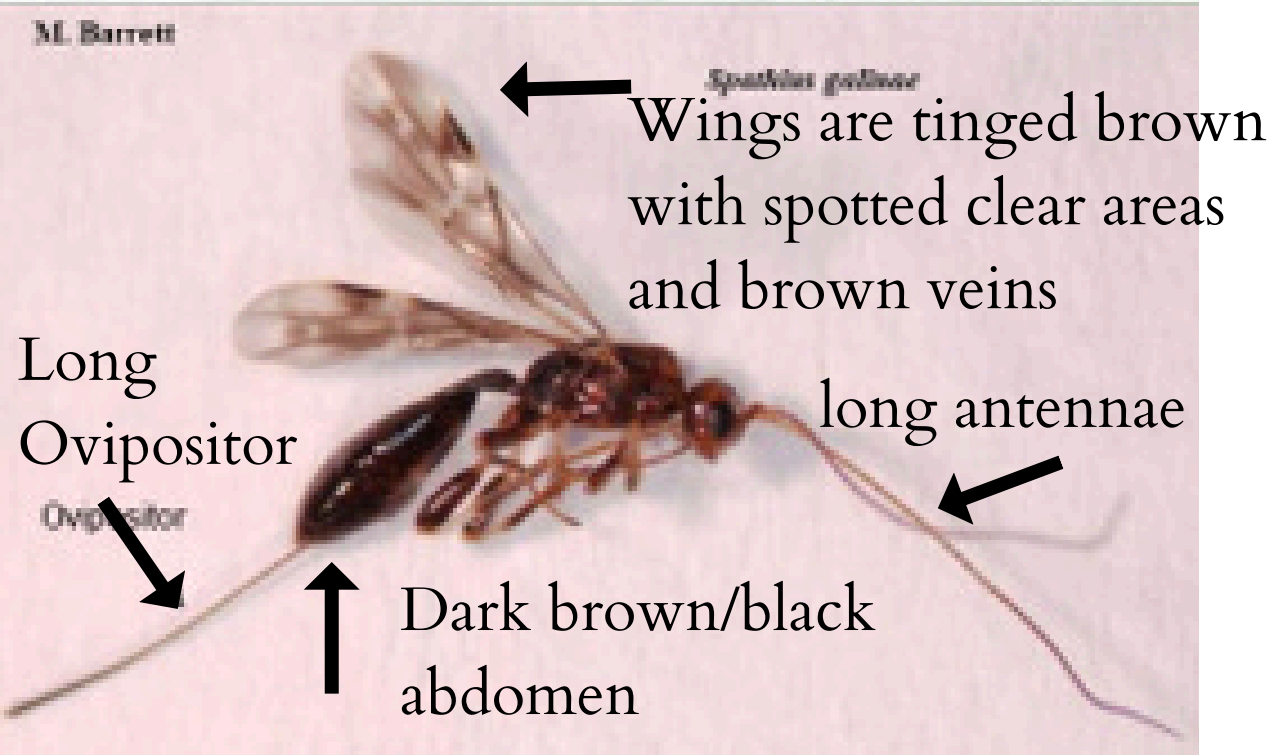
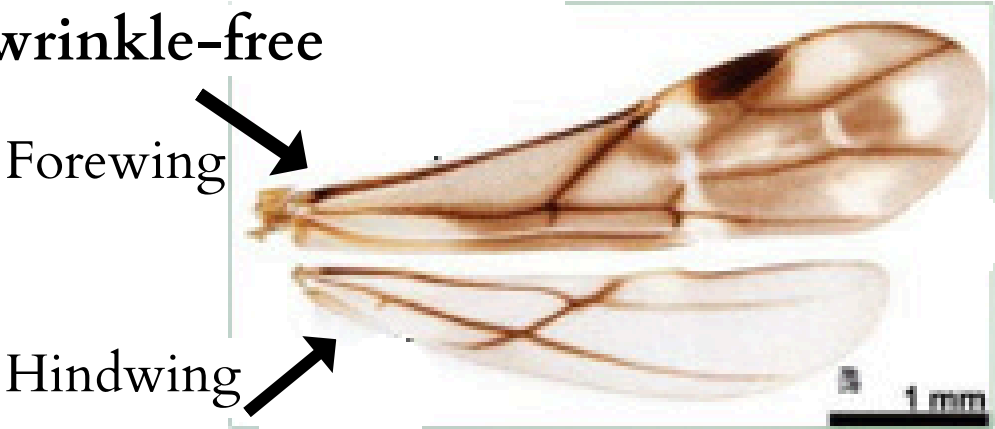


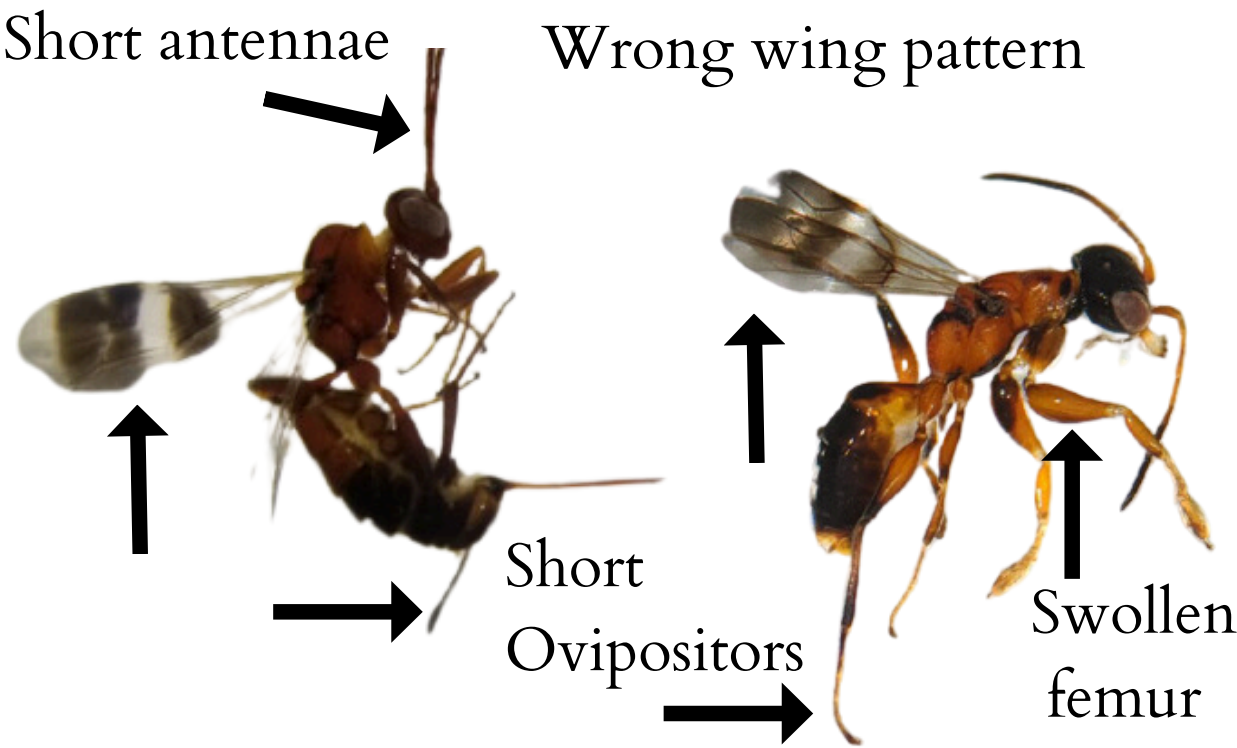
# *Spathius galinae* (Biocontrol)



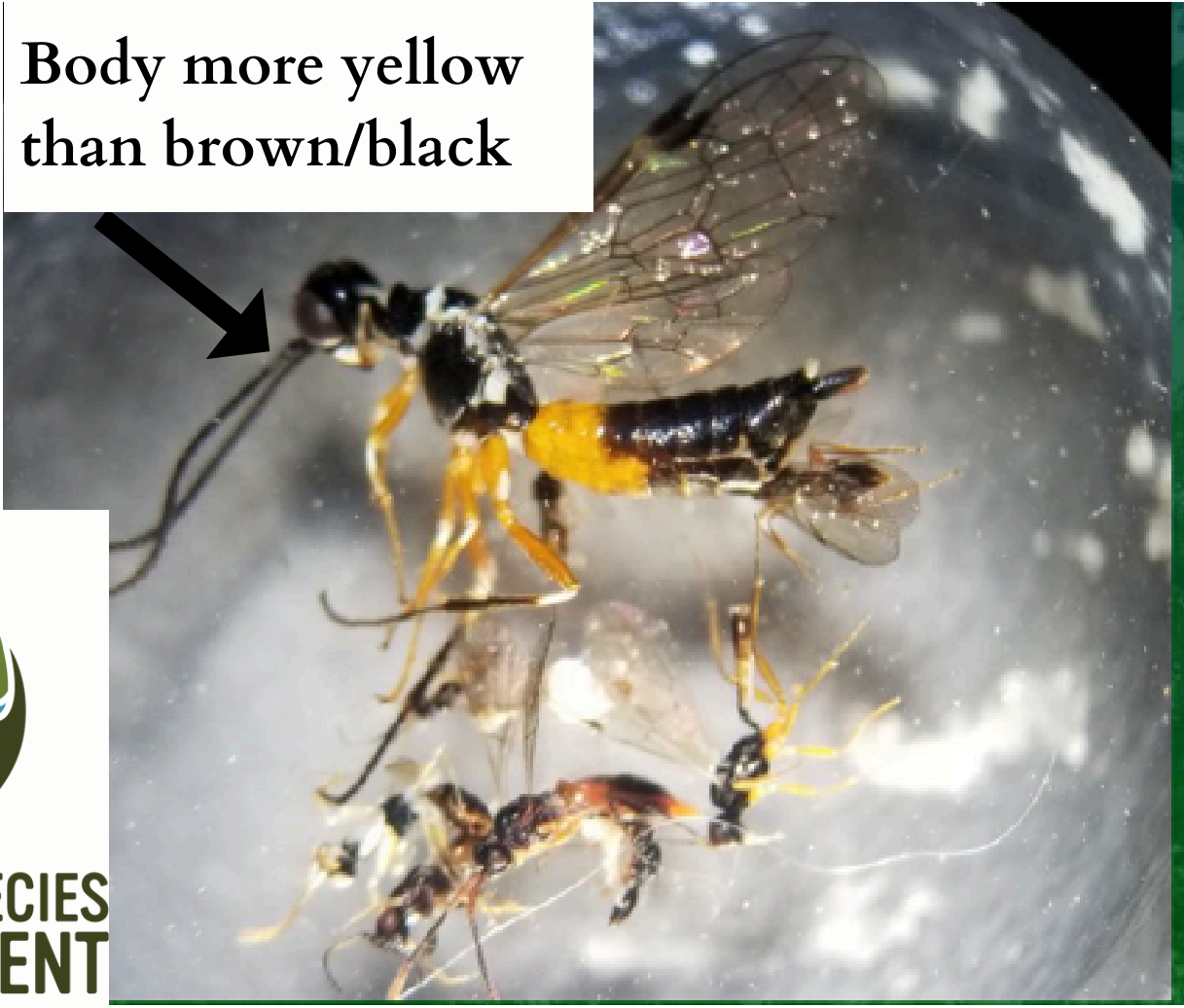
Head is spherical, smooth and wrinkle-free



## Look Alike Species

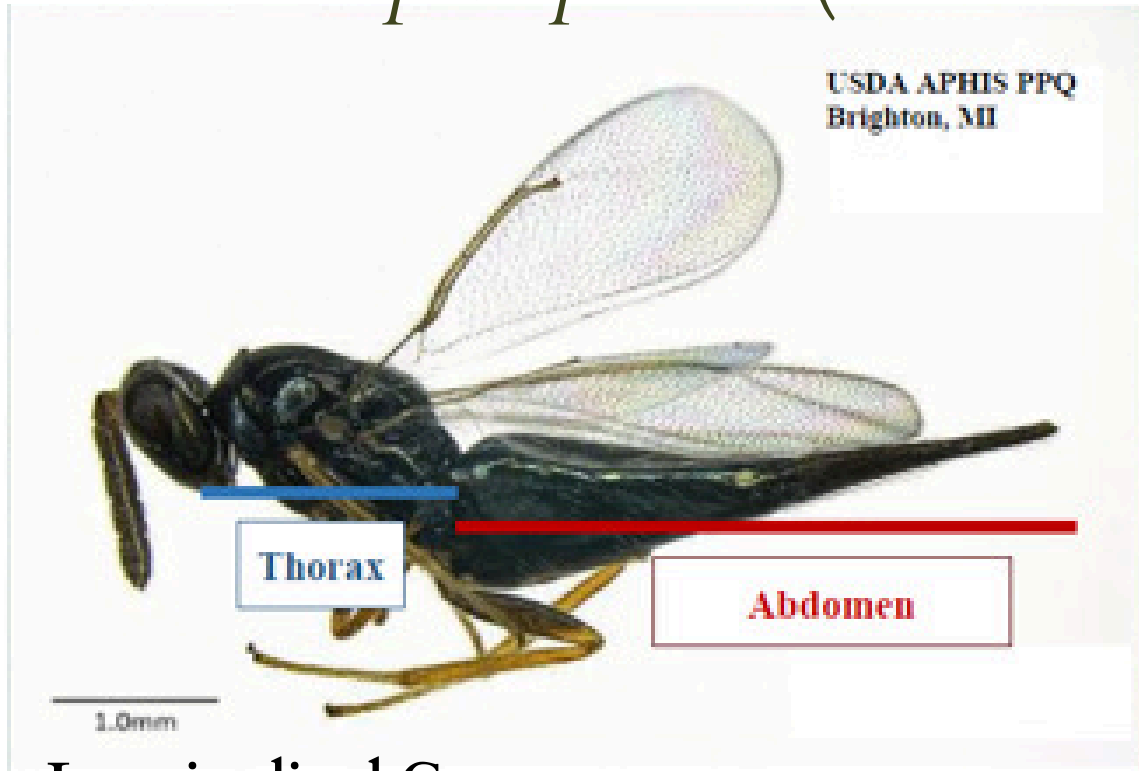


Body more yellow than brown/black

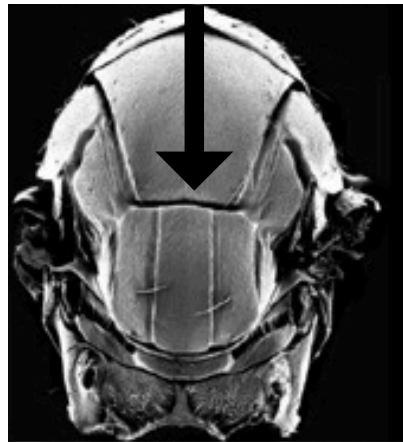




# *Tetrastichus planipennisi* (Biocontrol)

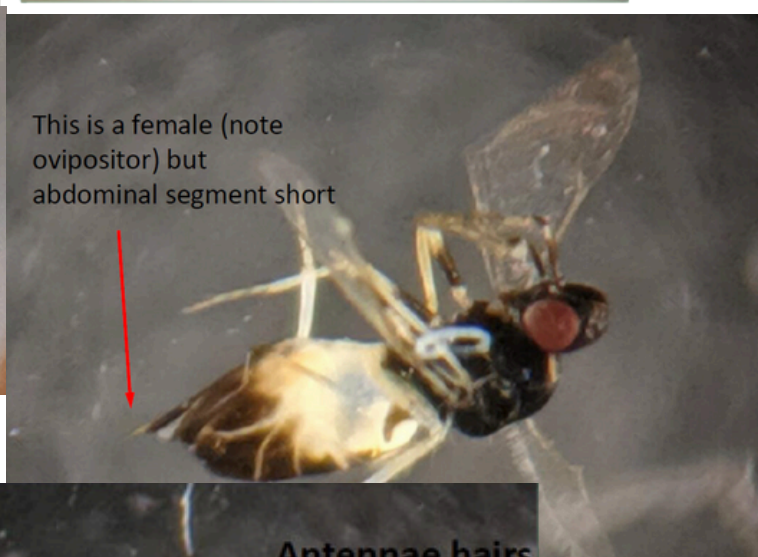
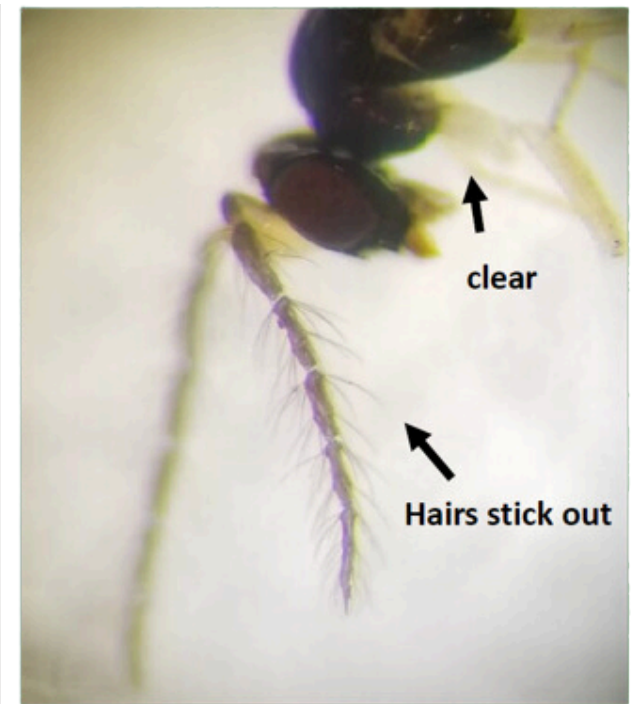


Longitudinal Grooves



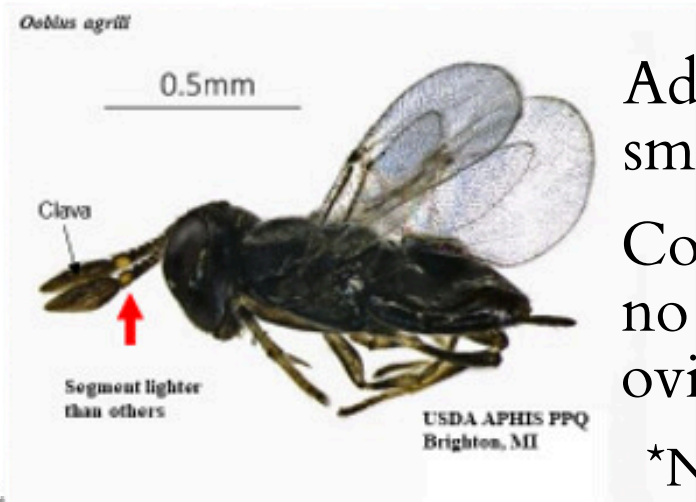
**INVASIVE SPECIES MANAGEMENT**  
SAINT LAWRENCE  
EASTERN LAKE ONTARIO

## Look Alike Species



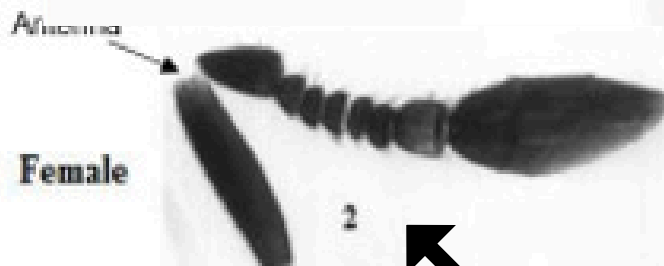


# *Oobius agrili* (Biocontrol)

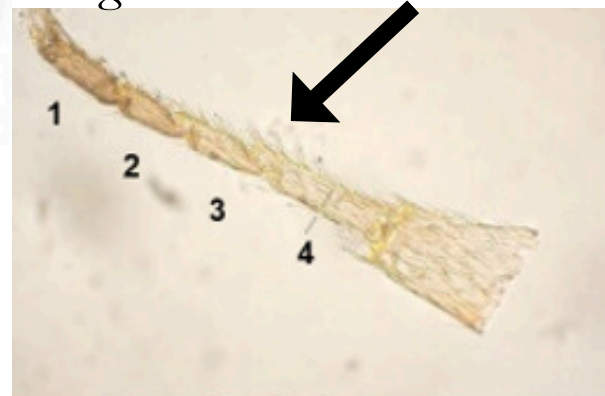


Adults are very small, 1-2 mm long  
Compact stout bodies, no waist, with short ovipositor.

\*Native *Oobius* have 5 segments on foot, while *O. agrili* have 4.



Antennae are elbowed



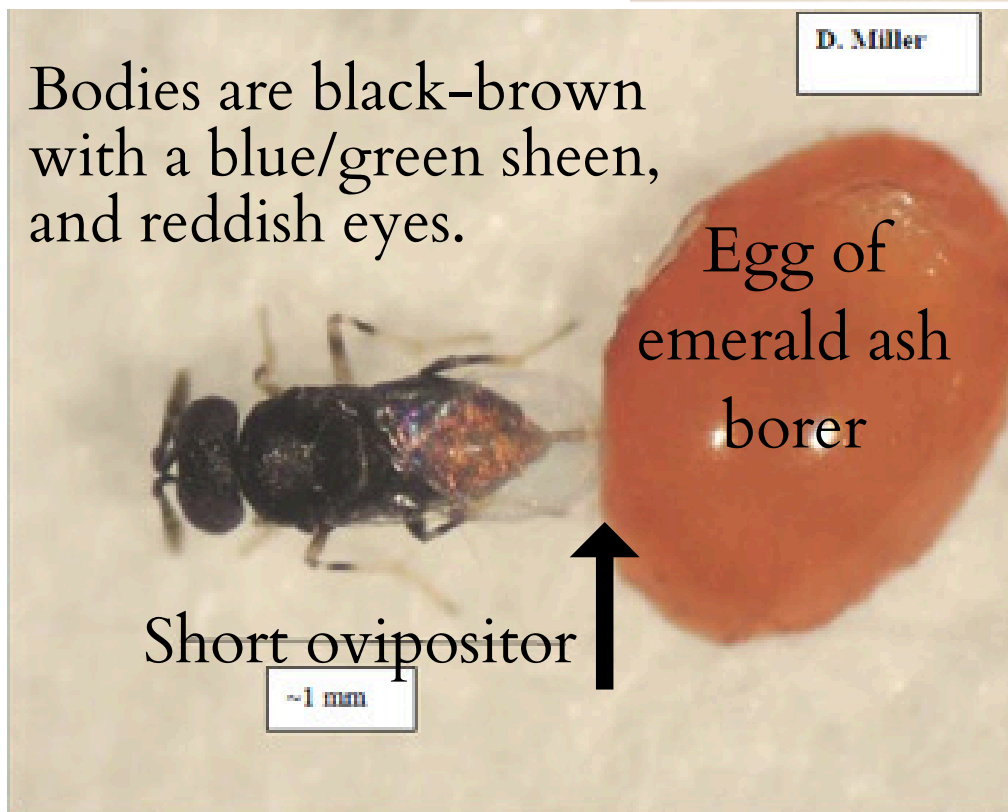
Bodies are black-brown with a blue/green sheen, and reddish eyes.

D. Miller

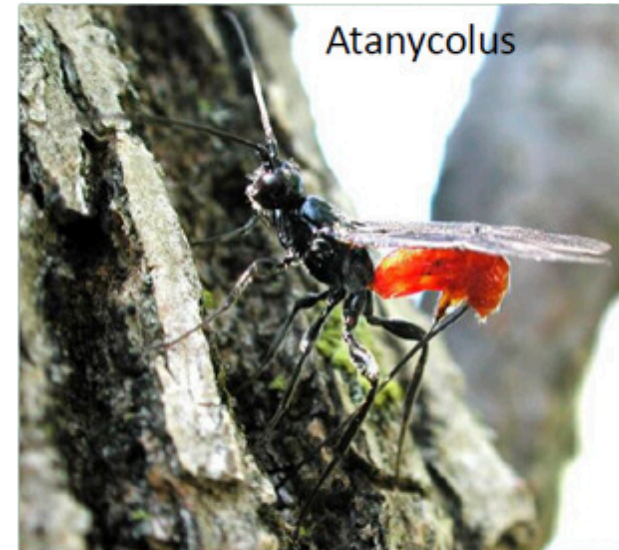
Egg of emerald ash borer

Short ovipositor

~1 mm



## Native/Naturalized Species You Might See



*Atanycolus* spp.

- Red/orange abdomen
- Black head/thorax



*Balcha indica*

- Black head/abdomen
- Brown/yellow marked legs



*Agrilus subcinctus*

- Dark brown with white markings.



*Agrilus* spp. from YPT

*Agrilus* spp.

- Similar body shape as emerald ash borer



*Phasgonophora sulcata*

- Red/orange section on abdomen



**INVASIVE SPECIES  
MANAGEMENT**  
SAINT LAWRENCE  
EASTERN LAKE ONTARIO