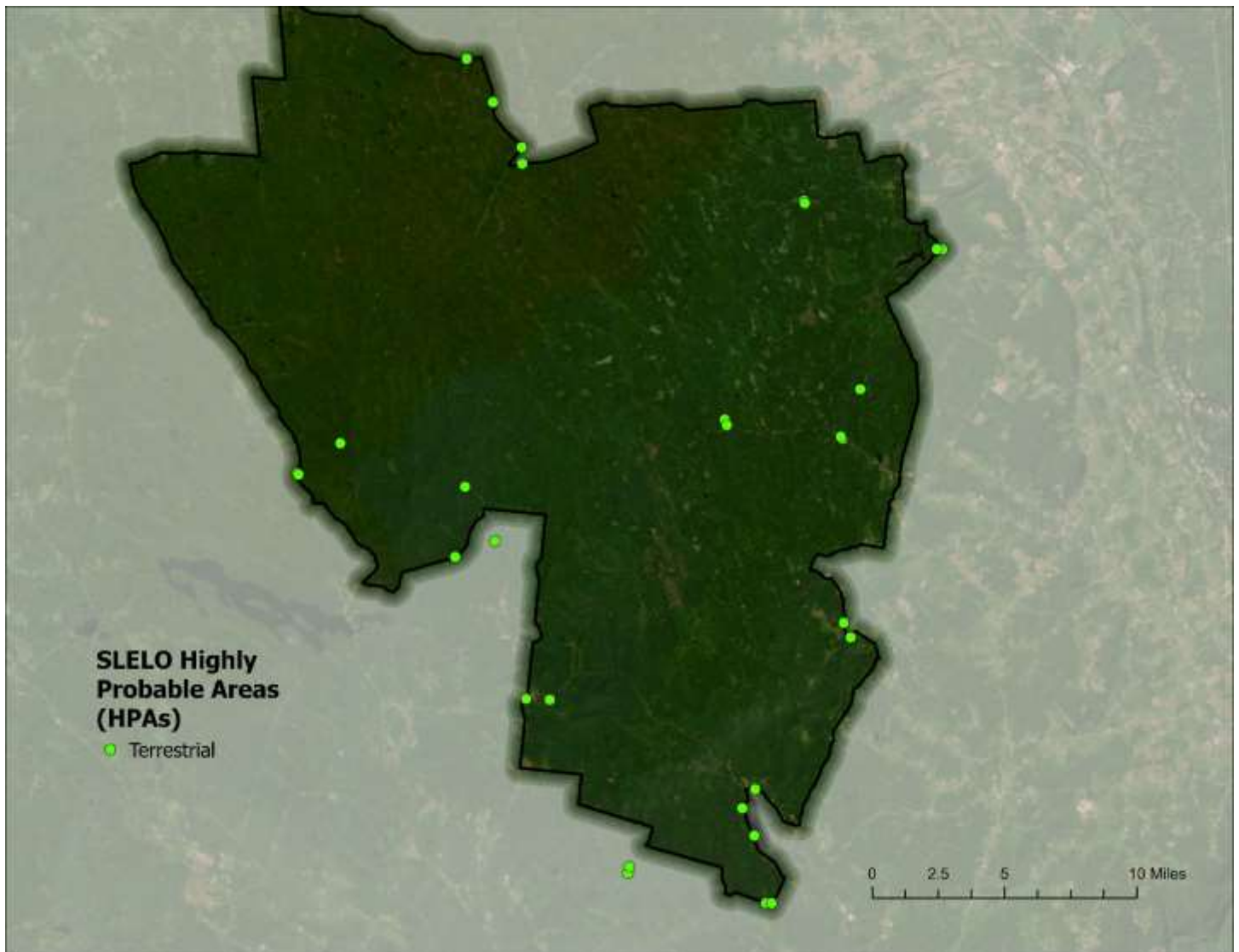


# Tug Hill ISPZ

The Tug Hill ISPZ PCA was surveyed for terrestrial invasive species in August and September by Brittney Rogers and Robert Smith. SLELO staff surveyed 31.38 acres of 31 HPA's for terrestrial invasive species using visual surveys (Map 11). Data was recorded using the iMapInvasives Mobile Advanced (iMMA) application.



**Map 10.** Map of Tug Hill ISPZ HPAs examined by SLELO staff in 2023.

The following **Invasive Species** were found:

Invasive Species	Tier Ranking	HPA's Affected
Common reed grass, phragmites	3	5
Japanese Knotweed, Japanese Bamboo	3	6
Honeysuckle (species unknown)	4	4
Purple Loosestrife	4	3
Spotted Knapweed	4	8
Wild Parsnip	4	8
Black Locust	*	1
Coltsfoot	*	12
Common mullein	*	1
Creeping Jenny, Moneywort	*	1
Eastern Helleborine	*	2
European Lily-of-the-valley	*	1
Garlic Mustard	*	6
Goutweed	*	2
Mugwort	*	8
Policemen's Helmet, Himalayan Balsam	*	2
Reed Canarygrass	*	2
St. Johnswort	*	3

\* *Species is not currently tier ranked*

**NO NEW TIER 1 OR TIER 2 SPECIES WERE DETECTED IN 2023**