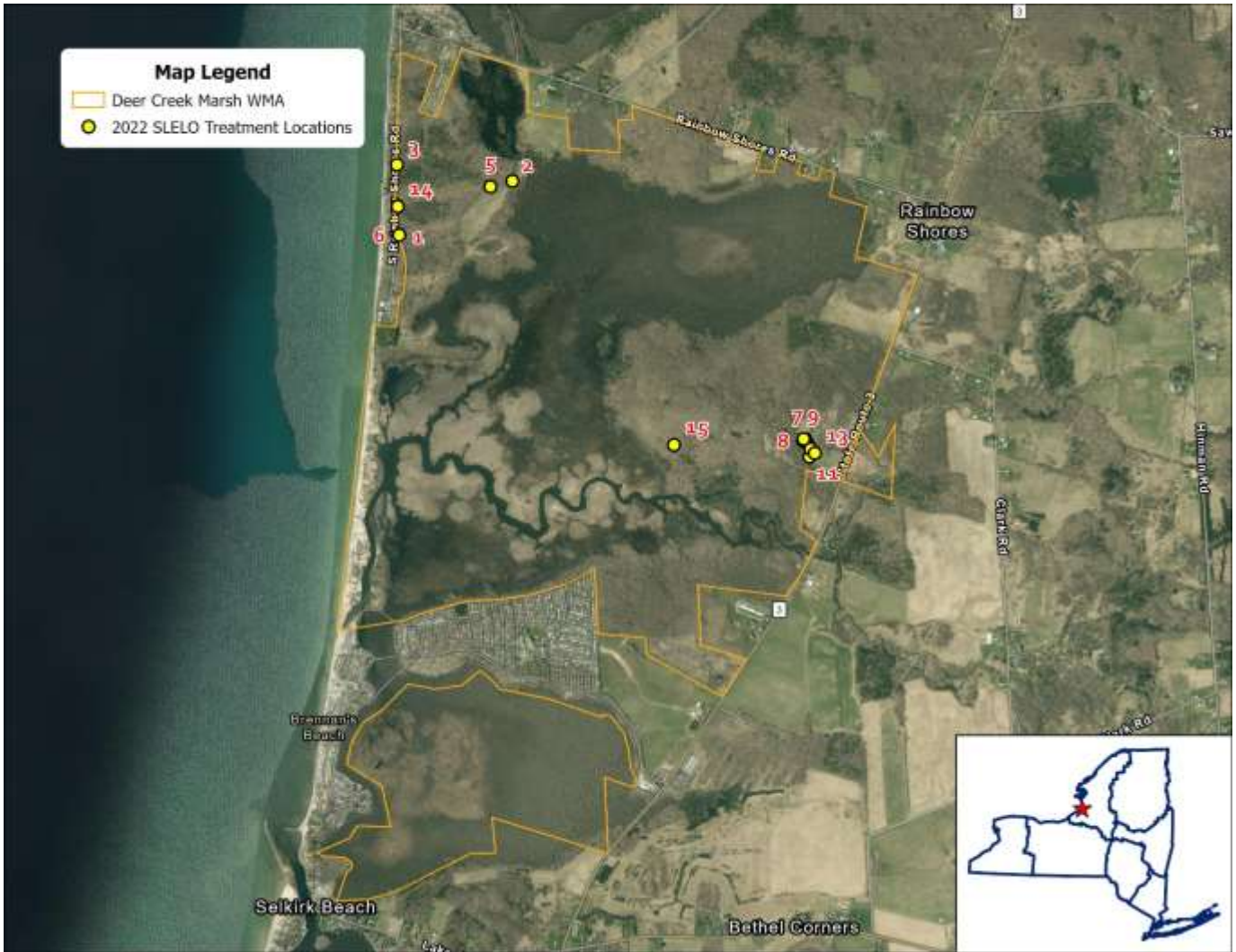


# Deer Creek Marsh WMA



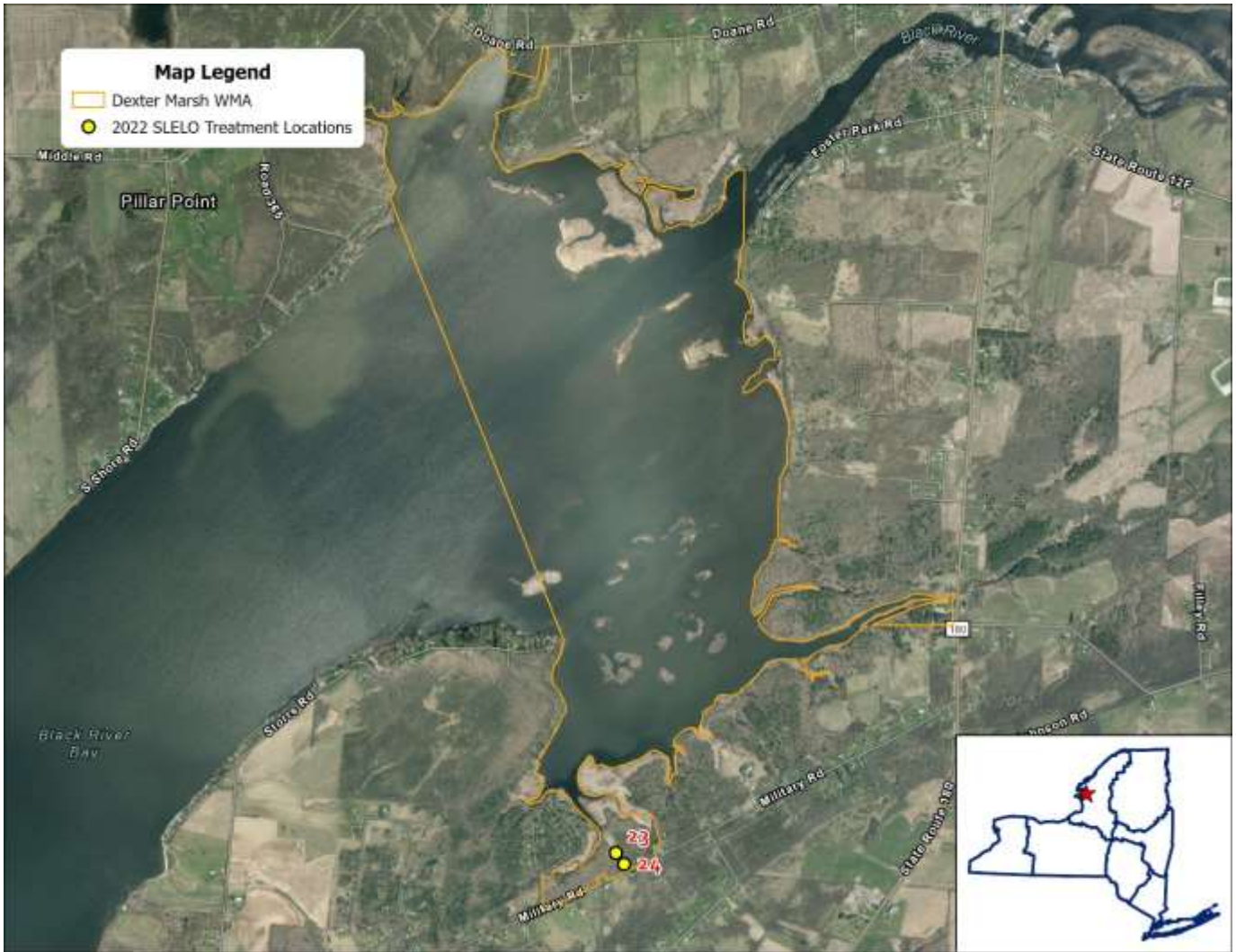
Map Label	Date of Treatment	Species Treated	Treatment Type	Treated Area (SQFT)	Treated Area (Acres)	Latitude	Longitude
1	6/17/2022	Japanese knotweed	Chemical	430.88	0.010	43.604588	-76.197478
2	6/17/2022	Pale swallow-wort	Chemical	32,711.91	0.751	43.607114	-76.190431
3	6/17/2022	Pale swallow-wort	Chemical	183.73	0.004	43.607787	-76.197667
4	7/14/2022	Pale swallow-wort	Chemical	90.49	0.002	43.595324	-76.171645
5	6/17/2022	Pale swallow-wort	Chemical	1,015.23	0.023	43.606847	-76.191785
6	6/29/2022	Garlic mustard	Physical	1,058.89	0.024	43.604588	-76.197466
7	7/5/2022	Pale swallow-wort	Physical	161.44	0.004	43.595549	-76.171921
8	7/5/2022	Pale swallow-wort	Physical	66.07	0.002	43.595476	-76.171971
9	7/5/2022	Pale swallow-wort	Physical	3.93	0.000	43.595554	-76.171831
10	7/5/2022	Pale swallow-wort	Physical	0.07	0.000	43.595554	-76.171935
11	7/8/2022	Pale swallow-wort	Physical	330.04	0.008	43.594745	-76.171543
12	7/8/2022	Pale swallow-wort	Physical	308.87	0.007	43.595106	-76.171479
13	7/8/2022	Pale swallow-wort	Physical	191.04	0.004	43.594931	-76.171211
14	7/13/2022	Pale swallow-wort	Physical	14.20	0.000	43.605877	-76.197588
15	7/14/2022	Pale swallow-wort	Physical	21.83	0.001	43.59521	-76.180045

# El Dorado Preserve - Black Pond WMA



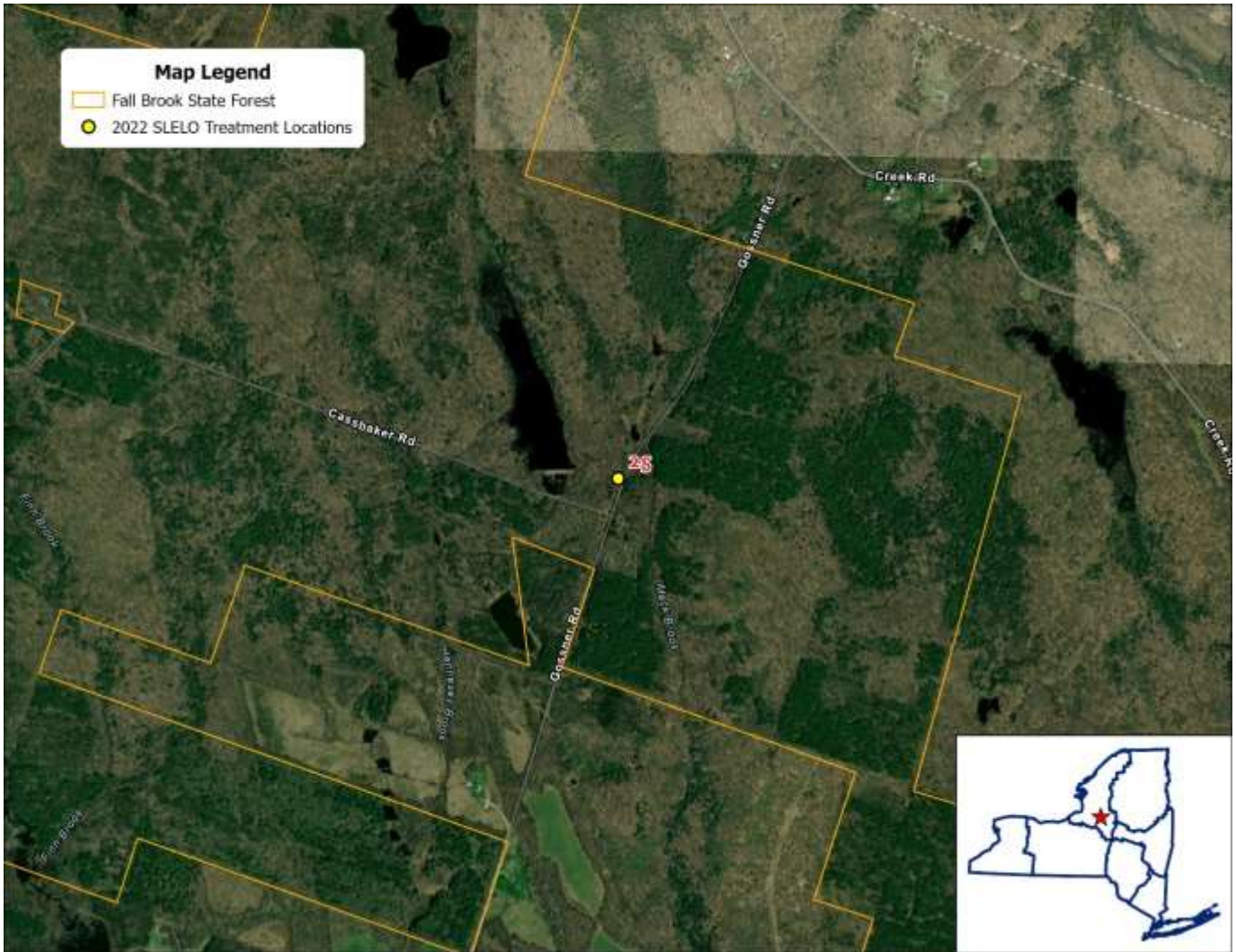
Map Label	Date of Treatment	Species Treated	Treatment Type	Treated Area (SQFT)	Treated Area (Acres)	Latitude	Longitude
16	6/23/2022	Pale swallow-wort	Chemical	12,213.13	0.280	43.80353	-76.2185
17	6/23/2022	Pale swallow-wort	Chemical	1,251.68	0.029	43.80345	-76.2189
18	6/23/2022	Pale swallow-wort	Chemical	49,291.52	1.132	43.80122	-76.2226
19	6/23/2022	Pale swallow-wort	Chemical	2,766.91	0.064	43.80273	-76.2229
20	9/8/2022	Common reed grass	Chemical	4,478.84	0.103	43.80541	-76.2265
21	9/8/2022	Common reed grass	Chemical	2,524.67	0.058	43.8031	-76.2263
22	6/29/2022	Common reed grass	Physical	2,001.85	0.046	43.80516	-76.2265
58	6/22/2022	Pale swallow-wort	Chemical	1,337.52	0.031	43.81128	-76.2348
59	6/22/2022	Pale swallow-wort	Chemical	981.75	0.023	43.80838	-76.2323
60	6/22/2022	Pale swallow-wort	Chemical	32,868.86	0.755	43.81107	-76.2353
61	6/22/2022	Pale swallow-wort	Chemical	51,036.57	1.172	43.80767	-76.232
62	6/22/2022	Pale swallow-wort	Chemical	3,090.05	0.071	43.80734	-76.2318

# Black River Bay Boat Launch



Map Label	Date of Treatment	Species Treated	Treatment Type	Treated Area (SQFT)	Treated Area (Acres)	Latitude	Longitude
23	7/14/2022	Pale swallow-wort	Chemical	27,529.90	0.632	43.96539	-76.0699
24	7/14/2022	Pale swallow-wort	Chemical	572.40	0.013	43.96485	-76.0693

# Fall Brook State Forest



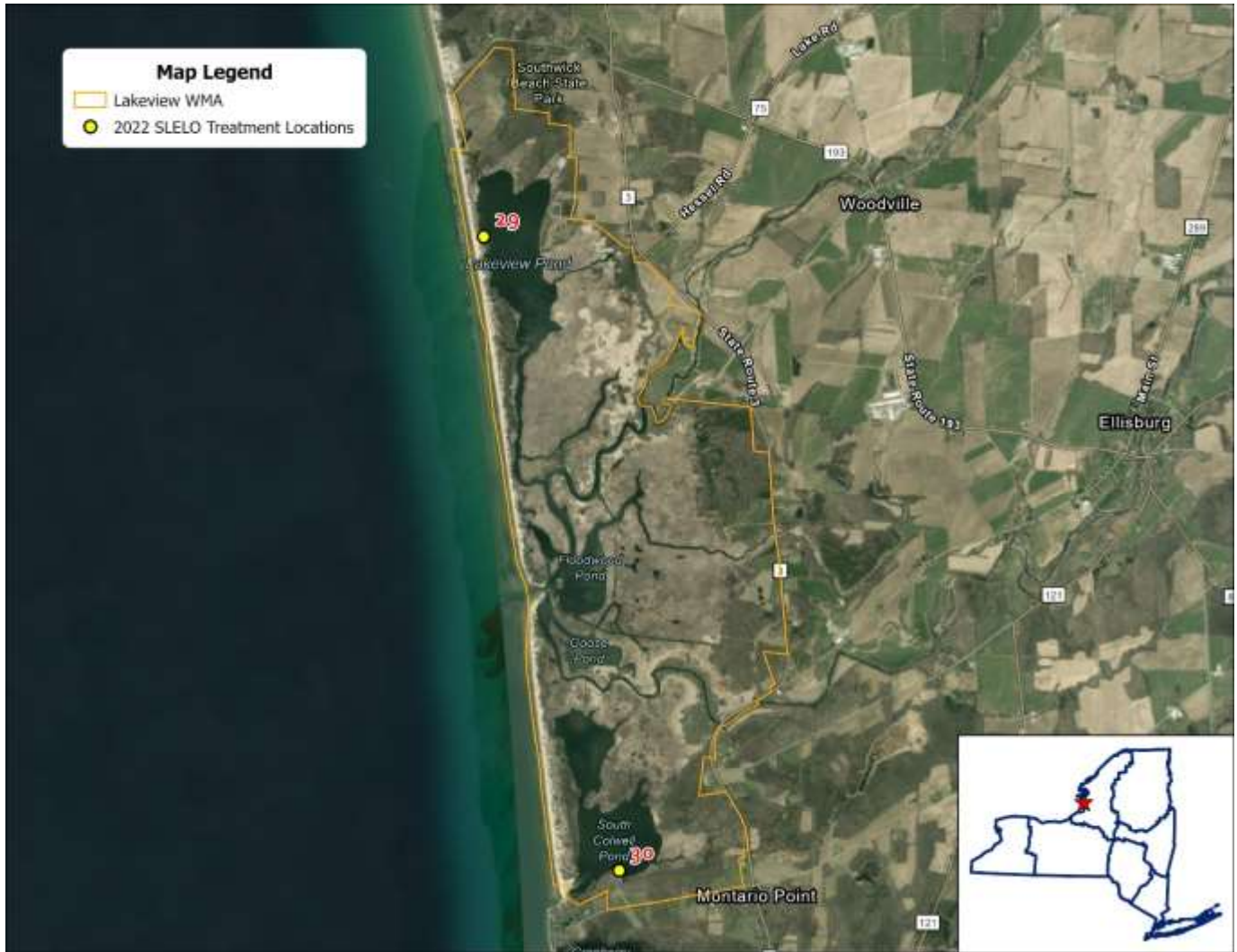
Map Label	Date of Treatment	Species Treated	Treatment Type	Treated Area (SQFT)	Treated Area (Acres)	Latitude	Longitude
25	9/7/2022	Japanese knotweed	Chemical	3,530.34	0.081	43.41732	-75.5886

# Mud Bay Boat Launch



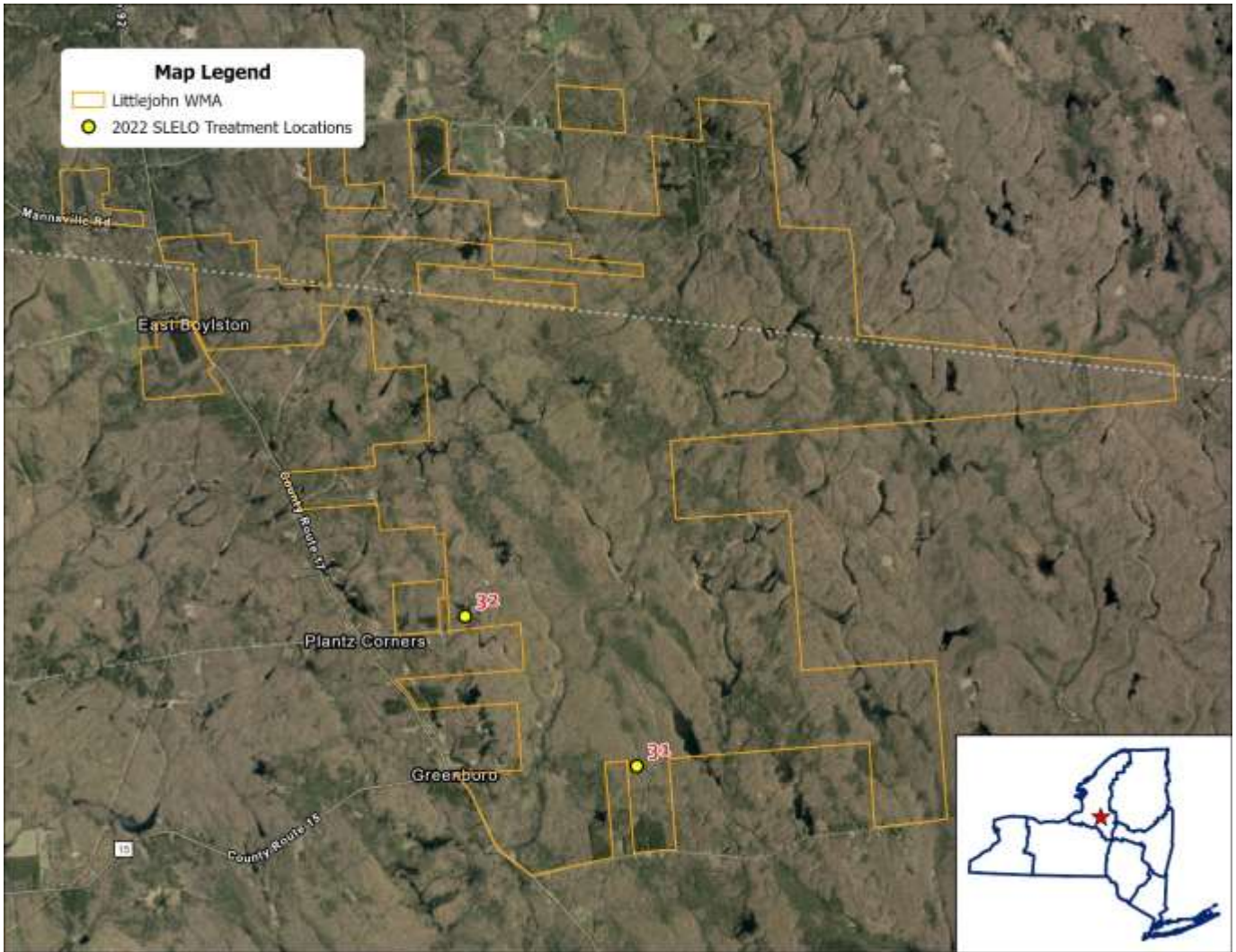
Map Label	Date of Treatment	Species Treated	Treatment Type	Treated Area (SQFT)	Treated Area (Acres)	Latitude	Longitude
26	6/20/2022	Pale swallow-wort	Chemical	3,243.79	0.074	44.07007	-76.3309
27	6/20/2022	Pale swallow-wort	Chemical	2,426.53	0.056	44.06944	-76.3283
28	6/20/2022	Pale swallow-wort	Chemical	1,239.72	0.028	44.06938	-76.3277

# Lakeview WMA



Map Label	Date of Treatment	Species Treated	Treatment Type	Treated Area (SQFT)	Treated Area (Acres)	Latitude	Longitude
29	7/20/2022	Pale swallow-wort	Chemical	812.43	0.019	43.75019	-76.2106
30	7/14/2022	Yellow iris	Physical	13.58	0.000	43.69721	-76.1939

# Littlejohn WMA



Map Label	Date of Treatment	Species Treated	Treatment Type	Treated Area (SQFT)	Treated Area (Acres)	Latitude	Longitude
31	9/8/2022	Common reed grass	Chemical	469.77	0.011	43.65448	-75.8759
32	9/8/2022	Common reed grass	Chemical	442.94	0.010	43.6682	-75.898

# Oneida Fish Hatchery



Map Label	Date of Treatment	Species Treated	Treatment Type	Treated Area (SQFT)	Treated Area (Acres)	Latitude	Longitude
33	7/14/2022	Oriental bittersweet	Chemical	653.90	0.015	43.24915	-75.9988



# Point Peninsula WMA



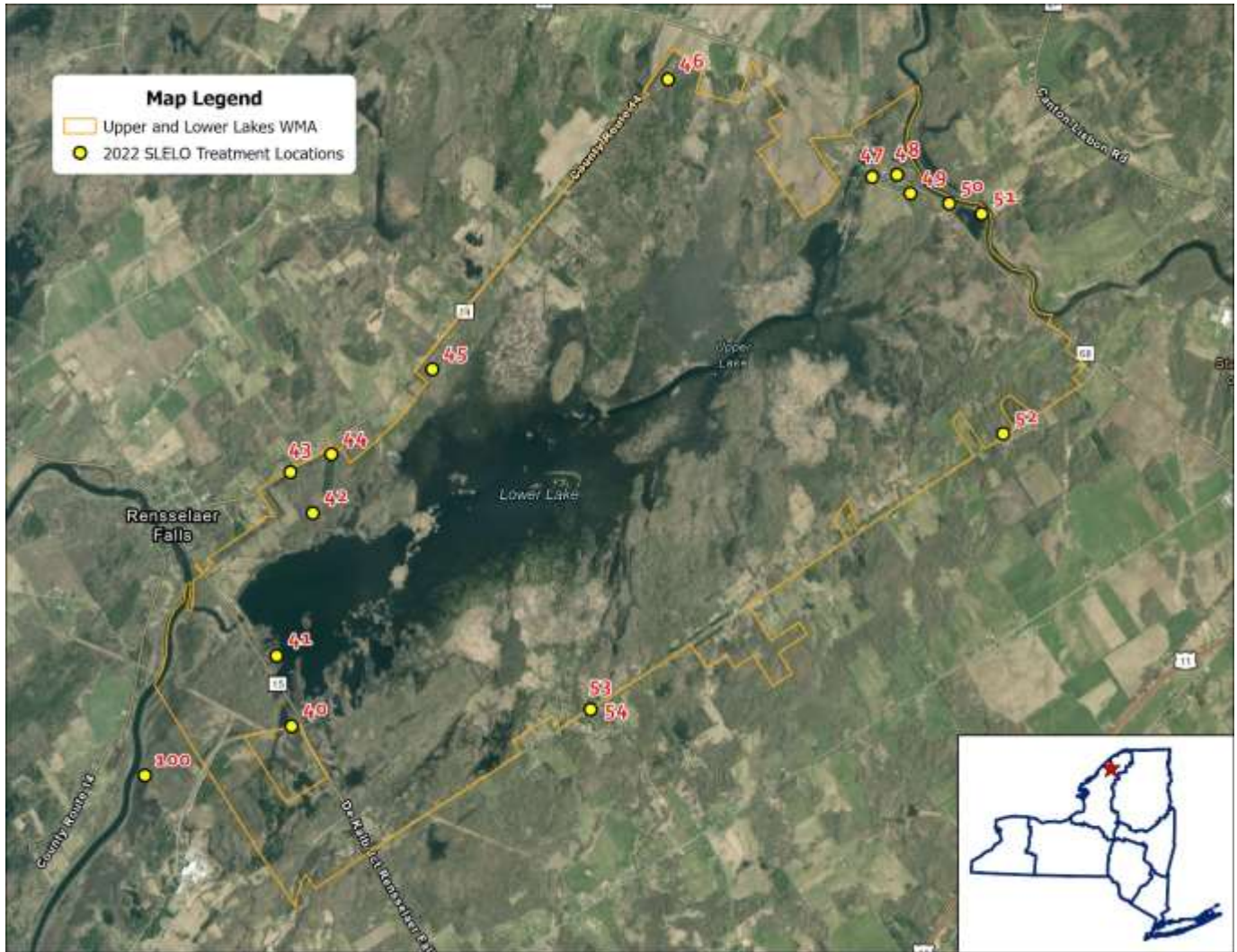
Map Label	Date of Treatment	Species Treated	Treatment Type	Treated Area (SQFT)	Treated Area (Acres)	Latitude	Longitude
34	6/20/2022	Pale swallow-wort	Chemical	14,964.05	0.344	43.99972	-76.2421
35	6/20/2022	Pale swallow-wort	Chemical	48,762.89	1.119	44.00367	-76.239

# Three Mile Bay WMA



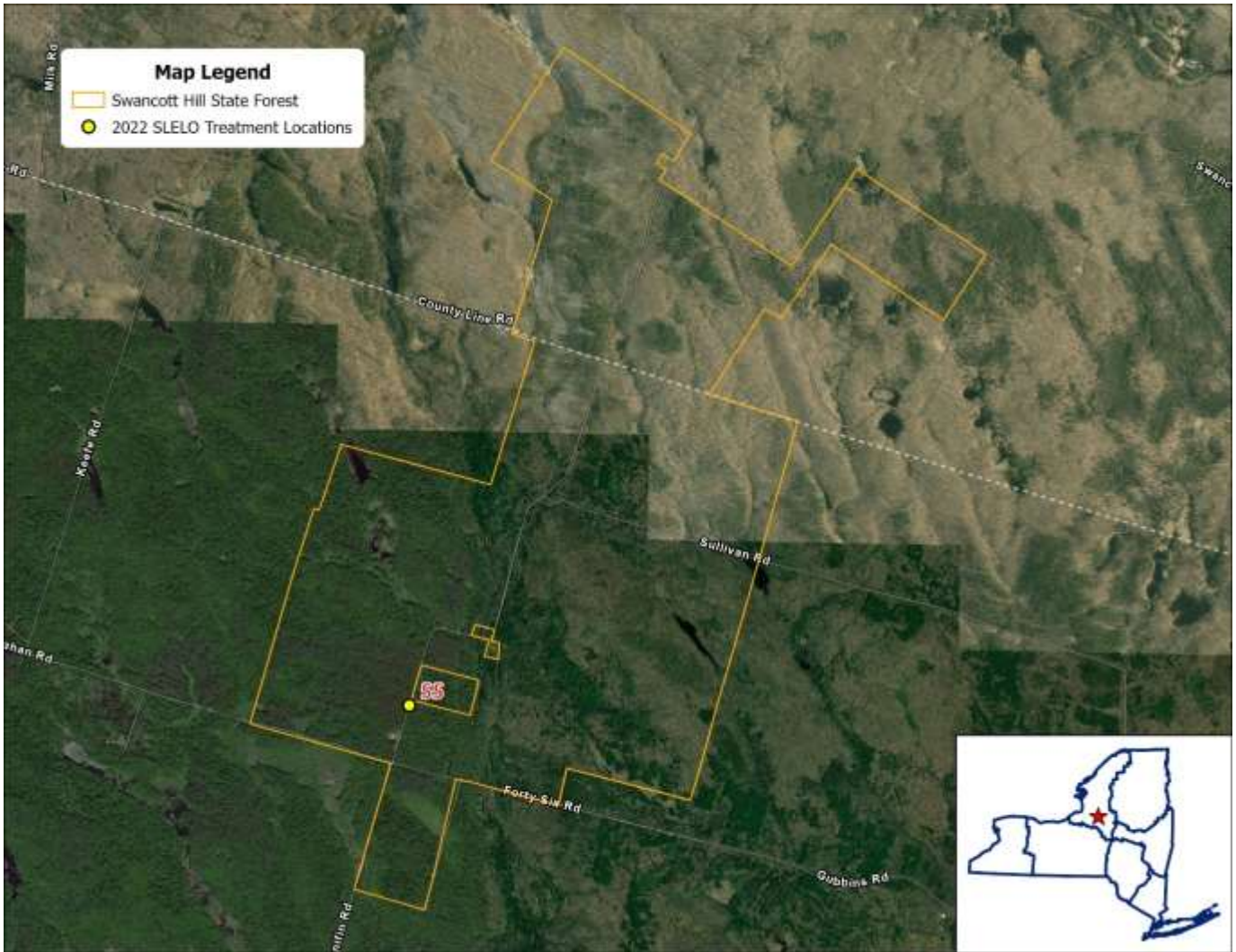
Map Label	Date of Treatment	Species Treated	Treatment Type	Treated Area (SQFT)	Treated Area (Acres)	Latitude	Longitude
36	7/14/2022	Pale swallow-wort	Chemical	128.56	0.003	43.26575	-76.0635
37	7/14/2022	Pale swallow-wort	Chemical	208.37	0.005	43.2698	-76.0655
38	7/26/2022	Pale swallow-wort	Physical	1,335.22	0.031	43.2698	-76.0654
39	7/26/2022	Yellow iris	Physical	50,213.34	1.153	43.2394	-76.0502

# Upper and Lower Lakes WMA



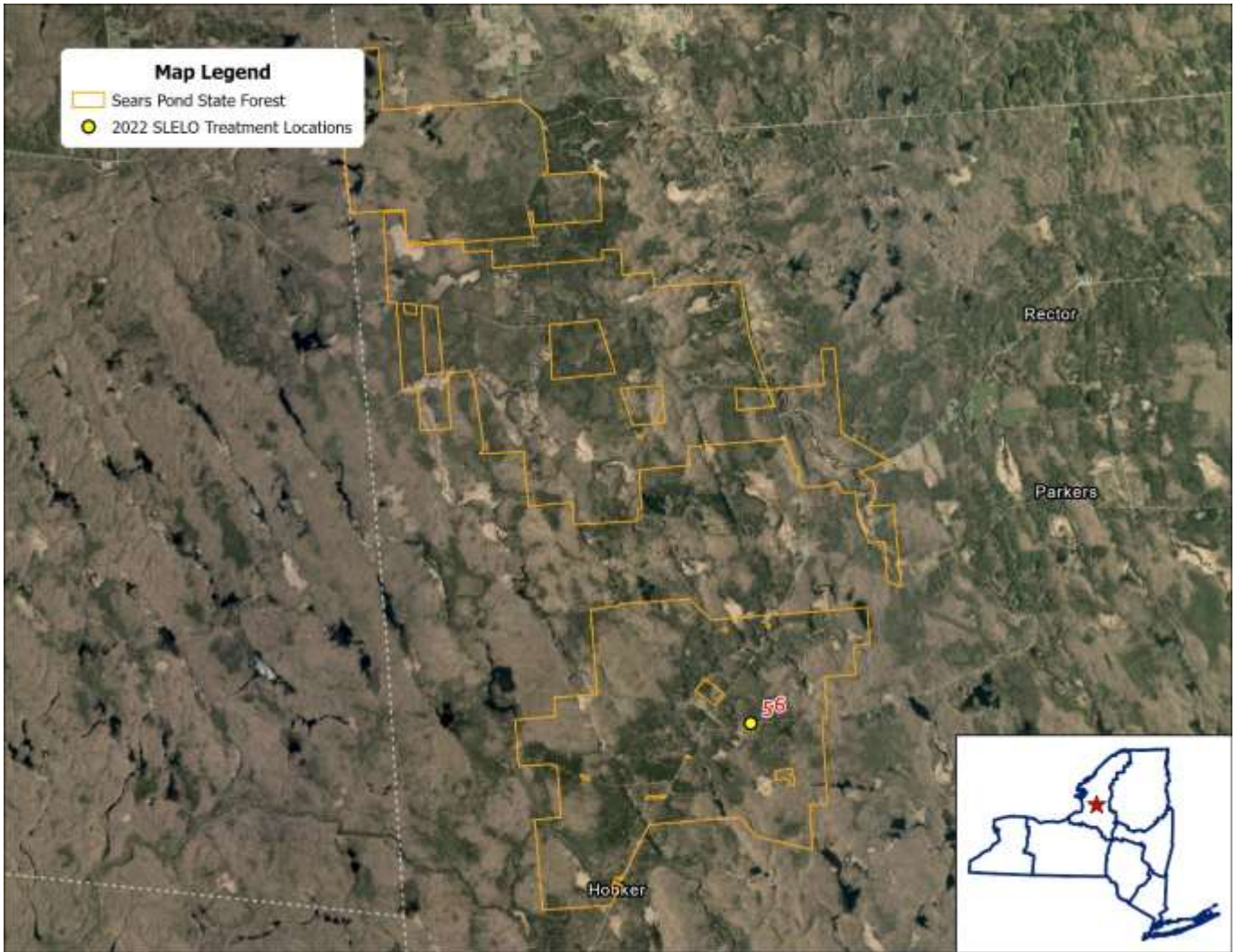
Map Label	Date of Treatment	Species Treated	Treatment Type	Treated Area (SQFT)	Treated Area (Acres)	Latitude	Longitude
40	9/16/2022	Japanese knotweed	Chemical	2,115.65	0.049	44.57136	-75.3044
41	7/19/2022	Oriental bittersweet	Chemical	52.42	0.001	44.57769	-75.3063
42	7/19/2022	Oriental bittersweet	Chemical	26,811.49	0.616	44.59048	-75.3018
43	7/19/2022	Japanese knotweed	Chemical	7,655.19	0.176	44.59415	-75.3046
44	7/19/2022	Oriental bittersweet	Chemical	27,456.21	0.630	44.59577	-75.2995
45	7/19/2022	Oriental bittersweet	Chemical	2,836.47	0.065	44.60342	-75.2869
46	7/19/2022	Pale swallow-wort	Chemical	611.73	0.014	44.62947	-75.2574
47	7/19/2022	Oriental bittersweet	Chemical	4,582.43	0.105	44.62079	-75.2317
48	9/16/2022	Common reed grass	Chemical	3,016.80	0.069	44.62098	-75.2286
49	7/19/2022	Oriental bittersweet	Chemical	214.25	0.005	44.61932	-75.2269
50	9/16/2022	Japanese knotweed	Chemical	3,777.80	0.087	44.61843	-75.222
51	9/16/2022	Japanese knotweed	Chemical	5,186.97	0.119	44.61751	-75.218
52	9/16/2022	Common reed grass	Chemical	10,235.74	0.235	44.59778	-75.2152
53	9/16/2022	Japanese knotweed	Chemical	38.84	0.001	44.57298	-75.2669
54	9/16/2022	Oriental bittersweet	Chemical	20.82	0.000	44.57298	-75.2669
100	9/16/2022	Japanese knotweed	Chemical	625.27	0.01	44.5669	-75.3228

# Swancott Hill State Forest



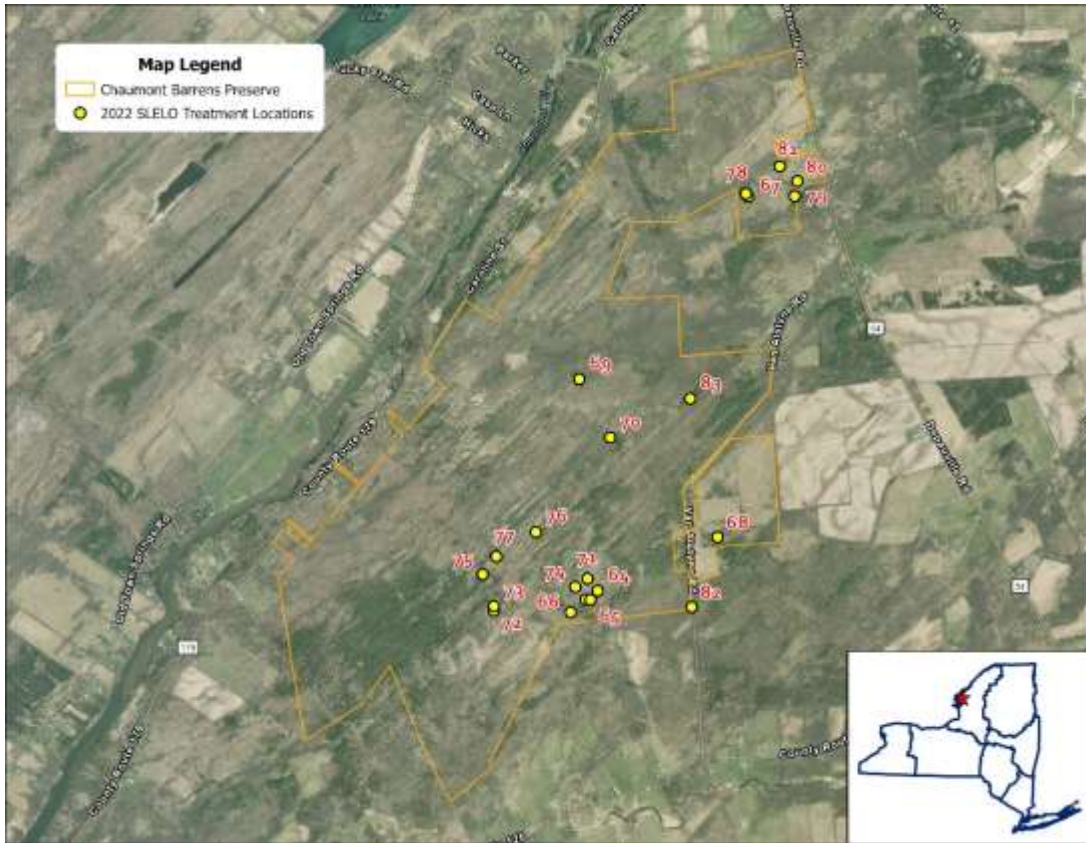
Map Label	Date of Treatment	Species Treated	Treatment Type	Treated Area (SQFT)	Treated Area (Acres)	Latitude	Longitude
55	9/7/2022	Japanese knotweed	Chemical	4,555.78	0.105	43.42893	-75.6674

# Sears Pond State Forest



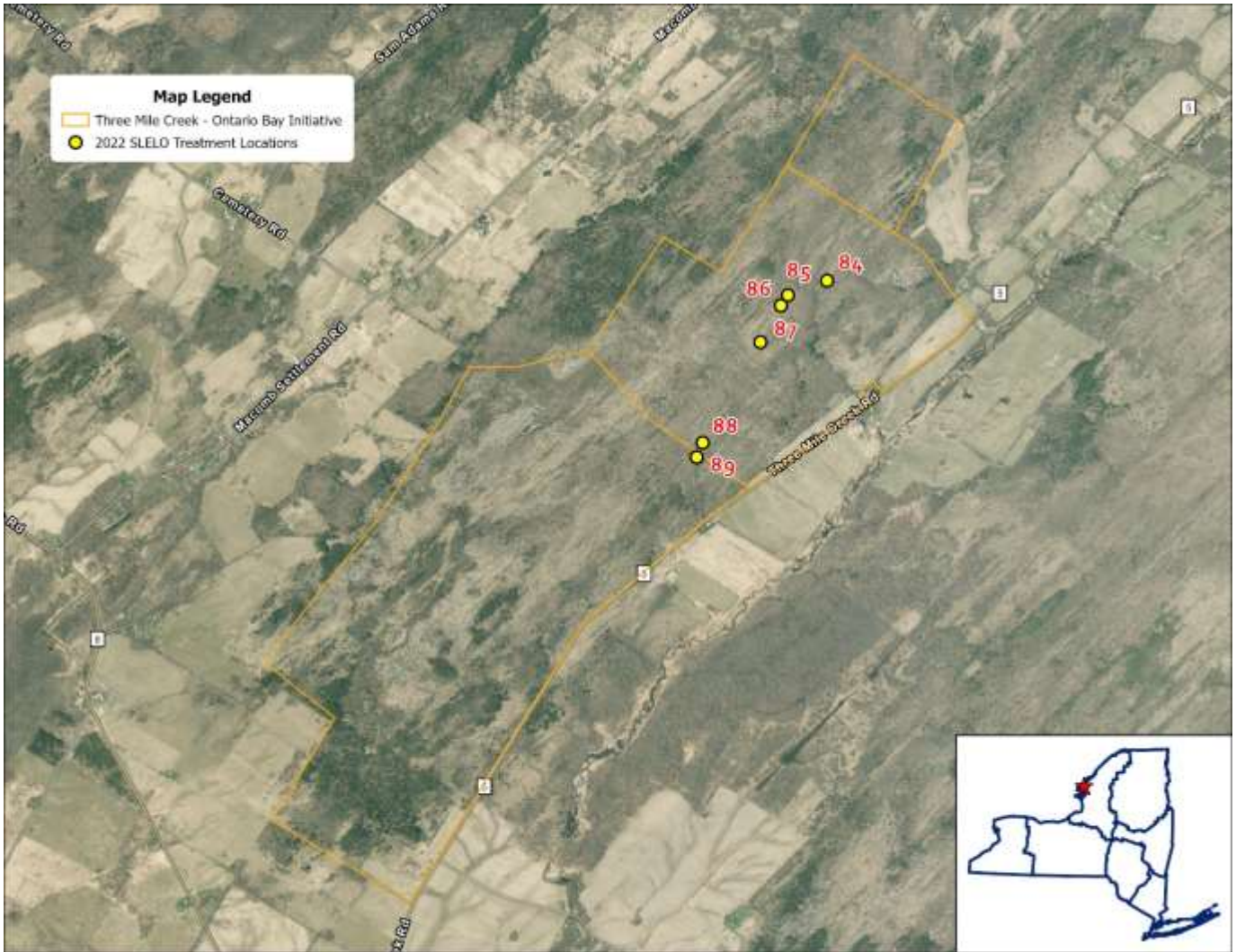
Map Label	Date of Treatment	Species Treated	Treatment Type	Treated Area (SQFT)	Treated Area (Acres)	Latitude	Longitude
56	9/15/2022	Common reed grass	Chemical	103.57	0.002	43.70948	-75.725

# Chaumont Barrens Preserve



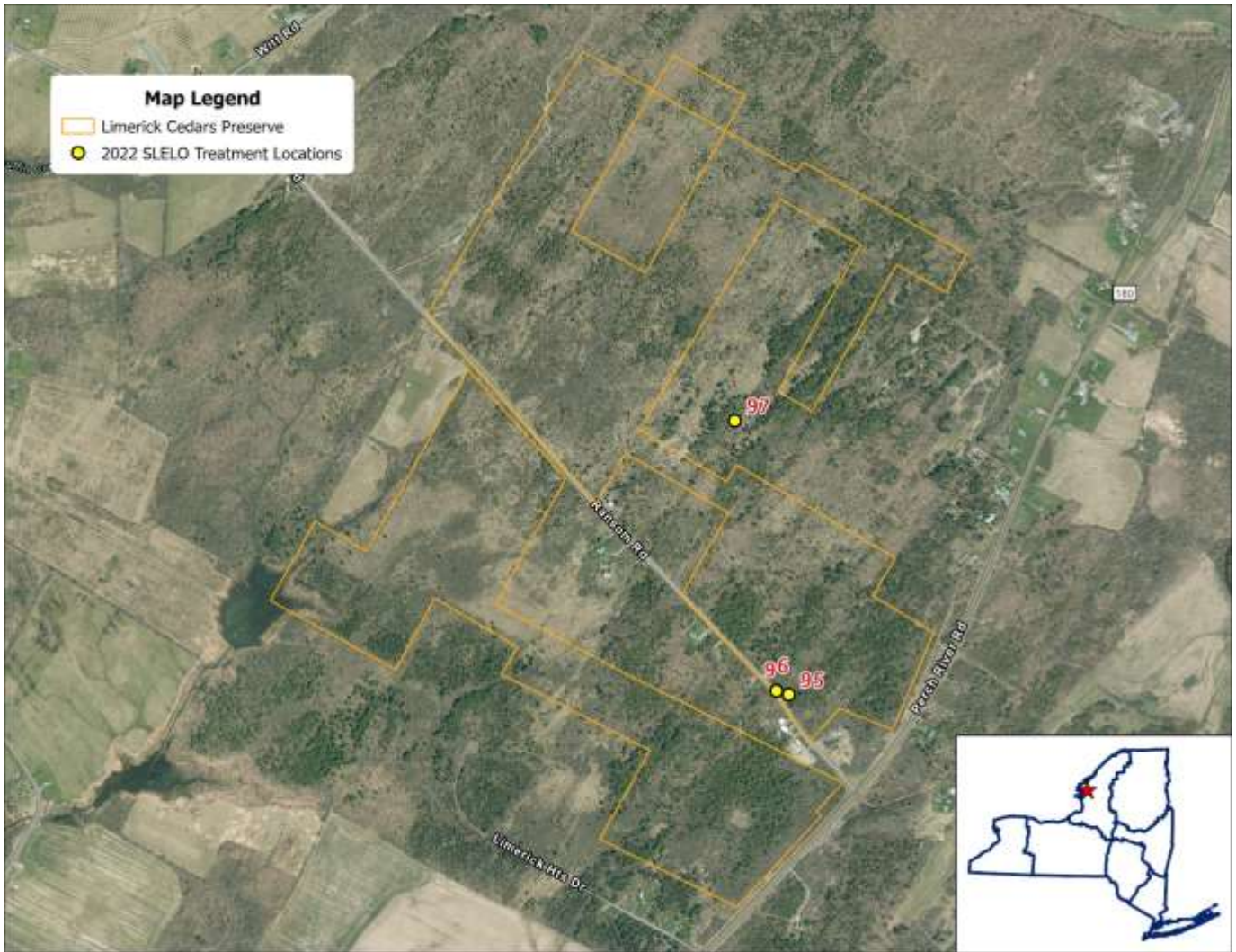
Map Label	Date of Treatment	Species Treated	Treatment Type	Treated Area (SQFT)	Treated Area (Acres)	Latitude	Longitude
63	6/28/2022	Pale swallow-wort	Chemical	770.89	0.018	44.09395	-76.0829
64	6/28/2022	Pale swallow-wort	Chemical	260.65	0.006	44.09447	-76.0819
65	6/28/2022	Pale swallow-wort	Chemical	315.52	0.007	44.09393	-76.0825
66	6/28/2022	Pale swallow-wort	Chemical	170.65	0.004	44.09316	-76.0841
67	7/13/2022	Pale swallow-wort	Chemical	255.63	0.006	44.11855	-76.0696
68	7/13/2022	Pale swallow-wort	Chemical	4,546.35	0.104	44.09784	-76.0718
69	6/23/2022	Pale swallow-wort	Chemical	80,855.29	1.856	44.10734	-76.0837
70	6/28/2022	Pale swallow-wort	Chemical	1,673.90	0.038	44.1038	-76.081
71	6/28/2022	Pale swallow-wort	Chemical	114.06	0.003	44.09521	-76.0828
72	6/28/2022	Pale swallow-wort	Chemical	348.47	0.008	44.0932	-76.0906
73	6/28/2022	Pale swallow-wort	Chemical	293.00	0.007	44.09347	-76.0906
74	6/28/2022	Pale swallow-wort	Chemical	56.30	0.001	44.0947	-76.0838
75	6/28/2022	Pale swallow-wort	Chemical	50.67	0.001	44.09539	-76.0916
76	6/28/2022	Pale swallow-wort	Chemical	698.86	0.016	44.098	-76.0872
77	6/28/2022	Pale swallow-wort	Chemical	612.81	0.014	44.09648	-76.0905
78	7/13/2022	Pale swallow-wort	Chemical	163.15	0.004	44.11872	-76.0698
79	7/13/2022	Pale swallow-wort	Chemical	1,482.32	0.034	44.11862	-76.0657
80	7/13/2022	Pale swallow-wort	Chemical	1,194.28	0.027	44.11953	-76.0655
81	7/13/2022	Pale swallow-wort	Chemical	853.39	0.020	44.12041	-76.0669
82	7/13/2022	Pale swallow-wort	Chemical	869.59	0.020	44.09358	-76.0739
83	6/28/2022	Pale swallow-wort	Chemical	607.54	0.014	44.10623	-76.0743

# Three Mile Creek – Ontario Bay Initiative



Map Label	Date of Treatment	Species Treated	Treatment Type	Treated Area (SQFT)	Treated Area (Acres)	Latitude	Longitude
89	7/27/2022	Pale swallow-wort	Chemical	108.97	0.003	44.14381	-76.1375
90	7/27/2022	Pale swallow-wort	Chemical	2,759.46	0.06	44.14313	-76.1399
91	7/27/2022	Pale swallow-wort	Chemical	34.10	0.0008	44.14265	-76.1404
92	7/27/2022	Pale swallow-wort	Chemical	1,848.93	0.04	44.14099	-76.1416
93	7/27/2022	Pale swallow-wort	Chemical	27,225.91	0.63	44.13642	-76.1451
94	7/27/2022	Pale swallow-wort	Chemical	3,386.41	0.08	44.13575	-76.1455

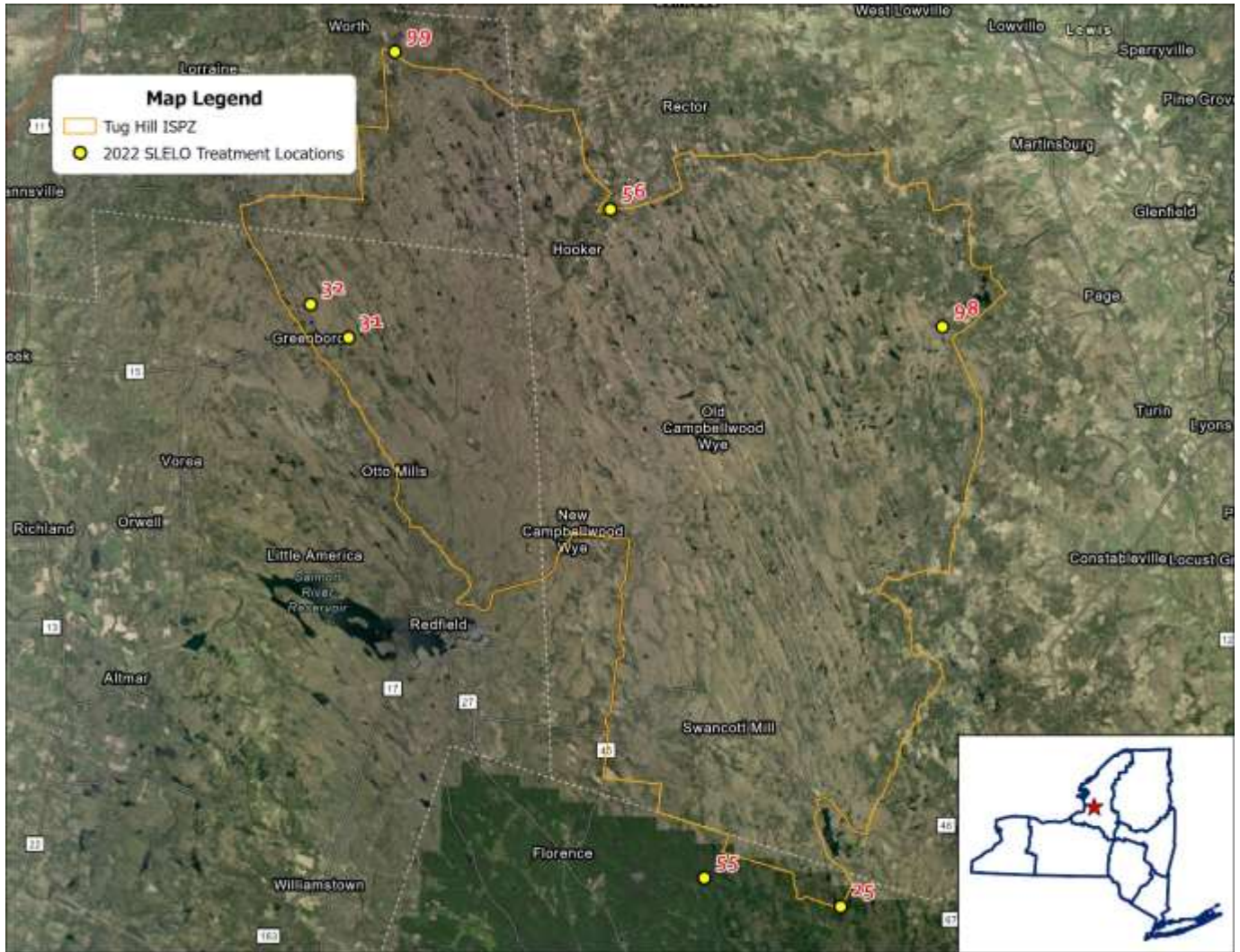
# Limerick Cedars Preserve



Map Label	Date of Treatment	Species Treated	Treatment Type	Treated Area (SQFT)	Treated Area (Acres)	Latitude	Longitude
95	7/27/2022	Pale swallow-wort	Chemical	116.34	0.003	44.04576	-76.0346
96	7/27/2022	Pale swallow-wort	Chemical	4,873.81	0.11	44.04584	-76.0349
97	7/27/2022	Pale swallow-wort	Chemical	1,082.26	0.02	44.05186	-76.0363

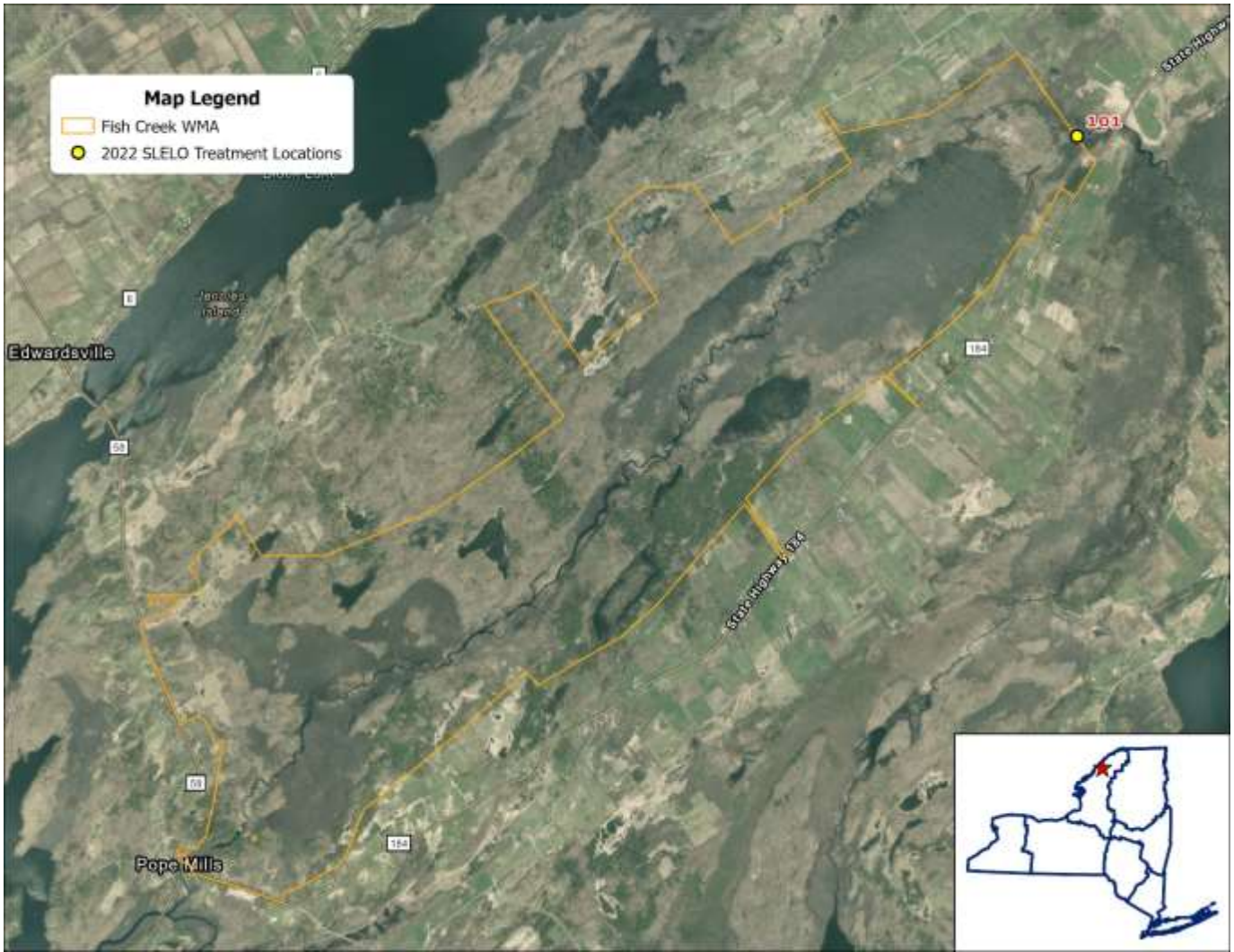


# Invasive Species Prevention Zone



Map Label	Date of Treatment	Species Treated	Treatment Type	Treated Area (SQFT)	Treated Area (Acres)	Latitude	Longitude
25	9/7/2022	Japanese knotweed	Chemical	3,530.34	0.08	43.41732	-75.5886
31	9/8/2022	Common reed grass	Chemical	469.77	0.01	43.65448	-75.8759
32	9/8/2022	Common reed grass	Chemical	442.94	0.01	43.6682	-75.898
55	9/7/2022	Japanese knotweed	Chemical	4,555.78	0.10	43.42893	-75.6674
56	9/15/2022	Common reed grass	Chemical	103.57	0.002	43.70948	-75.725
98	9/7/2022	Common reed grass	Chemical	2,238.35	0.05	43.66117	-75.5323
99	9/8/2022	Japanese knotweed	Chemical	941.36	0.02	43.77472	-75.8509

# Fish Creek WMA



Map Label	Date of Treatment	Species Treated	Treatment Type	Treated Area (SQFT)	Treated Area (Acres)	Latitude	Longitude
101	9/16/2022	Common reed grass	Chemical	227.53	0.01	44.541782	-75.484078

