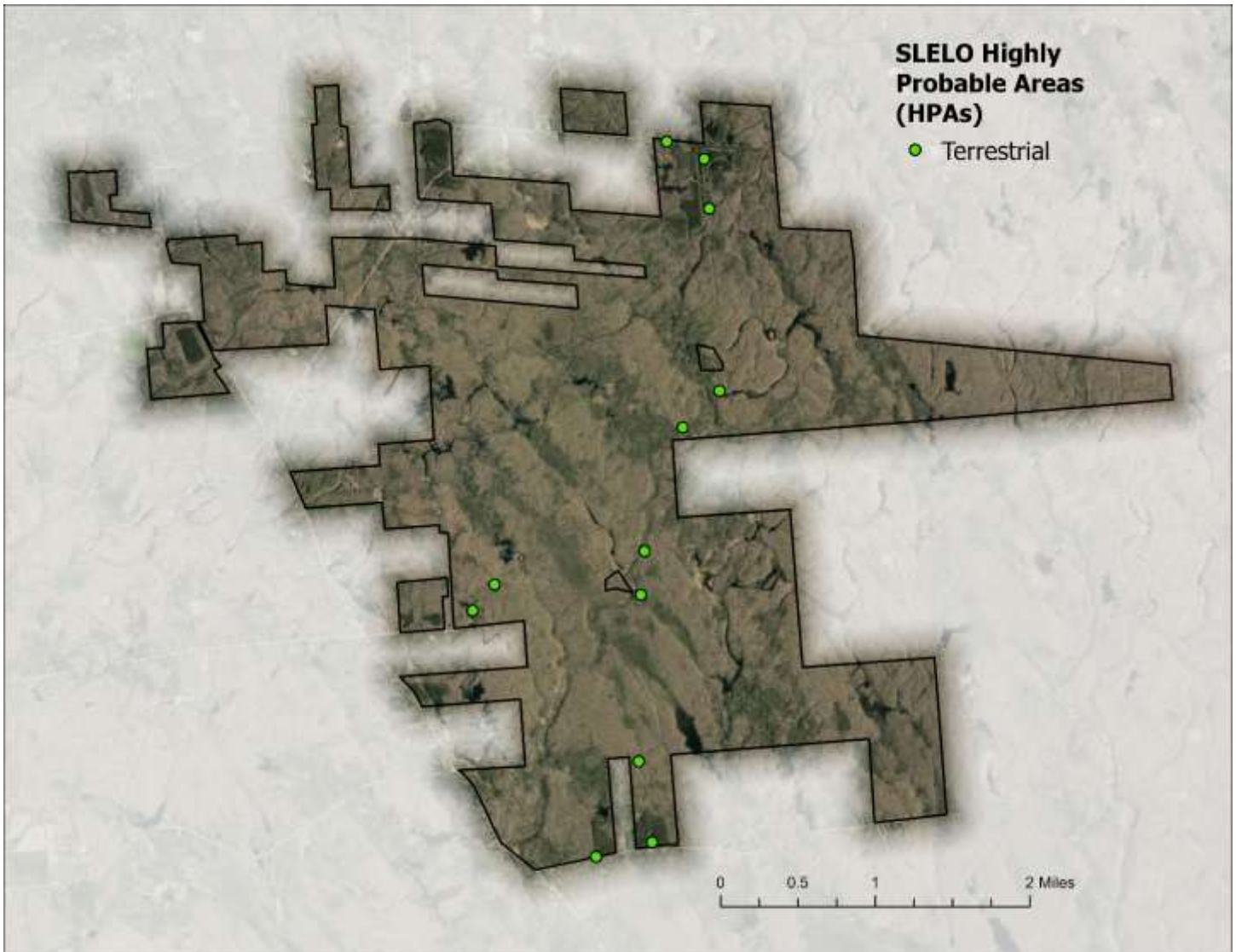


Little John WMA

Little John WMA PCA was surveyed for terrestrial invasive species in July by Brittney Rogers and Robert Smith. SLELO staff surveyed 12.10 acres of 12 HPA's for terrestrial invasive species using visual surveys (Map 6). Data was recorded using the iMapInvasives Mobile Advanced (iMMA) application.



Map 6. Map of Little John WMA HPAs examined by SLELO staff in 2023.

The following **Invasive Species** were found:

Invasive Species	Tier Ranking	HPA's Affected
Common reed grass, phragmites	3	2
Common Buckthorn	4	2
Glossy Buckthorn	4	2
Spotted Knapweed	4	5
Wild Parsnip	4	8
Coltsfoot	*	2
Common mullein	*	1
Crabapple (species unknown)	*	1
Creeping Jenny, Moneywort	*	1
Eastern Helleborine	*	4
Garlic Mustard	*	3
Goutweed	*	1
Mugwort	*	6
Orange Daylily	*	1

NO NEW TIER 1 OR TIER 2 SPECIES WERE DETECTED IN 2023