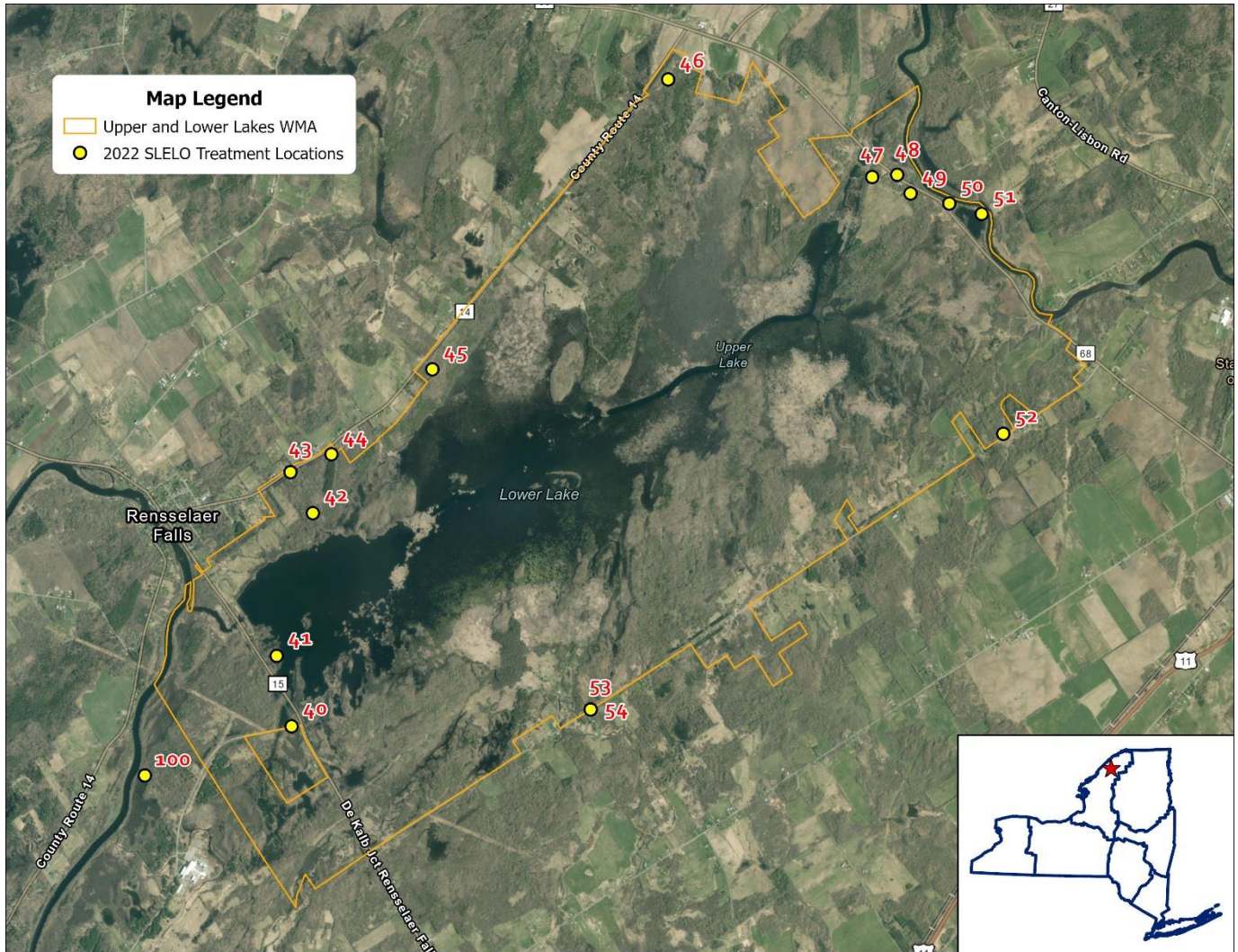


# Upper and Lower Lakes WMA



| Map Label | Date of Treatment | Species Treated      | Treatment Type | Treated Area (SQFT) | Treated Area (Acres) | Latitude | Longitude |
|-----------|-------------------|----------------------|----------------|---------------------|----------------------|----------|-----------|
| 40        | 9/16/2022         | Japanese knotweed    | Chemical       | 2,115.65            | 0.049                | 44.57136 | -75.3044  |
| 41        | 7/19/2022         | Oriental bittersweet | Chemical       | 52.42               | 0.001                | 44.57769 | -75.3063  |
| 42        | 7/19/2022         | Oriental bittersweet | Chemical       | 26,811.49           | 0.616                | 44.59048 | -75.3018  |
| 43        | 7/19/2022         | Japanese knotweed    | Chemical       | 7,655.19            | 0.176                | 44.59415 | -75.3046  |
| 44        | 7/19/2022         | Oriental bittersweet | Chemical       | 27,456.21           | 0.630                | 44.59577 | -75.2995  |
| 45        | 7/19/2022         | Oriental bittersweet | Chemical       | 2,836.47            | 0.065                | 44.60342 | -75.2869  |
| 46        | 7/19/2022         | Pale swallow-wort    | Chemical       | 611.73              | 0.014                | 44.62947 | -75.2574  |
| 47        | 7/19/2022         | Oriental bittersweet | Chemical       | 4,582.43            | 0.105                | 44.62079 | -75.2317  |
| 48        | 9/16/2022         | Common reed grass    | Chemical       | 3,016.80            | 0.069                | 44.62098 | -75.2286  |
| 49        | 7/19/2022         | Oriental bittersweet | Chemical       | 214.25              | 0.005                | 44.61932 | -75.2269  |
| 50        | 9/16/2022         | Japanese knotweed    | Chemical       | 3,777.80            | 0.087                | 44.61843 | -75.222   |
| 51        | 9/16/2022         | Japanese knotweed    | Chemical       | 5,186.97            | 0.119                | 44.61751 | -75.218   |
| 52        | 9/16/2022         | Common reed grass    | Chemical       | 10,235.74           | 0.235                | 44.59778 | -75.2152  |
| 53        | 9/16/2022         | Japanese knotweed    | Chemical       | 38.84               | 0.001                | 44.57298 | -75.2669  |
| 54        | 9/16/2022         | Oriental bittersweet | Chemical       | 20.82               | 0.000                | 44.57298 | -75.2669  |
| 100       | 9/16/2022         | Japanese knotweed    | Chemical       | 625.27              | 0.01                 | 44.5669  | -75.3228  |