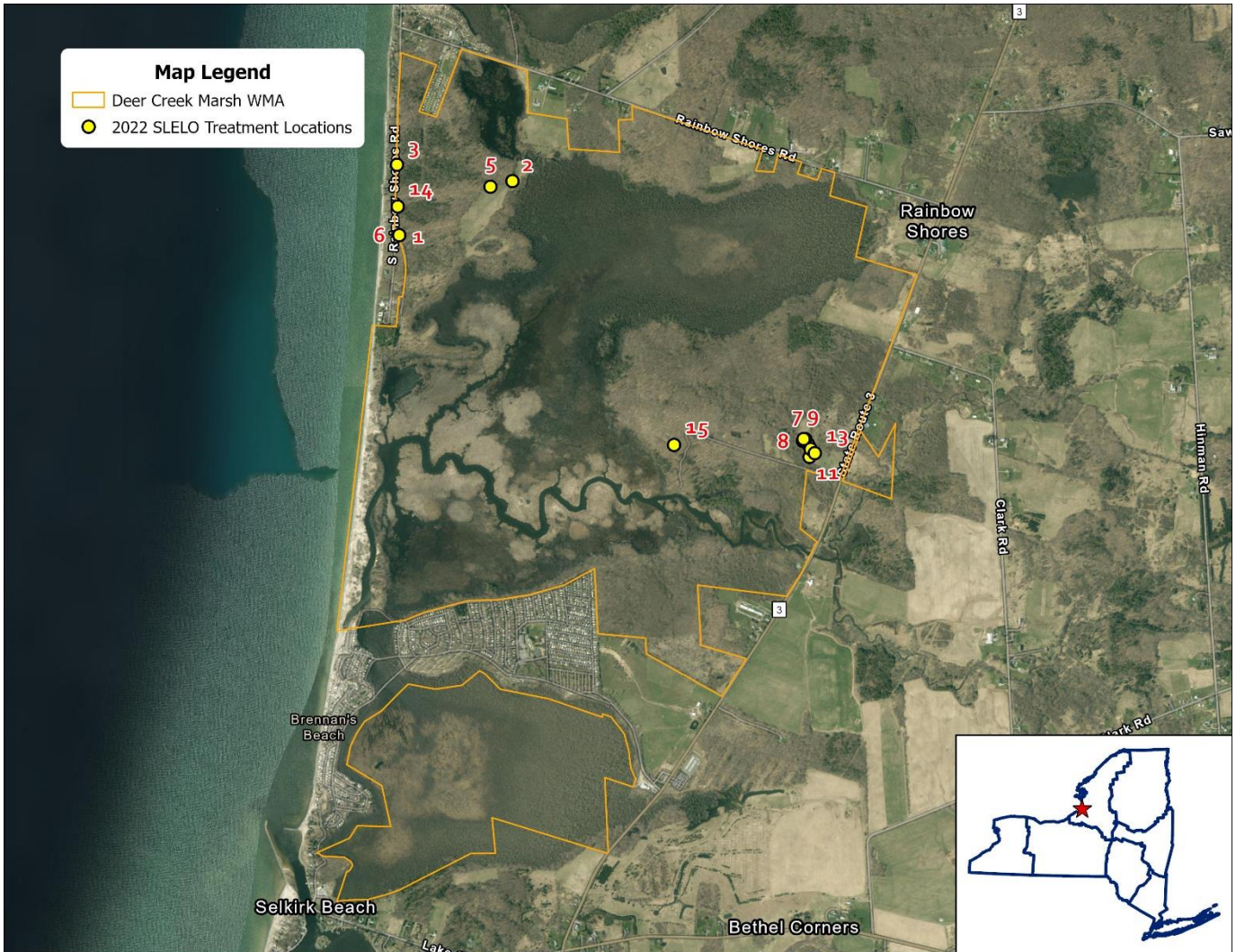


Deer Creek Marsh WMA



Map Label	Date of Treatment	Species Treated	Treatment Type	Treated Area (SQFT)	Treated Area (Acres)	Latitude	Longitude
1	6/17/2022	Japanese knotweed	Chemical	430.88	0.010	43.604588	-76.197478
2	6/17/2022	Pale swallow-wort	Chemical	32,711.91	0.751	43.607114	-76.190431
3	6/17/2022	Pale swallow-wort	Chemical	183.73	0.004	43.607787	-76.197667
4	7/14/2022	Pale swallow-wort	Chemical	90.49	0.002	43.595324	-76.171645
5	6/17/2022	Pale swallow-wort	Chemical	1,015.23	0.023	43.606847	-76.191785
6	6/29/2022	Garlic mustard	Physical	1,058.89	0.024	43.604588	-76.197466
7	7/5/2022	Pale swallow-wort	Physical	161.44	0.004	43.595549	-76.171921
8	7/5/2022	Pale swallow-wort	Physical	66.07	0.002	43.595476	-76.171971
9	7/5/2022	Pale swallow-wort	Physical	3.93	0.000	43.595554	-76.171831
10	7/5/2022	Pale swallow-wort	Physical	0.07	0.000	43.595554	-76.171935
11	7/8/2022	Pale swallow-wort	Physical	330.04	0.008	43.594745	-76.171543
12	7/8/2022	Pale swallow-wort	Physical	308.87	0.007	43.595106	-76.171479
13	7/8/2022	Pale swallow-wort	Physical	191.04	0.004	43.594931	-76.171211
14	7/13/2022	Pale swallow-wort	Physical	14.20	0.000	43.605877	-76.197588
15	7/14/2022	Pale swallow-wort	Physical	21.83	0.001	43.59521	-76.180045