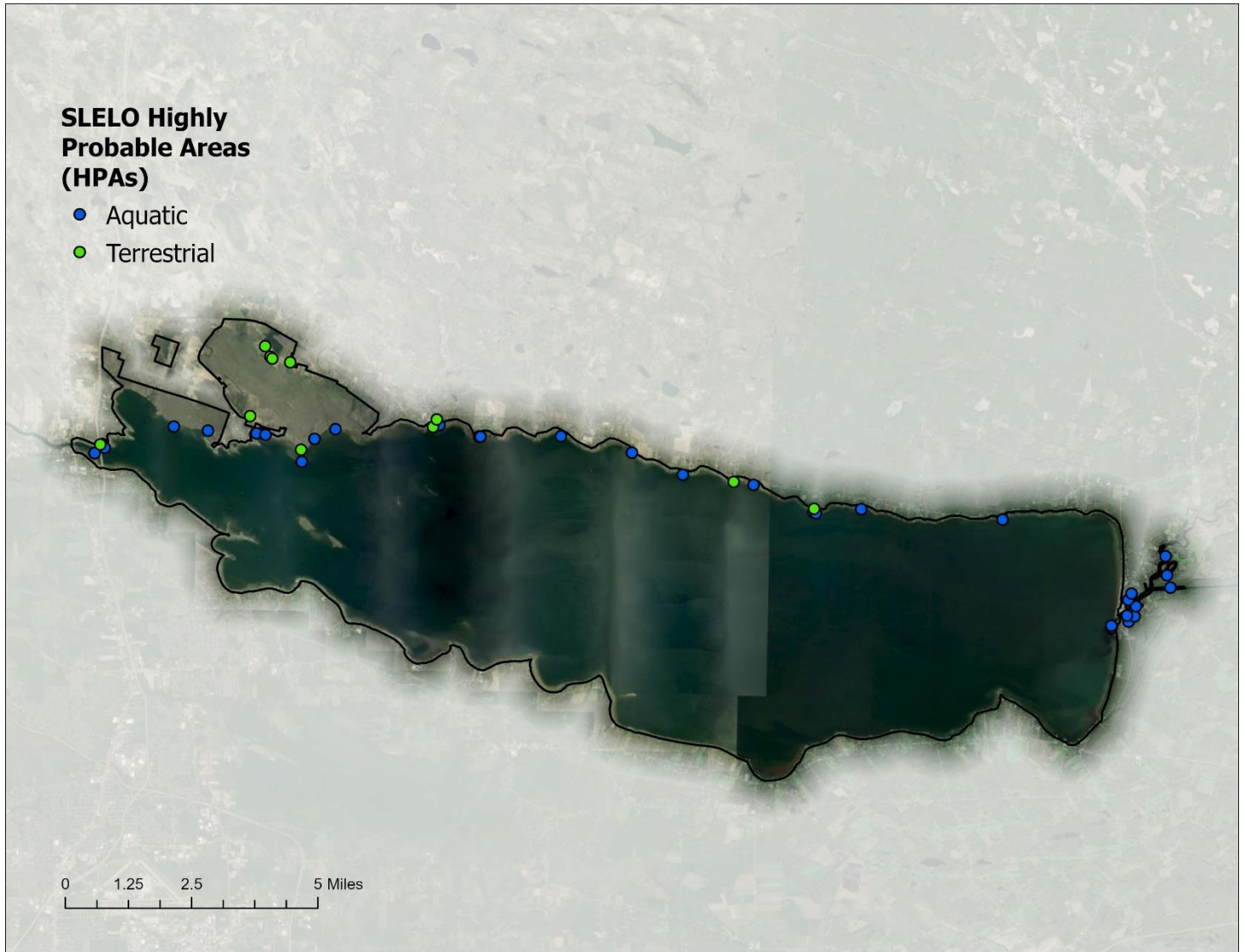


# Oneida Lake and Three Mile Bay WMA

Three Mile Bay WMA – Oneida Lake PCA was surveyed for terrestrial invasive species in June, July, and August and for aquatic invasive species in September and October by Brittney Rogers and Robert Smith with assistance from Watercraft Inspection Stewards Kiernan LaFaver, Amanda Cooper, and Alisa Trudell. SLELO staff surveyed 87.94 acres of 11 HPA's for terrestrial invasive species (Map 7) using visual surveys. An additional 31 aquatic HPAs using visual surveys and rake tosses. Data was recorded using the iMapInvasives Mobile Advanced (iMMA) and Simple Aquatic Survey (SAS) applications.



**Map 7.** Map of Oneida Lake – Three Mile Bay WMA HPAs examined by SLELO staff in 2022.

The following **Invasive Species** were found:

Invasive Species	Tier Ranking	HPA's Affected
Common reed grass	3	5
Japanese knotweed	3	1
Multiflora rose	3	1
Oriental bittersweet	3	1
Pale swallow-wort	3	2
Starry stonewort	3	3
Bush honeysuckle	4	4
Common buckthorn	4	1
Eurasian watermilfoil	4	14
Purple loosestrife	4	4
Yellow iris	4	3
Zebra mussel	4	16
Brittle naiad	*	4
Autumn olive	*	1
Elecampane	*	1
Garden stonecrop	*	1
Lesser periwinkle	*	1
Orange daylily	*	1
Tree-of-heaven	*	1

\* Species is not currently tier ranked

**NO NEW TIER 1 OR TIER 2 SPECIES WERE DETECTED IN 2022**