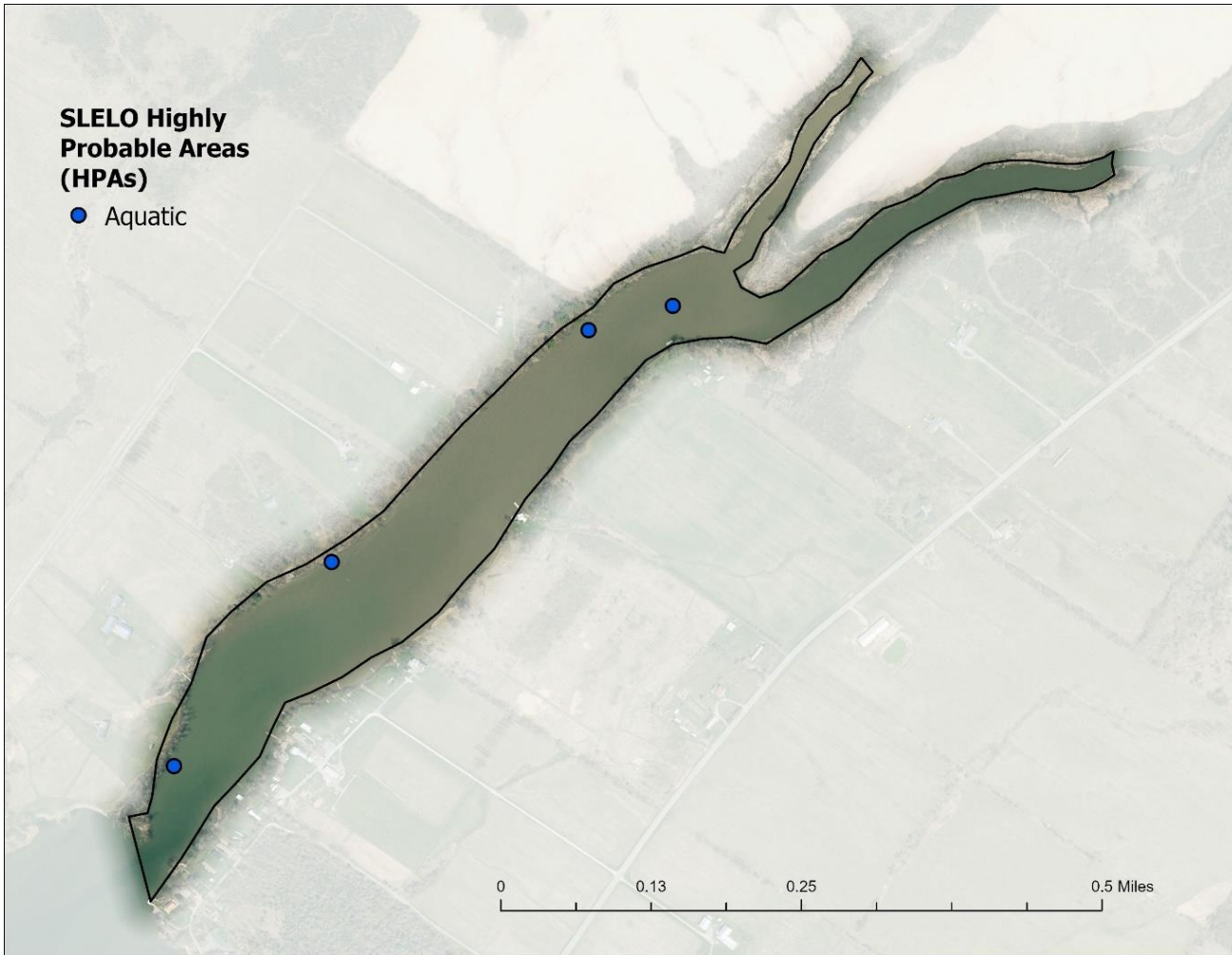


Guffin Bay

The Guffin Bay PCA was surveyed in August 2022 by Brittney Rogers and Megan Pistolesse during the 2022 water chestnut pull. SLELO staff examined four HPA's for aquatic invasive species (Map 3) using visual surveys and rake toss. Data was recorded using the iMapInvasives Simple Aquatic Survey (SAS) application.



Map 3. Map of Guffin Bay PCA HPAs examined by SLELO staff in 2022.

The following **Invasive Species** were found:

Invasive Species	Tier Ranking	HPA's Affected
Water chestnut	4	2
Eurasian watermilfoil	4	2
European frog-bit	4	2
Brittle naiad	*	2

* Species is not currently tier ranked

NO NEW TIER 1 OR TIER 2 SPECIES WERE DETECTED IN 2022