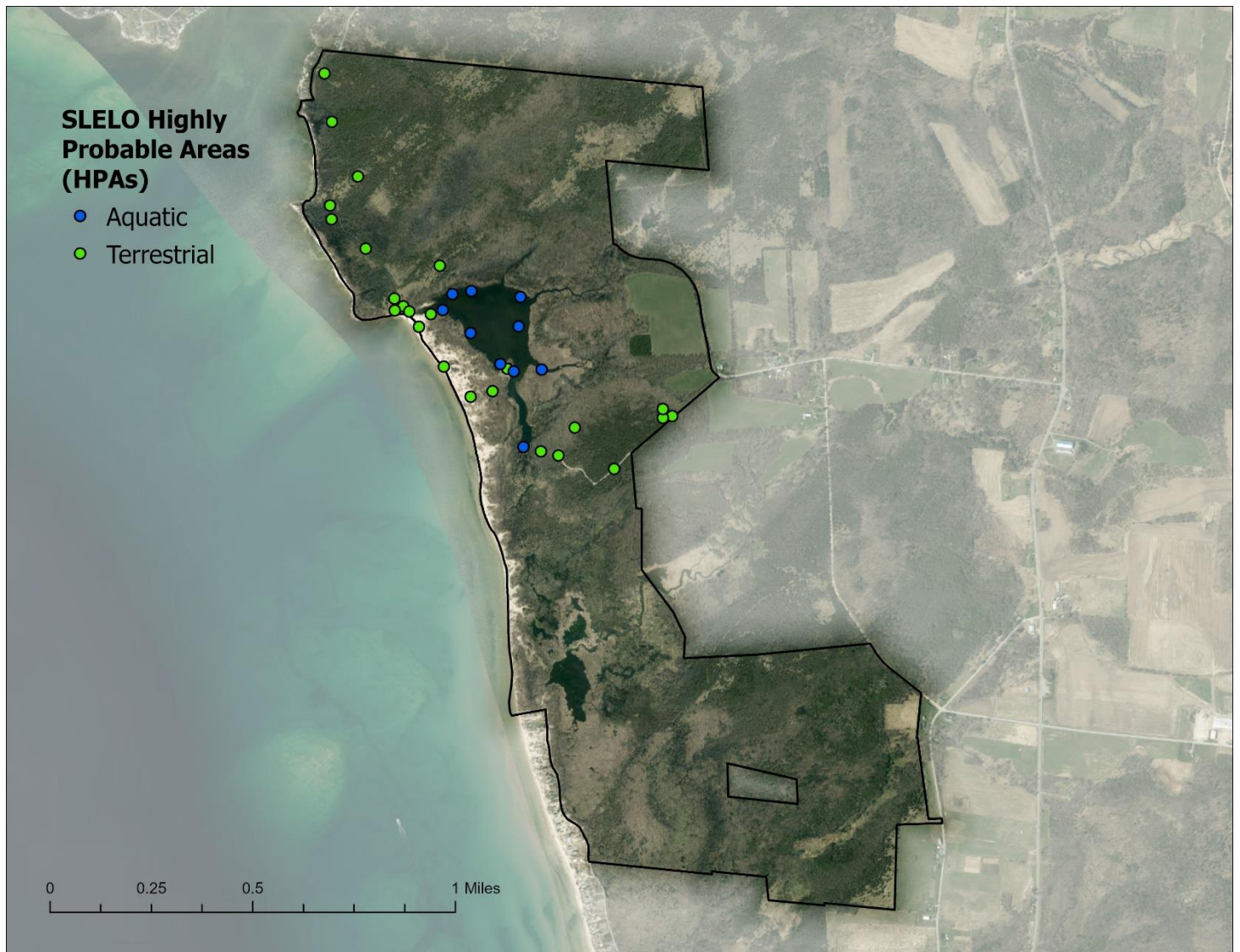


El Dorado Preserve – Black Pond WMA

El Dorado Preserve – Black Pond WMA PCA was surveyed for terrestrial invasive species in June, August, and September and for aquatic invasive species in October by Brittney Rogers and Robert Smith. SLELO staff surveyed 39.36 acres of 25 HPA's for terrestrial invasive species (Map 5) using visual surveys. An additional nine aquatic HPAs using visual surveys and rake tosses. Data was recorded using the iMapInvasives Mobile Advanced (iMMA) and Simple Aquatic Survey (SAS) applications.



Map 5. Map of El Dorado Preserve – Black Pond WMA HPAs examined by SLELO staff in 2022.

The following **Invasive Species** were found:

Invasive Species	Tier Ranking	HPA's Affected
Common reed grass	3	2
Multiflora rose	3	2
Pale swallow-wort	3	14
Starry stonewort	3	3
Water chestnut	3	2
Bush honeysuckle	4	12
Common buckthorn	4	14
Curly-leaf pondweed	4	1
Eurasian watermilfoil	4	3
European frog-bit	4	8
Knapweed spp.	4	3
Purple loosestrife	4	7
Yellow iris	4	3
Bittersweet nightshade	*	4
Brittle naiad	*	1
Butter-and-eggs	*	2
Common mullein	*	1
Creeping jenny	*	4
Eastern helleborine	*	1
European barberry	*	1
Flowering rush	*	1
Garlic mustard	*	2
Lesser periwinkle	*	1

* *Species is not currently tier ranked*

NO NEW TIER 1 OR TIER 2 SPECIES WERE DETECTED IN 2022