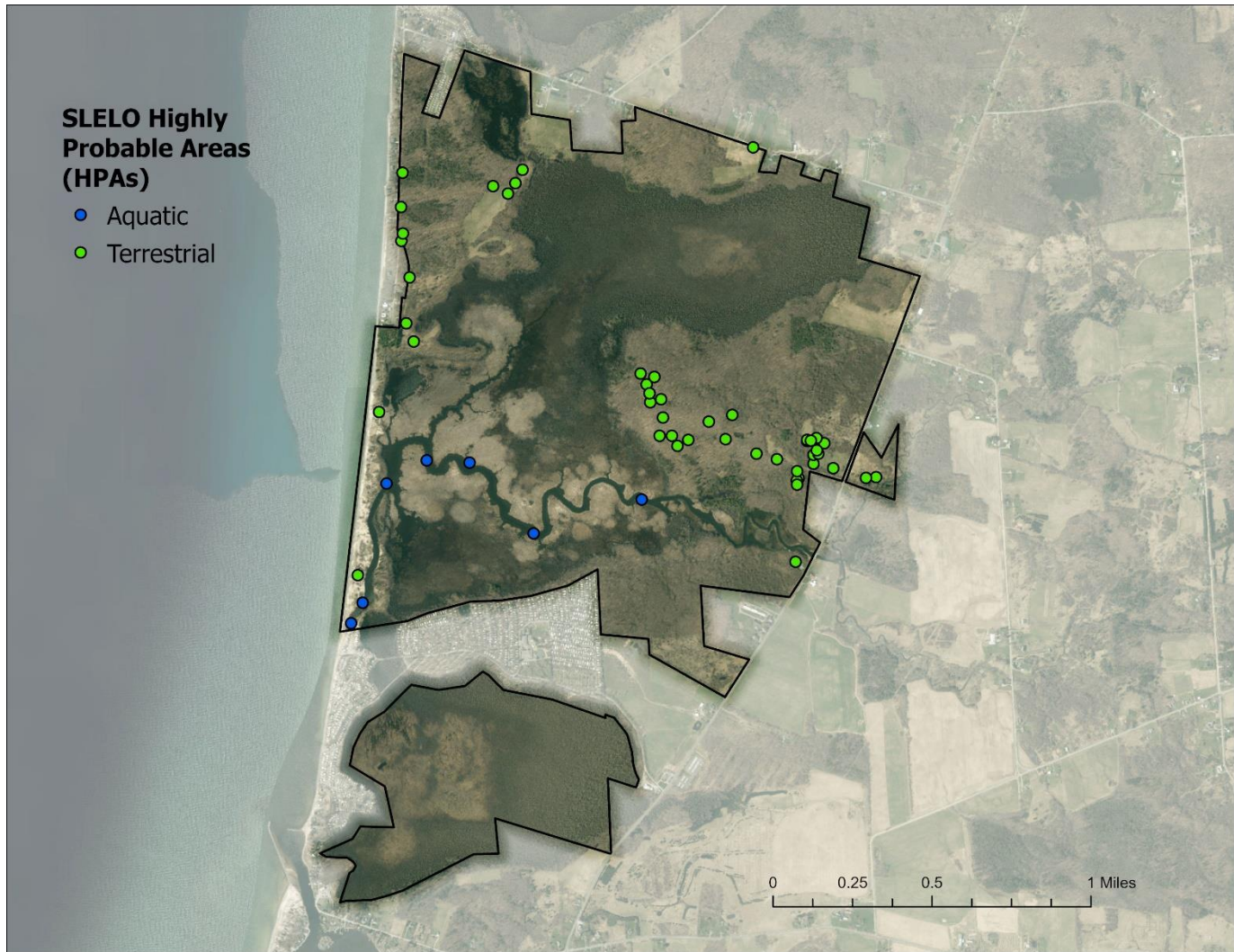


# Deer Creek Marsh WMA

Deer Creek Marsh WMA PCA was surveyed for terrestrial invasive species in June-July and for aquatic invasive species in October by Brittney Rogers and Robert Smith with assistance from Watercraft Inspection Steward Amanda Cooper for the aquatic survey. SLELO staff surveyed 48.41 acres of 47 HPA's for terrestrial invasive species (Map 4) using visual surveys. An additional seven aquatic HPAs using visual surveys and rake tosses. Data was recorded using the iMapInvasives Mobile Advanced (iMMA) and Simple Aquatic Survey (SAS) applications.



**Map 4.** Map of Deer Creek Marsh WMA HPAs examined by SLELO staff in 2022.

**NO NEW TIER 1 OR TIER 2 SPECIES WERE DETECTED IN 2022**

The following **Invasive Species** were found:

Invasive Species	Tier Ranking	HPA's Affected
Common reed grass	3	2
Japanese knotweed	3	4
Japanese stiltgrass	3	1
Multiflora rose	3	19
Pale swallow-wort	3	32
Amur honeysuckle	4	2
Bush honeysuckle	4	6
Common buckthorn	4	6
Curly-leaf pondweed	4	2
Eurasian watermilfoil	4	7
Glossy buckthorn	4	10
Knapweed spp.	4	2
Morrow's honeysuckle	4	5
Purple loosestrife	4	1
Yellow iris	4	1
Bittersweet nightshade	*	3
Black locust	*	3
Blue plantain-lily	*	1
Colt's foot	*	2
Common mullein	*	2
Common St. John's wort	*	1
Common wormwood	*	3
Dame's rocket	*	2
Eastern helleborine	*	2
Garden stonecrop	*	4
Garlic mustard	*	17
Japanese barberry	*	6
Orange daylily	*	3
Tufted vetch	*	1

\* Species is not currently tier ranked