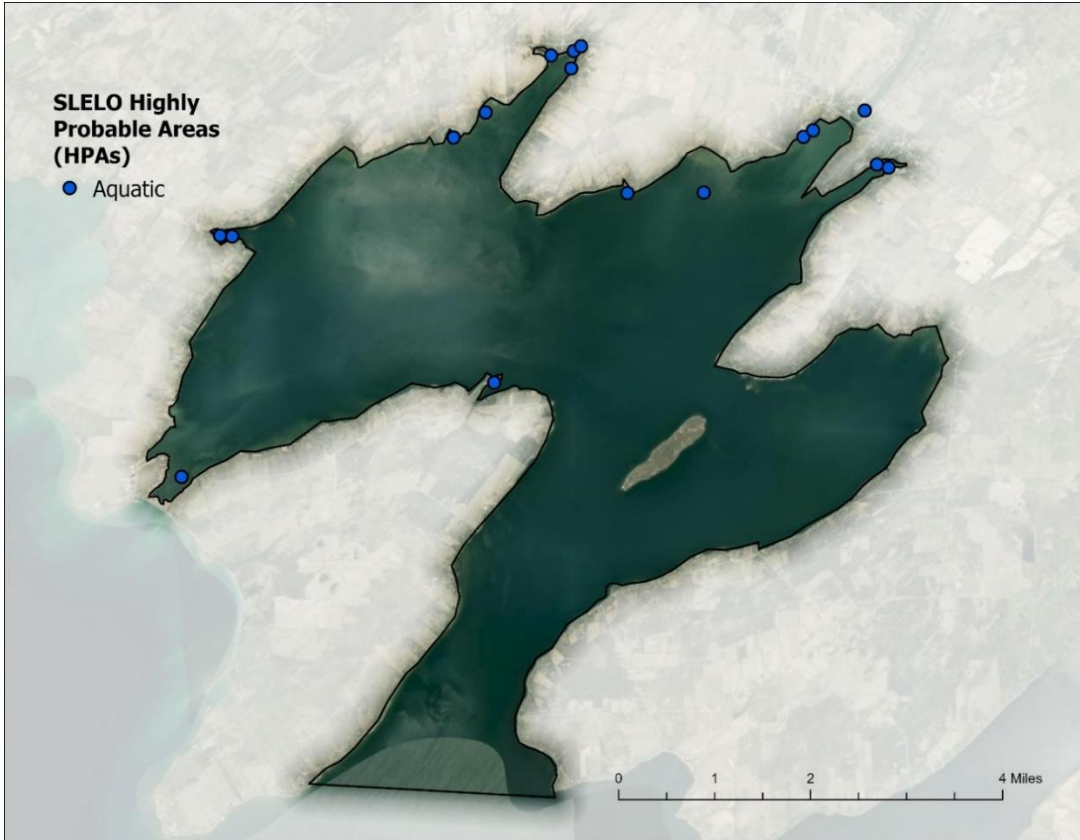


Chaumont Bay

The Chaumont Bay PCA was surveyed in August 2022 by SLELO staff Brittney Rogers, Robert Smith and Rob Williams with assistance from Watercraft Inspection Steward, Alisa Trudell. The team examined 17 HPA's for aquatic invasive species (Map 2) using visual surveys and rake toss. Data was recorded using the iMapInvasives Simple Aquatic Survey (SAS) application.



Map 2. Map of Chaumont Bay PCA HPAs examined by SLELO staff in 2022.

The following **Invasive Species** were found:

Invasive Species	Tier Ranking	HPA's Affected
Curly-leaf pondweed	4	2
Eurasian watermilfoil	4	11
European frog-bit	4	1
Purple loosestrife	4	1
Quagga mussel	4	1
Zebra mussel	4	11
Flowering rush	*	1

* Species is not currently tier ranked

NO NEW TIER 1 OR TIER 2 SPECIES WERE DETECTED IN 2022