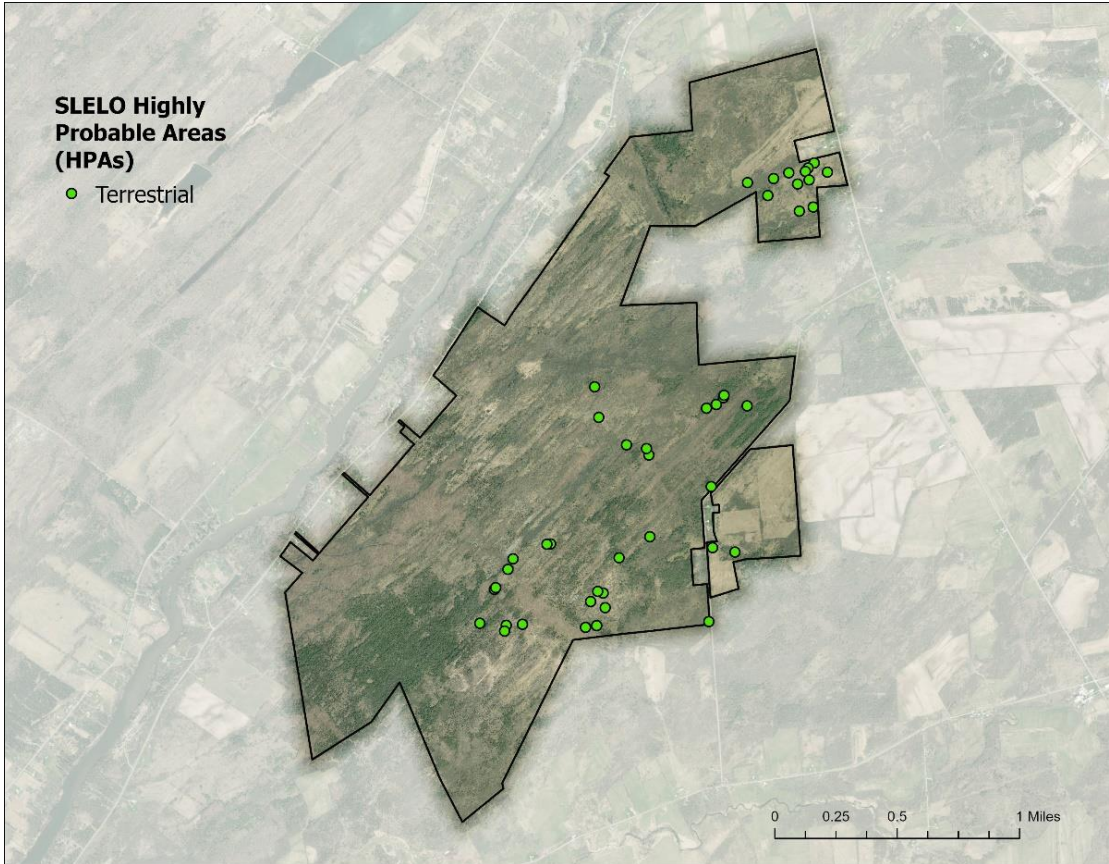


Chaumont Barrens

Chaumont Barrens PCA was surveyed in June, July, and September by Brittney Rogers and Robert Smith. SLELO staff surveyed 55.96 acres of 44 HPA's for terrestrial invasive species (Map 1) using visual surveys. Data was recorded using the iMapInvasives Mobile Advanced (iMMA) application.



Map 1. Map of Chaumont Barrens HPA's examined by SLELO staff in 2022.

The following **Invasive Species** were found:

| Invasive Species | Tier Ranking | HPA's Affected |
|------------------------|--------------|----------------|
| Pale swallow-wort | 3 | 39 |
| Bush honeysuckle | 4 | 7 |
| Common buckthorn | 4 | 6 |
| Glossy buckthorn | 4 | 1 |
| Knapweed spp. | 4 | 2 |
| Bittersweet nightshade | * | 1 |
| Garlic mustard | * | 1 |

* Species is not currently tier ranked

NO NEW TIER 1 OR TIER 2 SPECIES WERE DETECTED IN 2022