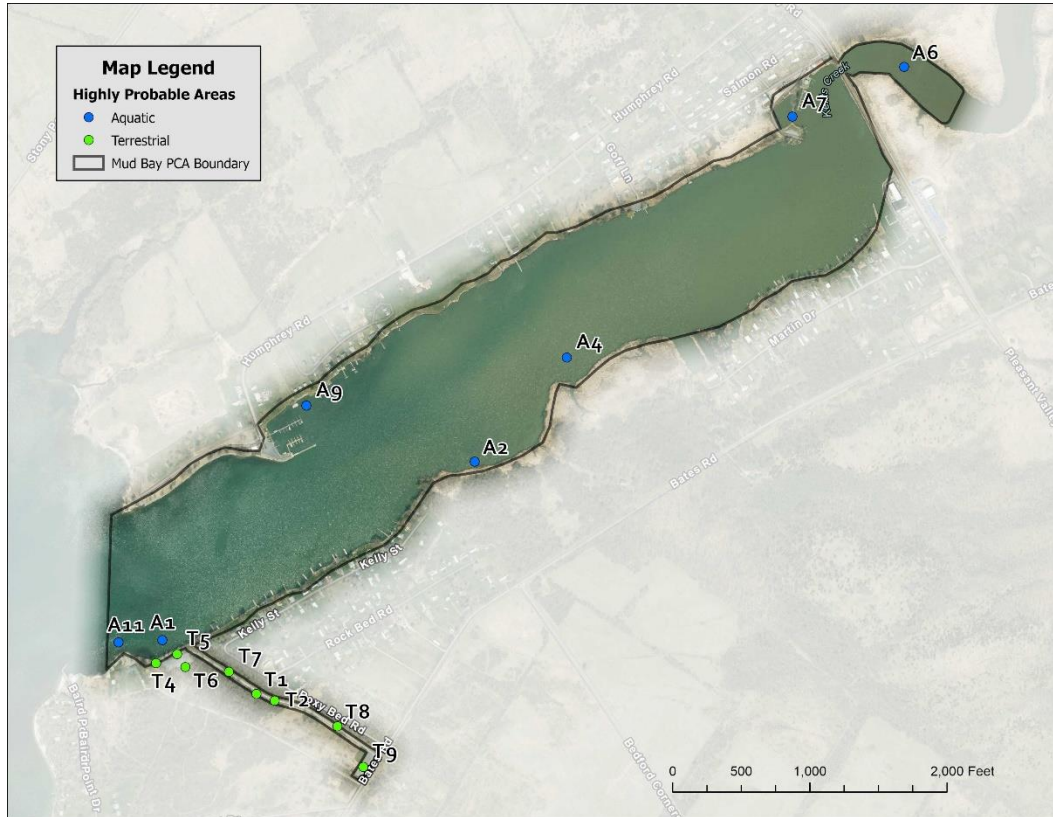


Mud Bay

Mud Bay PCA was surveyed for terrestrial invasive species in August and aquatic invasive species in July 2021 by Brittney Rogers and Robert Smith. SLELO staff performed visual surveys at ~1.62 acres of eight terrestrial HPAs throughout the PCA. Seven aquatic HPAs were examined by visual survey and rake toss (Map 3). Data was recorded using iMapInvasives SAS Pro and iMMA applications.



Map 3. Map of Mud Bay HPAs examined by SLELO staff in 2021.

The following **Invasive Species** were found:

Invasive Species	Tier Ranking	HPA's Affected
Common buckthorn	3	6
Pale swallow-wort	3	3
Eurasian watermilfoil	4	7
Honeysuckle spp.	4	5
Purple loosestrife	4	1
Wild parsnip	4	1
Brittle naiad	*	1

* Species is not currently tier ranked

NO NEW TIER 1 OR TIER 2 SPECIES WERE DETECTED IN 2021