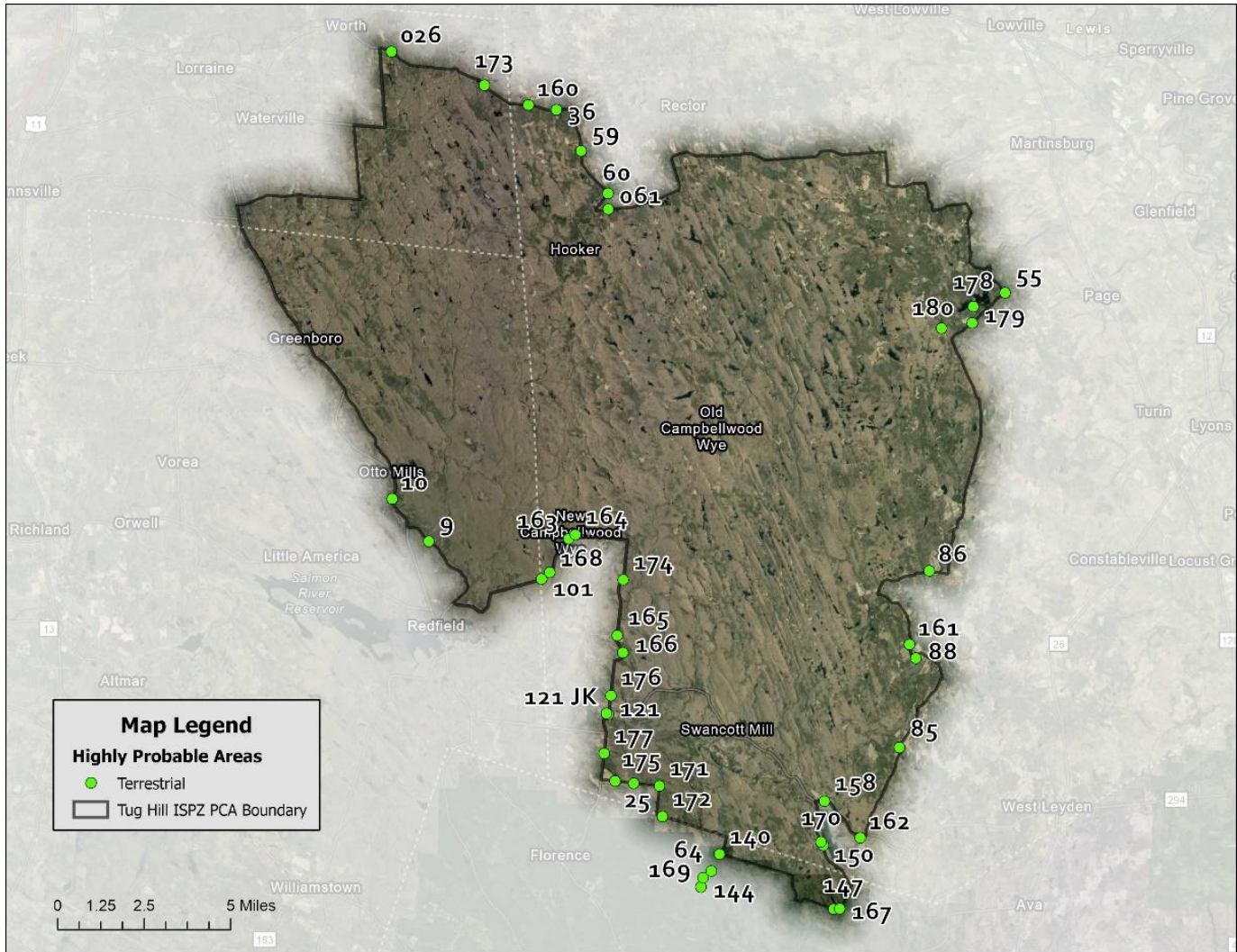


# Tug Hill Invasive Species Prevention Zone (ISPZ)

Tug Hill ISPZ PCA was surveyed in September and October 2021 by Brittney Rogers and Robert Smith. SLELO staff performed visual surveys at ~27.34 acres of 42 terrestrial HPAs throughout the PCA (Map 9). Data was recorded using iMapInvasives iMMA application.



Map 9. Map of Tug Hill ISPZ HPAs examined by SLELO staff in 2021.

The following **Invasive Species** were found:

Invasive Species	Tier Ranking	HPA's Affected
Giant hogweed	2	1
Common reed grass	3	10
Japanese knotweed	3	11
Pale swallow-wort	3	1
Honeysuckle spp.	4	6
Purple loosestrife	4	2
Wild parsnip	4	6
Bishops' goutweed	*	4
Bittersweet nightshade	*	1
Black locust	*	1
Colt's foot	*	12
Common St. John's wort	*	3
Creeping jenny	*	1
European lily-of-the-valley	*	1
Garden stonecrop	*	1
Garlic mustard	*	3
Mugwort	*	3
Reed canary grass	*	1
Tufted vetch	*	1

\* Species is not currently tier ranked

**NO NEW TIER 1 OR TIER 2 SPECIES WERE DETECTED IN 2021**