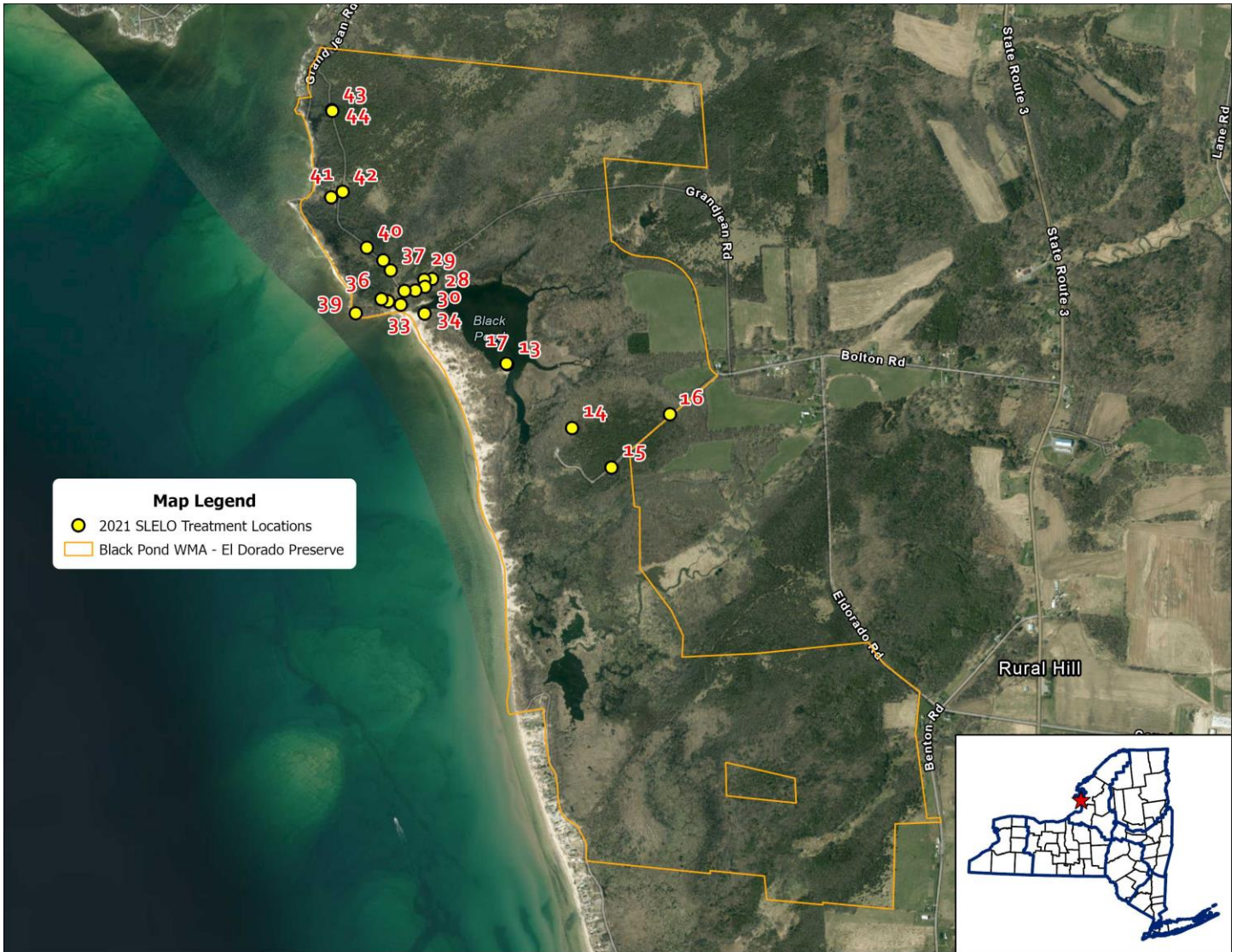


Black Pond WMA – El Dorado Preserve



Map Label	Date of Treatment	Species Treated	Treated Area (SQFT)	Treated Area (Acres)	Latitude	Longitude
13	7/3/2021	Pale Swallowwort	5,743.30	0.13	43.80161	-76.22132
14	7/2/2021	Pale Swallowwort	14,1846.00	3.26	43.80523	-76.22653
15	7/2/2021	Pale Swallowwort	45,098.05	1.04	43.80526	-76.22657
16	7/2/2021	Pale Swallowwort	15,370.37	0.35	43.80300	-76.22329
17	8/3/2021	Phragmites	2,164.99	0.05	43.80354	-76.21848
28	7/1/2022	Pale Swallowwort	878.31	0.02	43.80823	-76.2303
29	7/1/2022	Pale Swallowwort	2,374.55	0.05	43.8082	-76.2307
30	7/1/2022	Pale Swallowwort	1,545.56	0.04	43.80795	-76.2306
31	7/1/2022	Pale Swallowwort	2,757.30	0.06	43.80782	-76.2311
32	7/1/2022	Pale Swallowwort	3,641.31	0.08	43.80779	-76.2317
33	7/1/2022	Pale Swallowwort	9,592.08	0.22	43.8073	-76.2318
34	8/2/2022	Phragmites	2,196.44	0.05	43.80699	-76.2306
35	7/1/2022	Pale Swallowwort	5,934.55	0.14	43.80741	-76.2324
36	7/1/2022	Pale Swallowwort	2,269.83	0.05	43.8075	-76.2328
37	7/1/2022	Pale Swallowwort	3,113.49	0.07	43.80851	-76.2323

38	7/1/2022	Pale Swallowwort	1,518.95	0.03	43.80887	-76.2327
39	7/1/2022	Pale Swallowwort	1,510.20	0.03	43.80697	-76.234
40	7/6/2022	Pale Swallowwort	907.92	0.02	43.80931	-76.2335
41	7/1/2022	Pale Swallowwort	28,273.00	0.65	43.81109	-76.2353
42	7/6/2022	Pale Swallowwort	1,869.21	0.04	43.81129	-76.2348
43	7/1/2022	Pale Swallowwort	719.61	0.02	43.8142	-76.2354
44	7/6/2022	Pale Swallowwort	670.48	0.02	43.81417	-76.2353