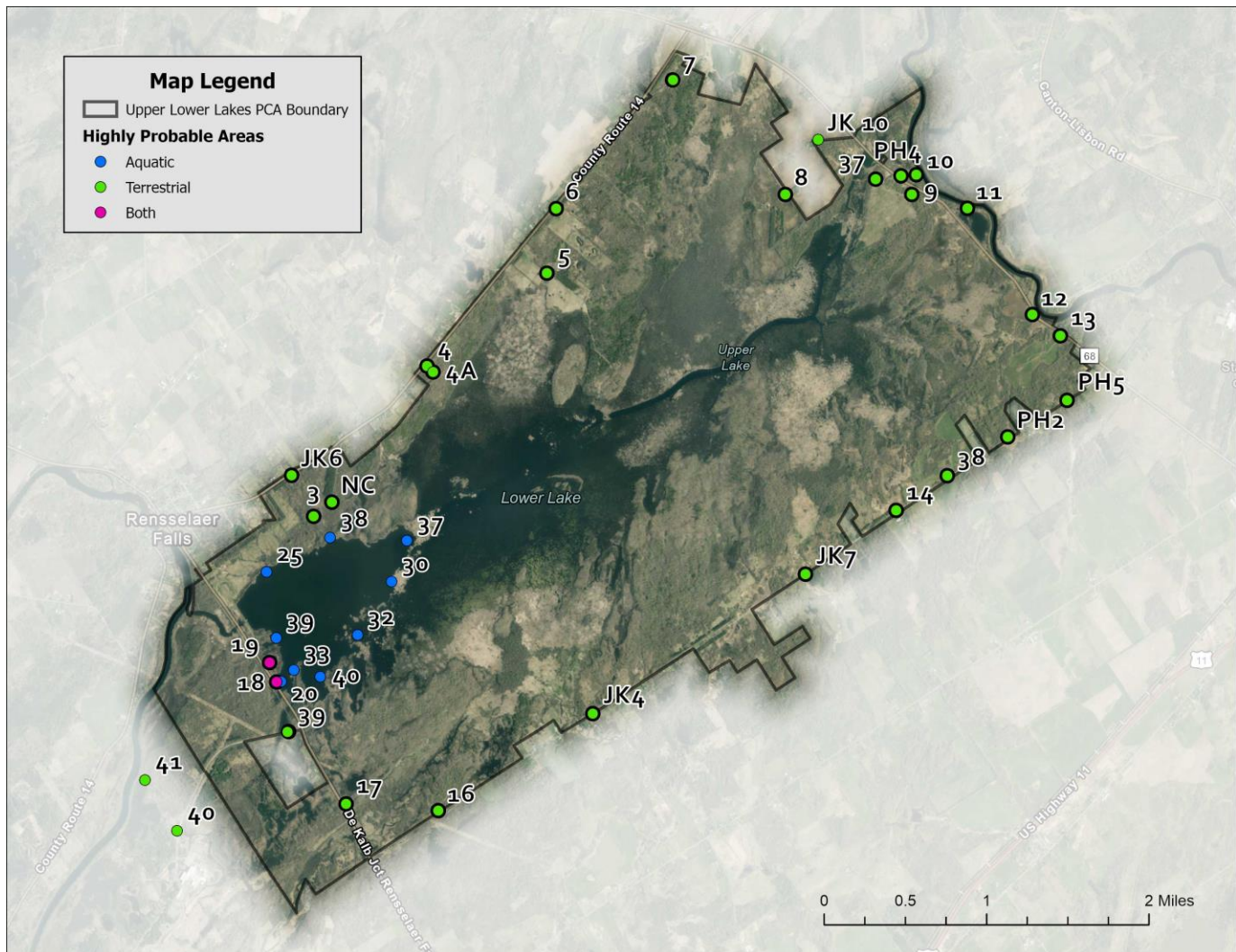


# Upper and Lower Lakes WMA

Upper and Lower Lakes WMA PCA was surveyed for terrestrial invasive species in July-September and aquatic invasive species in October 2021 by Brittney Rogers, Robert Smith, and Megan Pistolese. SLELO staff performed visual surveys at ~22.77 acres of 27 terrestrial HPAs throughout the PCA. Nine aquatic HPAs on Lower Lake were examined by visual survey and rake toss (Map 2). Data was recorded using iMapInvasives SAS Pro and iMap Mobile Advanced (iMMA) monitoring tools.



**Map 2.** Map of Upper Lower Lakes HPAs examined by SLELO staff in 2021.

The following **Invasive Species** were found:

Invasive Species	Tier Ranking	HPA's Affected
Common buckthorn	3	18
Common reed grass	3	3
Japanese knotweed	3	6
Oriental bittersweet	3	8
Pale swallow-wort	3	1
Eurasian watermilfoil	4	7
European frog-bit	4	10
Honeysuckle spp.	4	18
Purple loosestrife	4	5
Spotted knapweed	4	3
Wild parsnip	4	17
Banded mystery snail	*	5
Black locust	*	1
Chinese mystery snail	*	1
Bittersweet nightshade	*	1
Common St. John's wort	*	2
Common valerian	*	1
Garlic mustard	*	2
Great mullein	*	2
Tufted vetch	*	5
White poplar	*	1

\* Species is not currently tier ranked

**NO NEW TIER 1 OR TIER 2 SPECIES WERE DETECTED IN 2021**