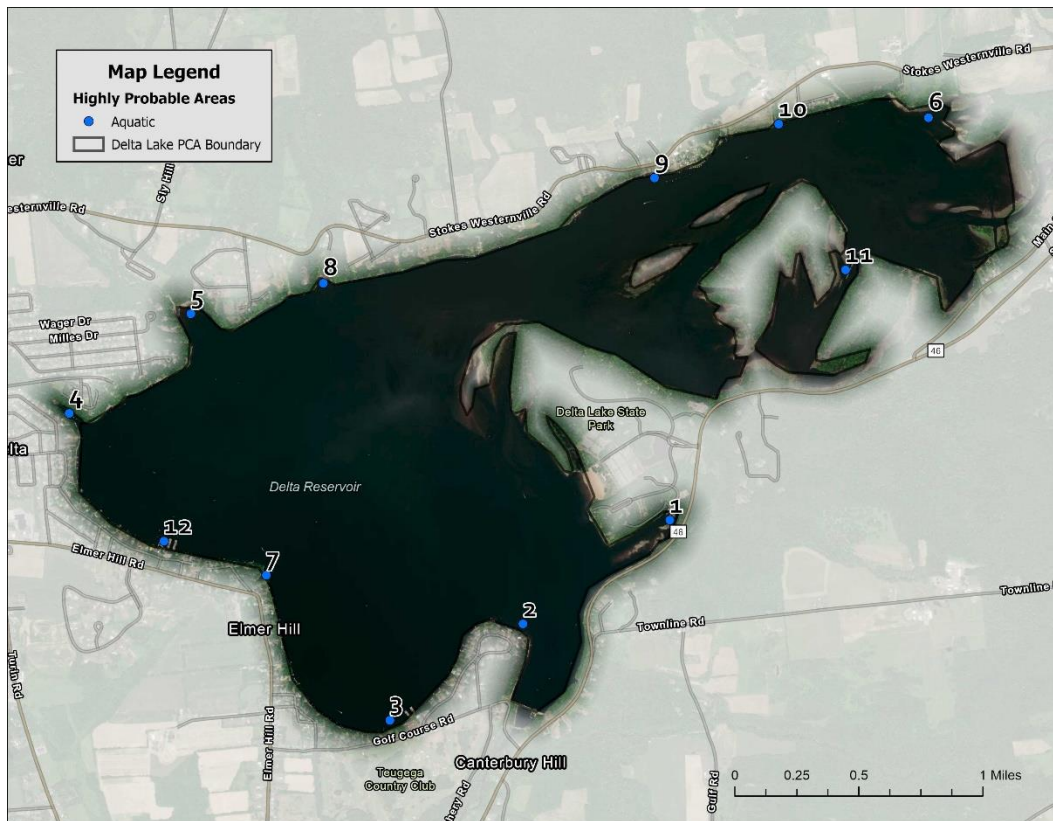


Delta Lake

Delta Lake PCA was surveyed in August 2021 by Brittney Rogers and Robert Smith. SLELO staff examined 12 HPA's for aquatic invasive species (Map 8) using visual surveys and rake tosses. Data was recorded using iMapInvasive's SAS Pro mobile monitoring tool.



Map 8. Map of Delta Lake HPAs examined by SLELO staff in 2021.

The following **Invasive Species** were found:

| Invasive Species | Tier Ranking | HPA's Affected |
|-----------------------|--------------|----------------|
| Common reed grass | 3 | 2 |
| Eurasian watermilfoil | 4 | 5 |
| Purple loosestrife | 4 | 1 |
| Brittle naiad | * | 8 |

* Species is not currently tier ranked

NO NEW TIER 1 OR TIER 2 SPECIES WERE DETECTED IN 2021