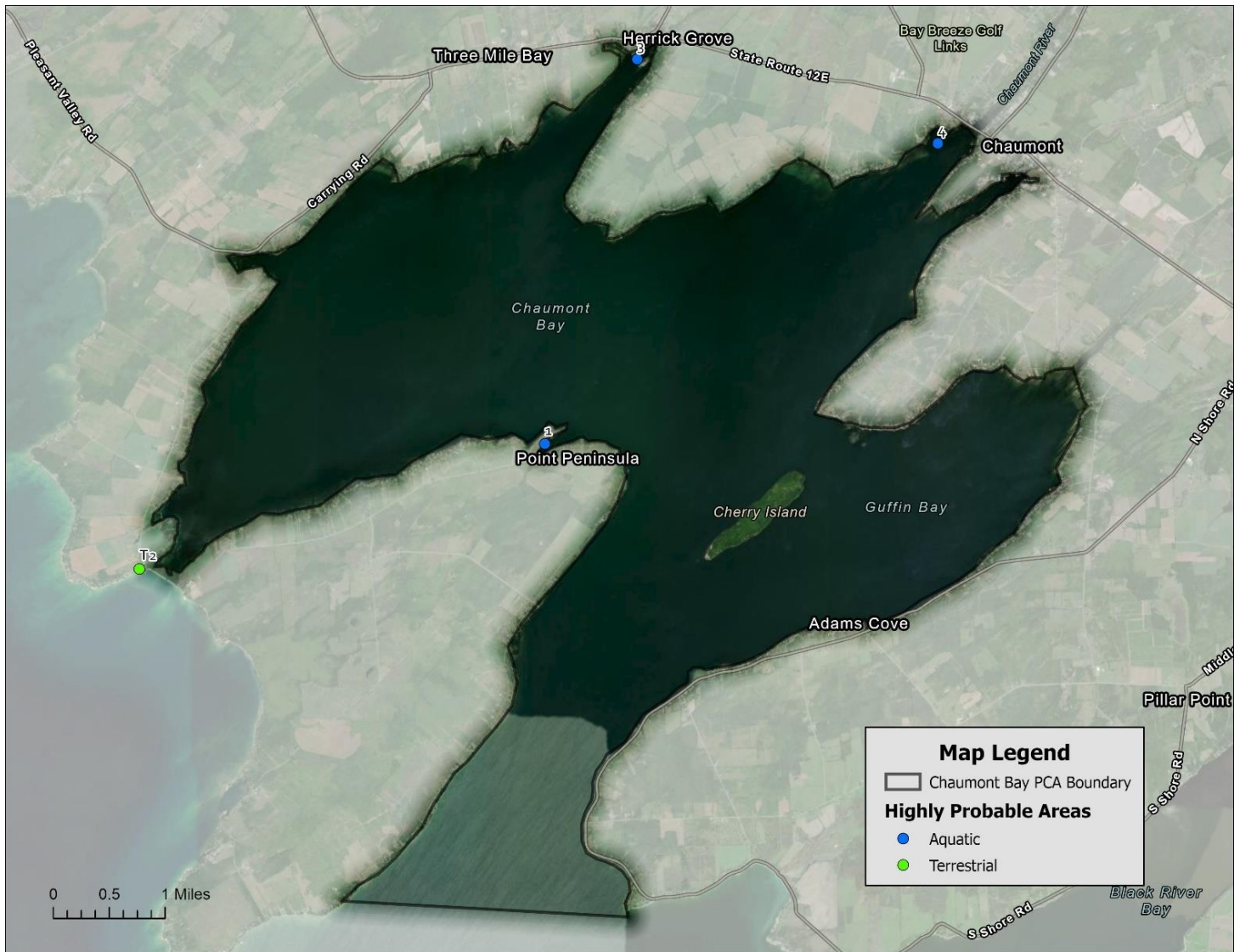


Chaumont Bay

Chaumont Bay PCA was surveyed in August 2020 by Brittney Rogers and Robert Smith. SLELO staff examined three HPA's for aquatic invasive species and one HPA for terrestrial invasive species (Map 4) using visual surveys and rake tosses. Data was recorded using iMapInvasives SAS) Pro and iMMA monitoring tools.



Map 4. Map of Chaumont Bay HPAs examined by SLELO staff in 2020.

The following **Invasive Species** were found:

Invasive Species	Tier Ranking	HPA's Affected	Total Extent (infested acres)
Common buckthorn	3	1	0.004
Pale swallow-wort	3	1	0.004
Curly-leaved pondweed	4	1	-
Eurasian water-milfoil	4	3	-
European frog-bit	4	1	-
Purple loosestrife	4	1	0.058
Zebra mussel	4	3	-
Butter-and-eggs	*	1	0.058
Climbing nightshade	*	1	0.058
Honeysuckle spp.	*	1	0.004

* *Species is not currently ranked* - *Extent data not available* + *Full extent at HPAs not mapped*

NO NEW TIER 1 OR TIER 2 SPECIES WERE DETECTED IN 2020

Management Summary

Pale swallow-wort is a priority management species at the Chaumont Bay PCA. Two sites (total 2.8 acres) were treated in 2020 via selective application of triclopyr based herbicide.