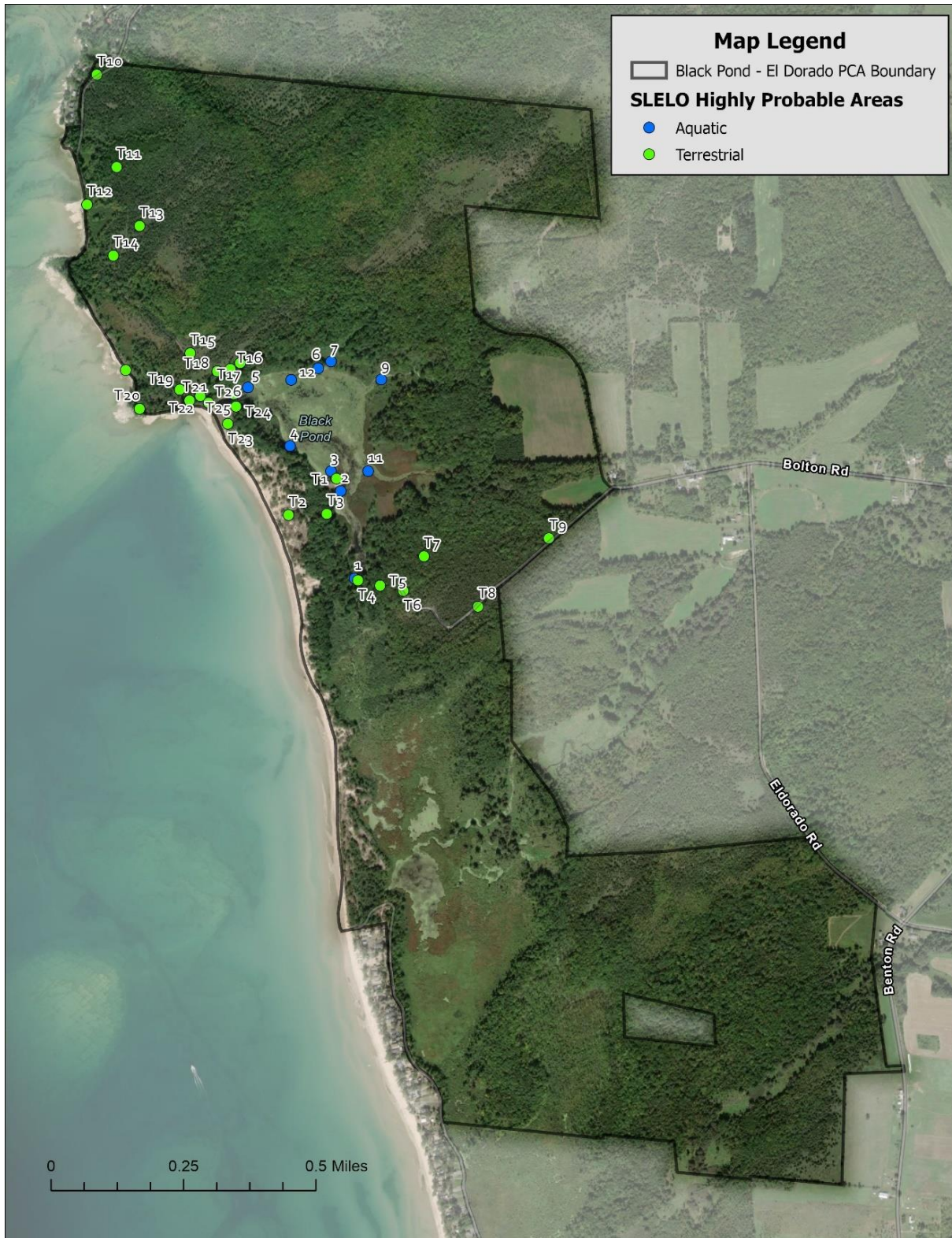


Black Pond WMA – El Dorado Preserve

Black Pond Wildlife Management Area (WMA) and El Dorado Nature Preserve were surveyed in July 2020 by Brittney Rogers and Robert Smith. SLELO staff performed visual surveys at ~36 acres of 26 terrestrial HPAs throughout the PCAs. Ten aquatic HPAs on Black Pond were surveyed by rake toss (Map 2). Data was recorded using iMapInvasives SAS Pro and iMap Mobile Advanced (iMMA) monitoring tools.



Map 2. Map of Black Pond – El Dorado HPAs examined by SLELO staff in 2020.

The following **Invasive Species** were found:

Invasive Species	Tier Ranking	HPA's Affected	Total Extent (infested acres)
Common buckthorn	3	7	2.86+
Common reed grass	3	2	0.04
Pale swallow-wort	3	12	1.04
Yellow iris	3	2	0.002
Curly-leaved pondweed	4	3	-
Eurasian water-milfoil	4	3	-
European frog-bit	4	7	-
Leafy spurge	4	1	0.02
Purple loosestrife	4	4	0.03
Climbing nightshade	*	2	0.02
Common barberry	*	1	-
Creeping jenny	*	3	0.51
Eastern helleborine	*	1	-
Garlic mustard	*	3	0.27
Great mullein	*	2	0.01
Honeysuckle spp.	*	9	0.57

* Species is not currently ranked - Extent data not available + Full extent at HPAs not mapped

NO NEW TIER 1 OR TIER 2 SPECIES WERE DETECTED IN 2020

Management Summary

Pale swallow-wort and common reed grass are both priority management species at the Black Pond – El Dorado PCA. Two common reed grass infestations and four pale swallow-wort infestations were treated with a selective application of herbicide. Common reed treatments impacted 0.04 acres, while pale swallow-wort treatments covered approximately 8.06 acres of the PCA.