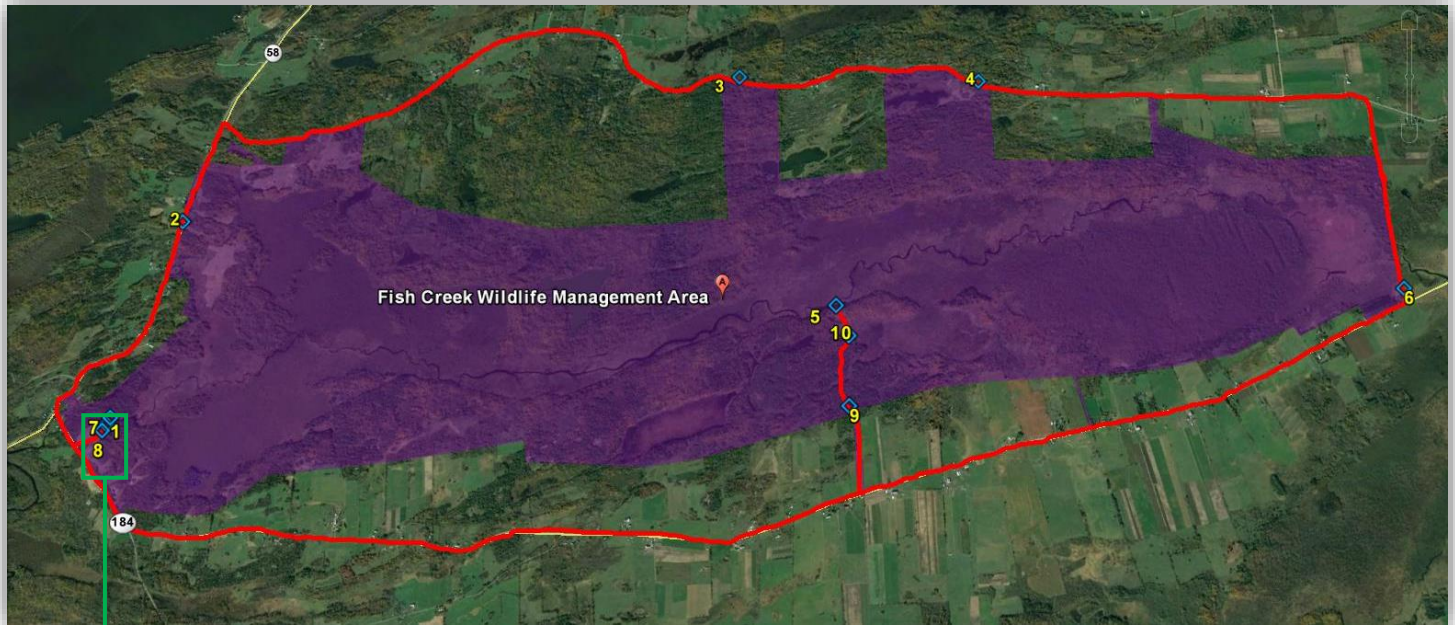


# Fish Creek Wildlife Management Area – August 8<sup>th</sup> and 9<sup>th</sup> 2019

## SLELO-PRISM Early Detection Surveillance

Report prepared on August 19, 2019 by Brittney Rogers, Aquatic Restoration and Resiliency Coordinator



### Survey Methods and Observations

The Fish Creek Wildlife Management Area was surveyed in August 2019 by the SLELO staff, Brittney Rogers and Megan Pistolese (see map above). The survey involved examining highly probable areas (HPAs) for both terrestrial and aquatic invasive species. The location of each HPA was marked using a handheld Garmin GPSmap 62. Ten HPAs were resurveyed based on previous field surveys. Visual observations were conducted for terrestrial surveillance to find and identify invasive species within the HPAs. Aquatic HPAs were surveyed visually and via rake toss method, a double-sided rake tossed off both ends of the canoe to collect aquatic vegetation. The vegetation attached to the rake was identified and determined to be invasive or native.

The following ‘**Target Management Species**’ were found during the field survey (see tables on page 2):

- Common buckthorn (*Rhamnus cathartica*),
- Glossy buckthorn (*Frangula alnus*),
- Japanese knotweed (*Fallopia japonica*), and
- Pale swallow-wort (*Cynanchum rossicum*).

Pale swallow-wort, which was found in the 2017 field survey, was found at HPA 7 and 8. Six swallow-wort plants found were removed by hand from sites PSW 1-3 and PSW 6 by the early detection team all of which had an abundance of seed pods attached. Each site (PSW 1-7) should be re-evaluated during the next Fish Creek WMA survey for continued management. The HPA 1 aquatic site had a high abundance of native bladder-wort, pickerel weed and water lily. HPA 5 was surrounded by a large hemlock stand which has been added to SLELO PRISM's HWA volunteer surveillance network survey sites for the winter or early spring. The team encountered a large construction site along the road near HPA 3 so an additional survey in that region should be included in the 2021 field survey.

**No new Prevention or Target Management Species were found during the 2019 field survey.**

HPA	Terrestrial Habitat Description	Latitude	Longitude	Invasive Species
1	Pope Mills Handicap Trail & Canoe Launch	44.48608	-75.57615	CB, CF, HS, PL, PSW, WP
2	Rt. 58 Parking Area	44.49898	-75.58290	CB, HS, IH
3	Bishop Road Parking Area	44.52877	-75.54670	HS, IH, PL, M
4	Lake Road West Parking Area	44.53765	-75.52670	HS, JK, M, WP
5	Parking Area, Trail & Canoe Launch	44.51833	-75.52640	CB, PL, WP
6	Factory Rd. Intersection Parking Area	44.54022	-75.48260	CB, CT, FB, HS, IH, PL, WP
7	Pope Mills Parking Area	44.48517	-75.57594	CB, PSW, WP
8	Pope Mills Additional Parking Area	44.48563	-75.57600	CB, CF, HS, PSW, WP
9	Parking Area	44.51302	-75.52040	CB, CT, HS, IH
10	Parking Area	44.51704	75.52389	CB, HS

Pale Swallow-wort Points	Latitude	Longitude	2019 Survey
PSW1 (HPA 7)	44.48540	-75.57587	Present (removed 1 plant)
PSW2 (HPA 7)	44.48511	-75.57581	Present (removed 1 plant)
PSW3 (HPA 8)	44.48545	-75.57626	Present (removed 2 plants)
PSW4 (HPA 8)	44.48555	-75.57632	Not present/found.
PSW5 (HPA 8)	44.48569	-75.57619	Not present/found.
PSW6 (HPA 8)	44.48573	-75.57595	Present (removed 2 plants)
PSW7 (HPA 1)	44.48600	-75.57589	Not present/found.

HPA	Aquatic Habitat Description	Latitude	Longitude	Throw	Depth (ft)	# Spp.	# Inv.	Inv. Type	Visuals
1	Canoe Launch Near Handicap Trail	44.48608	-75.57615	1	5	4	0	-	CB, FB, HS, PL
				2		3	1	FB	
5	Canoe Launch Near Parking Area	44.51833	-75.52640	1	3	4	1	FB	FB, PL
				2		4	1	FB	

**Invasive Species Identified Key:**

CB = Common Buckthorn, CF = Coltsfoot, CT = Canada Thistle, FB = European Frogbit, GB = Glossy Buckthorn, HS = Honeysuckle spp., IH = *Inula helenium* (elecampane), JK = Japanese Knotweed, M = Common Mullein, PL = Purple Loosestrife, PSW = Pale Swallow-wort, WP = Wild Parsnip