

St. Lawrence Eastern Lake Ontario Partnership for Regional Invasive Species Management
2018 Field Survey

El Dorado Beach Preserve and Black Pond

SLELO-PRISM Early Detection Surveillance



July 2nd, 3rd, 9th

Report prepared on July 9th by Emma Gutierrez and Sarah Kirkpatrick

Background

In July of 2018, SLELO Early Detection team Emma Gutierrez and Sarah Kirkpatrick conducted the first full survey of the area for both “Target Management” and “Prevention Watch-list” invasive species. El Dorado is a beach preserve located in Henderson, New York and maintained by the Nature Conservancy. It is made up of important ecosystems along the shoreline of Lake Ontario. The preserve houses dunes, marshes, woodlands, meadows, and shoreline, which provide ample habitat for nesting shore and migratory birds, making the site an area of high conservation concern. The dunes are highly delicate and protected by fencing and crews in the summer to prevent damage. Due to its pristine beaches and ample birdwatching, this is also a site of high human traffic. The area can be accessed from two trailheads. These are intertwined with scenic boardwalk paths and educational signage for the public. Black Pond is also located within the preserve and is a New York State DEC Wildlife Management Area. It is also an integral coastal habitat for many species in the area, especially fish, invertebrates, and birds.



Fig. 1: Site Location

SLELO-PRISM

c/o The Nature Conservancy - 269 Ouderkirk Road. Pulaski, NY 13142

Rob Williams, Coordinator



Fig. 2: Some notable native species at El Dorado including (from L to R) Canada Lily, Monarch caterpillar, and Red Baneberry

Methods and Observations

No Prevention “Watch-list” species were found in the 2018 survey.

Surveys were done at Highly Probable Areas (HPAs), or areas more likely to be exposed to invasives. Due to high disturbance, many of these areas were sought along the hiking trails, parking areas, and boardwalks. Terrestrial sites were accessed by foot. GPS coordinates were recorded where invasives were of abundance and mapped out using Google Earth (Fig. 5,6). Aquatic surveys at decided HPAs (Table 1) were conducted in Black Pond using a canoe (Fig. 7). A weighted rake was tossed from either side of the canoe and dragged along the bottom to collect plant specimens for identification.

No Prevention “Watch-list” Species were found at either El Dorado or Black Pond. Multiple Target Management species were recorded and were often found with large populations of common native species. Terrestrial invasives included large amounts of Glossy Buckthorn and Honeysuckle, along with more scattered populations of Garlic Mustard, Leafy Spurge, Swallow-wort, and Purple Loosestrife. Some small populations of swallow-wort are being managed by the SLELO PRISM Rapid Response Team. Aquatic invasives included significant accumulations of European Frog-bit (Fig. 4), along with scattered Curly-leaf Pondweed, Brittle Naiad, and Eurasian Milfoil.



Fig. 3: Dense vegetation seen in Black Pond made up of both native and invasive aquatic species



Fig. 4: Some commonly seen invasives including (from L to R) European Frog-bit, Purple Loosestrife, and Brittle Naiad

Table 1: Aquatic HPAs, Descriptions, Locations, and Observations

HPA	Description	Longitude	Latitude	Toss	Depth	Invasives	Visuals
1	Along boardwalk	43.802990	-76.225953	1	2.5	-	CL, FB, PL
				2	2.5	FB	
2	Bird observation deck	43.8048503	-76.226437	1	6.5	FB	FB, CL, PL
				2	4.5	-	
3	Quiet Cove	43.8053178	-76.226848	1	2	CL	CL, FB
				2	2	BN	
4	Marshy area	43.8059651	-76.228434	1	3.5	FB	FB
				2	2	-	
5	Mouth of inlet	43.8076029	-76.229996	1	2	FB	FB, PL, CL
				2	2	-	
6	Marshy area	43.8081611	-76.227231	1	2	FB	FB
				2	2	CL	
7	Inlet	43.8083607	-76.226931	1	1.5	-	FB
				2	1.5	FB	
8	Mouth of creek	43.8075768	-76.225585	1	1.5	-	FB, EM
				2	1.5	FB	
9	Partway down river	43.8078751	-76.225018	1	3	-	EM, FB
				2	1.5	-	
10	Marshy Area	43.8056762	-76.225828	1	2	FB	FB
				2	2	FB	
11	Partway down river	43.8053038	-76.225402	1	2.5	CL	FB
				2	2.5	FB	

KEY: FB= European Frog-bit

EM= Eurasian Milfoil

CL= Curly-leaf Pond-weed

PL= Purple Loosestrife

BN= Brittle Naiad

SLELO-PRISM

c/o The Nature Conservancy - 269 Ouderkirk Road. Pulaski, NY 13142

Rob Williams, Coordinator

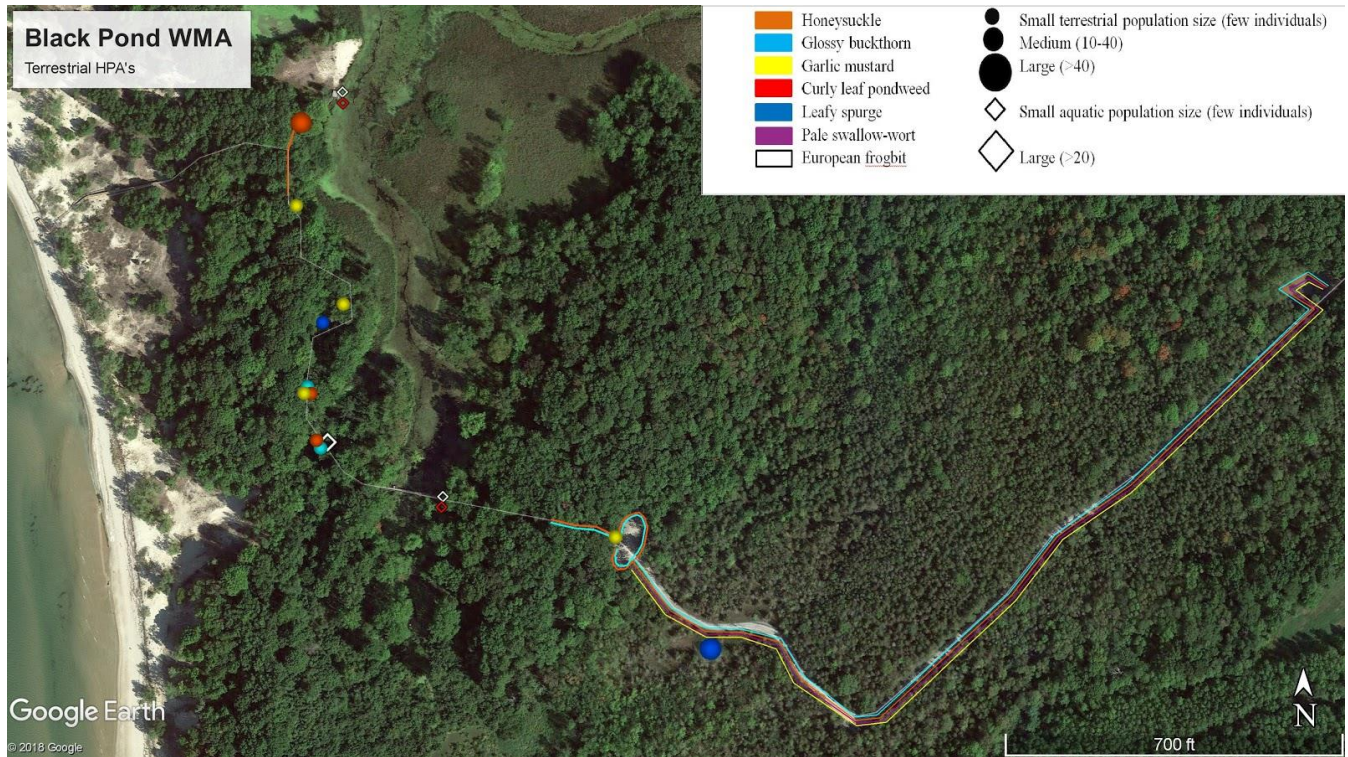
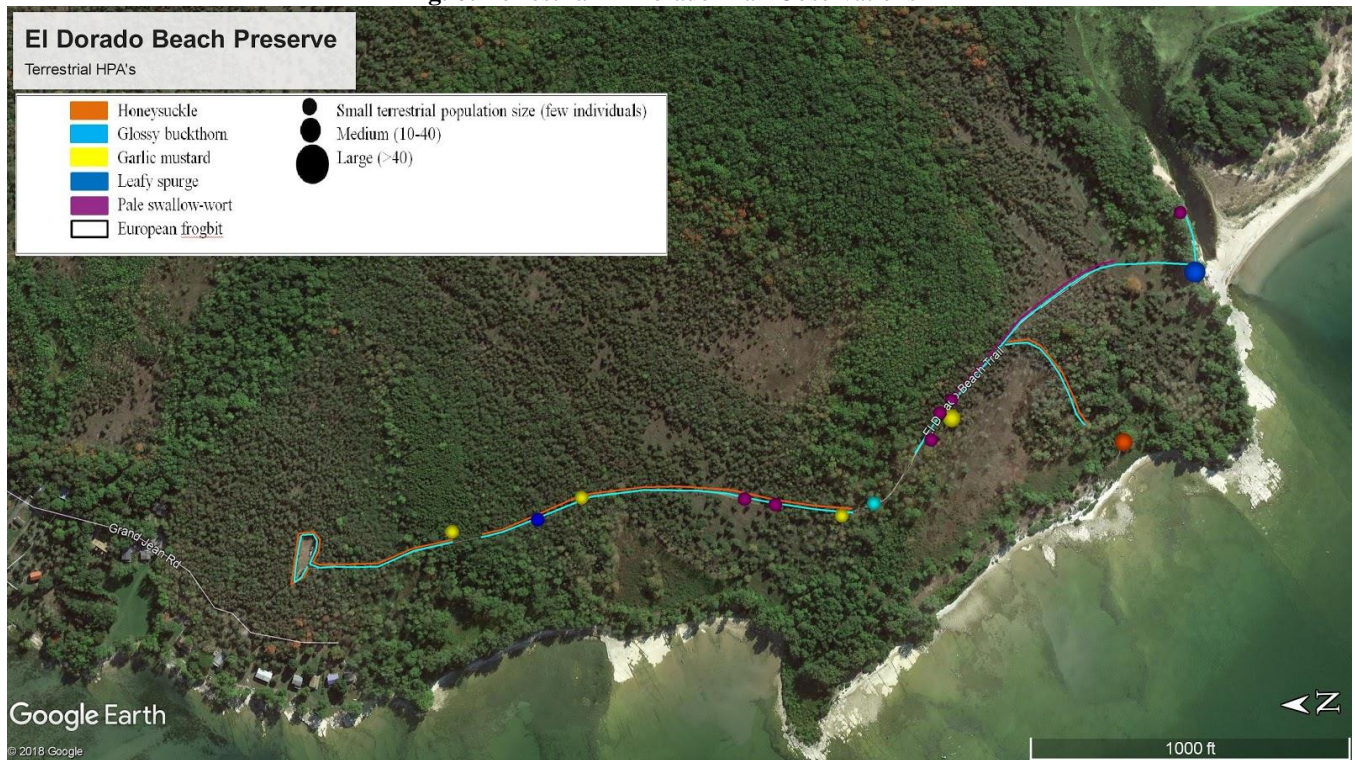
Fig. 5: Terrestrial Black Pond Observations**Fig. 6: Terrestrial El Dorado Trail Observations**

Fig. 7: Aquatic HPAs and Canoe Path



SLELO-PRISM
c/o The Nature Conservancy - 269 Ouderkerk Road. Pulaski, NY 13142
Rob Williams, Coordinator