



# Early Detection Field Report

## Black Lake Priority Conservation Area

Report prepared October 2020.

### SURVEY METHODS AND OBSERVATIONS:

Black Lake Priority Conservation Area (PCA) was surveyed on July 16<sup>th</sup>, 2020 by Brittney Rogers and Robert Smith. SLELO staff examined ten highly probable areas (HPA's) for aquatic invasive species (Map 1) using visual surveys and rake tosses. Data was recorded using iMapInvasive's Simple Aquatic Survey (SAS) Pro mobile monitoring tool. Two stakeholders reported a possible population of water chestnut following the 2020 field survey completion. Staff responded to the location and were unsuccessful at finding the population but have alerted partners and will continue to monitor.

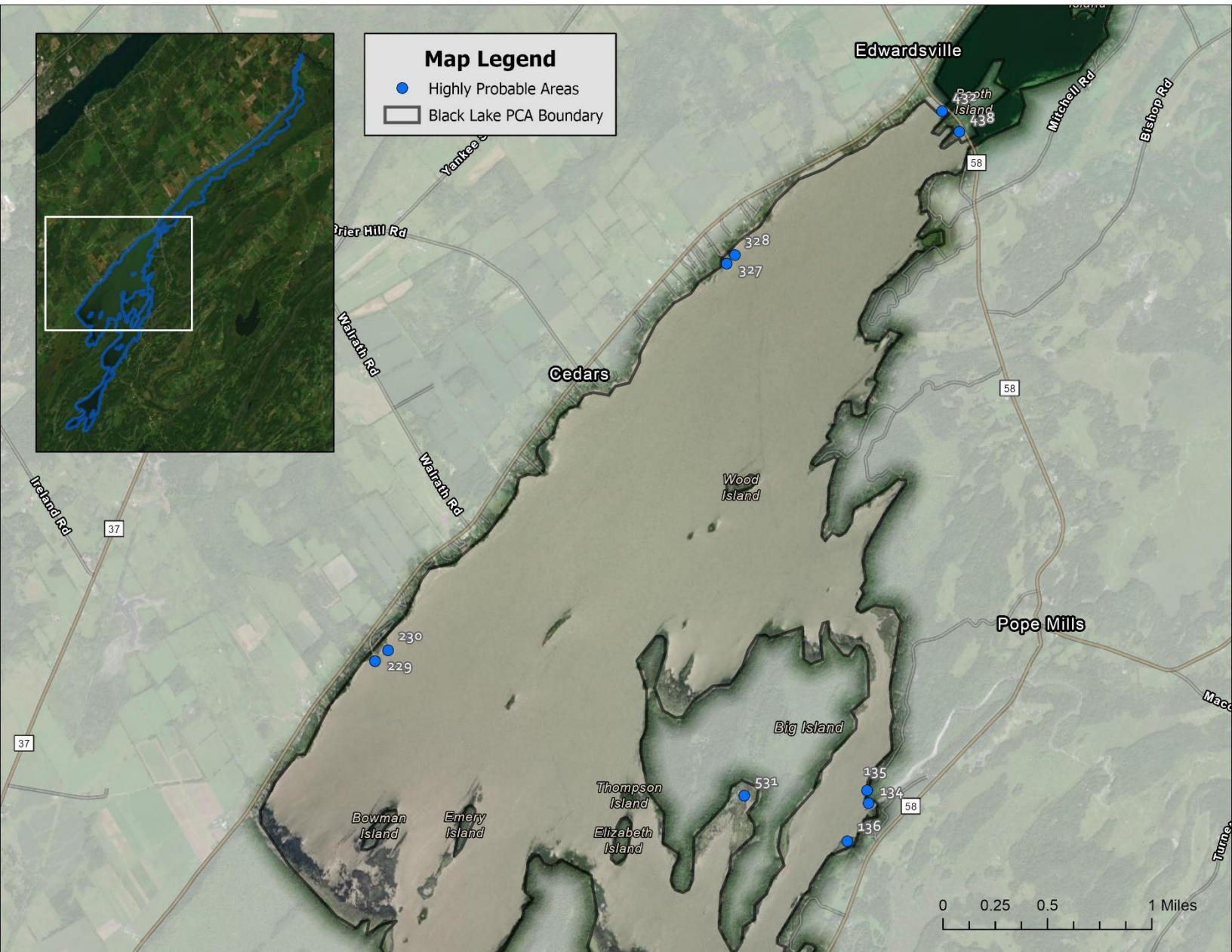


Figure 1. Map of Black Lake HPAs examined by SLELO staff in 2020.

## INVASIVE SPECIES DETECTED

Five aquatic invasive species were detected at Black Lake (Table 1). All invasive species mapped in 2020 were previously known to exist at this PCA. A summary of detections by HPA is provided in Table 2.

**Table 1.** Summary of invasive species detected at Black Lake.

Species	Tier Ranking	HPA's Affected
Curly-leaved pondweed	4	3
Eurasian water-milfoil	4	9
European frog-bit	4	2
Zebra mussel	4	4
Banded mystery snail	*	2

\* Species is not currently nominated

## NO NEW TIER 1 OR TIER 2 SPECIES WERE DETECTED

**Table 2.** Summary of aquatic invasives species detected at Black Lake by HPA.

HPA	Species Present	HPA	Species Present
134	Banded mystery snail	230	Eurasian water-milfoil
	Curly-leaved pondweed	327	Eurasian water-milfoil
	Eurasian water-milfoil		Zebra mussels
	European frog-bit	328	Eurasian water-milfoil
135	Eurasian water-milfoil	438	Curly-leaved pondweed
136	Banded mystery snail		Eurasian water-milfoil
	Eurasian water-milfoil	531	Curly-leaved pondweed
	European frog-bit		Eurasian water-milfoil
	Zebra mussels		Zebra mussels
229	Eurasian water-milfoil		
	Zebra mussels		

## MANAGEMENT SUMMARY

No management was performed at this PCA in 2020.

## NATIVE & NON-INVASIVE SPECIES DETECTED

SLELO staff identified 14 native or non-invasive species at Black Lake HPAs (Table 3). Eel grass was the most common species, observed at eight HPA's. Coontail and flat stem pondweed were the second most common, both found at six HPA's. Two native species, including one pondweed, could not be identified to species level and are excluded from the table below.

**Table 3.** Summary of native species detected at Black Lake.

Species	HPA's Affected
Algae	1
Benthic algae	1
Broadleaf pondweed	2
Common waterweed	4
Coontail	6
Eel grass	8
Elodea (species unknown)	2
Flat stem pondweed	6
Giant duckweed	2
Lesser duckweed	2
Native mussel	1
Robbin's pondweed	2
Star duckweed	5
White water lily	1



**Figure 2.** Images of sample analysis at Black Lake HPAs examined by SLELO staff in 2020.