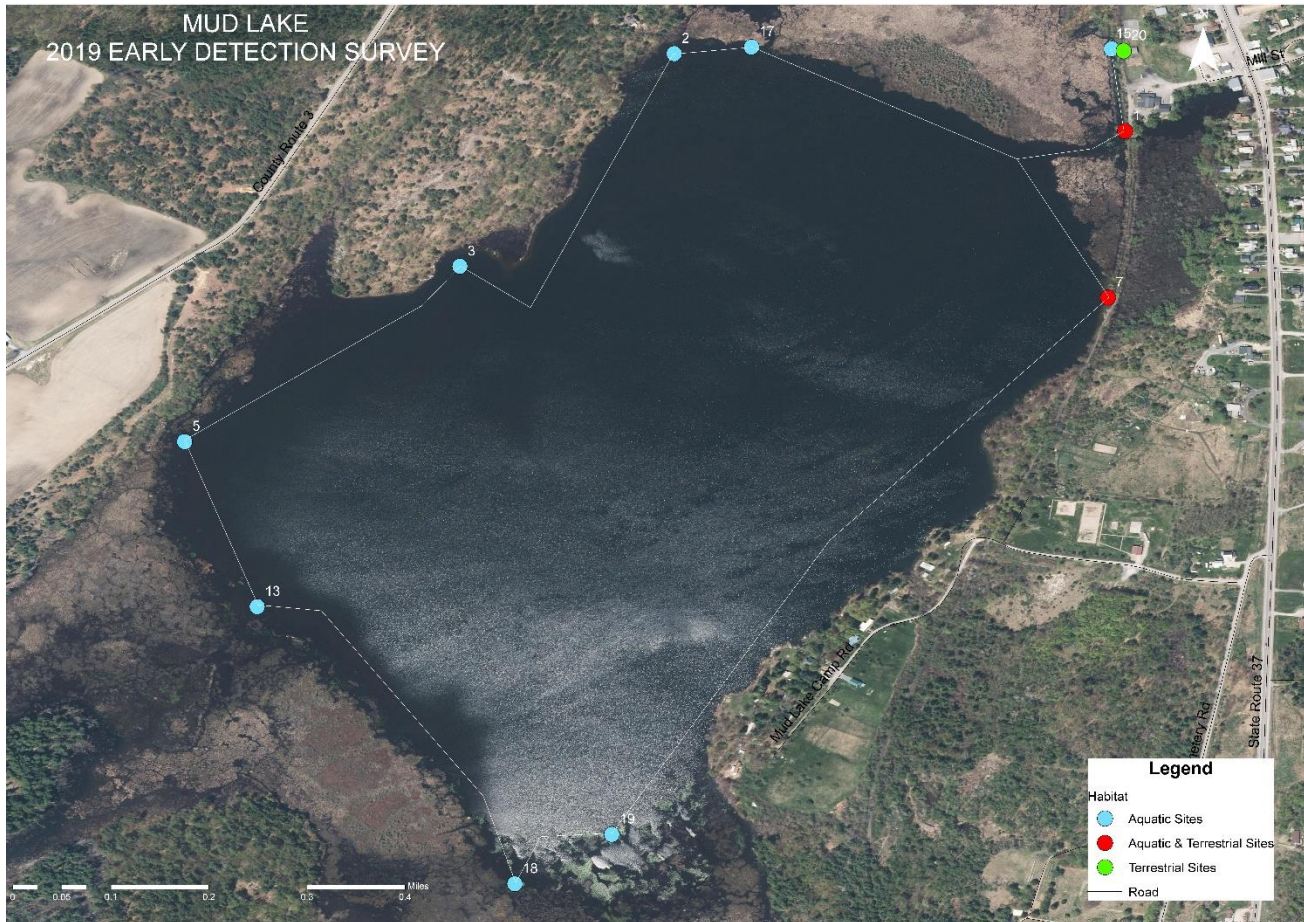


Mud Lake - Redwood, NY

SLELO-PRISM Early Detection Surveillance

Survey conducted October 11, 2019 - Report prepared on November 14, 2019

By Brittney Rogers, Robert Smith Aquatic and Terrestrial Restoration/Resiliency Coordinators



Survey Methods and Observations

Mud Lake (Redwood, NY) was surveyed in October 2019 by the SLELO staff, Robert Smith and Brittney Rogers (see map above). The survey involved examining highly probable areas (HPAs) for aquatic invasive species. Ten HPAs were resurveyed based on previous field surveys. To determine which aquatic species were present at the HPAs, the rake toss method was used. For this, a double-sided rake was tossed off both sides of the canoe to collect aquatic vegetation. The vegetation attached to the rake was identified and determined to be invasive or native. The location of each HPA was marked using a handheld Garmin GPS 60CSx.

The following ‘**Target Management Species**’ were found during the field survey (see table on page 2):

- Eurasian water milfoil (*Myriophyllum spicatum*)
- European frogbit (*Hydrocharis morsus-ranae*)

Eurasian water milfoil and European frogbit, which were found in the 2017 field survey, were found at HPA 1, 2, 3, 13, 15, 17 and 19 and HPA 1, 5, and 15 respectively. HPA 1, 7, and 20 were not resurveyed for invasive terrestrial species.

No Tier 1 Species were found.

St. Lawrence Eastern Lake Ontario Partnership for Regional Invasive Species Management

The Nature Conservancy — 269 Ouderkerk Road — Pulaski, NY 13142

HPA	Habitat Description	Latitude	Longitude	Invasive Species
1	Rooftop Boat Launch near Water Level Control Structure	44.29638	-75.80190	EWM, FB
2	Cove with Slow Moving Water	44.29752	-75.80855	EWM
3	Cove with Slow Moving Water	44.29439	-75.81171	EWM
5	Cove with Slow Moving Water	44.29181	-75.81577	FB
7	Beach near ATV Trail	44.29390	-75.80215	None
13	Duck Hunting Stand	44.28938	-75.81470	EWM
15	Cove with Stagnant Water	44.29759	-75.80210	EWM, FB
17	Duck Hunting Stand	44.29762	-75.80741	EWM
18	Cove with Slow Moving Water	44.28530	-75.81090	None
19	Cove with Slow Moving Water	44.28603	-75.80947	EWM
20	Town Park with ATV Trail	44.29756	-75.80192	N/A

Invasive Species Identified Key:

EW = Eurasian Water Milfoil, FB = European Frogbit

A native freshwater sponge (*Spongilla* spp.) was found at HPA 13, in 2017 in was found in HPA19. In addition, the following native plant species were found at the HPAs in Mud Lake: Robbins' pondweed (*Potamogeton robbinsii*), watershield (*Brasenia schreberi*), Canadian waterweed (*Elodea canadensis*), coontail (*Ceratophyllum demersum*), slender pondweed (*Potamogeton pusillus*), flat stem pondweed (*Potamogeton zosteriformis*), water celery (*Vallisneria americana*), broad-leaved pondweed (*Potamogeton amplifolius*), common bladderwort (*Utricularia macrorhiza*), and flat-leaved bladderwort (*Utricularia intermedia*). A species of native algae (*chara* spp.) was also found at HPA 5 and 18.