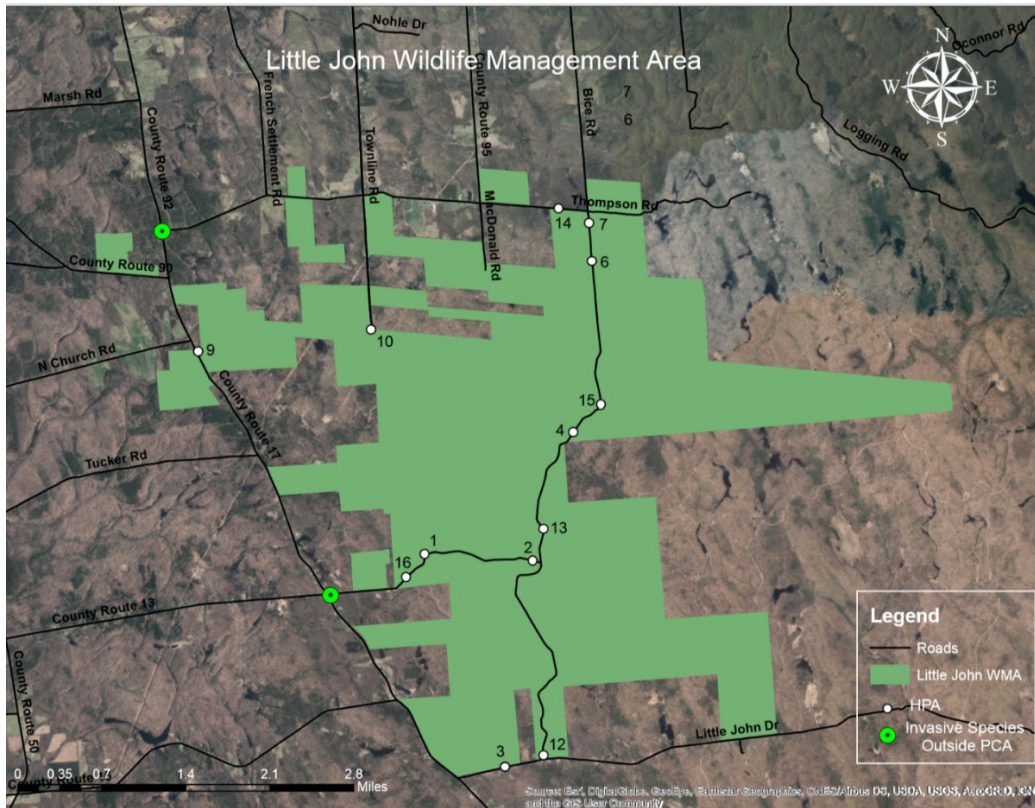


Little John Wildlife Management Area – August 29th 2019

SLELO-PRISM Early Detection Surveillance

Report prepared on August 30, 2019 by Robert Smith, Terrestrial Restoration and Resiliency Coordinator



Survey Methods and Observations

The Little John Wildlife Management Area was surveyed in August 2019 by the SLELO staff, Robert Smith and Brittney Rogers (see map above). The survey involved examining highly probable areas (HPAs) for terrestrial invasive species. The location of each HPA was marked using a handheld Garmin GPSmap 62. Twelve HPAs were resurveyed based on previous field surveys. Visual observations were used to find and identify invasive species in the HPAs.

The following ‘**Target Management Species**’ were found during the field survey (see table on page 2):

- Common buckthorn (*Rhamnus cathartica*),
- Glossy buckthorn (*Frangula alnus*),
- Japanese knotweed (*Fallopia japonica*), and
- Phragmites (*Phragmites australis*).

Common buckthorn and glossy buckthorn, which were found in the 2017 field survey, were found at HPA 4 and 7, and HPA 14 respectively. A small patch of phragmites and a mature glossy buckthorn shrub with adjacent sprouts were found at the new HPA 16. In addition, a small patch of Japanese knotweed was found at the intersection of county route 13 and 17, while a mature common buckthorn shrub was found along with many sprouts and a small patch of phragmites at the intersection of county route 17 and Thompson road. A firepit was found at HPA 13, indicating use of that parking area, while many of the HPAs showed little to no disturbance beyond routine mowing. A notable experience was the variety of warblers that were gathered at HPA 9 which, if a common occurrence, could prove to be an area of interest to many hikers

No new Prevention or Target Management Species were found during the 2019 field survey.

HPA	Habitat Description	Latitude	Longitude	Invasive Species
1	Logged Area	43.671044	-75.894987	CF
2	ATV Disturbance Site	43.670374	-75.877012	None
3	Parking Area	43.645502	-75.881262	WP
4	Parking Area	43.685904	-75.870473	CB
6	Parking Area/ Dumping Site	43.706438	-75.867692	WP
7	Trailhead	43.711041	-75.868225	CB
9	Trailhead	43.69507	-75.932989	CF
10	Car Turnaround/ Logged Area/ Snowmobile Trailhead	43.69792	-75.90428	WP
12	Trailhead	43.64694	-75.87484	None
13	Parking	43.67422	-75.87527	CF
14	Parking	43.71275	-75.87328	CF
15	Dumping Site	43.68922	-75.86590	PL
16	Roadside	43.66823	-75.89802	CF, GB, PH

Invasive Species Identified Key:

CB = Common Buckthorn, CF = Coltsfoot, GB = Glossy Buckthorn, JK = Japanese Knotweed,
PH = Phragmites, PL = Purple Loosestrife, WP = Wild Parsnip