



Department of
Environmental
Conservation



Protecting Regional Water Resources From Invasive Species Impacts

Emily Sheridan; Eastern Great Lakes Watershed Coordinator- NYSDEC/NHT Great Lakes Program
SLELO PRISM Symposium
June 23rd, 2021

Program Mission

“To protect, restore, conserve and enhance the chemical, physical and biological integrity of the waters and associated natural resources within the Great Lakes basin for sustainable use and enjoyment by the people of New York”.



Department of
Environmental
Conservation

NY's Great Lakes Action Agenda GOALS



- ***Clean Up Pollution Sources and Restore Beneficial Uses***



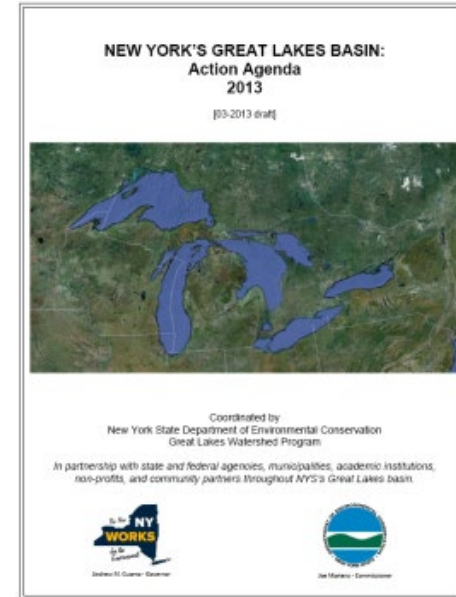
- ***Conserve Natural Resources***

4. Combat Invasive Species
5. Conserve and Restore Native Fish and Wildlife Biodiversity and Habitats

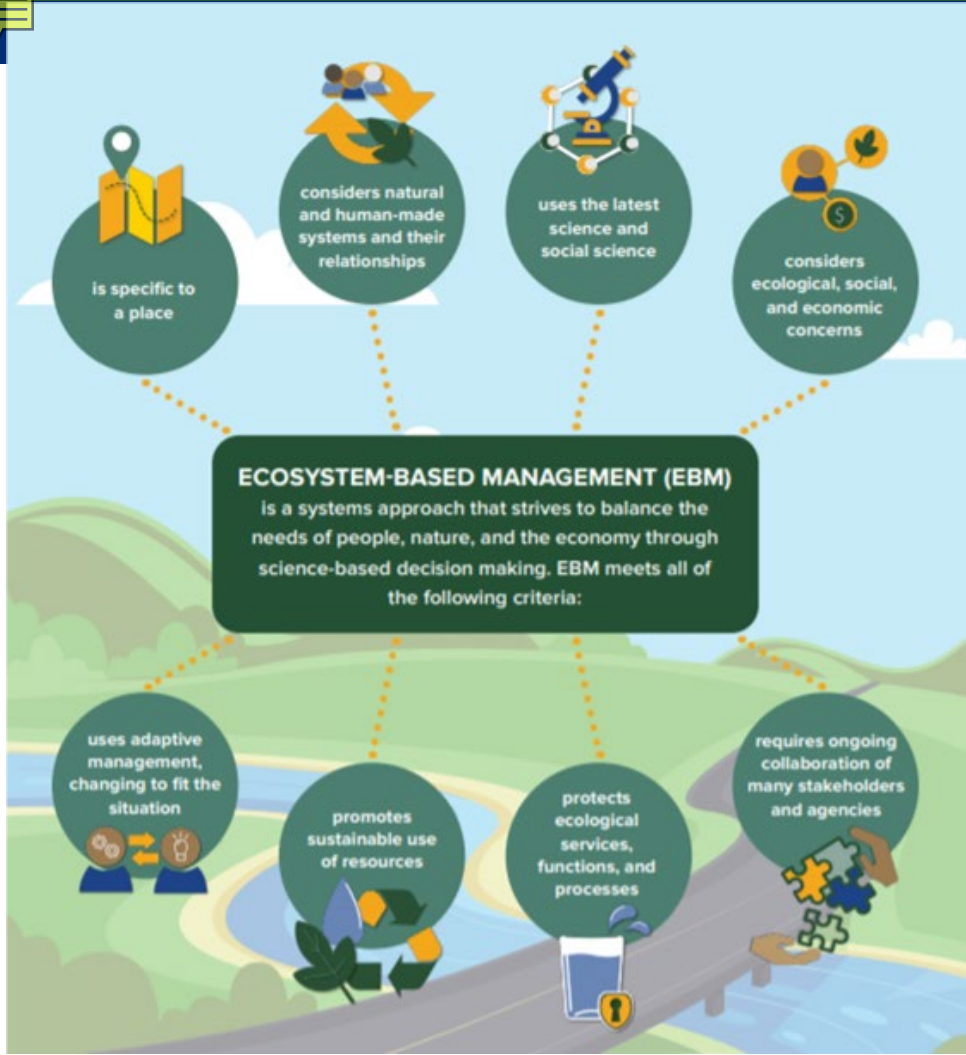


- ***Promote Resilient Communities & Sustainable Development***

Cross-cutting Priorities: Partnerships; Coordinated Science, k-12 environmental education and public outreach; and climate change adaptation



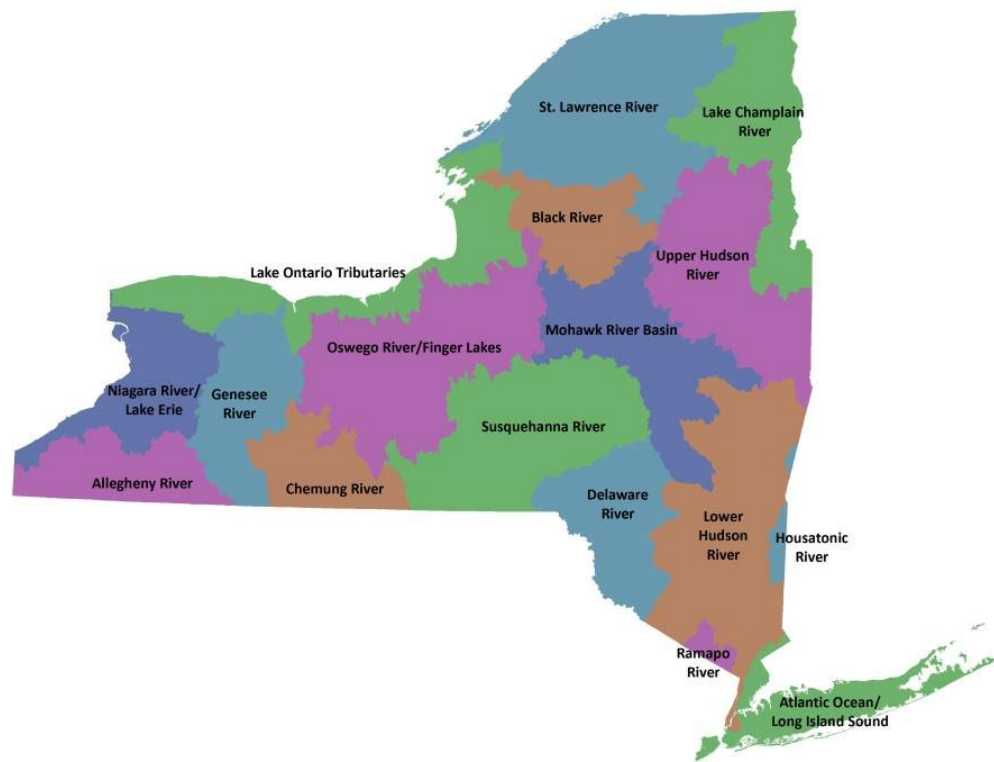
Department of
Environmental
Conservation



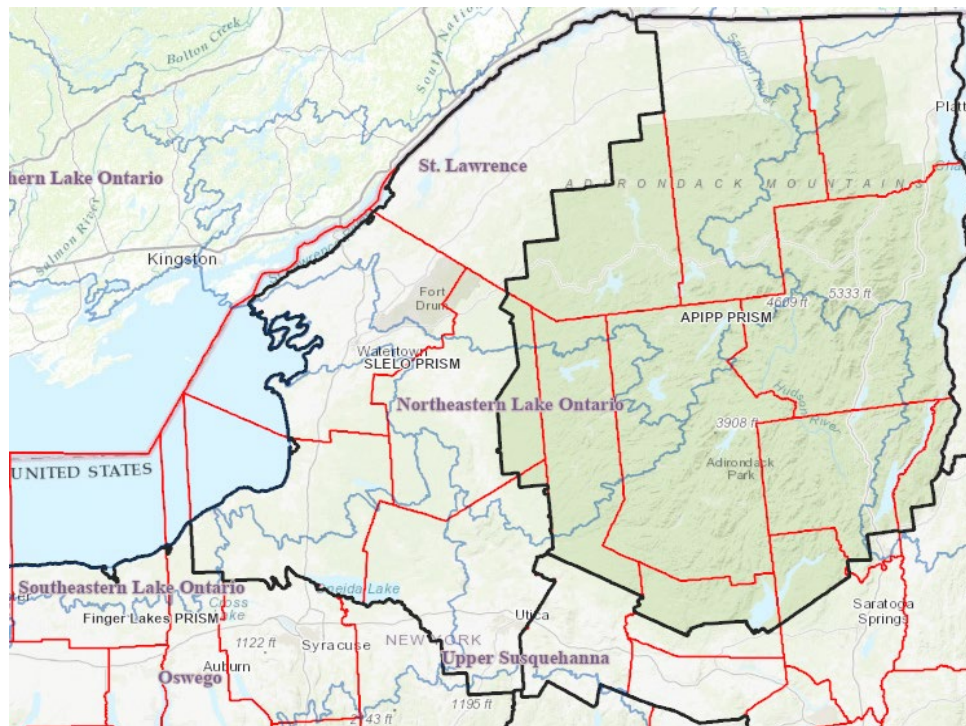
Ecosystem-based Management (EBM)

Watersheds of NYS

- Drainage areas based on topography
- 17 major watersheds, or drainage basins
- USGS Hydrologic Unit Code 6



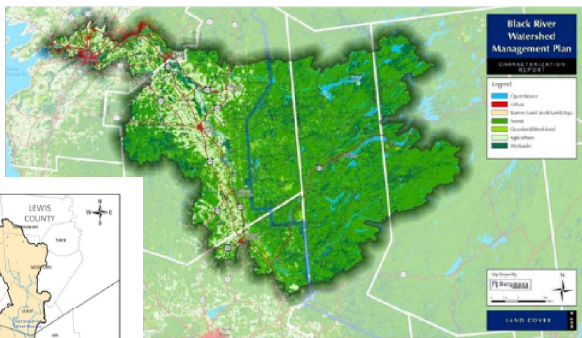
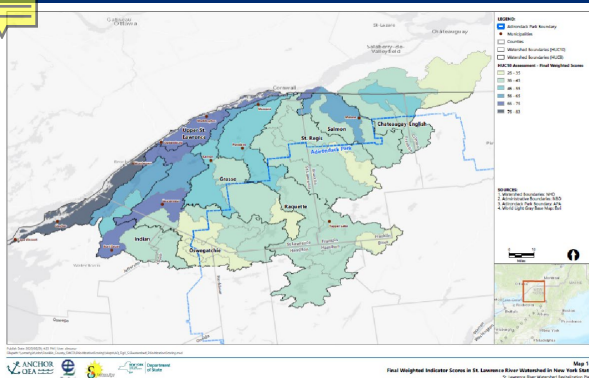
Watersheds of SLELO



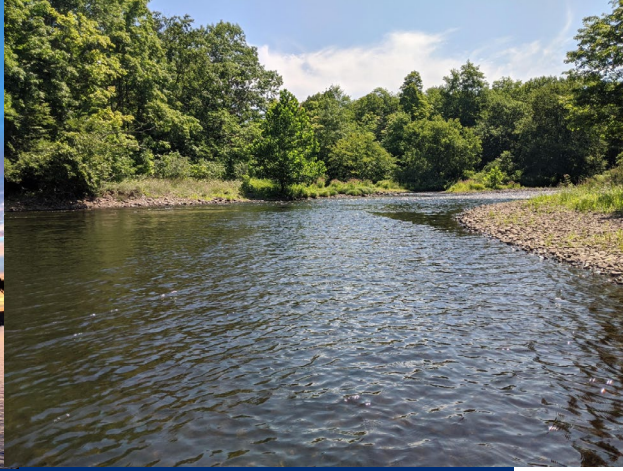
- St. Lawrence, Black River, Salmon-Sandy Creeks, Seneca-Oswego, Mohawk-Hudson, and Upper Susquehanna



Watershed Management Plans in the region



- St. Lawrence River Watershed Revitalization Plan (2020)
- Black River Watershed Management Plan (2010)
- Oneida Lake Watershed Management Strategy (2004)



What are these Regional waterways?

- A.** Hudson River, Mohawk River, Lake Champlain
- B.** St. Lawrence River, Salmon River, Lake Ontario
- C.** Black River, Sandy Creek, Oneida Lake



Department of
Environmental
Conservation

Water Resources and their uses

- Drinking Water (A)
- Contact Recreation (B)
- Aquatic Life (C)
- Trout (T)



DECInfocator:

<https://www.dec.ny.gov/pubs/109457.html>



Department of
Environmental
Conservation



Invasive Species Threaten Water Resources

- Clog Water Intakes
- Impact boating
- Threaten riparian areas
- Degrade aquatic fish and wildlife habitats



Protecting our Water Resources

- Prevent
- Monitor
- Control
- Plant Native
- Educate Others

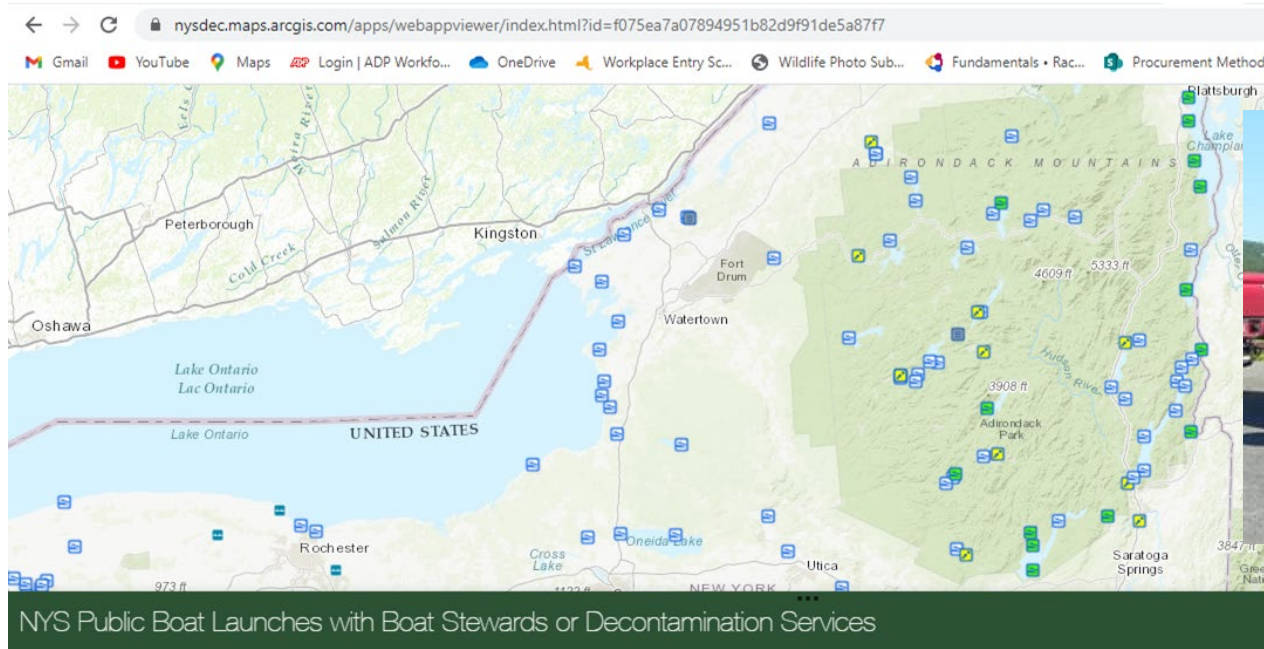
Protect Your Waters 

Help Stop the Spread of Aquatic Invasive Species and Fish Diseases
Follow these simple guidelines to properly clean boats and fishing equipment.

1		INSPECT your boat, trailer and other fishing and boating equipment and remove all plant and animal material clinging to it.
2		DRAIN AND DRY everything that came into contact with water. Dry equipment for at least 5 days before using it in another water body. Be sure to completely drain your boat, including bilge wells and livewells.
3		DISINFECT the boat's bilge area, all water-holding compartments, and other equipment with hot water at least 140°F or steam for at least 30 seconds before launching into another water body. IF YOU CAN'T DRY OR DISINFECT YOUR BOAT, thoroughly flush all water-holding compartments with water before launching. Don't let rinse water run into a water body.

<https://www.dec.ny.gov/animals/265.html>

Prevent Boat launch stewardship and decontamination



<https://www.dec.ny.gov/animals/48221.html>

Monitor

Welcome to

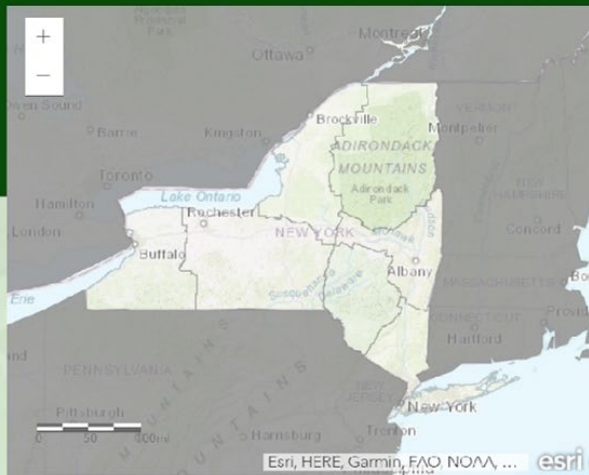
NY iMapInvasives

NY iMapInvasives is an online, collaborative, GIS-based database and mapping tool that serves as the official invasive species database for New York State. [Learn more about iMap.](#)

Create account

View public map

Featured species:



Confirmed **Tree-of-heaven** Locations in iMapInvasives

Observation Record
Make new reports of invasive species and edit existing records here!

Take Photo

Select Species

Select Detected or Not Detected

Uncheck to manually enter location

Zoom In or Out

Take Photo Using Camera

Select Photo From Library

Species: ☒ Custom List

None selected

Species Detected

Species Not Detected

Date: 04/29/2019

☒ GPS (uncheck to manually move location)

Road

To manually edit location, uncheck the GPS box, touch and hold the map, push pin. Drag it.

Enable your custom species list

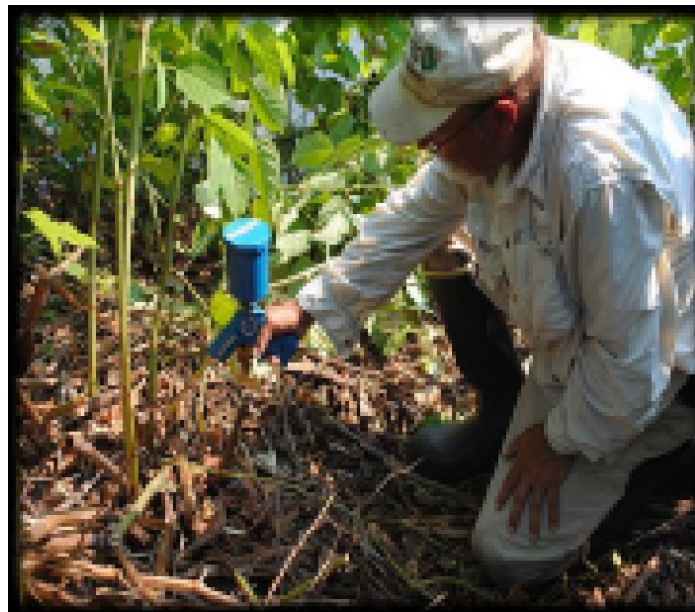
Select Date



Department of
Environmental
Conservation

Control

- Learn about best management practices for controlling invasives at www.nyis.info
- Funding opportunities for control are available from state and federal programs.



Stem injections with herbicide are a BMP for controlling Japanese knotweed. Photo from SLELO PRISM. Credit The Nature Conservancy

Plant native

- Recent guidance for Working with Nature along NY's Great Shorelines developed.
- Cornell Master Gardeners and other experts with SLELO PRISM are available to help.



Front cover of working with Nature guide and example of native plants along Lake Ontario shoreline. Credit: Roy Widrig, NY Sea Grant



Department of
Environmental
Conservation

Educate Others

- NY's Great Lakes Ecosystem Education Exchange
- Invasive Species: K-12 Educator Resources



<https://www.dec.ny.gov/education/116542.htm>

Thank You

- Emily Sheridan
- Eastern Great Lakes Watershed Coordinator
- Watertown, NY
- Emily.Sheridan@dec.ny.gov
- (315) 785-2382



Connect with us:

Facebook:

www.facebook.com/NYSDEC

Twitter: twitter.com/NYSDEC

Flickr: www.flickr.com/photos/nysdec



Department of
Environmental
Conservation