

St. Lawrence Eastern Lake Ontario Partnership for Regional Invasive Species Management

SLELO-PRISM Hemlock Woolly Adelgid Survey

Winter 2021 Field Survey conducted by Robert Smith and Brittney Rogers



Survey Methods and Observations

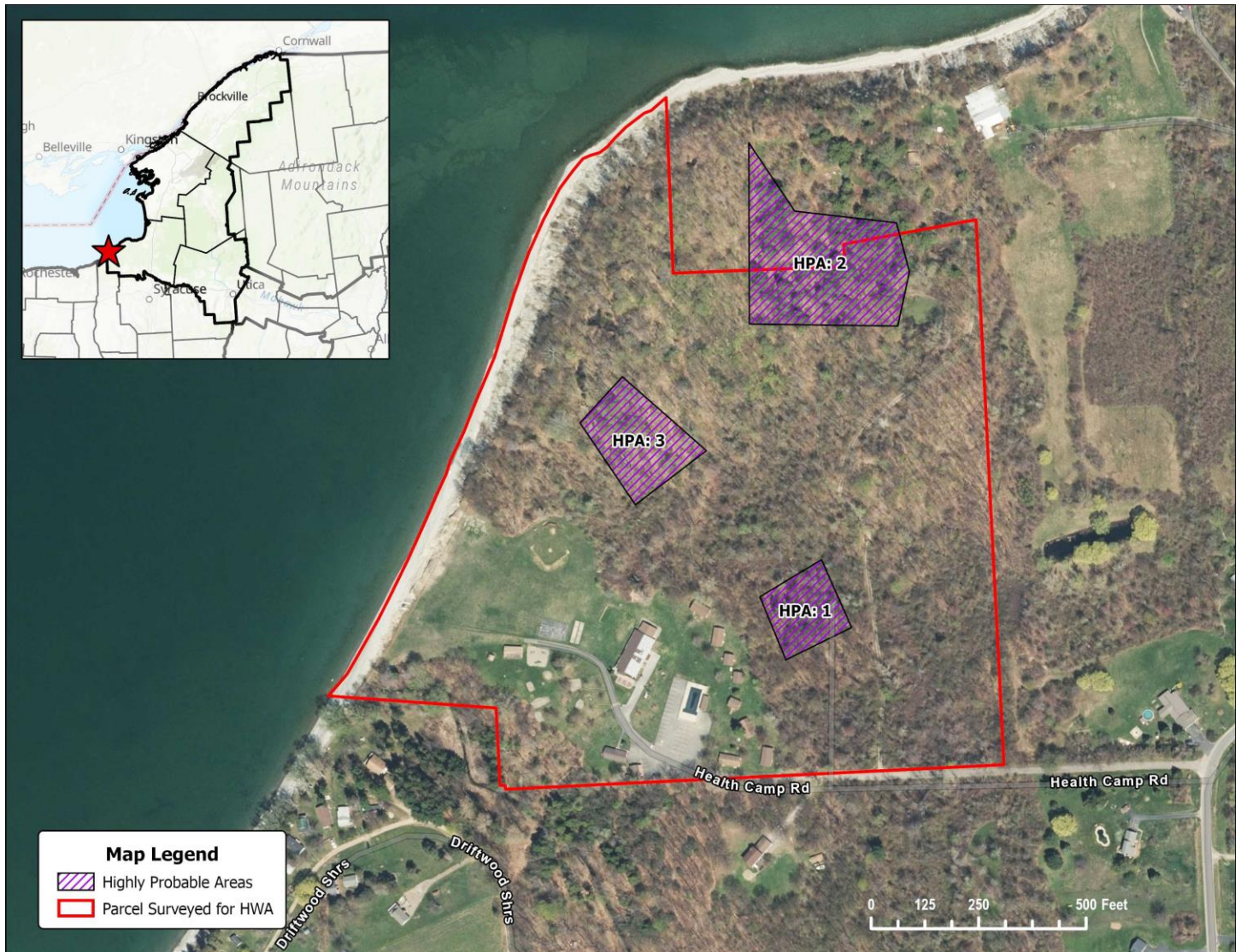
The Hemlock Woolly Adelgid (HWA) survey of the SLELO-PRISM region was conducted from January 2021 to April 2021. Several Highly Probable Areas (HPAs) within the 13 Priority Conservation Areas (PCAs) were surveyed by Brittney Rogers, Robert Smith, Megan Pistolese, and Frank Williams for signs and symptoms of Hemlock Woolly Adelgid (HWA).

The following tables of the PCAs include the location of each HPA, average HWA density, % of trees infested, crown density, and whether hemlock needleminer (*Coleotechnites* spp.) or tip blight (*Sirococcus tsugae*) was found on these trees. The tables indicate that HWA was found at three of these sites (Independence Park, Camp Hollis, and Oswego County Reforestation Area). Landowners/managers have no obligation to treat this insect, but we encourage treatment for two reasons; 1) to protect the land managers investments by supporting tree stand health, integrity and resiliency to other forest pests and pathogens and 2) to reduce the rate of spread of HWA into other parts of our region. All data was recorded using iMap3 Forest Pest Data Collection Tool.

Of the 30 HPAs searched, Hemlock Woolly Adelgid was detected at 3 HPAs.

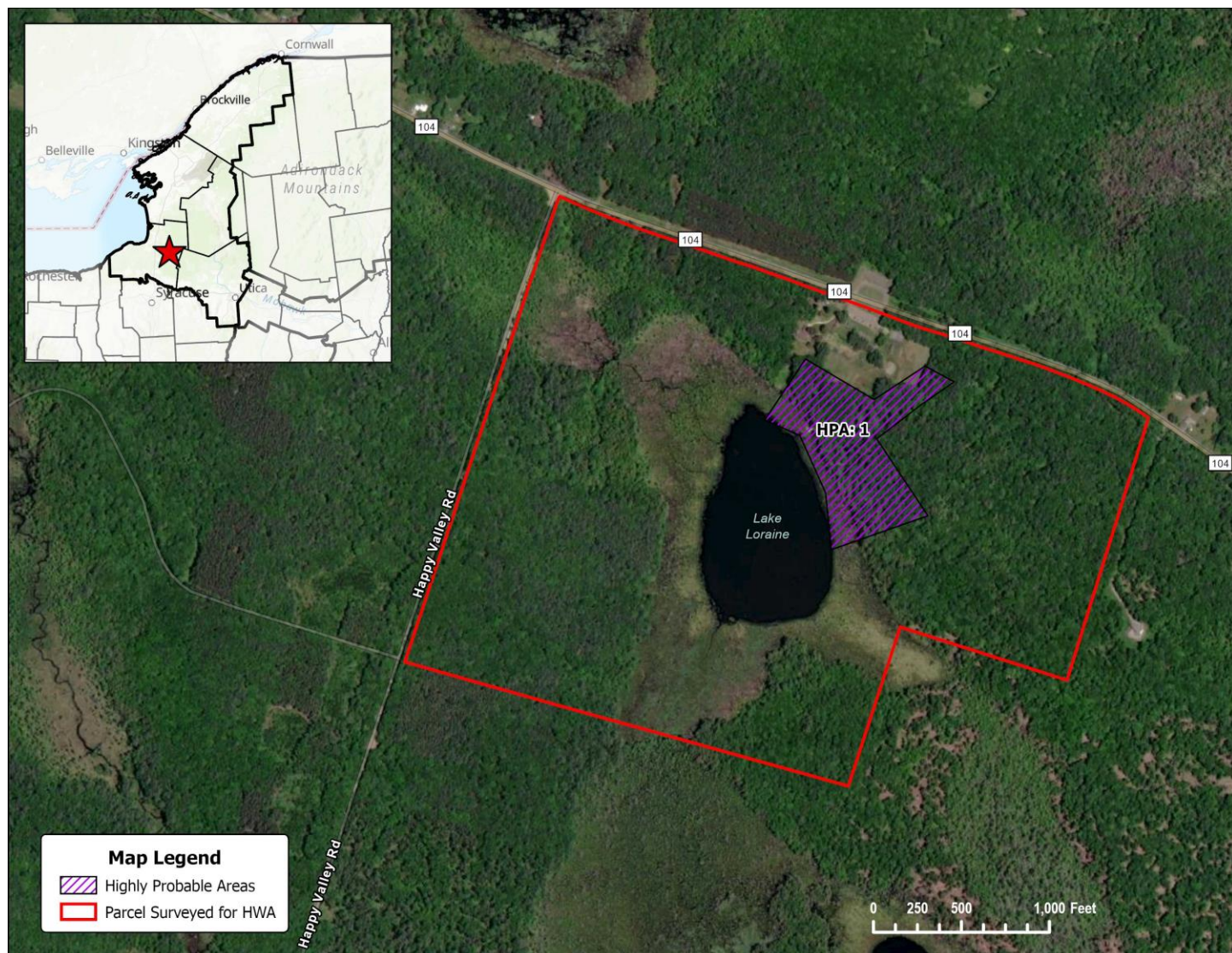
1. PCA-Camp Hollis

HPA	Description	Latitude	Longitude	Avg HWA Density	% of Trees Infested	Crown Density	Needleminer	Tip Blight
1	Camp Hollis	43.42745	-76.59307	No HWA Detected	0%	81-100%	Yes	No
2	Camp Hollis	43.42967	-76.59300	Over 20 Ovisacs/Twig	81-100%	81-100%	No	No
3	Camp Hollis	43.42851	-76.59455	No HWA Detected	0%	81-100%	Yes	No



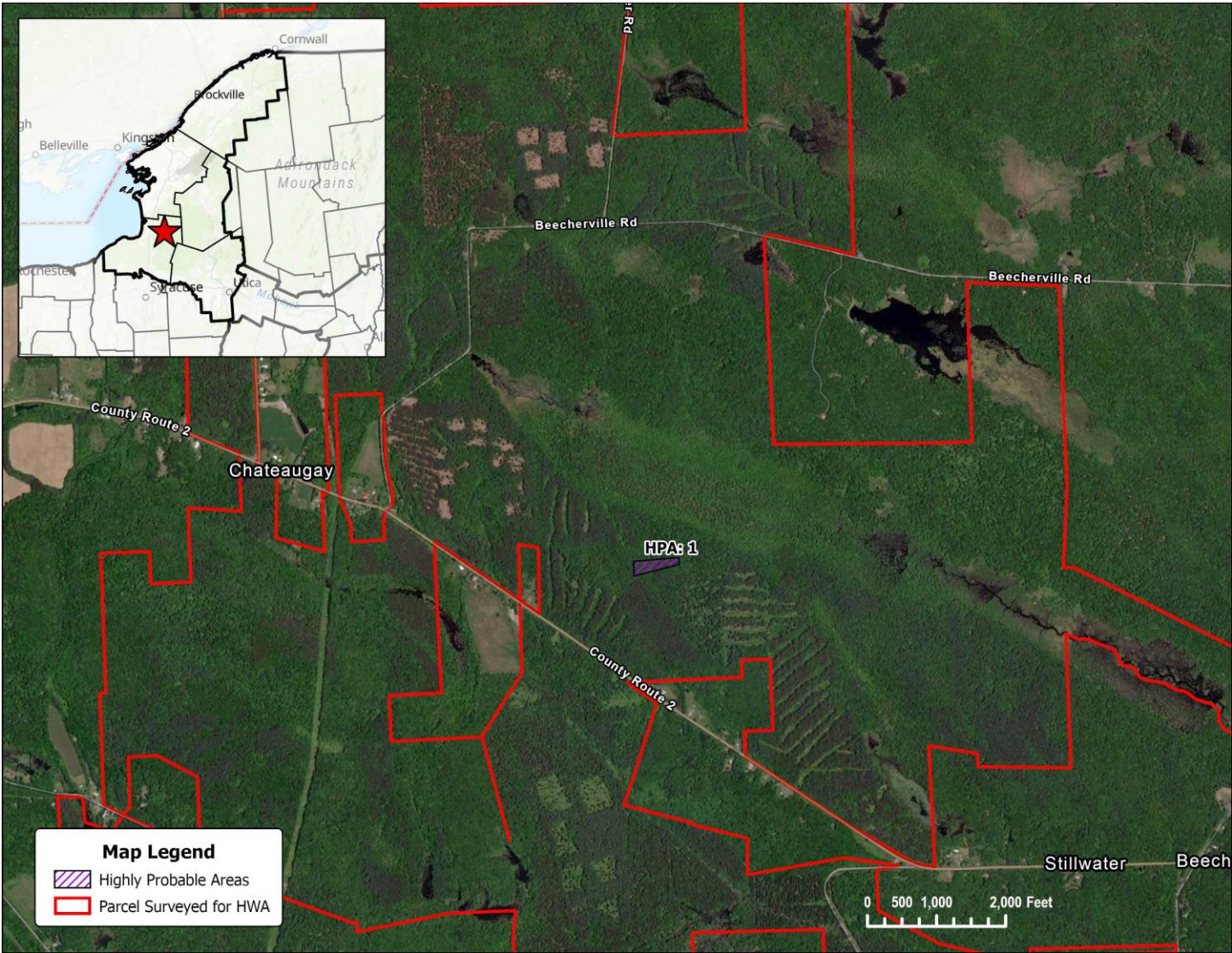
2. PCA-Camp Zerbe

HPA	Description	Latitude	Longitude	Avg HWA Density	% of Trees Infested	Crown Density	Needleminer	Tip Blight
1	Camp Zerbe	43.45851	-75.95864	No HWA Detected	0%	81-100%	Yes	Yes



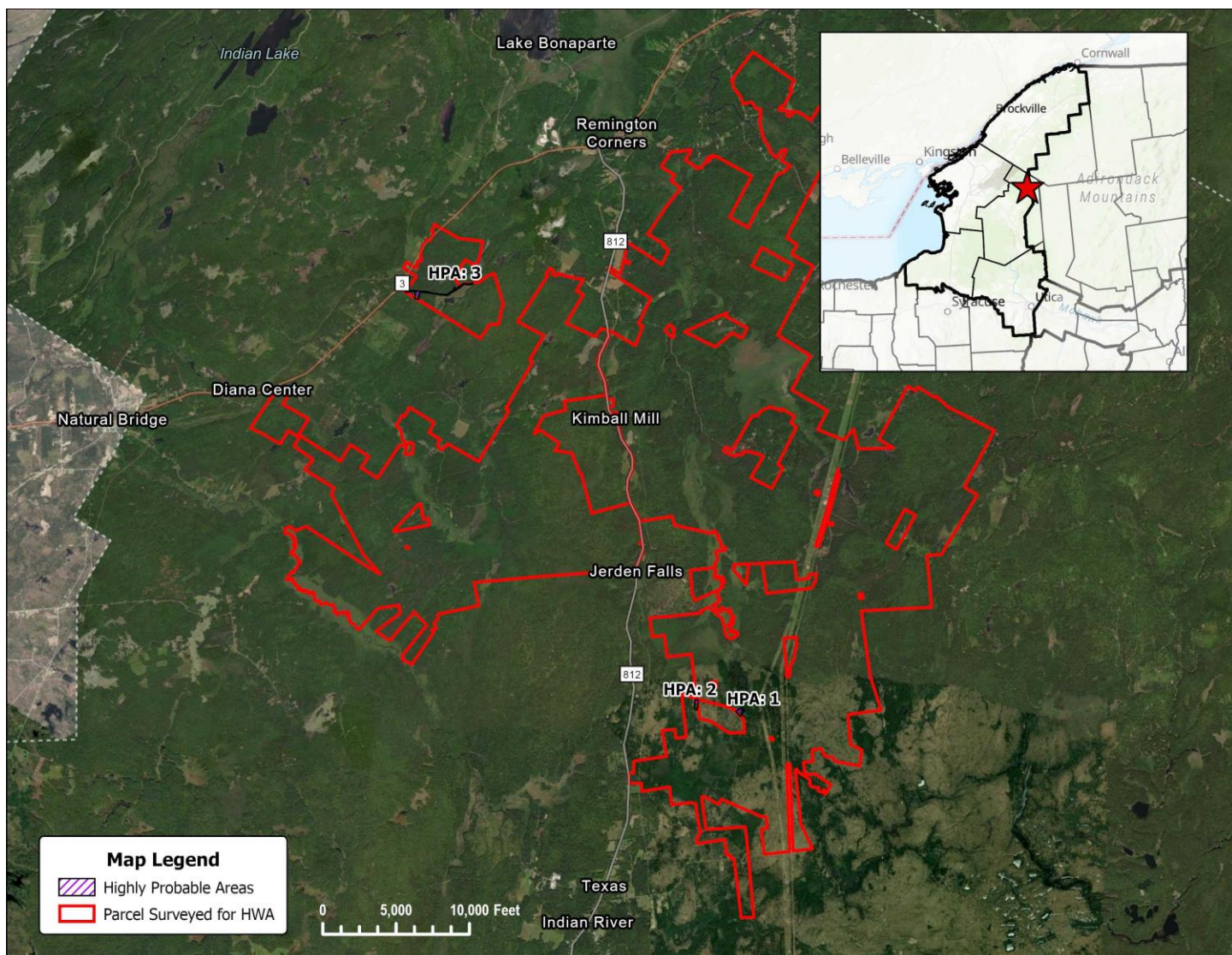
3. PCA-Chateaugay Wildlife Management Area

HPA	Description	Latitude	Longitude	Avg HWA Density	% of Trees Infested	Crown Density	Needleminer	Tip Blight
1	Chateaugay WMA	43.57216	-75.94723	No HWA Detected	0%	81-100%	Yes	Yes



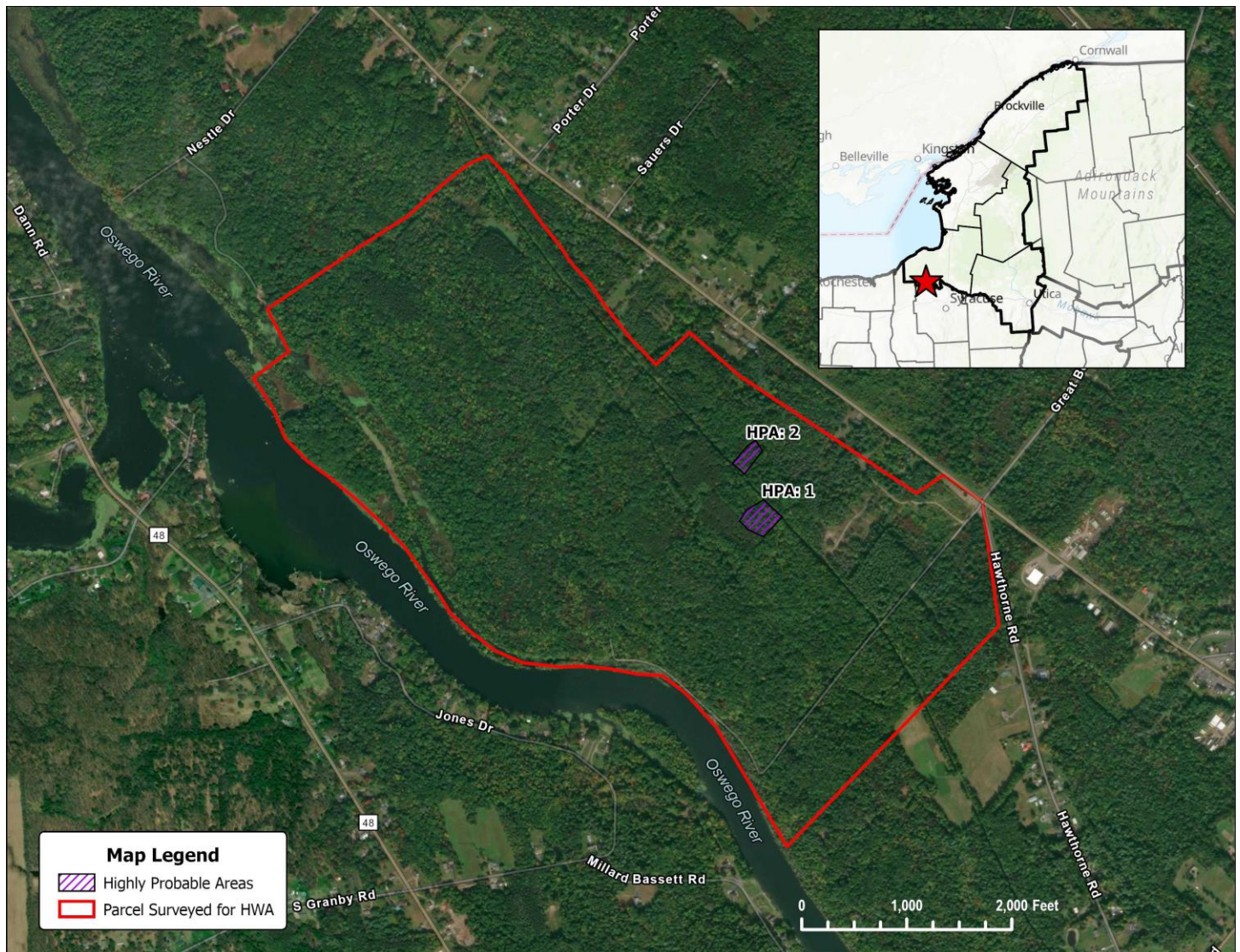
4. PCA-Frank Jadwin/Hogsback State Forest

HPA	Description	Latitude	Longitude	Avg HWA Density	% of Trees Infested	Crown Density	Needleminer	Tip Blight
1	Frank Jadwin/Hogsback State Forest	44.01539	-75.32991	No HWA Detected	0%	81-100%	Yes	No
2	Frank Jadwin/Hogsback State Forest	44.01671	-75.34131	No HWA Detected	0%	81-100%	Yes	No
3	Frank Jadwin/Hogsback State Forest	44.09375	-75.40972	No HWA Detected	0%	81-100%	No	No



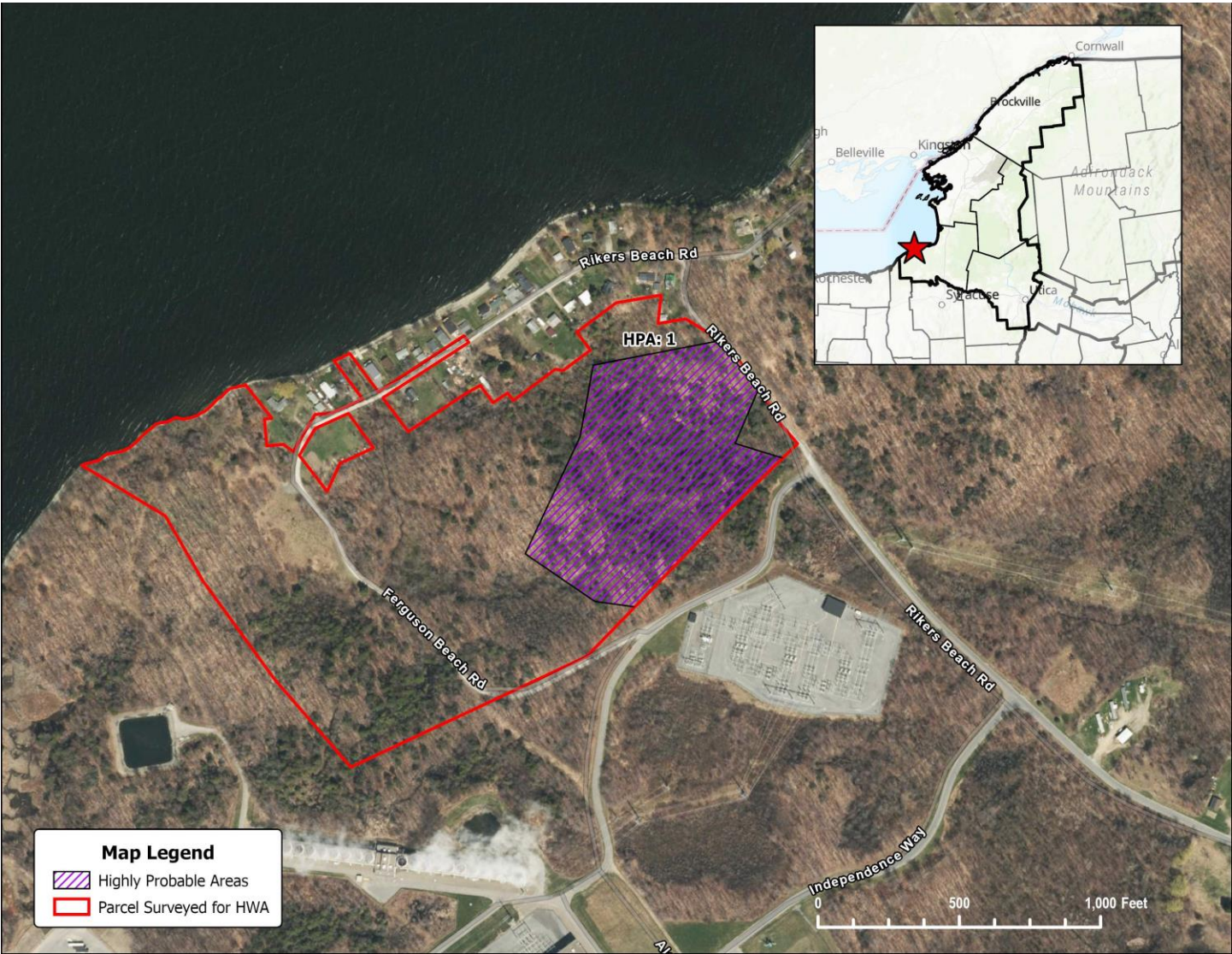
5. PCA-Great Bear Recreation Area

HPA	Description	Latitude	Longitude	Avg HWA Density	% of Trees Infested	Crown Density	Needleminer	Tip Blight
1	Great Bear Recreation Area	43.26541	-76.35954	No HWA Detected	0%	81-100%	Yes	No
2	Great Bear Recreation Area	43.26701	-76.36003	No HWA Detected	0%	81-100%	No	No



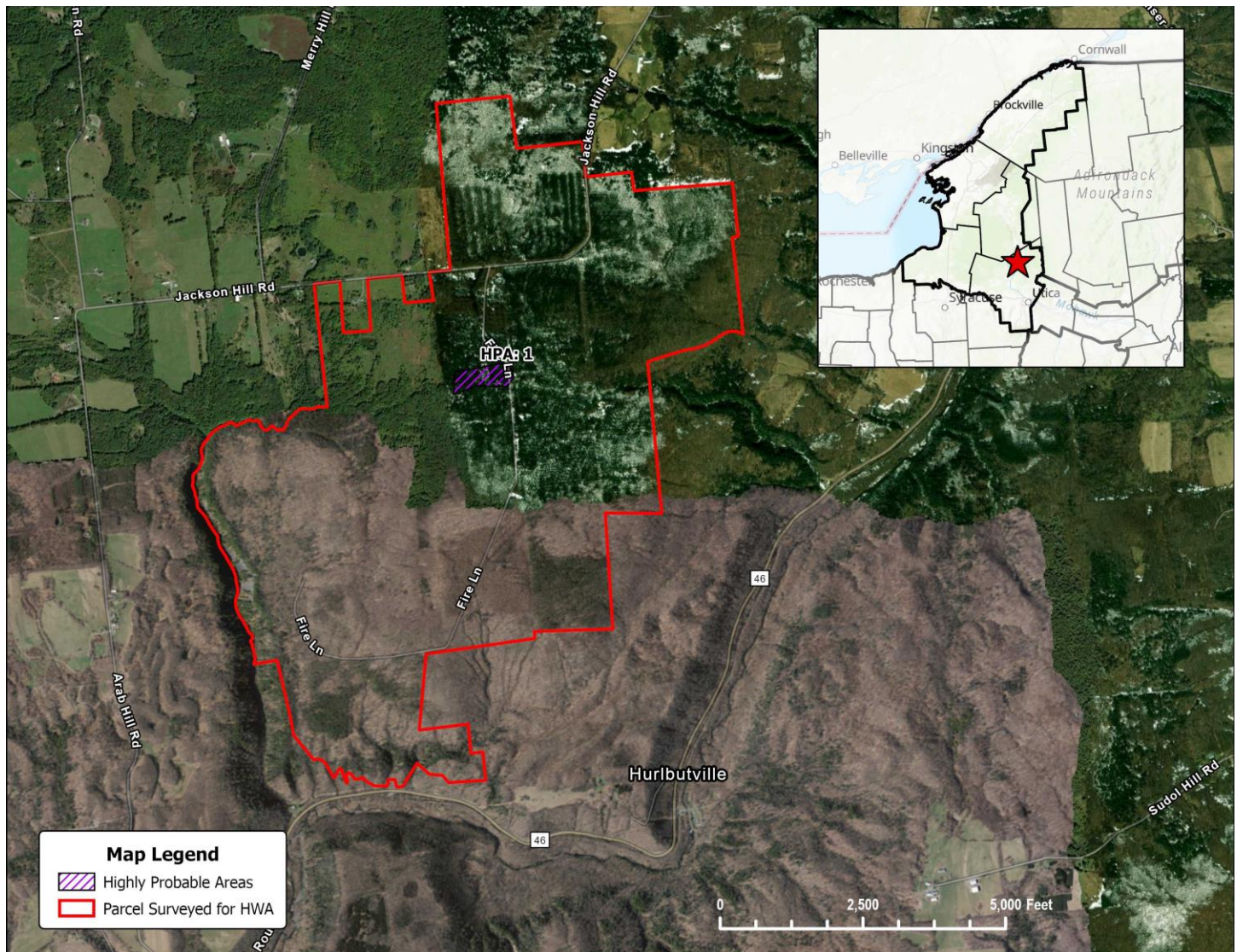
6. PCA-Independence Park

HPA	Description	Latitude	Longitude	Avg HWA Density	% of Trees Infested	Crown Density	Needleminer	Tip Blight
1	Independence park	43.50068	-76.44899	Over 20 Ovisacs/Twig	41-60%	81-100%	Yes	No



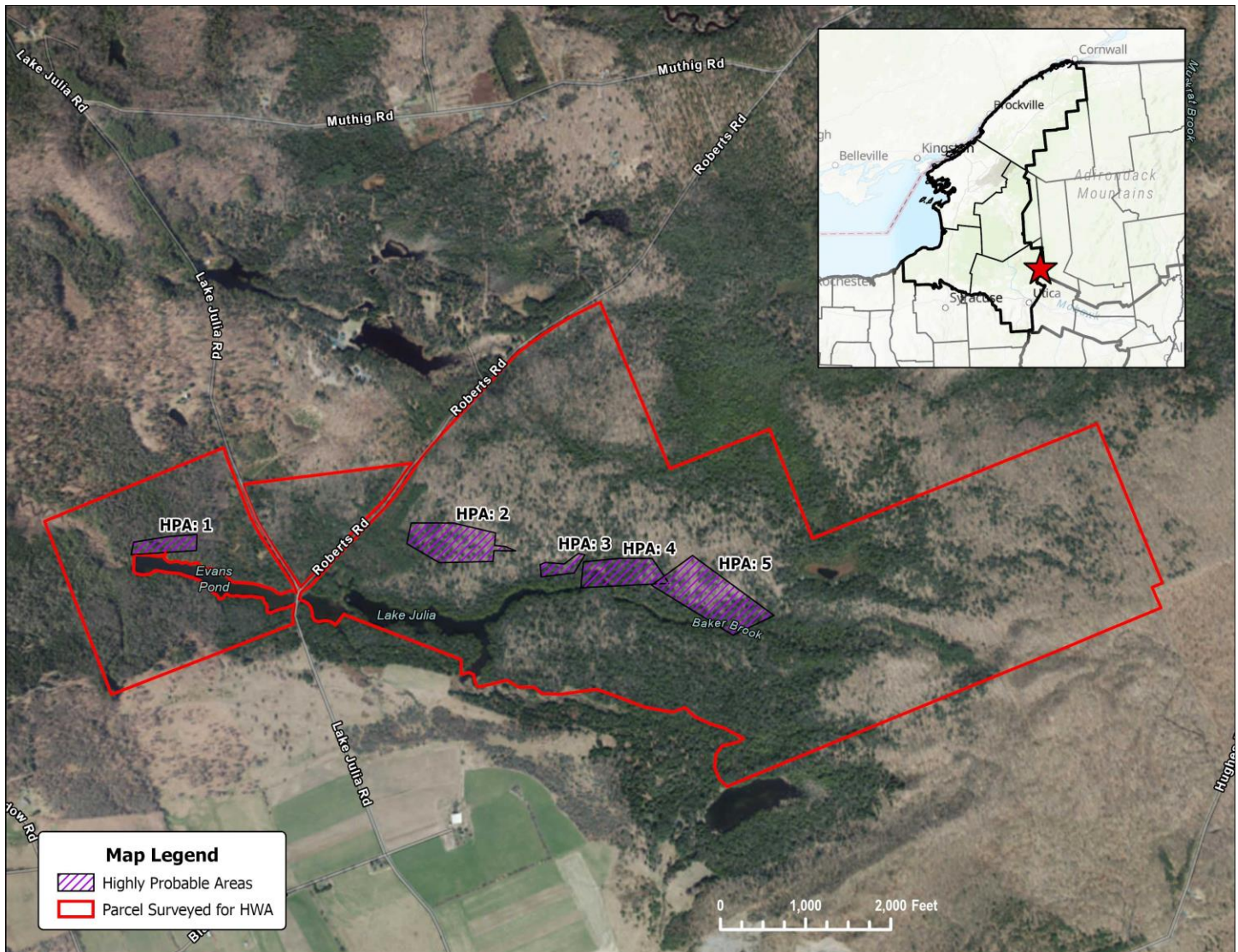
7. PCA-Jackson Hill State Forest

HPA	Description	Latitude	Longitude	Avg HWA Density	% of Trees Infested	Crown Density	Needleminer	Tip Blight
1	Jackson Hill State Forest	43.42410	-75.35770	No HWA Detected	0%	81-100%	Yes	Yes



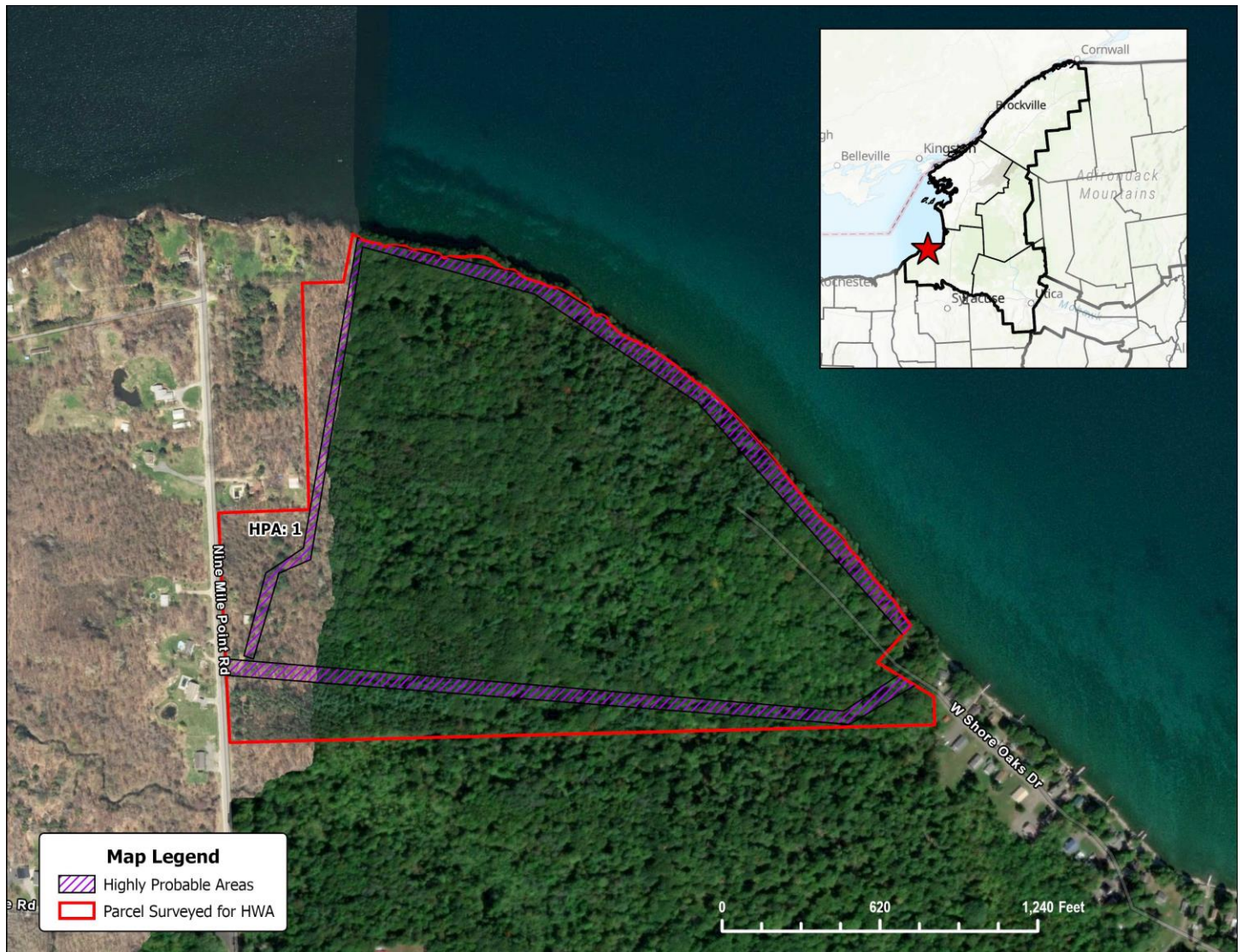
8. PCA-Lake Julia Preserve

HPA	Description	Latitude	Longitude	Avg HWA Density	% of Trees Infested	Crown Density	Needleminer	Tip Blight
1	Lake Julia Preserve	43.37204	-75.14398	No HWA Detected	0%	81-100%	Yes	Yes
2	Lake Julia Preserve	43.37213	-75.13127	No HWA Detected	0%	81-100%	Yes	No
3	Lake Julia Preserve	43.37135	-75.12651	No HWA Detected	0%	81-100%	Yes	Yes
4	Lake Julia Preserve	43.37116	-75.12386	No HWA Detected	0%	61-80%	Yes	Yes
5	Lake Julia Preserve	43.37040	-75.11986	No HWA Detected	0%	81-100%	Yes	Yes



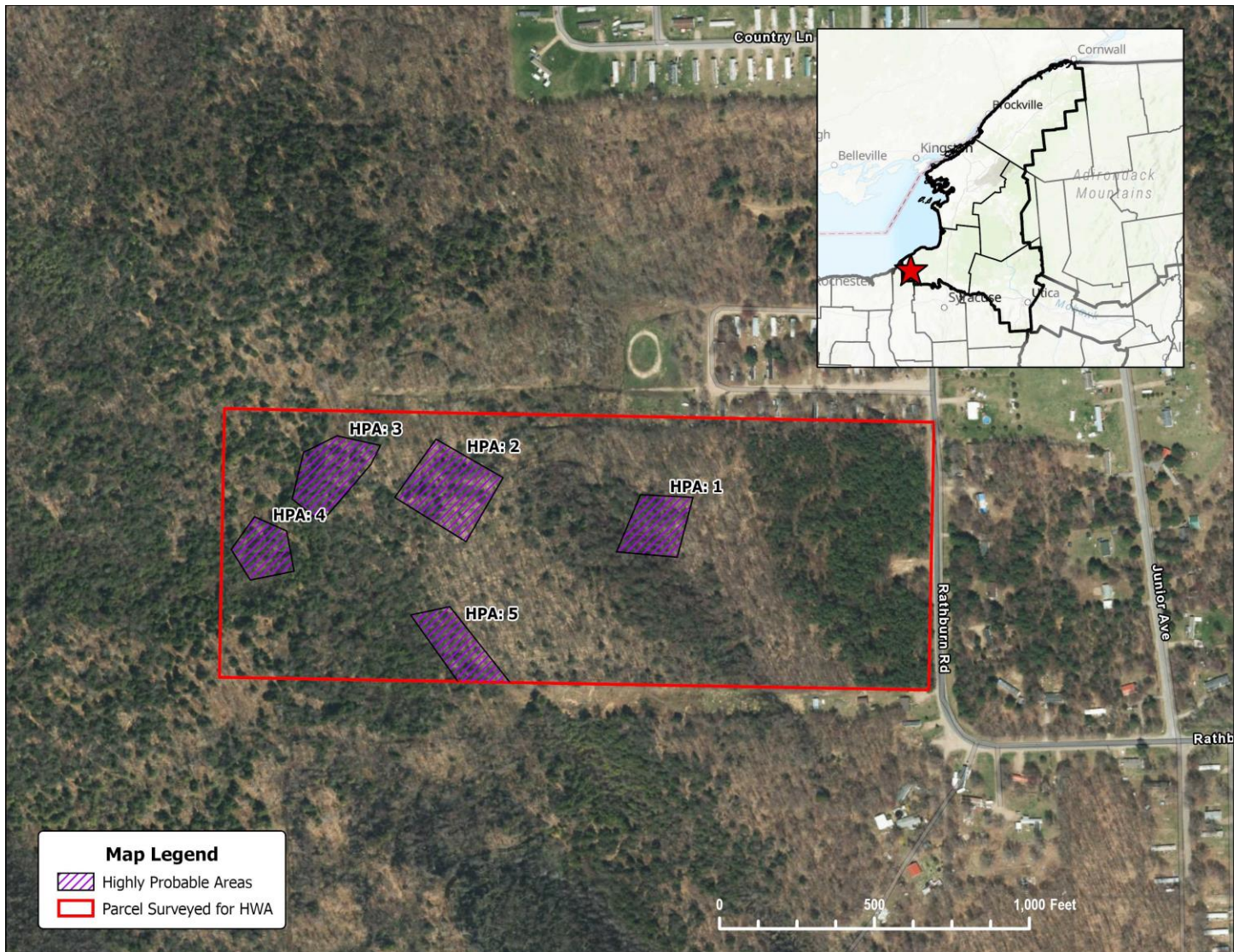
9. PCA-Noyes Bird Sanctuary

HPA	Description	Latitude	Longitude	Avg HWA Density	% of Trees Infested	Crown Density	Needleminer	Tip Blight
1	Noyes Bird Sanctuary	43.52228	-76.36506	No HWA Detected	0%	81-100%	No	No



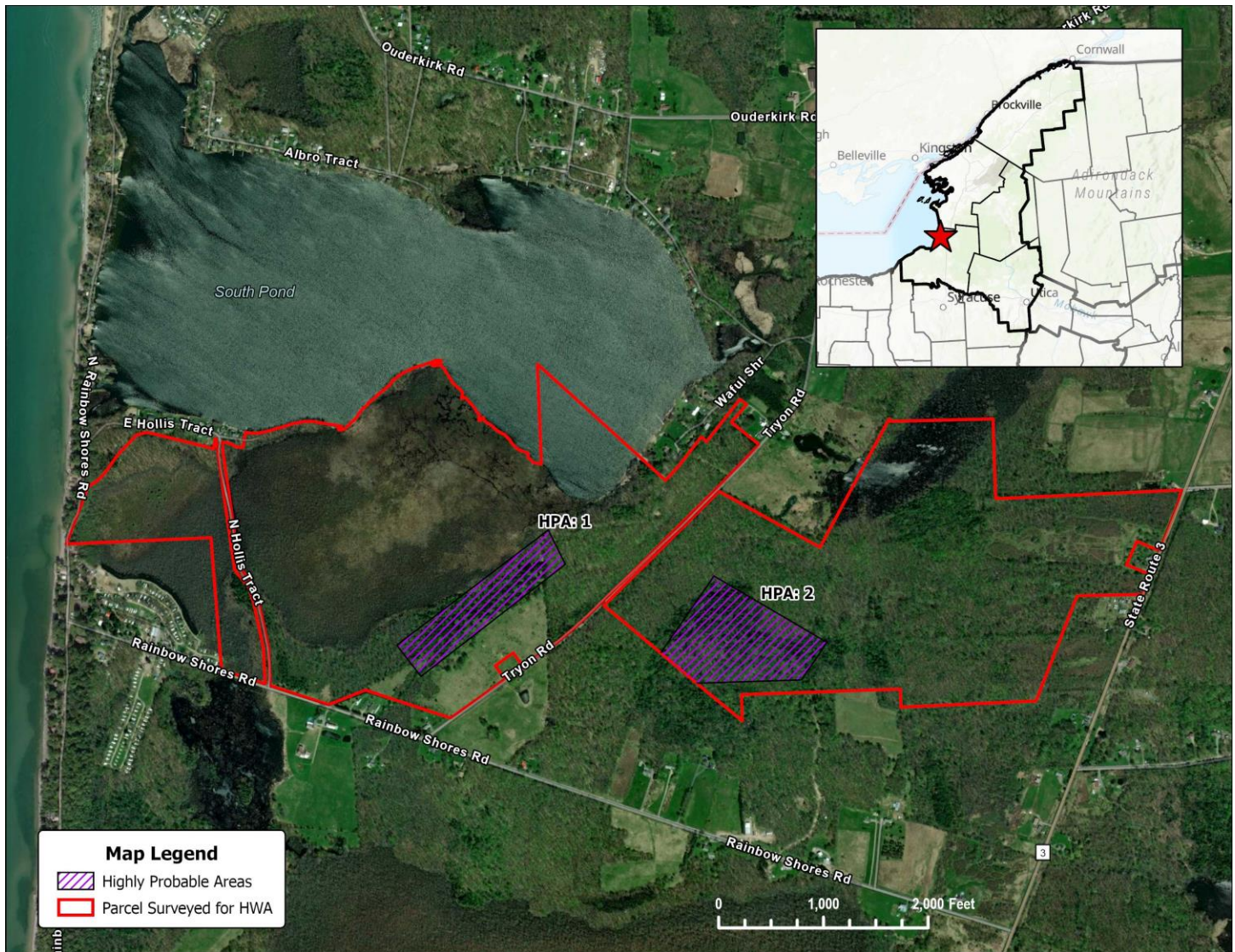
10. PCA-Oswego County Reforestation Area

HPA	Description	Latitude	Longitude	Avg HWA Density	% of Trees Infested	Crown Density	Needleminer	Tip Blight
1	Oswego County Reforestation Area	43.34459	-76.51314	No HWA Detected	0%	81-100%	Yes	No
2	Oswego County Reforestation Area	43.34488	-76.51566	No HWA Detected	0%	81-100%	Yes	No
3	Oswego County Reforestation Area	43.34500	-76.51710	No HWA Detected	0%	81-100%	Yes	No
4	Oswego County Reforestation Area	43.34431	-76.51791	5 or less Ovisacs/Twig	1-20%	81-100%	Yes	No
5	Oswego County Reforestation Area	43.34342	-76.51546	No HWA Detected	0%	81-100%	Yes	No



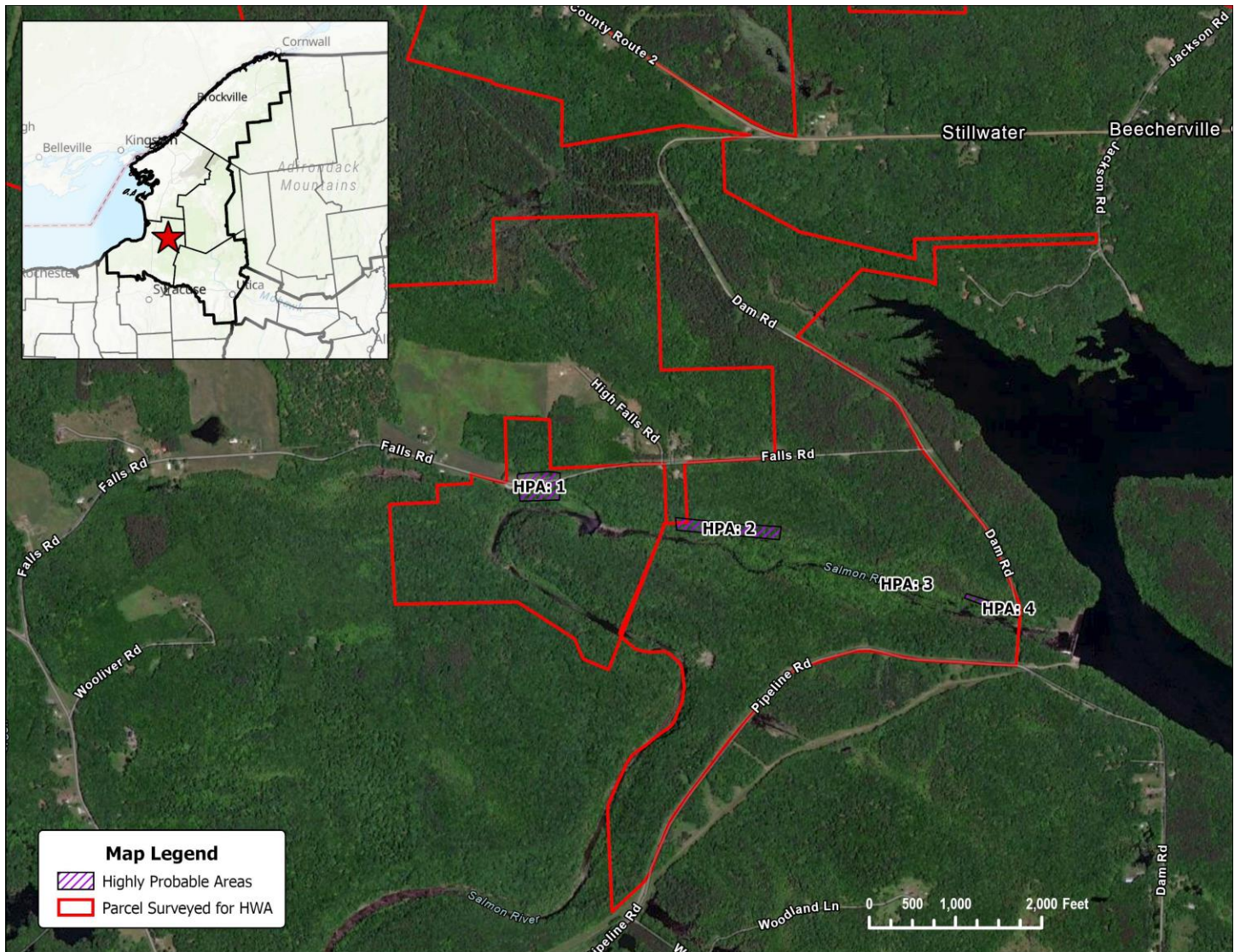
11. PCA-Rainbow Shores Preserve

HPA	Description	Latitude	Longitude	Avg HWA Density	% of Trees Infested	Crown Density	Needleminer	Tip Blight
1	Rainbow Shores Preserve	43.61466	-76.18263	No HWA Detected	0%	81-100%	Yes	No
2	Rainbow Shores Preserve	43.54781	-75.93444	No HWA Detected	0%	41-60%	Yes	No



12. PCA-Salmon River Falls

HPA	Description	Latitude	Longitude	Avg HWA Density	% of Trees Infested	Crown Density	Needleminer	Tip Blight
1	Salmon River Falls Trail	43.54909	-75.94274	No HWA Detected	0%	81-100%	Yes	Yes
2	Salmon River Falls Trail	43.54781	-75.93444	No HWA Detected	0%	81-100%	Yes	Yes
3	Salmon River Falls Trail	43.54612	-75.92652	No HWA Detected	0%	81-100%	Yes	Yes
4	Salmon River Falls Trail	43.54547	-75.92280	No HWA Detected	0%	81-100%	Yes	Yes



13. PCA-Three Mile Bay Wildlife Management Area

HPA	Description	Latitude	Longitude	Avg HWA Density	% of Trees Infested	Crown Density	Needleminer	Tip Blight
1	Three Mile Bay WMA	43.26785	-76.08921	No HWA Detected	0%	81-100%	No	No

