

Tug Hill Invasive Species Prevention Zone

*Home to a wide variety of **Native Species!***



The Tug Hill ISPZ is home to a diverse mix of native species, including (l to r): Pink Lady Slipper (*Cypripedium acaule*), Luna Moth (*Actias luna*), and Spotted Salamander (*Ambystoma maculatum*).

What is an **Invasive Species Prevention Zone**, or ISPZ?

A **formal designation** given to a natural area that is dominated by native species of plants and animals and is known to support exceptional biodiversity concentrations. An ISPZ may include areas where two or more kinds of habitat converge, like a wetland, grassland, or forest.

Where is the Tug Hill ISPZ?

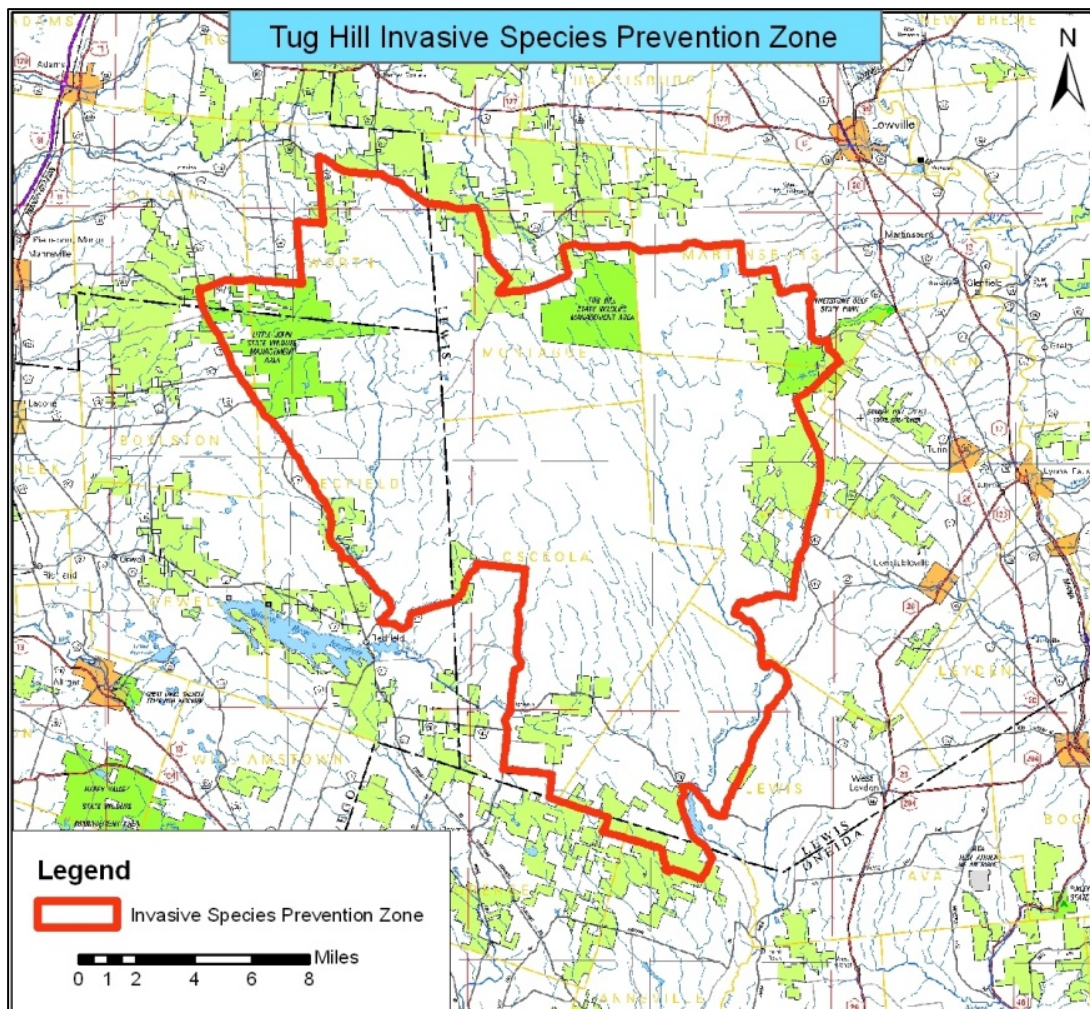
The Tug Hill Invasive Species Prevention Zone is located northeast of Redfield, NY on the Tug Hill Plateau. This **biologically diverse area** covers portions of Jefferson, Lewis, Oneida, and Oswego counties. A variety of habitats, including mixed forestlands, wetlands, and farmlands, are present and provide a home for native plant and animal species. Contained within the ISPZ, are wildlife management areas, a preserve owned by The Nature Conservancy, and state forest lands (see map on reverse).

The ISPZ Management Plan

A **site-specific management plan** will be created and implemented for the Tug Hill ISPZ. The plan will include strategies to:

- Identify, monitor, and prevent invasive species pathways
- Encourage growth of desired native species
- Provide education on invasive species
- Establish early detection surveillance
- Provide rapid response control efforts for invasive species

This plan is **not regulatory**, but serves to enhance the natural environment by creating conditions suitable for native species while preventing the spread of invasive species.



Above: Map showing boundary of Tug Hill ISPZ, including portions of Jefferson, Lewis, Oneida, and Oswego counties. Below, right: American Beaver (*Castor canadensis*) and Barred Owl (*Strix varia*) are common in the Tug Hill ISPZ.

SLELO-PRISM

The St. Lawrence – Eastern Lake Ontario Partnership for Regional Invasive Species Management (SLELO PRISM) was formed in 2005 to combat the spread of invasive species. Our overall mission is to protect the natural and cultural integrity of aquatic and terrestrial areas in Jefferson, Oswego, Oneida, St. Lawrence, and Lewis counties from invasive species. Formally recognized by the state in 2011, our PRISM has made tremendous progress towards the prevention of new species and the management of existing species within the PRISM.



For more information, visit www.sleloinvasives.org and www.tughill.org.



Credits: Moccasin-flower/Pink Lady Slipper (*Cypripedium acaule*). Photo by William M. Ciesla, Forest Health Management International, Bugwood.org; Luna Moth (*Actias luna*). Photo by Wildlife Gallery, National Park Service, nps.org.; Spotted Salamander (*Ambystoma maculatum*). Photo by Rob Routledge, Sault College, Bugwood.org.; "Tug Hill Invasive Species Prevention Zone" Map by Lorna Wright, The Nature Conservancy; American Beaver (*Castor canadensis*). Photo by Alfred Viola, Northeastern University, Bugwood.org.; Barred Owl (*Strix varia*). Photo by Ricky Layson, Ricky Layson Photography, Bugwood.org.