

Keep A Lookout!

Save The River®



Upper St. Lawrence RIVERKEEPER®

Aquatic Invasive Animals in the St. Lawrence River and Eastern Lake Ontario

These species may be spreading in your area. Early Detection and Management can help prevent invasions and reduce the harmful impacts of these species. Maps show current reported distribution of species in NNY and surrounding regions.



Not Present in Region



Present in SLELO Region

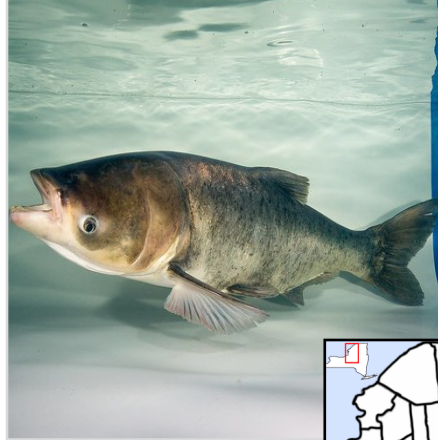
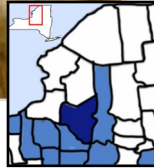


Present in Surrounding Region

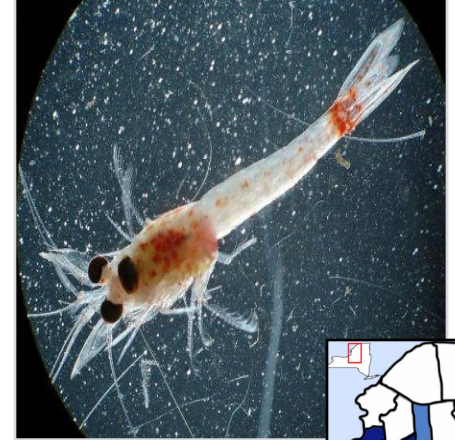
*Updated December 2019



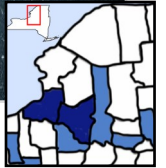
ASIAN CLAM



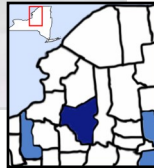
BIGHEAD CARP



BLOODY RED SHRIMP



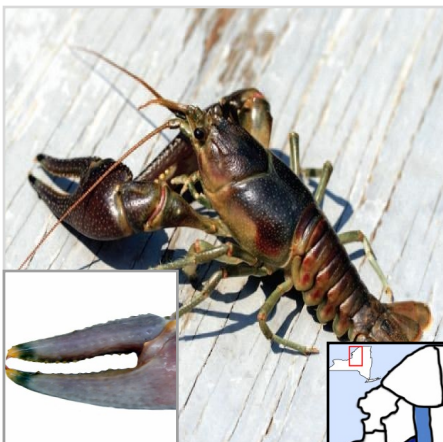
GRASS CARP



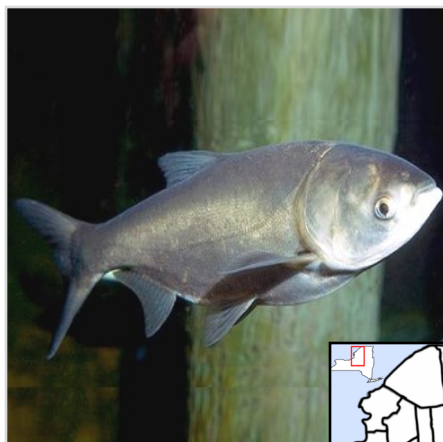
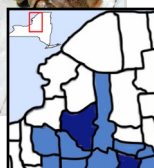
NEW ZEALAND MUD SNAIL



NORTHERN SNAKEHEAD



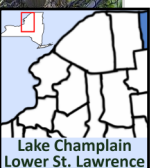
RUSTY CRAYFISH



SILVER CARP



TENCH



To report a sighting, please login to www.nyimapunvasives.org



iMapInvasives
Sharing information
for strategic management

Aquatic Invasive Animal Priorities in Northern New York

ASIAN CLAM (*Corbicula fluminea*)

Oval triangular clam with dorsal “beak” at the peak of the shell. Outer shell is olive, yellow, or brown in color with thick distinctive growth rings. Adults grow up to one to two inches wide. Inner shell is white to blueish-white. Resembles native fingernail clams. Threatens freshwater ecosystems by outcompeting native mussel species, altering benthic habitat, and biofouling power and water treatment plants.

BIGHEAD CARP (*Hypophthalmichthys nobilis*)

Silver fish with an average weight of 40 pounds and a length of 2 feet. Head has no scales, mouth points downward and lacks teeth, eyes are low-set, and no barbels by nostrils. Dorsal (back) has dark blotches and silver underside. Body has small scales and small keel on the belly. Threatens freshwater lakes and rivers by disrupting aquatic food webs, impacting water quality, outcompeting native species and decreasing native fish populations. *Species not yet found in region.*

BLOODY RED SHRIMP (*Hemimysis anomala*)

Freshwater shrimp translucent to ivory-yellow in color with large eyes and 8 pairs of legs. Red pigments on the outer back (carapace) and tail (telson). Telson is square with a single long spine at each corner. Resembles native mysid shrimp. Adults on average grow up to half an inch long and females are larger than males. Threatens freshwater lakes and streams by outcompeting native species and limiting food availability for young fish.

GRASS CARP (*Ctenopharyngodon idella*)

Reaches an average weight of 40 pounds and can grow up to a length of 4 feet. Head has no scales. Eyes are small and low on the head even with the mouth. No barbels by nostrils. The dorsal (back) is olive brown, with silver sides and a white belly. Scales are large with prominent dark edges. Short dorsal fin and no keel. Sterilized fish are used by permit for weed management however non-sterile fish can outcompete native fish and promote algal blooms. *Sterile carp stocked in region.*

NEW ZEALAND MUD SNAIL (*Potamopyrgus antipodarum*)

Very small aquatic snail that reaches up to 0.25 to 0.5 inches in length. Shell is light to dark brown, elongated, with 5 to 6 right handed coiled whorls separated by deep grooves. The shell opening is smaller than the height of the whorls. Threatens freshwater lakes, rivers, and streams by outcompeting native snails and aquatic insects, disrupting food webs and decreasing native fish populations.

NORTHERN SNAKEHEAD (*Channa argus*)

A long and thin fish with an average weight of 20 pounds and length up to 3 feet. Single long dorsal (back) fin running nearly the length of the fish. Color is brown with dark blotches like a snake. Resembles native bowfin but has a longer anal fin. Head is flat with eyes close to the mouth. Threatens freshwater lakes and rivers by predating native species and decreasing native fish populations. *Species not yet found in region.*

RUSTY CRAYFISH (*Orconectes rusticus*)

Crustacean that can reach up to 3 to 4 inches in length. Males are slightly larger than females. Body is brownish green with dark rusty spots on each side of the outer back (carapace). Claws are large with red tips and black bands, and form an oval gap when closed. Resembles native crayfish but are more aggressive and can avoid predation. Threatens freshwater rivers and streams by outcompeting native crayfish, diminishing aquatic vegetation and decreasing native fish populations.

SILVER CARP (*Hypophthalmichthys molitrix*)

Silver fish with an average weight of 20 pounds and length of 2 feet. Head has no scales, mouth points downward, eyes are low-set, and no barbels by nostrils. The dorsal (back) and the underside are a uniform silver color with small scales. Keel is large on belly. Threatens freshwater lakes and rivers by disrupting aquatic food webs, decreasing fisheries and causing injury to boaters when startled. *Species not yet found in region.*

TENCH (*Tinca tinca*)

Reaches an average weight of 10 to 12 pounds and length up to 18 inches. Resembles carp. Body is dark olive or pale gold color with very small scales, dark rounded fins, and light bronze belly. Head has bright orange-red eyes, terminal mouth, and single barbel near each corner of the mouth. Thick mucus layer coating the skin like an eel. Threatens freshwater lakes and rivers by outcompeting native fish, stirring up sediments, and promoting algal blooms.

Thank you to WNY PRISM for references and formatting, and to SLELO PRISM for identifying species priorities and collaboration.



**INVASIVE SPECIES
MANAGEMENT**
SAINT LAWRENCE
EASTERN LAKE ONTARIO

Funding for this project was provided by: The Nature Conservancy, SLELO PRISM, The NYSDEC, and The NYS Environmental Protection Fund.

For more information and management options for these and other invasive species please visit: www.sleloinvasives.org

Special thanks to the Midwest Invasive Plant Network (www.MIPN.org). PHOTO CREDITS: Alan Butterworth, Center for Lakes and Research, Stephanie Evers, Jeff Gunderson, Daniel Gustafson, Ryan Hagerty, NOAA Great Lakes Environmental Research Lab, Shedd Aquarium, and the US Geological Survey Nonindigenous Aquatic Species Database. Taxonomy based on The USGS Invasive Species Program, and The University of Georgia Center for Invasive Species and Ecosystem Health (<http://www.bugwood.org>).