

Tips for preventing the spread of invasive species on construction sites and along roadways.

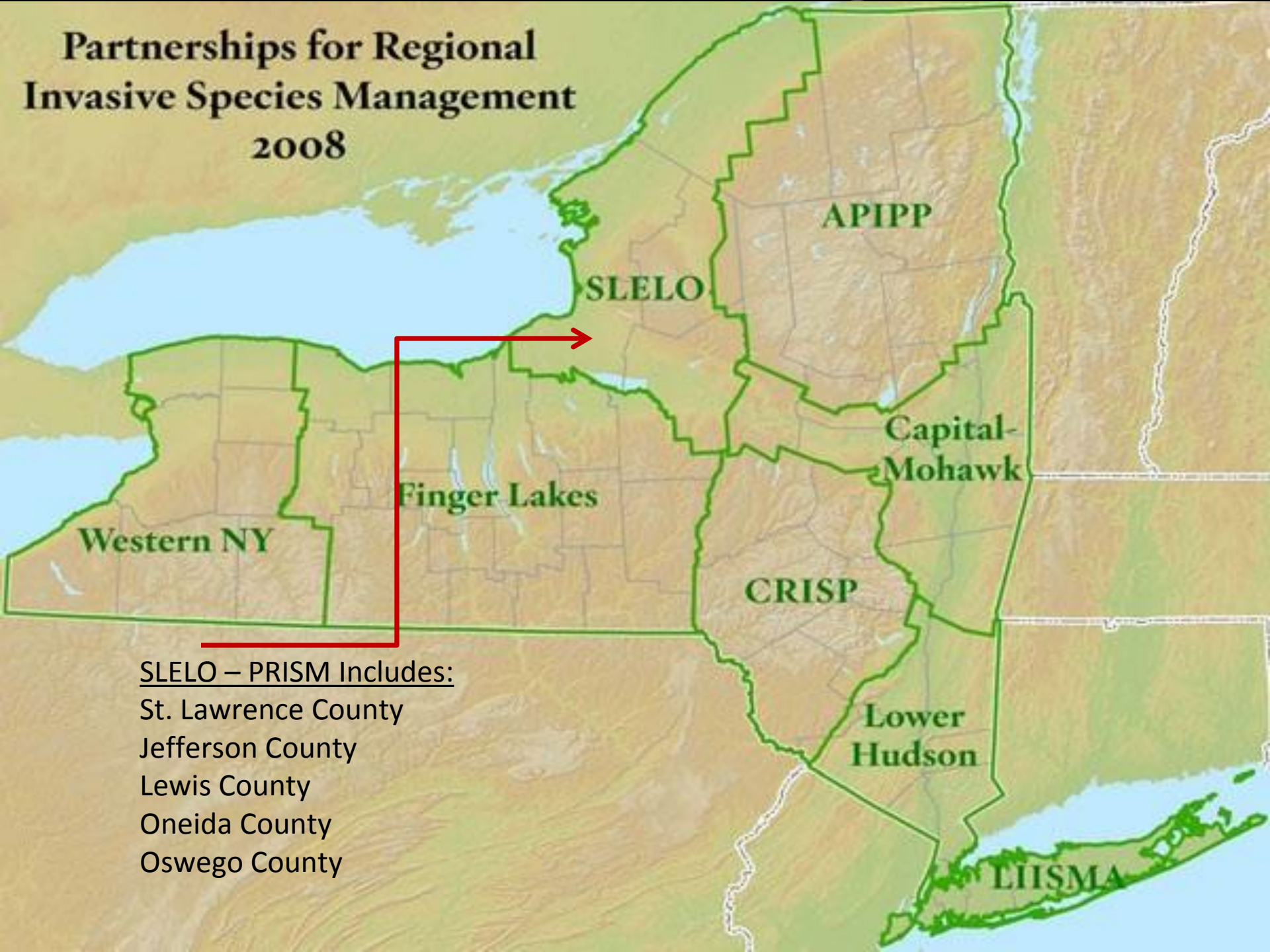


SLELO-PRISM

St. Lawrence Eastern Lake Ontario
Partnership for Regional Invasive
Species Management



Partnerships for Regional Invasive Species Management 2008



SLELO – PRISM Includes:

St. Lawrence County
Jefferson County
Lewis County
Oneida County
Oswego County

Collaboration Key To Our Success

- * Cornell Cooperative Extension
- * Tug Hill Tomorrow Land Trust & Tug Hill Commission
- * Sea Grant New York
- * Save The River Organization
- * New York State Department of Environmental Conservation.
- * New York State Office of Parks, Recreation & Historic Preservation.
- * New York State Department of Transportation
- * The Nature Conservancy
- * Ducks Unlimited
- * County Soil & Water Conservation Districts
- * Fort Drum Military Installation
- * Audubon, CNY



“Teaming Up To Stop The Spread of Invasive Species”

QUICK FACTS

- ✓ The economic impact of invasive species in the U.S. is estimated at 120 to 138 billion annually.
- ✓ Invasive species are a factor in the decline of 49 percent of all threatened or endangered species.
- ✓ Inv. Spp. can cause roadside hazards = decreased driver visibility, sign blockage & asphalt breakage.



Swallow-wort
(*Cynanchum* spp.)



Japanese knotweed
(*Polygonum cuspidatum*)

QUICK FACTS, continued

- ✓ Inv. Spp. can cause decrease in property value & loss of tourism/recreation revenues.
- ✓ Some invasive species cause serious human health impacts including death.
- ✓ Invasive species almost always out-compete, damage or displace more valuable native species.



Giant Hogweed



Health Impacts



Tips for Preventing the Spread of Invasive Species on Construction Sites and along roadways.

1. Learn to identify invasive species.
2. Survey the construction site and/or roadside for invasives “prior” to breaking ground or maintaining.
3. If found, mark & treat the site with herbicides two weeks prior to breaking ground or mowing.
4. Excavate the “seed-bank” and bury “deep” in a designated spoil zone.



Tips for Preventing the Spread of Invasive Species on Construction Sites & roadways, continued...

5. Clean equipment “power wash” prior to moving onto and off from each construction site – to prevent the import and export of plant materials & seeds.
6. Never mow through invasive plants – it will only serve to “spread” viable plant fragments and seeds. Instead carry a GPS, mark the site and send out your herbicide applicator to spray.



Additional Information..

When Clearing Land....

- ❖ Don't Move Firewood – there is a quarantine in New York State that restricts the movement of timber logs and firewood.

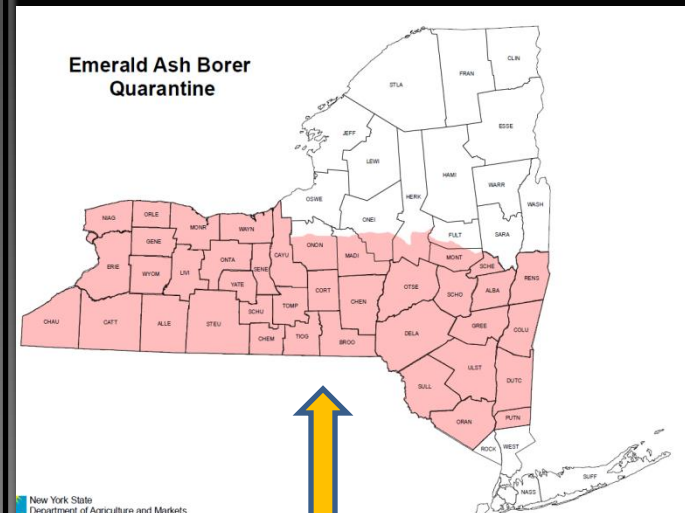
Visit: www.dontmovefirewood.org
or
www.nyis.info



Emerald Ash
Borer (EAB)



Asian
Long-horned
Beetle (ALB)



NYS Quarantine Zone as of
May 1st 2013

FOR MORE INFORMATION

Visit:

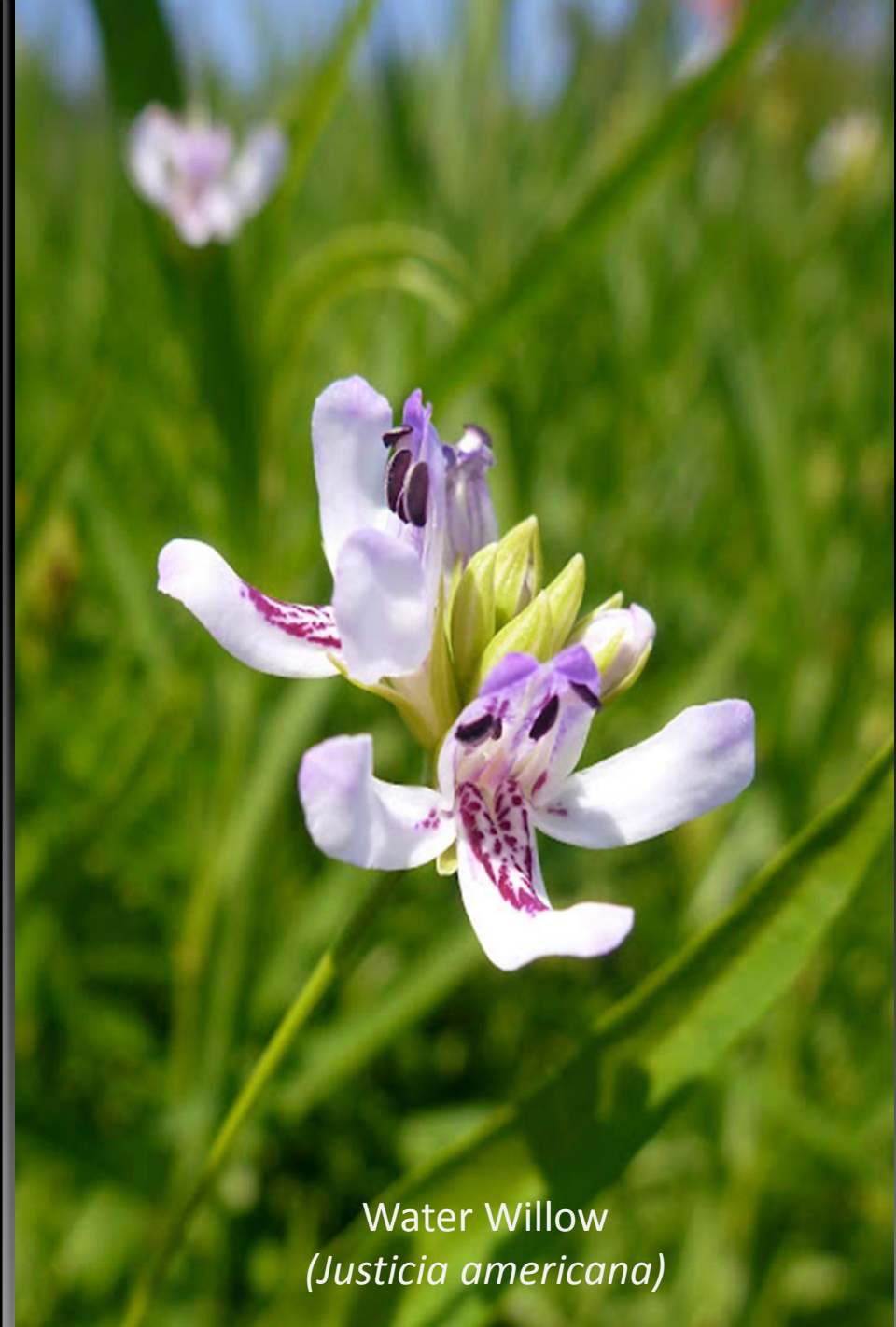
www.sleloinvasives.org

Rob Williams , Conservation Practitioner IV
rwilliams@tnc.org



SLELO-PRISM

St. Lawrence Eastern Lake Ontario
Partnership for Regional Invasive
Species Management



Water Willow
(*Justicia americana*)