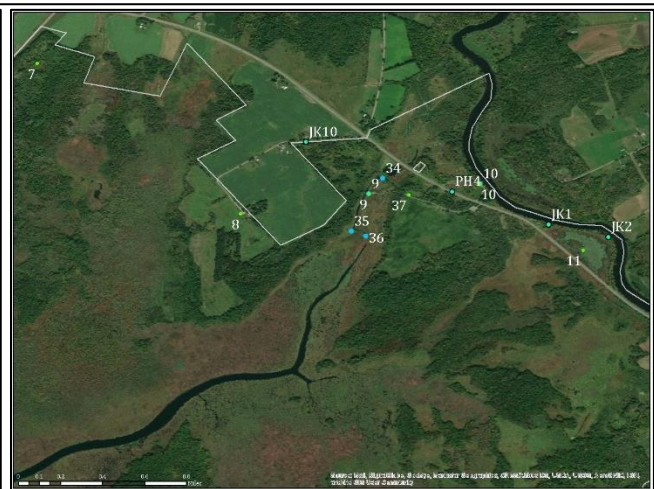
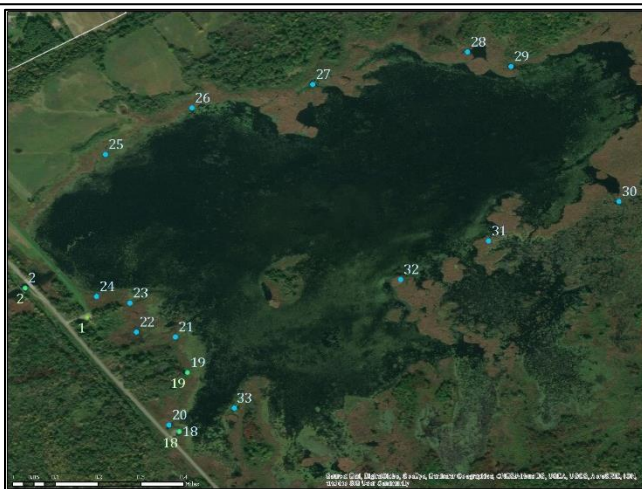
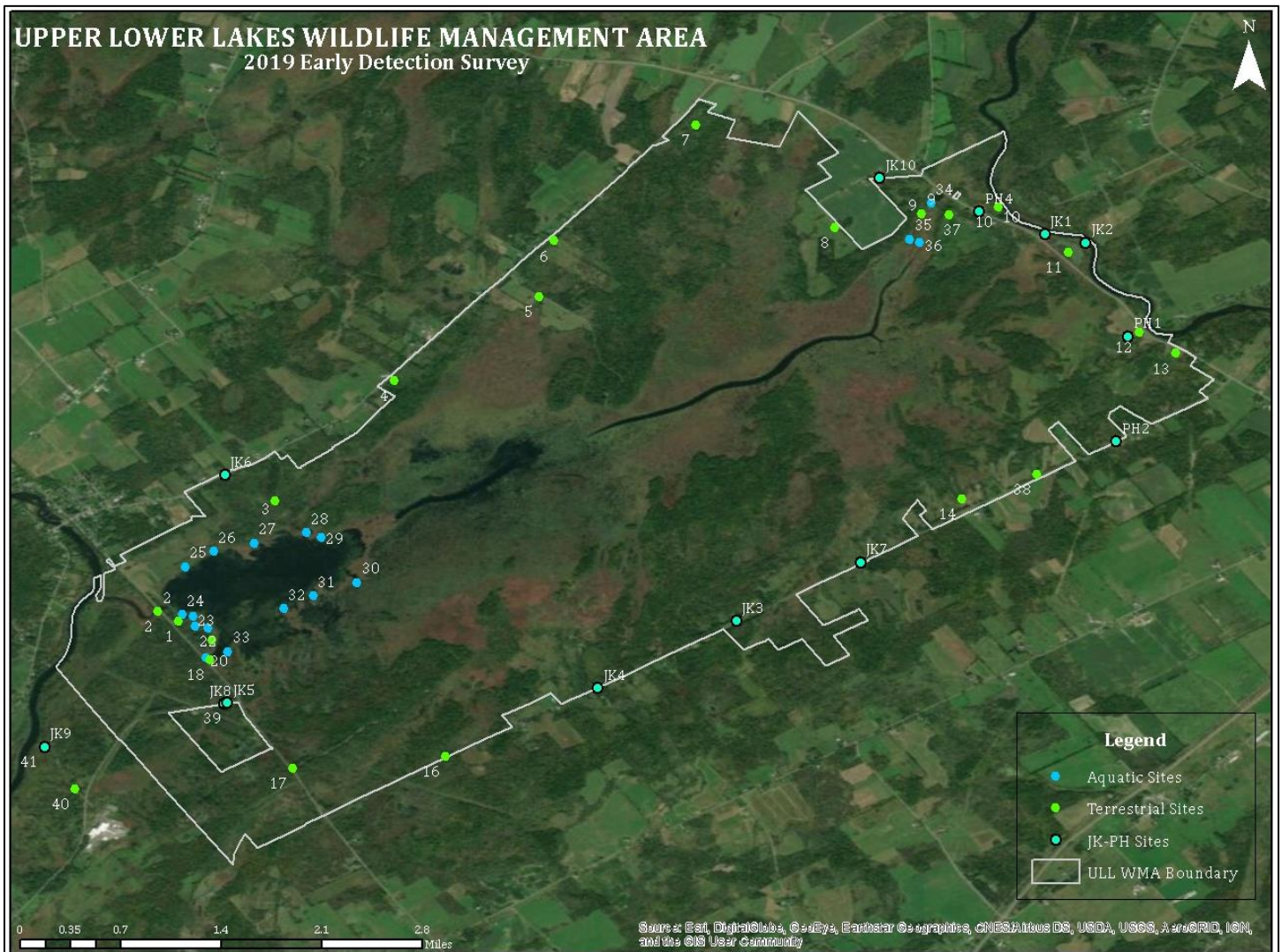


Upper and Lower Lakes Wildlife Management Area

SLELO-PRISM Early Detection Surveillance

Survey conducted August 22, 23 & October 9, 2019 - Report prepared on October 21, 2019
By Brittney Rogers, Robert Smith Aquatic and Terrestrial Restoration/Resiliency Coordinators



No new Prevention or Target Management Species were found during the 2019 field survey.

St. Lawrence Eastern Lake Ontario Partnership for Regional Invasive Species Management

The Nature Conservancy — 269 Ouderkirk Road — Pulaski, NY 13142

Survey Methods and Observations

The Upper and Lower Lakes Wildlife Management Area was surveyed in August and October by the SLELO Early Detection Team, Brittney Rogers and Robert Smith. The survey involved examining highly probable areas (HPAs) for both invasive terrestrial and aquatic species (see map above). The location of each HPA was marked using a handheld Garmin GPSmap 62. A total of 49 HPAs were resurveyed based on previous field surveys. Some sites were not surveyed but are still included in this report. Sites listed in the tables below with (-) were not surveyed in 2019. Visual observations were conducted for terrestrial surveillance at 23 HPAs to find and identify invasive species within the HPAs. Thirteen Aquatic HPAs were surveyed visually and via rake toss method, a double-sided rake tossed off both ends of the canoe to collect aquatic vegetation. The vegetation attached to the rake was identified and determined to be invasive or native.

The following **‘Invasive Species’** were found during the field survey (see tables below):

- Wild Parsnip (*Pastinaca sativa*) WP
- Purple Loosestrife (*Lythrum salicaria*) PL
- Common buckthorn (*Rhamnus cathartica*) CB
- Honeysuckle spp. (*Lonicera spp.*) HS
- Tufted Vetch (*Vicia cracca*) TV
- European Frogbit (*Hydrocharis morsus-ranae*) FB
- Pale swallow-wort (*Cynanchum rossicum*) PSW
- Japanese knotweed (*Fallopia japonica*) JK
- Eurasian Watermilfoil (*Myriophyllum spicatum*) EWM
- Chinese Mystery Snail (*Cipangopaludina chinensis malleata*) CMS
- Common Reed (*Phragmites australis ssp. australis*) PH

Table 1: Descriptions, coordinates, and invasive species sightings at Terrestrial HPA at Upper and Lower Lakes WMA.

HPA	Habitat Description	Latitude	Longitude	Invasive Species
1	Bird Watching Area and Parking Area	44.57962	-75.3092	WP, CB
2	Fishing Access	44.58061	-75.3113	PL, WP
3	Indian Creek Nature Center Parking and Trails	44.59178	-75.2995	WP, CB, HS
4	East Trailhead and parking area for Indian Creek Nature Center	44.60389	-75.2875	WP, CB, HS, TV
5	DEC Gated Road	44.61236	-75.2729	WP, CB, PL, HS, FB at dock
6	Field Access Road Pull-off	44.61794	-75.2714	-
7	Unmaintained Dirt Track Road	44.62964	-75.25711	CB, HS, WP, PSW
8	Parking Area	44.61930	-75.24310	WP
9	Car Top Boat Launch and Parking Area	44.62069	-75.23427	PL
10	Boat Launch Ramp and Parking Area	44.62137	-75.22658	PL
11	Wetland with Road Ring Loop	44.61680	-75.21950	HS, JK, WP, CB, PL, FB

12	Parking Area	44.60873	-75.2124	WP
13	Parking Area	44.60661	-75.2087	WP, PL
14	DEC Gated Road	44.59194	-75.2302	-
16	Road into the WMA	44.56601	-75.2823	-
17	DEC Gated Road	44.56479	-75.2977	-
18	Parking Area/Car Top Boat Launch	44.57575	-75.30608	WP, PL, FB
19	Parking Area and Handicap Trail to Lower Lake	44.57775	-75.30581	WP, CB, PL, FB
37	Parking Area	44.62061	-75.23151	WP, CB
38	Road Pull off Area	44.59441	-75.22268	WP, CB
39	Road Pull off Area	44.57137	-75.30434	JK, WP, PL, HS
40	Trailhead	44.56276	-75.31966	WP, CB, HS
41	Parking Area	44.56697	-75.32285	JK, CB, WP

Table 2: Descriptions, coordinates, and invasive species sightings at Aquatic HPAs at Upper and Lower Lakes WMA.

HPA	Habitat Description	Latitude	Longitude	Throw	Depth (ft)	# Total Spp.	# Inv .	Inv. Type	Visuals
2	Fishing Access	44.58061	-75.3113	1	3	2	0		FB, JK
				2		2	1	FB	
9	Water off of Car Top Boat Launch	44.62069	-75.23427	1	2	3	0		-
				2		3	0		
10	Water off of Boat Launch Ramp	44.62137	-75.22658	1	4	0	0		-
				2		0	0		
18	Water at Car Top Boat Launch	44.57575	-75.30608	1	3	4	2	FB,CMS	FB, EWM, CMS, PL
				2		4	3	FB, EWM, CMS	
19	Water at End of Handicap Trail	44.57775	-75.30581	1	3	6	1	FB	FB, PL
				2		5	1	FB	
20	Cove with Slow Moving Water	44.57598	-75.30643	1					-
				2					
21	Cove with Slow Moving Water	44.57895	-75.30621	1	4	6	2	EMW, CMS	FB, EWM, CMS
				2		6	1	EWM	

22	Cove with Slow Moving Water	44.57912	-75.30754	1	3	3	1	FB	FB, PL
				2		3	1	FB	
23	Cove with Slow Moving Water	44.58010	-75.30775	1					-
				2					
24	Cove with Slow Moving Water	44.58031	-75.30888	1	4	5	1	FB	FB
				2		4	0		
25	Area with Stagnant Water	44.58512	-75.30858	1	5	4	0		FB, PL
				2		3	0		
26	Cove with Slow Moving Water	44.58668	-75.30566	1					-
				2					
27	Cove with Slow Moving Water	44.58748	-75.30157	1	3.5	5	0		FB, PL
				2		4	0		
28	Cove with Slow Moving Water	44.58857	-75.29633	1	2	2	0		PL, FB
				2		2	0		
29	Cove with Slow Moving Water	44.58809	-75.29487	1					-
				2					
30	Area with Stagnant Water	44.58352	-75.29121	1	3	6	2	CMS, FB	FB, CMS, PL
				2		3	1	FB	
31	Area with Stagnant Water	44.58219	-75.29562	1	3	2	0		EWM, FB, PL
				2		4	1	EWM	
32	Area with Stagnant Water	44.58004	-75.29745	1	3	2	0		FB, EWM
				2		3	0		
33	Cove with Slow Moving Water	44.57655	-75.30423	1	4	3	1	FB	FB
				2		3	0		
34	End of Stream	44.62174	-75.23330	1					-
				2					
35	Cove with Stagnant Water	44.61810	-75.23546	1					-
				2					
36	Cove with Stagnant Water	44.61777	-75.23447	1					-
				2					

Table 3: Coordinates of Japanese Knotweed (JKW) and Phragmites (PH) found at Upper and Lower Lakes WMA.

Point	Latitude	Longitude	Notes	Present/Absent
JK 1	44.61856	-75.2219	Along the Road Ring Loop – Within HPA 11	Present
JK 2	44.61771	-75.2178	Along the Road Ring Loop – Within HPA 11	Present
JK 3	44.57958	-75.25304	Along Irish Settlement Road	Did not find
JK 4	44.57284	-75.2670	Along Irish Settlement Road	Did not find
JK 5	44.57137	-75.30434	Along Route 16 (Mcadoo Road) – Within HPA 39	Present
JK 6	44.59429	-75.3046	Along Route 14	Present
JK 7	44.58552	-75.2405	Along Irish Settlement Road	Did not find
JK 8	44.57127	-75.30464	Along Route 16 (Mcadoo Road)	Present
JK 9	44.56692	-75.32275	Along a DEC Owned Road – Within HPA 41	Present
JK 10	44.624233	-75.238611	Between sites 7 and 8 along roadside, Tully Rd.	Present
PH 1	44.60825	-75.2135	Along Route 68	Present
PH 2	44.59770	-75.2147	Along Irish Settlement Road	Present both sides of road
PH 4	44.62082	-75.22854	Along Route 68	Present