

St. Lawrence Eastern Lake Ontario Partnership for Regional Invasive Species Management
2018 Field Survey

Tug Hill Invasive Species Prevention Zone

SLELO-PRISM Early Detection Surveillance



July 11th, 13th, 16th, 17th

Report prepared on July 17th by Emma Gutierrez and Sarah Kirkpatrick

No Prevention “Watch-list” species were found in the 2018 survey.

Introduction and Background¹

New York State's Tug Hill Region is a 2,100-square mile area situated between Eastern Lake Ontario and the Black River Valley, and includes lands in Jefferson, Lewis, Oneida and Oswego counties. The largely undeveloped area includes important wetland and forested habitats, as well as an abundance of ponds and lakes. Numerous streams and rivers have their headwaters located within the Tug Hill, and Tug Hill's watersheds are important sources of clean water for Oneida Lake and Lake Ontario in addition to themselves providing high-quality aquatic and riparian habitats.

Within the larger Tug Hill region lies the Tug Hill Core Forest, comprised of nearly 150,000 acres of nearly contiguous forested lands. This large forested tract provides a variety of recreational opportunities, and managed forestry operations on both public and privately held lands, provides employment and helps support the area's rural economy. The core forest also provides valuable habitat for a variety of game species, as well as 29 rare animals and 70 rare plant species.

The Tug Hill Core Forest remains an area dominated by native species with relatively little impacts from many invasive species. Because of this, an Invasive Species Prevention Zone (ISPZ) was established to monitor and prevent the establishment of high-priority invasive species within the Tug Hill Core Forest (Figure 1).

¹ 1 Introduction and Background taken verbatim from the 2012 SLELO-PRISM Tug Hill ISPZ report, by Greg Chapman and Mike McHale; <http://www.sleloinvasives.org/wp-content/uploads/2012/07/Tug-Hill-I-S-P-Z-Field-Report-2012.pdf>

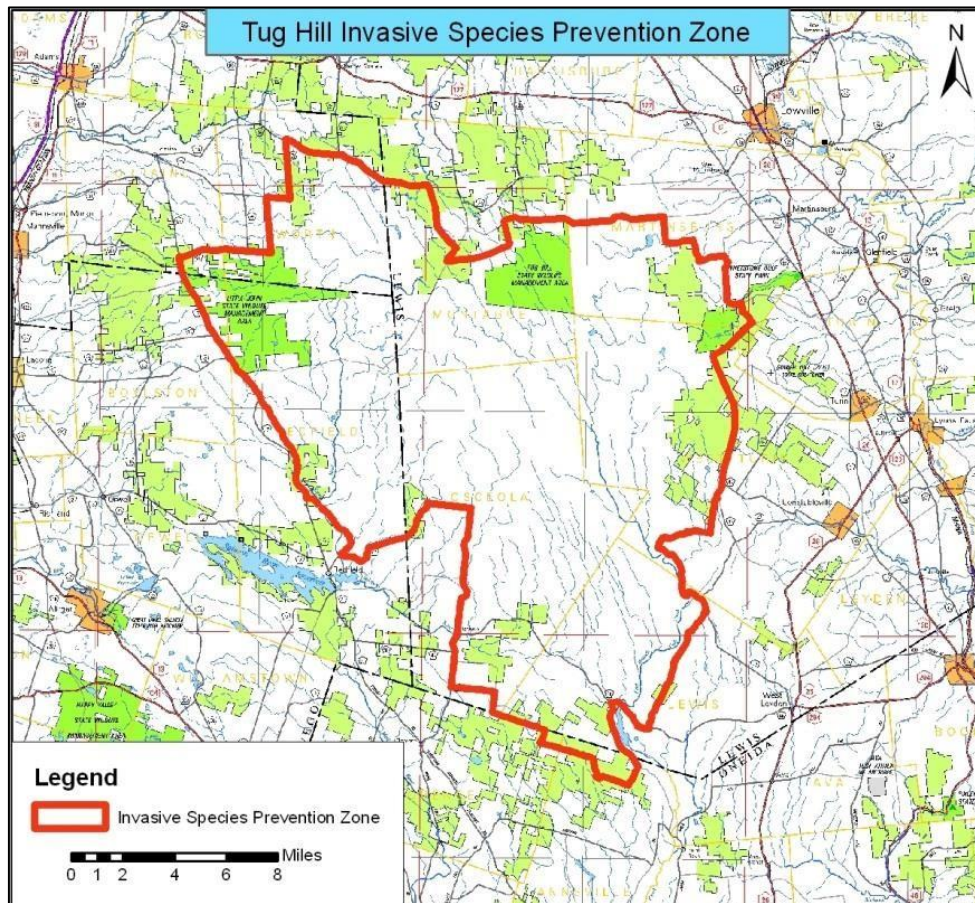


Figure 1. Tug Hill Invasive Species Prevention Zone.

Methods and Observations

In July of 2018, SLELO Early Detection Team Emma Gutierrez and Sarah Kirkpatrick surveyed the Tug Hill Invasives Species Prevention Zone for Target Management and Prevention “Watchlist” species. Terrestrial surveys were conducted visually and on foot at previously designated Highly Probable Areas (HPAs) where things like disturbance or human activity would lead to higher rates of invasive species spread (Fig. 2). Many of these sites were at fishing access points, trailheads, and sides of roads where human traffic was high along the perimeter of the zone.

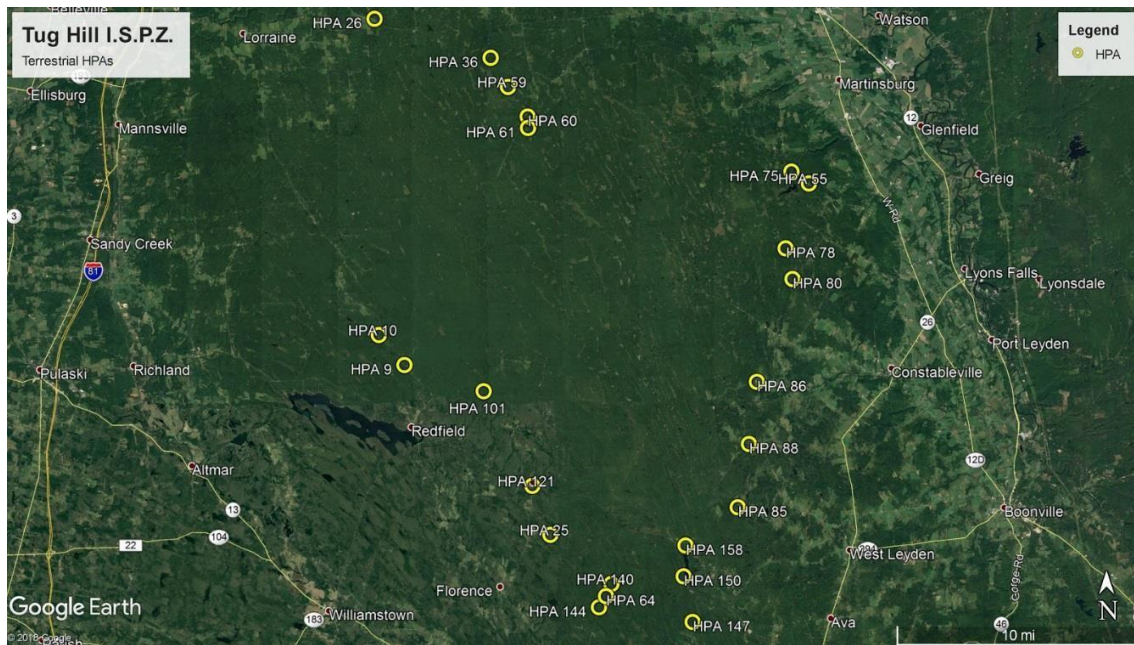


Figure. 2: Visual representation of HPA locations along the perimeter of the Tug Hill I.S.P.Z.

Commonly seen invasive species at HPAs included Japanese Knotweed, Wild Parsnip (Figure 3), and Honeysuckle (Figure 4). Japanese Knotweed (Figure 5) was also found in large populations between HPAs 140, 144, and 64, and around HPA 147. Other invasives noted were Garlic Mustard, Colt's Foot (Figure 5) and Common Buckthorn. Giant Hogweed was noted at HPA 49 and 85 in the 2014 survey and treated later that year. It was not present in the 2018 survey.



Figure 3 (above): Large populations of Wild Parsnip seen around Tug Hill



Figure 4 and 5 (above): (From L to R) Honeysuckle, Japanese Knotweed and Colt's Foot

HPA	Description	Latitude	Longitude	Invasives
9	N. Branch Salmon River Fishing Access	43.56970	-75.82695	WP
10	Public Fishing Access	43.58751	-75.84785	WP, GM
25	Snow Plow Turnaround/ Trailhead	43.46912	-75.70787	-
26	Jefferson County Parking Area	43.77444	-75.85076	WP, CB
36	Louis County Parking Area	43.75070	-75.75495	-
49	Giant Hogweed Treatment Site	43.72037	-75.55274	GH
55	Snow Mobile Trail	43.675854	-75.495519	CF
59	Parking/ ATV Trailhead	43.73374	-75.74126	-
60	Parking Area	43.71614	-75.72524	-
61	Parking Area/ Sear Pond Forest	43.70939	-75.72497	-
64	Bridge on Hanifan Road	43.43259	-75.66260	-
75	Whetstone Reservoir	43.68292	-75.50970	HS
78	Logging Platform	43.63765	-75.51490	-
80	Area with Many Ash Trees	43.61959	-75.50930	CF
85	Giant Hogweed Treatment Site	43.48499	-75.55481	-
86	Big Alder Creek Fishing Access	43.55904	-75.53874	-
88	E. Branch Fish Creek Fishing Access	43.52236	-75.5454545	WP, HS, AO, CB
101	Snowplow Turnaround/ Trailhead	43.55413	-75.76201	CF, GM
121	E. Branch Salmon River Fishing Access	43.49802	-75.72250	HS, WP, JK, CF
140	Campsite	43.43984	-75.65820	-
144	ATV Sign	43.42600	-75.66839	-
147	Campsite and Access to Small Lake	43.41716	-75.59201	HS
150	Fish Creek Reservoir Fishing Access	43.44420	-75.59919	HS
158	Fish Creek Fishing Access	43.46240	-75.59746	WP

Key: CF= Colt's Foot WP= Wild Parsnip JK= Japanese Knotweed
 HS= Honeysuckle GM= Garlic Mustard CB= Common Buckthorn
 GH= Giant Hogweed AO= Autumn Olive