

Special Note

The partners of the SLELO PRISM have identified 24 Priority Conservation Areas on which we conduct early detection surveillance on a two year rotation. This report is considered as an addendum to the original field report. The original report is attached to the end of this report.

St. Lawrence Eastern Lake Ontario Partnership for Regional Invasive Species Management

2014 Field Survey Addendum to Chaumont Bay

Water Chestnut, Hydrilla, Asian Clam and Rusty Crayfish Assessment

SLELO-PRISM Early Detection Surveillance

August 18th, 19th, 22nd and 26th 2014

Report prepared by Elizabeth MacEwen and Sabrina Dreythaler, 9/2/14



Figure 1. Panoramic view of Chaumont Bay, near Long Point State Park, photo by Sabrina Dreythaler

Summary

In August of 2014, SLELO field crew members Sabrina Dreythaler and Elizabeth MacEwen conducted early detection surveillance throughout Chaumont Bay targeting water chestnut (*Trapa natans*), hydrilla (*Hydrilla verticillata*), rusty crayfish (*Orconectes rusticus*) and Asian clam (*Corbicula fluminea*).

Methods

This survey was conducted using the same methods of rake-tosses and visual surveillance used in the 2012 survey. In 2012 the water chestnut surveillance and hydrilla surveillance were done separately. However, in 2014 both species were surveyed for at the same time. In 2014, it was decided that Asian clam (**Figure 2**) and rusty crayfish (**Figure 3**) should also be surveyed for. Crayfish and clams were surveyed for by looking manually under rocks at HPA 2. HPA 2 had the most suitable habitat for Asian clams and rusty crayfish, with shallow water and a rocky bottom. A small crayfish net was kept on hand to catch any that were found. After data collection, all invasive species occurrences were recorded in the iMap database.



Figure 2: Asian Clam
(*Corbicula fluminea*)



Figure 3: Rusty Crayfish
(*Orconectes rusticus*)

Observations

There were no occurrences of prevention/ watch list species¹. The target management species seen included water chestnut, purple loosestrife (*Lythrum salicaria*), swallow-wort (*Cynanchum* spp.) and Eurasian water-milfoil (*Myriophyllum spicatum*). Other invasive species included curly leaf pondweed (*Potamogeton crispus*), brittle naiad (*Najas minor*) and zebra/quagga mussels (*Dreissena* spp.). **Rusty crayfish and Asian clam were not found during the survey.**

In 2012 Guffin Bay (HPA 5) was dominated by water chestnuts. In July of 2014 partners from the Jefferson County Soil & Water Conservation District coordinated a hand-pull event at Guffin Bay. One month later only three small water chestnut plants were found at this site. In 2012, multiple large patches of swallow-wort were seen at HPA 2 at the boat launch and along the road. In 2014, only one small patch of young plants was seen and pulled near the boat launch (**Figure 4**). Observations indicated that this area may have been mowed recently. In 2012, purple loosestrife was not seen at HPA 2, but a single plant was found in 2014 and pulled.



Figure 4. Small patch of young swallow-wort plants seen at HPA 2. Photo taken by Elizabeth MacEwen.

Observation waypoints and results are presented in the following tables.

¹ For a list of prevention and targeted species, see the SLELO-PRISM 2012-2016 Strategic Plan, pp. 36 – 37.

Table 1. Rake-toss results at aquatic HPA's.





Key for all tables: EWM- Eurasian water milfoil ZM- Zebra/ quagga mussels CLPW- Curly Leaf Pondweed WC-Water chestnut BN-Brittle naiad PL-Purple loosestrife SW-Swallow-wort								
Location: HPA 1- Long Point State Park								Date: 8/18/2014
Waypoint	Latitude Longitude	Throw	Depth (ft)	# of Species	# of Invasives	Inv Spp. 2014	Inv Spp. 2012	Notes
004	44.029153	1	5	6	1	EWM	ZM,EWM	Visual 2014: CLPW
	-76.215161	2		4	1	ZM		
006	44.029781	1	7	3	1	ZM		Visual 2012: EWM
	-76.213619	2		2	0			
Location: HPA 3- 3 Mile Bay								Date: 8/26/2014
Waypoint	Latitude Longitude	Throw	Depth (ft)	# of Species	# of Invasives	Inv Spp. 2014	Inv Spp. 2012	Notes
022	44.080877	1	3	3	0		EWM	
	-76.196494	2		4	0			
024	44.071988	1	3	0	0		EWM, ZM	
	-76.215169	2		0	0			
Location: HPA 4- Sawmill Bay								Date: 8/22/2014
Waypoint	Latitude Longitude	Throw	Depth (ft)	# of Species	# of Invasives	Inv Spp. 2014	Inv Spp. 2012	Notes
015	44.066795	1	4	2	0			
	-76.150127	2		2	0			
016	44.064762	1	5	4	1	EWM	EWM	
	-76.130079	2		4	0			
017	44.063961	1	6	3	0		EWM, ZM	
	-76.132295	2		3	0			
018	44.061638	1	7.5	6	2	EWM, ZM	EWM	
	-76.134556	2		3	0			
019	44.070038	1	3.5	4	0		EWM	
	-76.138554	2		4	1	EWM		
020	44.072463	1					EWM, ZM	TOO DEEP TO DO RAKE TOSS in 2014
	-76.135249	2						
021	44.068887	1	5.5	2	0		EWM	
	-76.146996	2		2	0			
Location: HPA 5- Guffin Bay								Date: 8/19/2014
Waypoint	Latitude Longitude	Throw	Depth (ft)	# of Species	# of Invasives	Inv Spp. 2014	Inv Spp. 2012	Notes
009	44.03889	1	4.5	2	0		EWM, ZM	
	-76.133791	2		2	0			
010	44.040333	1	2.5	4	1	BN		2012: 20 WC-pulled 2014-Visual BN
	-76.12022	2		4	4	BN		
011	44.041467	1	3	4	1	EWM	EWM	
	-76.118536	2		1	0			
012	44.040204	1	3	3	0			2014: 3 WC-pulled
	-76.120218	2		2	0			
014	44.039322	1	2.5	5	1	BN	EWM	
	-76.120829	2		3	1	BN		

Table 2. Visual observations from aquatic and terrestrial HPA's.

Location: HPA 1- Long Point State Park			Date: 08/18/2014
Waypoint	Latitude	Invasive Species	Notes
	Longitude		
005	44.027054	EWM	large patches
	-76.216685		
007	44.029236	EWM	tall, large patches
	-76.214217		

Location: HPA 2- DEC Boat Launch			Date: 08/18/2014
Waypoint	Latitude	Invasive Species	Notes
	Longitude		
001	44.011518	PL	1 plant pulled
	-76.288555		
002	44.011108	SW	~20 young plants hand pulled
	-76.287249		
003	44.011128	SW	~7 young plants hand pulled
	-76.287172		

Location: HPA 3- 3 Mile Bay			Date: 08/26/2014
Waypoint	Latitude	Invasive Species	Notes
	Longitude		
023	44.080155	EWM	large patches
	-76.198277		

Location: HPA 5- Guffin Bay			Date: 08/18/2014
Waypoint	Latitude	Invasive Species	Notes
	Longitude		
008	44.032469	EWM	large patches
	-76.148579		

2014 Survey Maps

Key for all maps

Red dots are aquatic visual occurrences.

Green lines are an aquatic track.

Red lines are a terrestrial track

Green dots are terrestrial visual occurrences.

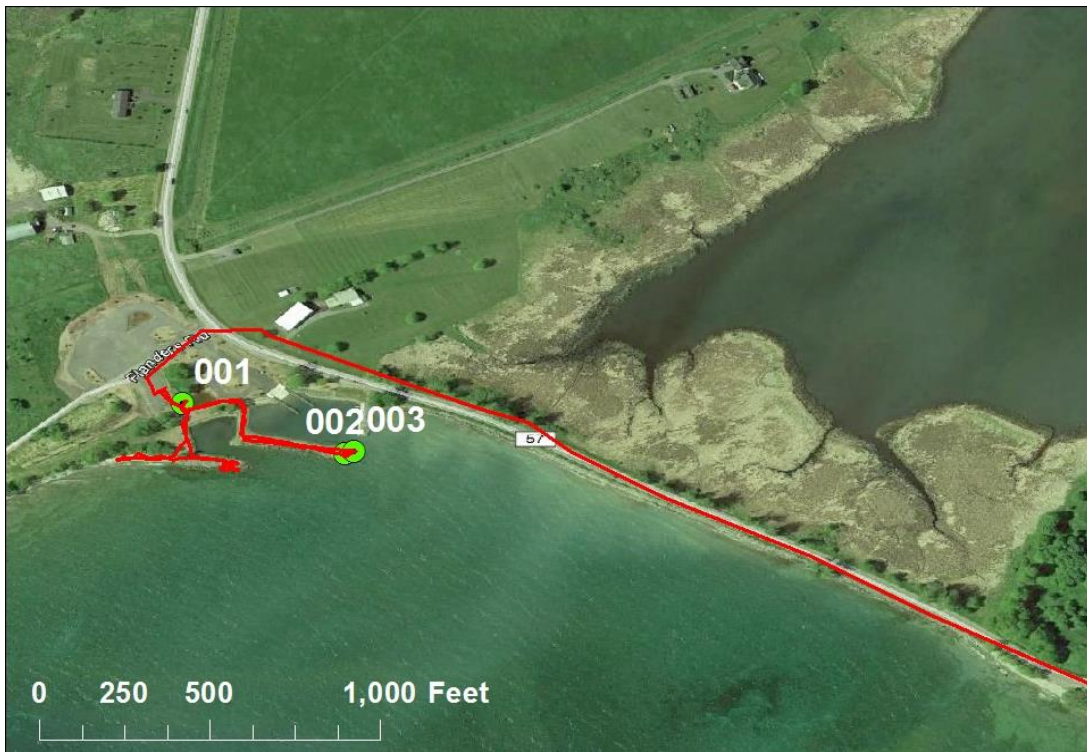


The **rake markers** are rake-toss points.



HPA-1, Long Point State Park

SLELO-PRISM
 c/o The Nature Conservancy
 269 Ouderkirk Road, Pulaski, NY 13142
 Rob Williams, PRISM Coordinator

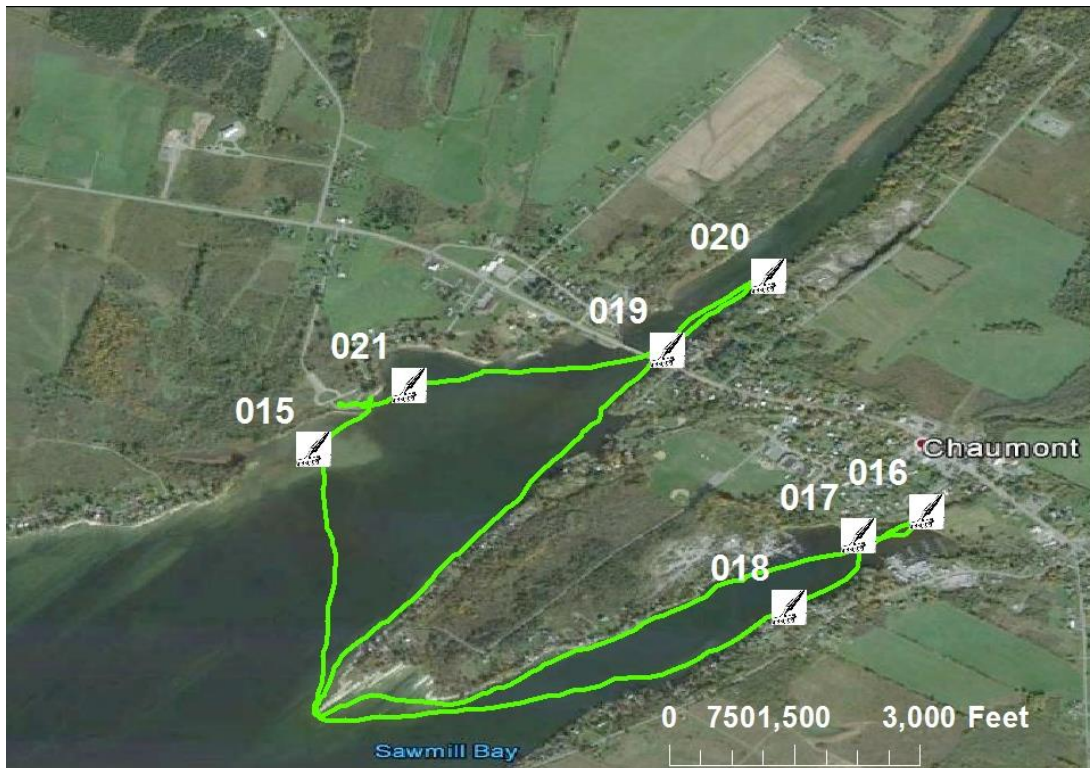


HPA-2, DEC Boat Launch



HPA-3, Three Mile Bay

C/O The Nature Conservancy
269 Ouderkirk Road, Pulaski, NY 13142
Rob Williams, PRISM Coordinator



HPA-4, Sawmill Bay

SLELO-PRISM
c/o The Nature Conservancy
269 Ouderkirk Road, Pulaski, NY 13142
Rob Williams, PRISM Coordinator

[Hyperlink to 2012 Field Report](#)

SLELO-PRISM
c/o The Nature Conservancy
269 Ouderkirk Road. Pulaski, NY 13142
Rob Williams, PRISM Coordinator