

Upper and Lower Lakes Wildlife Management Area SLELO-PRISM Early Detection Surveillance

June 17, 2013



Figure 1: Panoramic view of Lower Lake

Report prepared by Logan West and Mike McHale, 6/26/2013

Introduction and Background

Upper and Lower Lake Wildlife Management Area is an 8,757 acre wetland comprised of 4,341 acres of wetland. It lies between the Grasse River and Oswegatchie River and is three miles west of the village of Canton in St. Lawrence County, New York (Figure 2, 3). A water control structure ensures the availability of water for dependent birds that use the area for nesting. There is both shallow and deep water within the emergent wetlands. Outside of the wetland there is forested areas spread out among brush and open meadows.¹



Figure 2: Location of Upper Lower WMA in St. Lawrence County



Figure 3: Upper Lower WMA and the surrounding area

¹ Department of Environmental Conservation: <http://www.dec.ny.gov/outdoor/9325.html>

SLELO-PRISM

c/o The Nature Conservancy

269 Ouderkirk Road. Pulaski, NY 13142

Rob Williams, Coordinator

Survey Methods and Objectives

Seasonal crew members visited Upper & Lower Lakes WMA to establish and conduct Early Detection/Rapid Response Surveillance in what the crew deemed as High Probability Areas (HPA's). HPA's are areas where human activities or site conditions increase the probability that invasive species will be detected and/or become established. Identified HPA's are presented in (Table 1). Previous to visiting the WMA, a map featuring these HPA's was created (Figure 4).

Upper & Lower Lakes HPA's 2013

HPA-1, Parking area	HPA-12, Parking area
HPA-2, Parking area	HPA-13, Parking area
HPA-3, Parking area and trail	HPA-14, Parking area
HPA-4, Parking area	HPA-15, Parking area
HPA-5, Parking area	HPA-16, Parking area & road
HPA-6, Parking area	HPA-17, Parking area & road
HPA-7, Parking area	HPA-18, Parking area
HPA-8, Parking area and trail	HPA-19, Parking area
HPA-9, Parking area	HPA-20, Parking area & trail
HPA-10, Parking area	HPA-21, Parking area
HPA-11, Parking area	HPA-22, Boat Launch
	HPA-23, Boat Launch
	HPA-24, Boat Launch

Table 1: Identified HPA's in the Upper Lower Lakes Wildlife Management Area

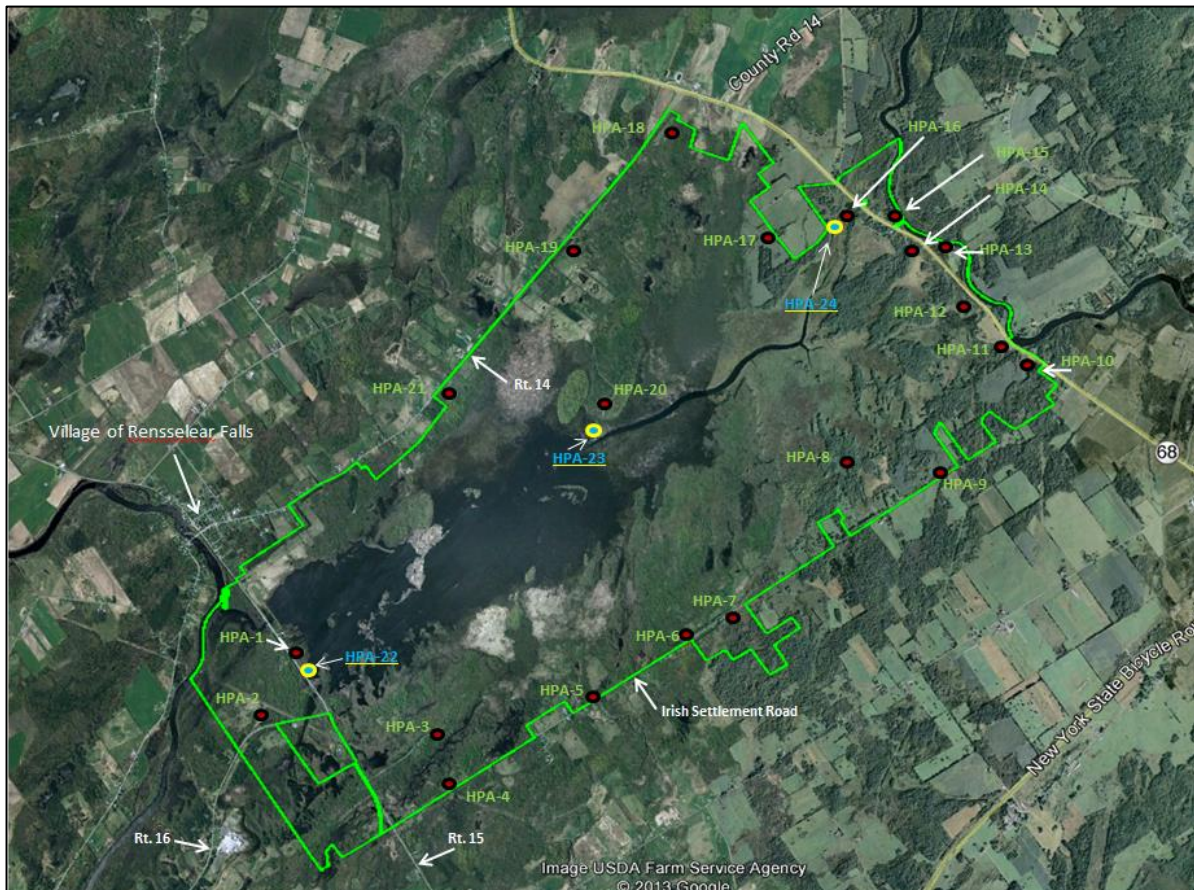


Figure 4: Perimeter map with potential HPA sites of Upper / Lower Lakes WMA

SLELO-PRISM
 c/o The Nature Conservancy
 269 Ouderkirk Road. Pulaski, NY 13142
 Rob Williams, Coordinator

Observations

Crew members spent one day in the field surveying mainly the southern boundary of the area, which is shown by the yellow track in Figure 5. Observations are presented in Table 2.

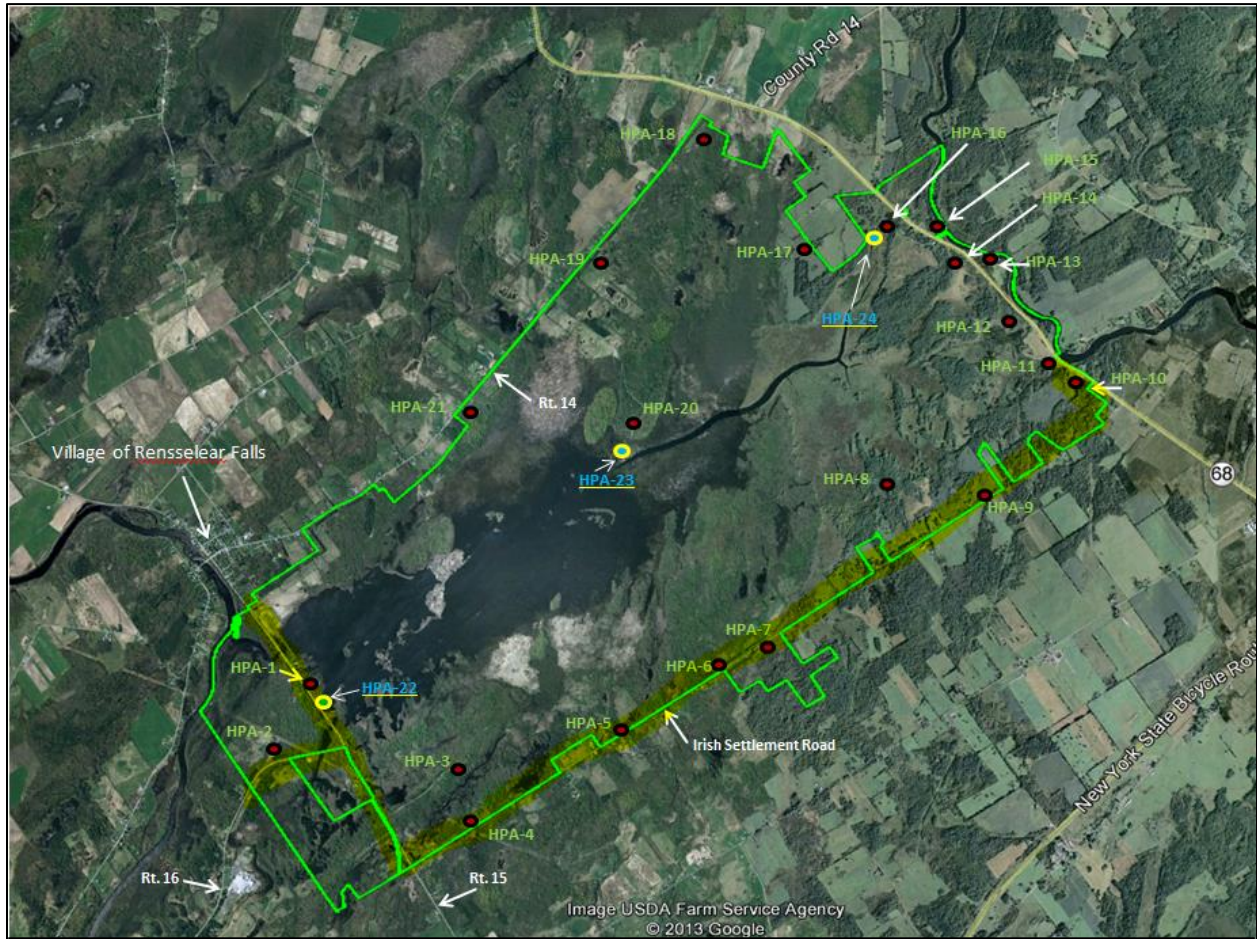


Figure 5: Upper Lower Lakes WMA showing HPA's and the initial survey area along the southern boundary of the WMA.

Table 2: Survey data for invasives frond

Point	Invasive Present	Latitude Longitude	Notes
124	Japanese Knotweed	44.574826 -75.26288	Six Patches largest being approximately 80x30 feet
129	Phragmites	44.597702 -75.214658	Found on side of road

SLELO-PRISM
 c/o The Nature Conservancy
 269 Ouderkirk Road. Pulaski, NY 13142
 Rob Williams, Coordinator

Partner Observations & Duplication of Efforts

While collaborating with partner organizations, it was determined that there was additional field surveillance being conducted in the WMA by staff from the Region 6 Department of Environmental Conservation. After comparing field data, we found that each crew were finding similar results; therefore in an effort to avoid duplication of efforts, the SLELO-PRISM technicians decided not to continue with Early Detection/Rapid Response surveillance in the Upper Lower Lakes Wildlife Management Area thus allowing the DEC staff to continue their assessment.

SLELO-PRISM
c/o The Nature Conservancy
269 Ouderkirk Road. Pulaski, NY 13142
Rob Williams, Coordinator