

Native Red-headed Borer Verses Invasive Emerald Ash Borer Signs of Infestation on Ash Tree/ Insect Characteristics

Red-headed Borer (*Neoclytus acuminatus*)

- Woodpecker holes are **deeper** and more localized.



- Ash trees infested with *N. acuminatus* generally **don't have their bark stripped completely off by woodpeckers.**

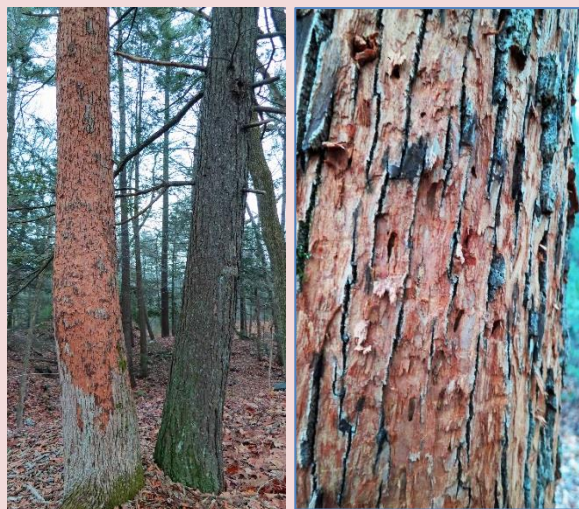






Emerald Ash Borer (*Agrilus planipennis*)

- Woodpecker holes are **more shallow** and have a spread out **checkerboard pattern.**



- EAB infested trees are often **striped of their bark** due to woodpecker damage.



Native: Red Headed Borer Symptoms	Invasive: Emerald Ash Borer Symptoms
<p>➤ Larval galleries are deeper in the sapwood; galleries are generally meandering, not S-shaped.</p> 	<p>➤ EAB larval galleries are tightly S-shaped (serpentine shaped).</p> 
<p>➤ Larvae have a larger rounded head with rounded segmented bodies</p> 	<p>➤ Larvae have a small flat heads with distinctive nested bell shaped segmented bodies.</p> 

Larval Differences

