

2018 Field Survey
Emerald Ash Borer at Oneida Lake
SLELO-PRISM Early Detection Surveillance

June 20th, 21st

Report prepared by Sarah Kirkpatrick and Emma Gutierrez on June 22nd, 2018

“Target Management” species Emerald Ash Borer (EAB) was detected on the south shore of Oneida Lake during the 2018 Early Detection Team’s survey of the area. Sightings were confirmed at HPA 8 at Chapman Park (43.15597, -75.89178) (Fig. 1). A large number of ash trees within the park and surrounding areas showed symptoms of infestation.

Infestation was first identified by multiple dead or dying branches in the canopy (Fig. 2). Upon closer inspection “D-shaped” exit holes and woodpecker damage, or “blonding,” were identified (Fig. 3).

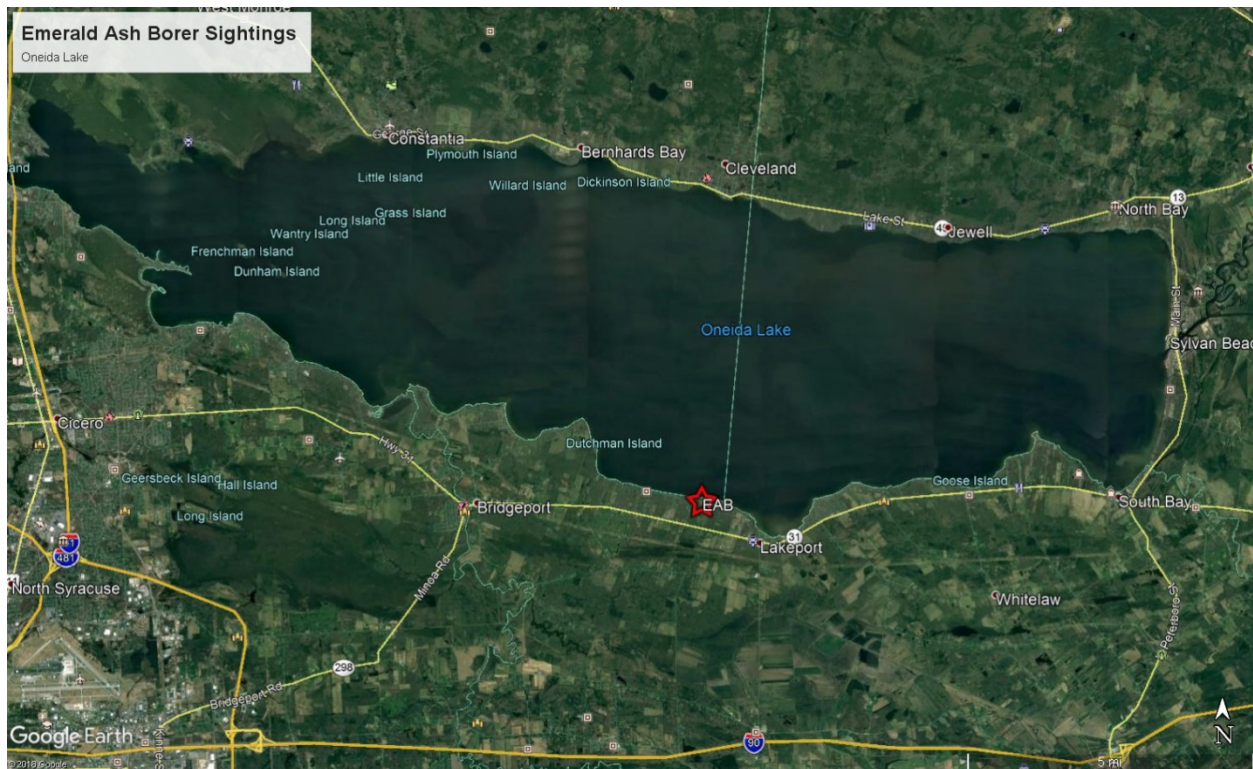


Fig. 1: HPA 8 EAB confirmation location



Fig. 2: Canopy dieback on ash tree at Oneida Lake



Fig. 3: "D-shaped" exit holes and blanding of ash trees