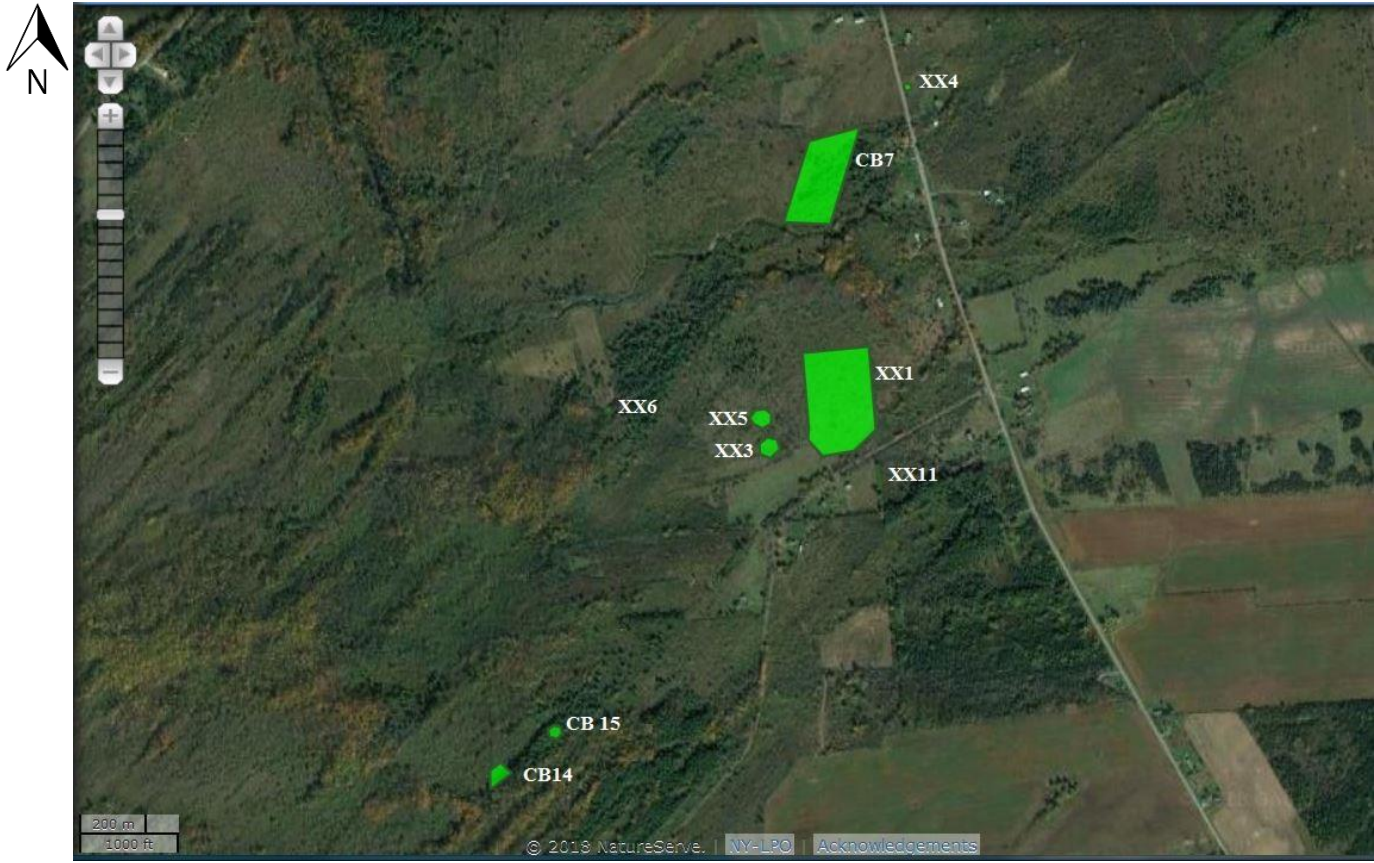


# 2018 Treatment of Swallow-wort (*Cynanchum rossicum*) Chaumont Barrens




**Map details:**

Site: Chaumont Barrens

Treatment species: *Cynanchum rossicum* (Pale swallow-wort)

Treatment type: Chemical spray

Treatment team: SLELO PRISM Rapid Response Team

 = Treatment area
**Site locations and descriptions**

Site	Latitude	Longitude	Area	Date of treatment
CB1	44.09779	-76.07188	1.1 acres	06/20/18
CB2	44.09364	-76.07407	8,710 sq. ft.	06/20/18
CB3	44.09708	-76.08948	3 acres	06/19/18, 06/26/18
CB7	44.11813	-76.06593	6.1 acres	06/02/18
CB8	44.09807	-76.0871	11,400 sq. ft.	06/26/18
CB10	44.09324	-76.09068	0.7 acres	06/19/18
CB11	44.09731	-76.08148	1,981 sq. ft.	05/29/18
CB13	44.09521	-76.08276	11,412 sq. ft.	05/29/18
CB13A	44.09318	-76.08415	7,850 sq. ft.	05/29/18
CB14	44.10652	-76.07441	17,764 sq. ft.	06/21/18
CB15	44.10686	-76.07309	7,925 sq. ft.	06/21/18
CB16	44.09422	-76.09169	5,024 sq. ft.	06/19/18
HB2010	44.09422	-76.0827	2.6 acres	05/29/18
XX1	44.1143	-76.06514	8.7 acres	07/11/18
XX3	44.11285	-76.06748	17,622 sq. ft.	06/21/18
XX4	44.12037	-76.06304	2,826 sq. ft.	05/31/18
XX5	44.11354	-76.06739	17,662 sq. ft.	06/21/18
XX6	44.11369	-76.07166	1,256 sq. ft.	07/12/18
XX 11	44.11227	-76.06390	2,041 sq. ft.	07/11/18

Maps retrieved from iMap Invasives Treatment Layer

**SLELO PRISM**

c/o The Nature Conservancy

269 Ouderkirk Rd.

Pulaski, NY 13142

<http://www.sleloinvasives.org/>