

2018 Field Survey Salmon River Estuary

SLELO-PRISM Early Detection Surveillance
June 5th, 2018

Report prepared by Sarah Kirkpatrick and Emma Gutierrez on June 6th, 2018



Figure 1. Panoramic view of Salmon River Estuary at Pine Grove Road boat launch. Photo by Sarah Kirkpatrick.

Methods and Observations

No Prevention “Watch-list” species were found in the 2018 survey.

In June of 2018, SLELO Early Detection team members Sarah Kirkpatrick and Emma Gutierrez surveyed the Salmon River Estuary for aquatic invasive species using a rake toss technique and visual observations. Highly Probable Areas (HPAs) were selected for surveying based off prior reports (Table 1) and accessed by canoe (Fig. 2). At each HPA, a weighted rake was tossed from either side of the canoe and dragged to collect plant specimens. Surrounding water and landscape at each HPA was also scanned for visuals of aquatic and terrestrial invasives.

Target species determined to be in the Salmon River Estuary according to this survey include water chestnut (HPA 5, 8), Eurasian water-milfoil (HPA 4), European frog-bit (HPA 3, 5-21), curly-leaf pondweed (HPA 4, 5, 8, 16-17), yellow iris (HPA 5, 7), and Japanese knotweed (HPA 1, and on shore between HPS’s 3 and 1).

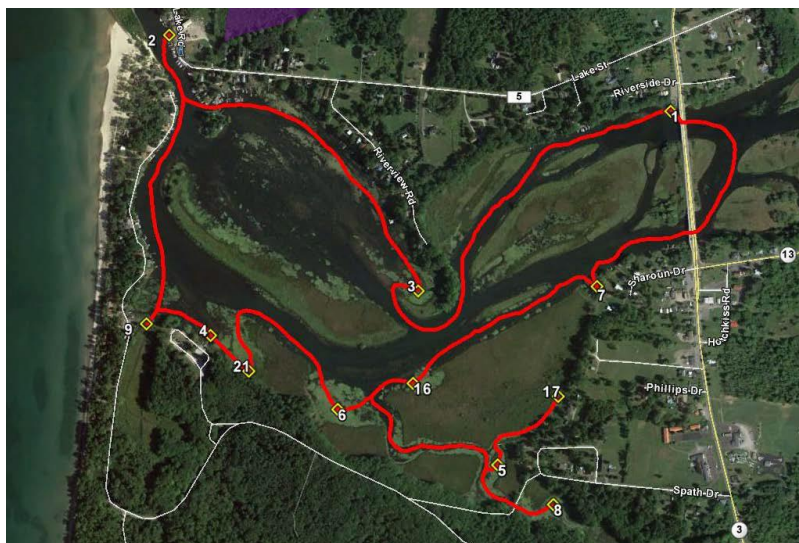


Fig. 2: HPA locations and canoe path

Table 1: HPA sites and invasive spp. found

HPAs	Description	Latitude	Longitude	Throw	Depth (ft)	Invasives	Visuals
1	Dock	43.56732	-76.2028	1	5		KW
				2	5		
2	Cove Near Residentials	43.56803	-76.20486	1	9		
				2	9		
3	Docks Near River Mouth	43.56911	-76.20418	1	2		FB
				2	2		
4	Pine Grove Boat Launch	43.57471	-76.20256	1	5		EM, CP
				2	5		
5	Near Private Dock	43.5727	-76.19968	1	2	CP	WC, FB, YI
				2	2		
6	Peninsula's Cove	43.56741	-76.19601	1	2.5		FB
				2	2.5		
7	Middle of Grassy Patches	43.56946	-76.19221	1	3		YI, FB
				2	3		
8	Cove Near Fishing Parking	43.57058	-76.18743	1	2	CP	WC, FB, CP
				2	2.5		
9	Quiet Cove Near Tributary	43.57095	-76.18277	1	1		FB
				2	1		
16	Quiet Area Near Grasses	43.56557	-76.19625	1	3	CP	FB
				2	2		
17	End of Stream	43.56448	-76.19269	1	2	FB, CP	FB, CP
				2	2		
21	Cove Near Boat Launch	43.56649	-76.20196	1	2.5		FB, CP
				2	3		

Key: WC = Water chestnut EM = Eurasian water-milfoil KW = Japanese knotweed
 FB = European frog-bit YI = Yellow iris CP = Curly-leaf pondweed



Fig 3: (From Left to Right) European Frog-bit, Yellow Iris, Curly-leaf Pondweed