

2018 Field Survey
French Creek Wildlife Management Area
SLELO-PRISM Early Detection Surveillance

June 8th and 12th

Report prepared by Sarah Kirkpatrick and Emma Gutierrez on June 14th, 2018

Methods and Observations

No Prevention “Watch-list” species were found in the 2018 survey.

In June of 2018, SLELO Early Detection team members Sarah Kirkpatrick and Emma Gutierrez surveyed French Creek Wildlife Management Area for aquatic invasive species using a rake toss technique and terrestrial invasive species using visual observations. Highly Probable Areas (HPAs) were selected for surveying based off prior reports (Table 1,2) and accessed by foot and canoe (Fig. 2,3). At each aquatic HPA, a weighted rake was tossed from either side of the canoe and dragged to collect plant specimens. Surrounding water and landscape at each HPA was also scanned for visuals of aquatic and terrestrial invasives. Terrestrial HPAs were accessed by car and surveyed on foot using visual cues.

Target species determined to be at French Creek according to this survey include terrestrial species such as Common Buckthorn (HPA 1, 8, 9, 12, 13), Wild Parsnip (HPA 1,3,8,13), and Colt’s Foot (HPA 8). Aquatic species found included Eurasian Milfoil (HPA 18, 16, 14, 17, 6, 19, 20) and Curly-leaf Pond Weed (HPA 7, 18, 2, 16, 6,19,20, 15). European Frogbit was seen at every aquatic HPA location.

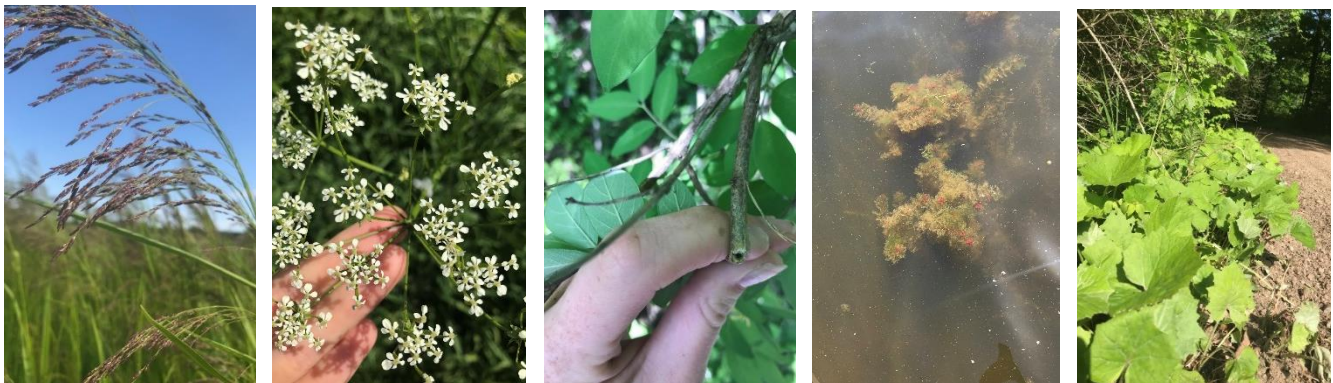


Fig. 1: From Left to Right: Phragmites, Wild Chervil, Honeysuckle, Eurasian Milfoil, Colt’s Foot

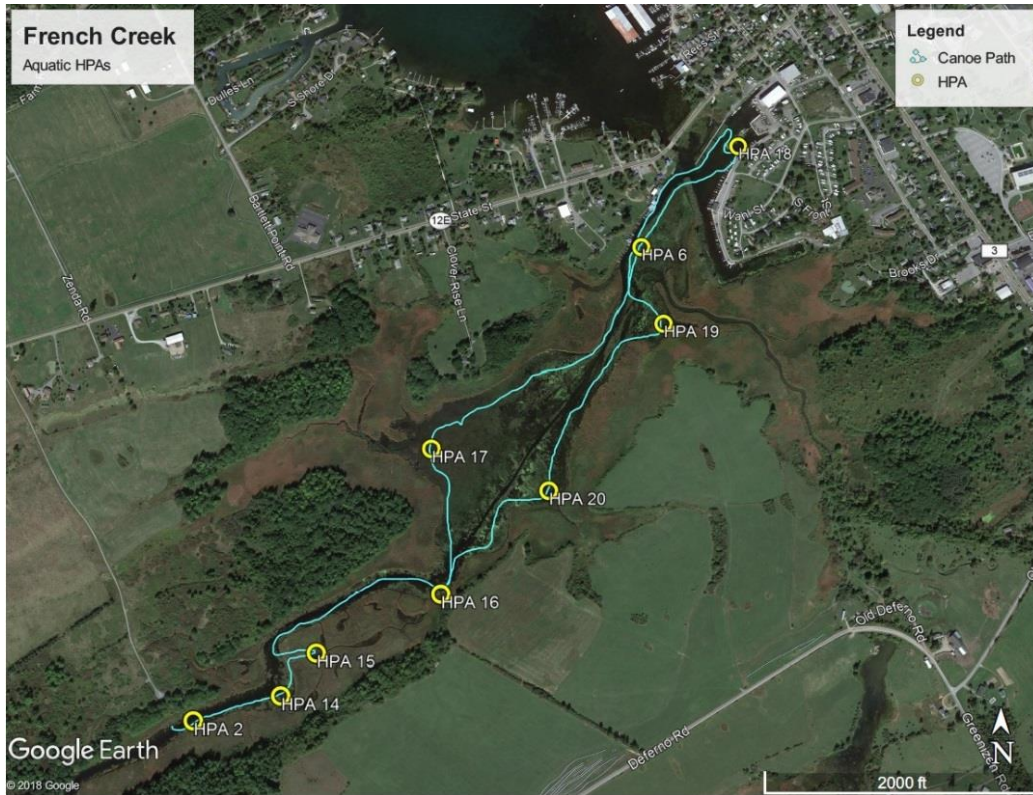


Fig. 2: Canoe Path and Aquatic HPAs

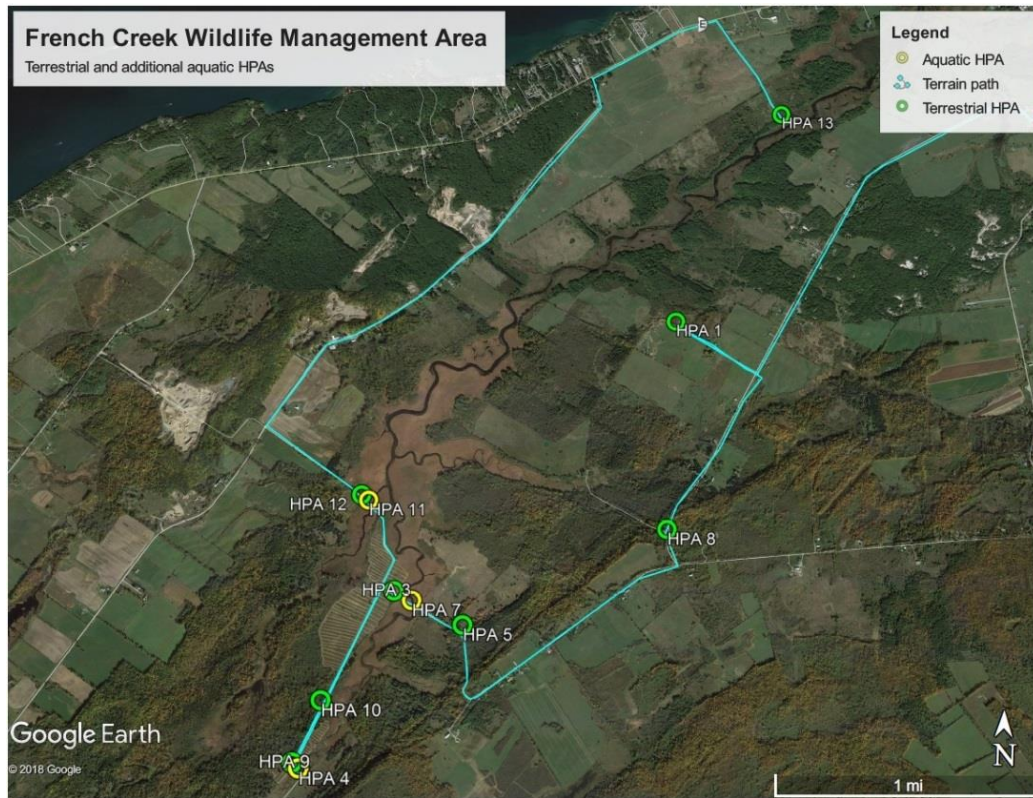


Fig. 3: Terrestrial Path and HPAs

Table 1: Terrestrial HPA Descriptions, Locations, and Invasives found

HPA	Description	Longitude	Latitude	Visuals
1	Grant Rd. Parking Area	44.20584	-76.1156	HS, CB, WP, PH
3	Bevins Rd. Parking	44.18898	-76.1360	PH, WP, GM, HS
5	Bevins Rd. Parking Loop	44.18702	-76.1305	HS, GM, WC
8	DEC Gated Rd	44.19457	-76.11921	CF, HS, CB, GM, WP
9	Parking Area	44.17947	-76.14292	CB, HS
10	Parking Area	44.18280	-76.14124	HS
12	Parking Area	44.19449	-76.13920	CB, HS
13	Rt. 12E Access Rd	44.22018	-76.10363	WP, GM, FB, CB

HS= Honeysuckle CB= Common Buckthorn WP= Wild Parsnip PH= Phragmites
 GM= Garlic Mustard FB= European Frogbit CF= Colt's Foot WC= Wild Chervil

Table 2: Aquatic HPA Descriptions, Locations, Rake Tosses, and Invasives found

HPA	Description	Latitude	Longitude	Throw	Depth	Species	Visuals
11	French Creek Rd. Bridge	44.19421	-76.13860	1	4	FB	FB
				2	4	FB	
7	Bevins Rd Fishing Access	44.18855	-76.1346	1	3	FB, CL	FB
				2	3		
4	French Creek Rd Bridge	44.17911	-76.1424	1	3		FB
				2	3		
18	French Creek Marina	44.23203	-76.08817	1	3	EM	EM, FB, CL
				2	3		
2	Rooftop Boat Access	44.22018	-76.10363	1	2.5	CL	FB
				2	3		
16	Cove with Slow Moving Water	44.22298	-76.09631	1	3	CL	FB
				2	3	FB,EM	
14	Cove with Slow Moving Water	44.22110	-76.09969	1	3	EM	FB
				2	3	EM	
17	Large Cove with Stagnant Water	44.22479	-76.09618	1	2	FB,EM	
				2	2	FB	
6	Area of High Boat Access	44.23039	-76.0896	1	2.5	CL	FB
				2	3	EM	
19	Cove with Stagnant Water	44.22820	-76.08871	1	3	EM	CL, EM
				2	3	EM	
20	Cove with Slow Moving Water	44.22414	-76.09262	1	3	EM,FB	CL, FB
				2	2.5	EM,FB	
15	Cove with Stagnant Water	44.22160	-76.09951	1	2.5	FB	CL, FB
				2	2.5	FB	

EM= Eurasian Milfoil CL= Curly-leaf Pond Weed FB= European Frogbit