

Special Note

The partners of the SLELO PRISM have identified 24 Priority Conservation Areas on which we conduct early detection surveillance on a two year rotation. This report is to be considered as an addendum to the original field report.

Addendum to

Upper and Lower Lakes Wildlife Management Area

SLELO-PRISM Early Detection Surveillance

June 30th and July 7th 2015

Report prepared by Caitlin Muller and Ben Hansknecht on July 10th 2015



Figure 1. Panoramic view of Upper and Lower Lakes WMA at HPA-9. Photo taken by Caitlin Muller.

Summary:

On June 30 and July 7, the Early Detection Team surveyed previously established HPA's in the Upper and Lower Lakes Wildlife Management Area. A survey was conducted on the perimeter of the management area and an aquatic survey was conducted at boat launches and fishing access points. At each HPA a terrestrial survey was conducted and areas with paths were surveyed. At aquatic HPA's a rake-toss was performed to determine the species present.

There were no Prevention "Watch-list" species observed in 2015. At most HPA's wild parsnip (*Pastinaca sativa*) was observed. HPA 5 had a large amount of wild parsnip present along both sides of the unmaintained road (Figure 2). This was the largest population of wild parsnip observed in the Wildlife Management Area. The perimeter of Upper and Lower lakes also had wild parsnip, common buckthorn, and glossy buckthorn present.



Figure 2. Wild parsnip overgrown on the sides of HPA 5. Photo taken by Caitlin Muller.



Figure 3. Purple loosestrife found at HPA 9. Photo taken by Caitlin Muller

Purple loosestrife (*Lythrum salicaria*) and European frog-bit (*Hydrocharis morsus-ranae*), both of which were not found in the 2013 survey, were observed in 2015. Frog-bit was found at HPA's 9, 18 and 19, while purple loosestrife was found at HPA's 2, 9 and 18. The purple loosestrife observed was found in multiple small populations at each HPA (Figure 3).

Five sites with Japanese knotweed (*Fallopia japonica*) were previously identified by the 2013 field crew (Figure 4). Three new Japanese knotweed sites were identified during the 2015 survey. The two sites with Phragmites were still overrun with plants (Figure 5). One new site of Phragmites was observed in 2015. The new population may be on private property, but is worth noting due to its proximity to the WMA.

Three aquatic HPA's were sampled using the rake-toss method. Only HPA 18 was found to have an invasive species, European frog-bit. HPA 10 was canoed to check the perimeter for purple loosestrife, due to the proximity of new invasions. No purple loosestrife was observed along the HPA.



Figure 4. Japanese knotweed observed at HPA 11. Photo taken by Caitlin Muller



Figure 5. Phragmites observed at along Irish Settlement Road. Photo taken by Caitlin Muller

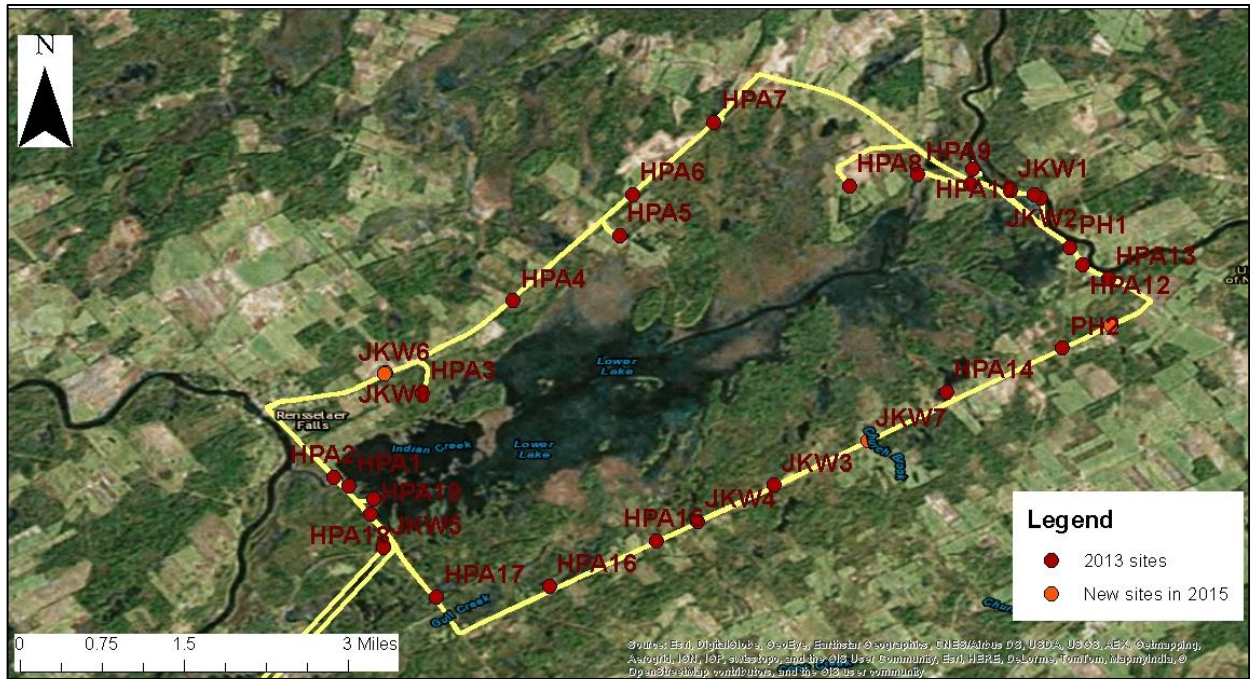


Figure 6: HPA's and invasive species observed in Upper and Lower Lakes WMA

Table 1. Japanese knotweed and Phragmites observed in Upper and Lower Lake WMA. New Sites are highlighted in yellow

Waypoint	Latitude	Longitude	Notes
JKW1	44.61855	-75.2218	Within a small U-shaped road
JKW2	44.61763	-75.2177	Within a small U-shaped road
JKW3	44.57958	-75.2529	Along Irish Settlement Road
JKW4	44.57485	-75.2631	Along Irish Settlement Road
JKW5	44.5713	-75.3047	Along Route 16 (Mcadoo Rd)
JKW6	44.59429	-75.3046	
JKW7	44.58552	-75.2405	
JKW8	44.59446	-75.3044	
PH1	44.6111	-75.2138	
PH2	44.59772	-75.2149	Along Irish Settlement Road
PH3	44.60069	-75.2085	Along Irish Settlement Road

Table 2. Aquatic surveys of Upper and Lower Lakes WMA.

Waypoint	Latitude	Longitude	Throw	Depth	# of Species	# of Invasive	Invasive Species Present	Notes
HPA2	44.58062	-75.3113	1	3 feet	2	0		
			2	3.5 feet	3	0		
HPA9	44.62075	-75.2339	1	2 feet	3	0		
HPA18	44.57573	-75.3064	1	1.5 feet	3	1	Frogbit	

Table 3. HPA's surveyed in Upper and Lower Lakes WMA.

Waypoint	Latitude	Longitude	Land Use	HPA Type	Species
HPA1	44.5795	-75.30921	Bird Watching Area	Terrestrial	Wild Parsnip
HPA2	44.58062	-75.31129	Fishing access	Terrestrial & Aquatic	Wild Parsnip, Purple Loosestrife
HPA3	44.59176	-75.29948	Indian Creek Nature Center Parking area access	Terrestrial	Wild Parsnip
HPA4	44.60398	-75.28749	East trailhead and parking area for Indian Creek Nature Center	Terrestrial	Wild Parsnip
HPA5	44.61265	-75.27345	DEC gated road	Terrestrial	Wild Parsnip
HPA6	44.61808	-75.27171	Field access road pull-off	Terrestrial	Wild Parsnip
HPA7	44.62759	-75.2609	Unmaintained dirt track road	Terrestrial	Wild Parsnip
HPA8	44.61923	-75.24302	Parking area	Terrestrial	Wild Parsnip
HPA9	44.62075	-75.23395	Car top boat launch	Terrestrial & Aquatic	Wild Parsnip, Frogbit, Purple Loosestrife
HPA9P	44.61947	-75.22699			
HPA10	44.6215	-75.22673	Boat launch ramp and parking area	Terrestrial & Aquatic	Wild Parsnip
HPA11	44.61808	-75.21862	Wetland with ring road	Terrestrial	Wild Parsnip
HPA12	44.6088	-75.2122	Parking area	Terrestrial	Wild Parsnip
HPA13	44.60689	-75.20872	Field access road pull-off	Terrestrial	Wild Parsnip
HPA14	44.59195	-75.23013	DEC gated road	Terrestrial	Wild Parsnip
HPA15	44.57219	-75.26858	Power line road pull-off	Terrestrial	Wild Parsnip, Buckthorn
HPA16	44.56622	-75.28272	DEC gated road	Terrestrial	Wild Parsnip, Purple Loosestrife
HPA17	44.5648	-75.29763	DEC gated road	Terrestrial	Wild Parsnip

HPA18	44.57573	-75.30641	Parking area for bird sanctuary	Terrestrial & Aquatic	Wild Parsnip, Purple Loosestrife
HPA19	44.57772	-75.30597	Handicap trail access to bird blind	Terrestrial	Frogbit