

2015 Field Survey
Tug Hill Invasive Species Prevention Zone (ISPZ)

SLELO-PRISM (HWA) Early Detection Surveillance

June 12th and 16th, 2015

Report prepared by Elizabeth MacEwen and Caitlin Muller, 6/22/2015



Figure 1. Giant Hogweed found along the southeastern corner of the Tug Hill ISPZ. Photo taken by Elizabeth MacEwen.

Summary

The Tug Hill Invasive Species Prevention Zone (ISPZ) was surveyed by the SLELO-PRISM Early Detection field crew on June 12th and June 16th specifically looking for signs of Hemlock Woolly Adelgid (HWA). Hemlock Woolly Adelgid (*Adelges tsugae*) is on the SLELO-PRISM Prevention “watch-list” and can devastate forest habitats. It has been detected in a neighboring PRISM, the Finger Lakes PRISM, but not known to be in the SLELO-PRISM currently. Other invasive species were also surveyed for.

The crew traveled along the perimeter, following a similar path that previous field crews used during their early detection surveillance. A few other species of concern were noticed outside of the I.S.P.Z. and noted. Wild parsnip (*Pastinaca sativa*) and buckthorn spp. (*Rhamnus* spp.) were prevalent throughout the survey and were marked to show large patches. Giant Hogweed (*Heracleum mantegazzianum*) was found at a previously recorded location, and referred to our Rapid Response team for treatment (Figure 1). On June 15th, the Rapid Response Team visited this location and dug up the plants. This site had one large plant with a few smaller plants (Figure 2). A site was found with an abnormally large Cow parsnip patch that looked very similar to Giant Hogweed. This site was reported to the Giant Hogweed Hotline to be handled by the DEC.



Figure 2. Large Giant Hogweed plant found at Waypoint 048. Photo taken by Elizabeth MacEwen.

Rapid Response

On June 15th, the Rapid Response Team visited Site 48 and hand-dug five newly discovered **Giant Hogweed** plants.

SLELO-PRISM
c/o The Nature Conservancy
269 Ouderkirk Road. Pulaski, NY 13142
Rob Williams, Coordinator

Swallow-wort spp. (*Cynanchum* spp.) was found at a previously recorded site from 2014. This patch was larger than previously noted (Figure 3). Although the location was slightly off of the ISPZ, the early detection crew returned to pull the plants on June 18th and the plants were disposed of (Figure 4).

Rapid Response

On June 13th, the Early Detection Team visited Site 51 and hand-pulled several **swallow-wort** plants.

No prevention “watch-list” species were recorded during this survey. Very few hemlock stands were found. Many of the stands that were seen include balsam, spruce, and various pines. None of the typical signs of HWA were observed.



Figure 3. The patch of swallow-wort found at Waypoint 051.



Figure 4. A close-up view of the swallow-wort plant found at Waypoint 051.

Table 1: Waypoints where invasive plants were observed in 2015.

Waypoint	Latitude	Longitude	Notes	Species	2015 Field Notes
47	43.6704	-75.503324	Roadside	Buckthorn	Large patch
48	43.48501	-75.554836	Roadside	Giant Hogweed	Small patch remaining from 2014, hand dug.
51	43.43258	-75.662564	Roadside, bridge	Swallow-wort	Small patch, hand pulled
52	43.77428	-75.851616	Roadside clearing	Wild parsnip	Large patch

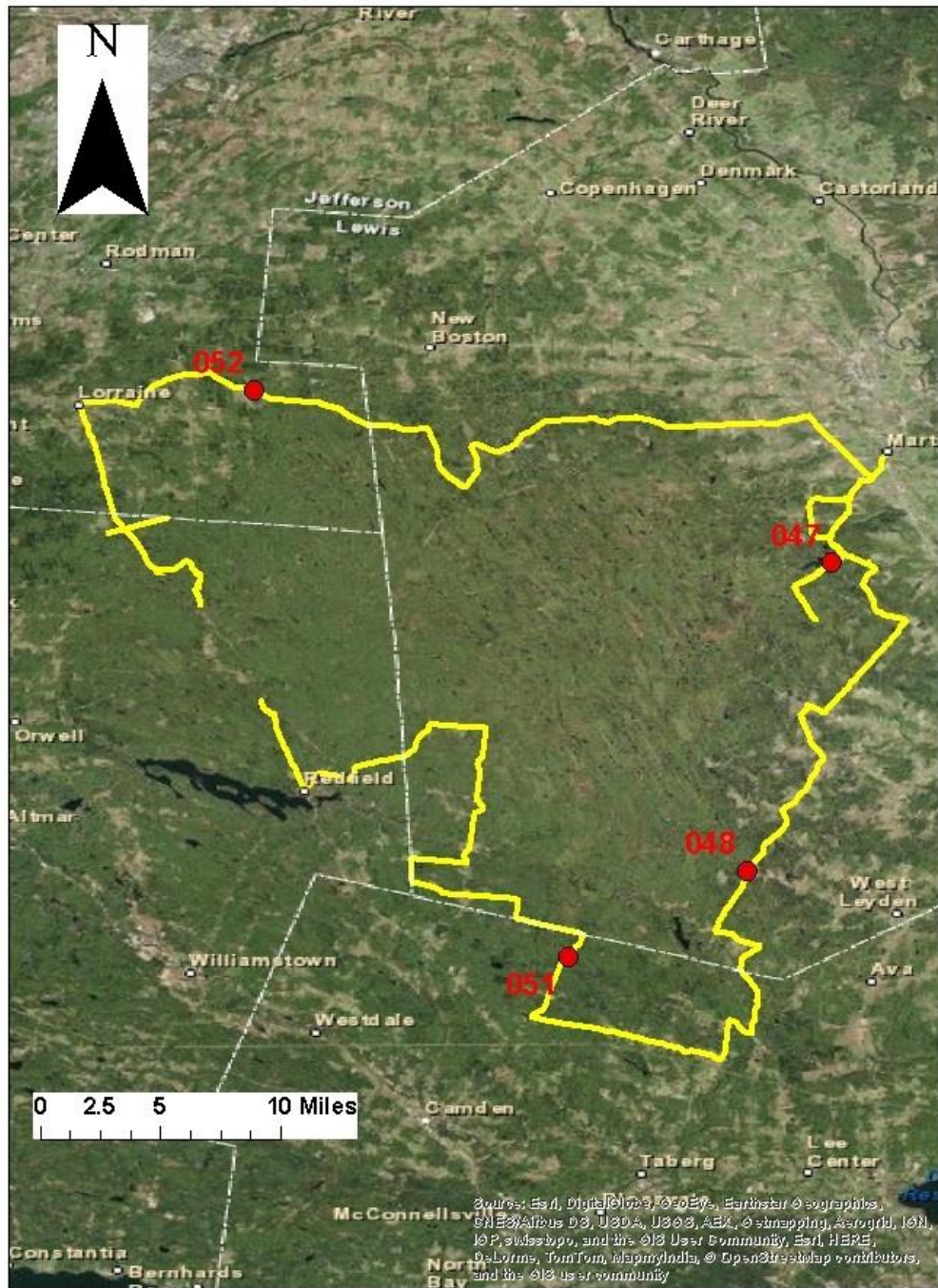


Figure 5. Map of the path taken during the ISPZ along with GPS waypoints where invasives were encroaching the I.S.P.Z. perimeter.

SLELO-PRISM
 c/o The Nature Conservancy
 269 Ouderkirk Road, Pulaski, NY 13142
 Rob Williams, Coordinator