

Special Note

The partners of the SLELO PRISM have identified 24 Priority Conservation Areas on which we conduct early detection surveillance on a two year rotation. This report is to be considered as an addendum to the original field report.

2015 Addendum to
Little John Wildlife Management Area

SLELO-PRISM Early Detection Surveillance
June 4th-5th, 11th-12th and 17th-19th 2015



Figure 1: Panoramic view of wetlands in Little John WMA. Photo taken by Elizabeth MacEwen.

Report prepared by Elizabeth MacEwen and Caitlin Muller on 6/23/15

Summary:

The field crew surveyed Little John Wildlife Management Area following a similar path to the 2013 field crew (Table 1). Surveying was conducted on Routes 5A and 5B within the management area as well as roads bordering the area. The snowmobile trails were also surveyed, while some sections were not completed due to impassable conditions. Due to technical difficulties, not all of the tracks were recorded on the GPS unit. Previously established HPA's were re-visited to note any invasive species of concern (Table 2).

Hemlock stands along the snowmobile trails and main roads were examined and noted in the GPS unit for future monitoring of Hemlock Woolly Adelgid (HWA). In all stands surveyed no signs of HWA were present. **All sites that had Phragmites present in 2013 had no plants present in this survey** (Figure 2). Phragmites was seen at a new site along Route 17, but may be located on private property. A previously recorded site of coltsfoot and periwinkle was seen again in 2015. Buckthorn was present in many areas throughout Littlejohn. Some large patches were recorded.



Figure 2: Treated Phragmites site from 2013, no Phragmites present in 2015. Photo taken by Caitlin Muller

A population of Japanese Knotweed was seen during this survey on Littlejohn Drive at a previously noted site in 2013. The population was on both sides of the road (Figure 3). Another previously recorded sighting on Blount Mill Drive was seen again in 2015 (Figure 4). This sighting is on private land but is of concern due to the proximity to the entrance of the management area.



Figure 3. Japanese Knotweed observed on Littlejohn Drive.
Photo taken by Elizabeth MacEwen



Figure 4. Japanese Knotweed observed on Blount Mill Drive
Photo taken by Caitlin Muller

Table 1: Paths and trails surveyed in 2015.

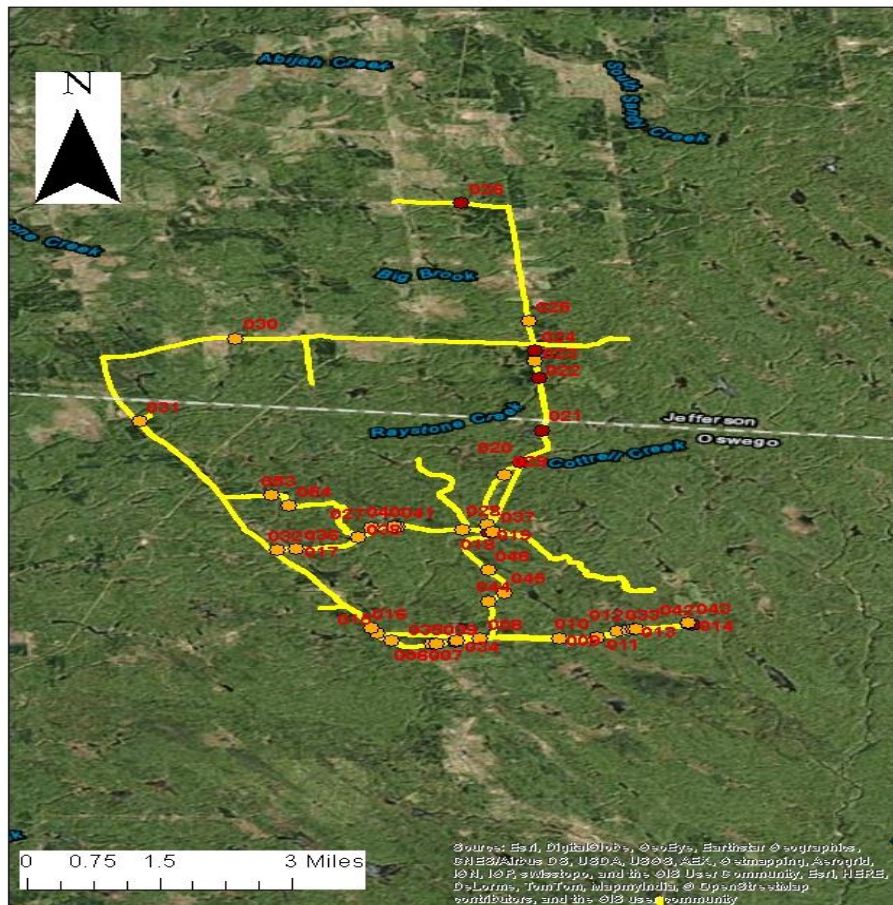


Table 2. Coordinates of HPA's, invasive species sighting, and newly identified Hemlock stands.
New sites are displayed in yellow.

Waypoint	Latitude	Longitude	Notes	Species	Notes
6	43.64567	-75.8917		Cow Parsnip	
7	43.64552	-75.8813	HPA 3	Buckthorn	
8	43.64612	-75.8771		Buckthorn	
9	43.64624	-75.8641		Buckthorn	
10	43.64637	-75.8579		Buckthorn	
11	43.64787	-75.8545		Japanese Knotweed	
12	43.64813	-75.8527		Japanese Knotweed	
13	43.64825	-75.8519		Dead Japanese Knotweed	
14	43.64927	-75.8422	HPA 11	None	
16	43.64845	-75.8949		Phragmites	May be on Private property
17	43.66633	-75.9073		Buckthorn	
18	43.67057	-75.8801		Hemlock stand	No signs of HWA
19	43.67022	-75.8757	HPA 2	Buckthorn	
20	43.68596	-75.8706	HPA 4	None	
21	43.69308	-75.8669	HPA 5	None	
22	43.70494	-75.8675	HPA 6	Buckthorn	
23	43.70875	-75.868		Buckthorn	
24	43.71111	-75.8682	HPA 7	Buckthorn	
25	43.71774	-75.8692		Hemlock stand	No signs of HWA
26	43.7444	-75.8801	HPA 1	None	
27	43.67101	-75.8949		Hemlock stand	No signs of HWA
28	43.67171	-75.8759		Hemlock stand	No signs of HWA
29	43.68301	-75.873		Large Hemlock stand	Some mixed species, No signs of HWA
30	43.71381	-75.9173		Coltsfoot and Periwinkle	Still in dense mats
31	43.69504	-75.9332	HPA 9	None	
32	43.66607	-75.9105		Japanese Knotweed	Small patch
53	43.67837	-75.9113		Hemlock stand	No signs of HWA
54	43.67607	-75.9085		Hemlock stand	No signs of HWA