

Special Note

The partners of the SLELO PRISM have identified 24 Priority Conservation Areas on which we conduct early detection surveillance on a two year rotation. This report is to be considered as an addendum to the field reports from 2013 and 2015. The previous reports are attached to the end of this report.

**2017 Field Survey
Addendum to
Guffin Bay Water Chestnut (*Trapa natans*)
Follow-Up Monitoring**



Figure 1: Panoramic view of Fish Creek WMA. Photo taken by Bryna Daykin.

**SLELO-PRISM Early Detection Surveillance
July 6th 2017**

Report prepared by Alicia Wood and Bryna Daykin, 7/10/2017

Survey Methods and Observations

Guffin Creek was surveyed in July of 2017 by the SLELO Early Detection Team (**Figure 1**) to determine the abundance and spread of water chestnuts (**Figure 2**) within the bay. The survey involved counting the number of water chestnuts found within the bay. Hand pulls were completed at sites 1-8 (**Figure 3; Table 1**), where the populations of water chestnuts were less dense. **Volunteers will be required to pull water chestnuts at the remaining sites.** The location of each site was marked using a handheld Garmin GPSmap 60CSx.



Figure 2: Water Chestnut found at Guffin Bay. Blue arrow points to the plant's seedpod. Photo taken by Alicia Wood.

The water levels in Guffin Bay were much higher than in previous years due to greater precipitation rates in 2017. Most docks along the creek were underwater, indicative of this water level increase. New populations of water chestnuts were found within the Northeastern inlet of Guffin creek, which were not found in 2013 and 2015. There has been a drastic increase in water chestnut plants within the creek in the past four years. While the 2013 survey found only 80 plants and the 2015 survey found 590 plants, this year's survey discovered 835 water chestnut plants. The populations of water chestnut were most dense (≥ 50) at sites 9, 10, 15, 44, and 46 (Figure 3; Table 1).

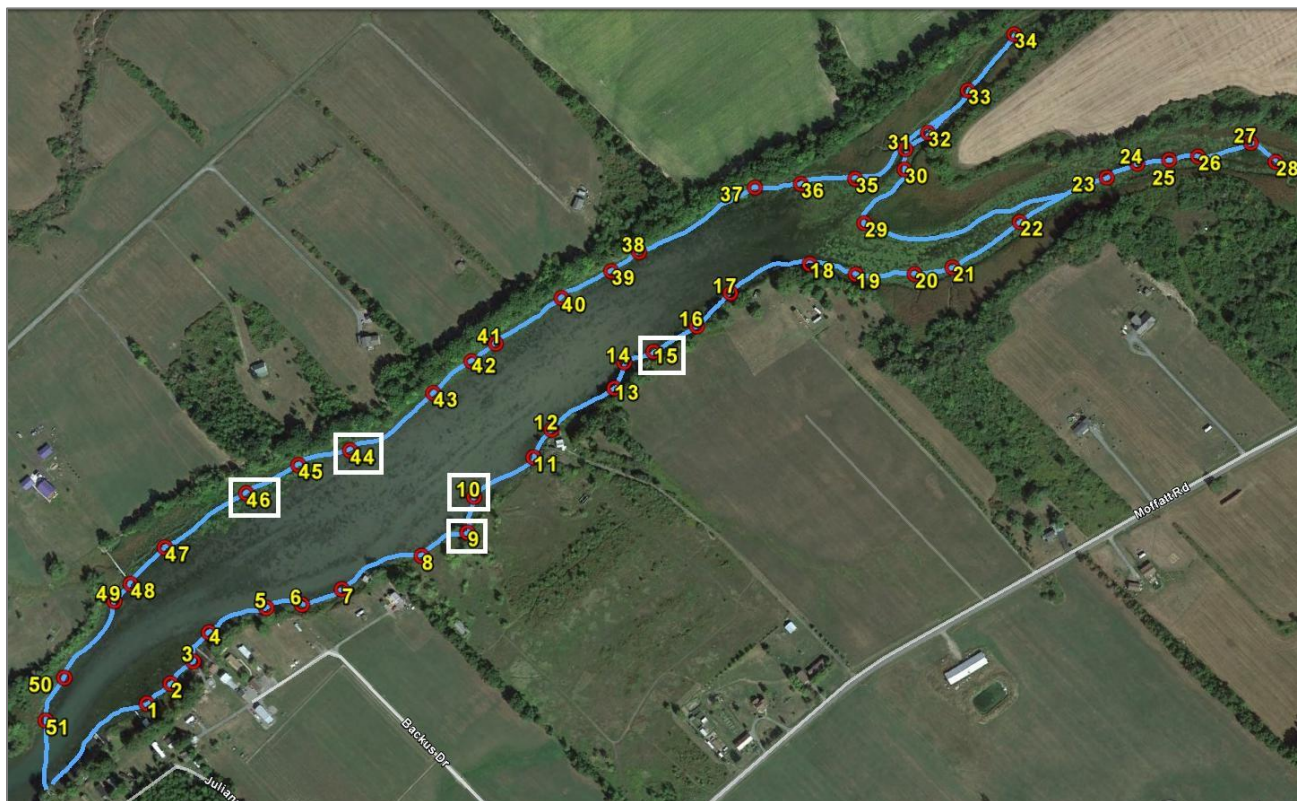


Figure 3: Survey Route of the water chestnut assessment at Guffin Bay. The white boxes indicates sites with the highest density of water chestnuts (≥ 50).

Table 1: Coordinates of water chestnut populations along with the amount seen at each site.

Site	Latitude	Longitude	Number of Water Chestnut Plants
1	44. 03970	-76. 11954	6
2	44. 03993	-76. 11929	2
3	44. 04018	-76. 11906	2
4	44. 04048	-76. 11894	5

SLELO-PRISM

c/o The Nature Conservancy

269 Ouderkirk Road. Pulaski, NY 13142

Rob Williams, Coordinator

5	44. 04082	-76. 11826	15
6	44. 04092	-76. 11780	5
7	44. 04114	-76.11732	21
8	44.04161	-76. 11636	10
9	44. 04192	-76. 11582	70
10	44. 04227	-76. 11584	60
11	44. 04276	-76. 11516	9
12	44. 04306	-76. 11500	12
13	44. 04358	-76. 11428	8
14	44. 04385	-76. 11422	36
15	44. 04401	-76. 11386	50
16	44. 04434	-76. 11335	25
17	44. 04473	-76. 11299	10
18	44. 04516	-76. 11201	10
19	44.04516	-76.11136	7
20	44.04528	-76.11057	5
21	44.04542	-76.11008	3
22	44.04600	-76.10929	5
23	44.04661	-76.10823	18
24	44.04681	-76.10785	2
25	44.04691	-76.10743	10
26	44.04700	-76.10705	16
27	44.04724	-76.10637	1
28	44.04710	-76.10599	7
29	44.04568	-76.11138	8
30	44.04629	-76.11098	5
31	44.04649	-76.11102	3
32	44.04670	-76.11076	14
33	44.04720	-76.11033	3
34	44.04785	-76.10985	2
35	44.04610	-76.11162	8
36	44.04594	-76.11234	3
37	44.04581	-76.11295	5
38	44.04495	-76.11433	14
39	44.04471	-76.11465	12
40	44.04435	-76.11524	8
41	44.04378	-76.11599	21

SLELO-PRISM

c/o The Nature Conservancy
269 Ouderkirk Road. Pulaski, NY 13142
Rob Williams, Coordinator

42	44.04356	-76.11626	12
43	44.04318	-76.11668	22
44	44.04247	-76.11762	71
45	44.04223	-76.11826	35
46	44.04186	-76.11887	100
47	44.04119	-76.11978	26
48	44.04078	-76.12012	5
49	44.04059	-76.12028	13
50	44.03978	-76.12070	3
51	44.03935	-76.12081	12
Total			835

SLELO-PRISM
c/o The Nature Conservancy
269 Ouderkirk Road. Pulaski, NY 13142
Rob Williams, Coordinator