

**Special Note**

*The partners of the SLELO PRISM have identified 24 Priority Conservation Areas on which we conduct early detection surveillance on a two year rotation. This report is to be considered as an addendum to the original field report.*

**2015 Field Survey  
Addendum to  
French Creek Wildlife Management Area**

SLELO-PRISM Early Detection Surveillance  
July 24<sup>th</sup> and 27<sup>th</sup>, 2015

*Report prepared by Caitlin Muller and Ben Hansknecht on July 28<sup>th</sup>, 2015*



Figure 1. Panoramic view of Fish Creek Wildlife Management Area at HPA 4. Photo by Caitlin Muller

**Summary:**

The Early Detection Field Team surveyed previously established HPA's in French Creek Wildlife Management Area (WMA), (Figure 1) for new occurrences of invasive species. On July 24<sup>th</sup> a terrestrial survey was conducted on previously established HPA's. One new terrestrial HPA (HPA 8) was added to the survey. HPA 8 is marked on the French Creek WMA map as a gated road with a parking area, which makes it highly susceptible to invasives as a locus for automobile traffic.

**No Prevention "Watch-list" species were found in the 2015 survey.** Wild parsnip (*Pastinaca sativa*) was present in areas surrounding the WMA and at HPA's 1, 2, 3, 5, and 8. Common buckthorn (*Rhamnus cathartica*) was present at HPA 8 along the gated road and at some points surrounding the WMA. Areas with wild parsnip should be of high concern because it can overtake areas quickly. French Creek had a large population of milkweed overall, though at each

SLELO-PRISM  
c/o The Nature Conservancy  
269 Ouderkirk Road. Pulaski, NY 13142  
Rob Williams, Coordinator



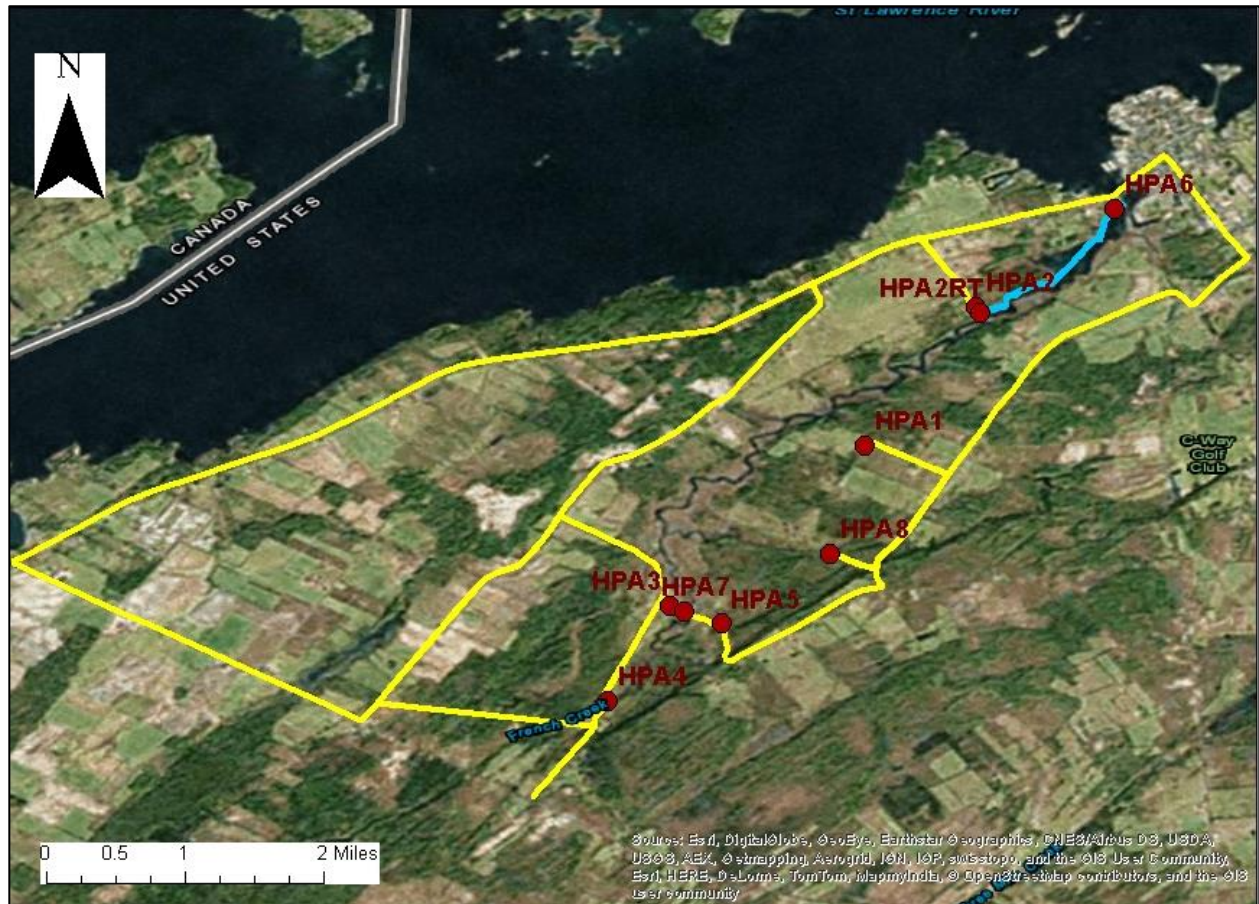
**Figure 2.** Eurasian water milfoil found at HPA 2. Photo taken by Caitlin Muller

site individuals were sparsely distributed. These plants could be displaced by the presence of wild parsnip.

Aquatic surveys were conducted on July 27<sup>th</sup> and consisted of four rake-tosses. HPA 2 and 6 required the use of canoes to survey for aquatic invasive species. European frog-bit (*Hydrocharis morsus-ranae*) was seen at the four aquatic HPA's. HPA's 2 and 6 had populations of Eurasian water milfoil (*Myriophyllum spicatum*), which was also seen in varying population sizes along the path traveled by canoe (Figure 2). At HPA 6 the 2013 field crew had observed a large population of Phragmites (*Phragmites spp.*) along the perimeter along with purple loosestrife (*Lythrum salicaria*) (Figure 3.). These populations were still present in the 2015 survey.



**Figure 3.** Phragmites and purple loosestrife found at HPA 6. Photo taken by Caitlin Muller



**Figure 4.** Paths taken at French Creek Wildlife Management Area. Yellow represents the terrestrial survey while blue symbolizes the aquatic survey.

Continued...

SLELO-PRISM  
 c/o The Nature Conservancy  
 269 Ouderkirk Road, Pulaski, NY 13142  
 Rob Williams, Coordinator

| Waypoint | Description                                    | Latitude | Longitude  | Species                                                         | Notes                                  |
|----------|------------------------------------------------|----------|------------|-----------------------------------------------------------------|----------------------------------------|
| HPA1     | Grand Road Parking Area                        | 44.20586 | -76.115533 | Wild Parsnip                                                    |                                        |
| HPA2     | Route 12E access road and roof-top boat access | 44.22037 | -76.103932 | Frobit, Eurasian Water Milfoil, Wild Parsnip                    |                                        |
| HPA3     | Bevins Road Parking Area                       | 44.18911 | -76.135979 | Wild Parsnip                                                    |                                        |
| HPA4     | French Creek Road Bridge                       | 44.17916 | -76.142391 | Frogbit                                                         | Bridge still closed                    |
| HPA5     | Bevins Road Parking Area                       | 44.18725 | -76.13054  | Wild Parsnip                                                    |                                        |
| HPA6     | Area of high boat access                       | 44.23062 | -76.08946  | Frogbit, Eurasian Water Milfoil, Phragmites, Purple Loosestrife | French Creek Marina and Private Marina |
| HPA7     | Bevins Road Bridge and Water Access            | 44.18848 | -76.134393 | Frogbit                                                         |                                        |
| HPA8     | DEC gated road (Commode Road)                  | 44.19457 | -76.11921  | Wild Parsnip, Common Buckthorn                                  | New HPA                                |

**Table 1.** Terrestrial HPA's surveyed in 2015.

SLELO-PRISM  
c/o The Nature Conservancy  
269 Ouderkirk Road. Pulaski, NY 13142  
Rob Williams, Coordinator

| Waypoint | Latitude | Longitude | Depth  | # of Species | # of invasive | Invasive species present     | Notes                                                                                        |
|----------|----------|-----------|--------|--------------|---------------|------------------------------|----------------------------------------------------------------------------------------------|
| HPA 2    | 44.21972 | -76.10354 | 5 feet | 2            | 0             |                              | Visual:<br>Frogbit,<br>Eurasian<br>Water<br>Milfoil                                          |
|          |          |           |        | 3            | 1             | Eurasian<br>Water<br>Milfoil |                                                                                              |
| HPA 4    | 44.17916 | -76.14239 | 3 feet | 3            | 0             |                              | Visual:<br>Frogbit                                                                           |
|          |          |           |        | 4            | 1             | Frogbit                      |                                                                                              |
| HPA 6    | 44.23062 | -76.08946 | 3 feet | 1            | 0             |                              | Visual:<br>Frogbit,<br>Eurasian<br>Water<br>Milfoil,<br>Phragmites,<br>Purple<br>Loosestrife |
|          |          |           |        | 4            | 1             | Eurasian<br>Water<br>Milfoil |                                                                                              |
| HPA 7    | 44.18848 | -76.13439 | 5 feet | 3            | 0             |                              | Visual:<br>Frogbit                                                                           |
|          |          |           |        | 2            | 0             |                              |                                                                                              |

**Table 2.** Aquatic HPA's surveyed with rake-tosses

SLELO-PRISM  
c/o The Nature Conservancy  
269 Ouderkirk Road. Pulaski, NY 13142  
Rob Williams, Coordinator