

Special Note

The partners of the SLELO PRISM have identified 24 Priority Conservation Areas on which we conduct early detection surveillance on a two year rotation. This report is to be considered as an addendum to the field reports from 2013 and 2015. The previous reports are attached to the end of this report.

**2017 Field Survey
Addendum to
French Creek Wildlife Management Area**



Figure 1: Panoramic view of Upper and Lower Lakes WMA. Photo taken by Alicia Wood.

**SLELO-PRISM Early Detection Surveillance
July 12-13, 2017**

Report prepared by Bryna Daykin and Alicia Wood, 7/14/2017

Survey Methods and Observations

The French Creek Wildlife Management Area was surveyed in July of 2017 by the SLELO Early Detection Team (**Figure 1**). The survey involved examining highly probable areas (HPAs) for both invasive terrestrial and aquatic species. To determine which aquatic species were present at HPAs, the rake toss method was used. For this, a double sided rake was tossed off both ends of the canoe to collect aquatic vegetation. The vegetation attached to the rake was identified and determined to be invasive or native. Visual observations were used for both aquatic and terrestrial surveying to find and identify invasive species at the HPAs. The location of each HPA was marked using a handheld Garmin GPSmap 60CSx.

No 'Prevention "Watch-list" Species' were found in the 2017 survey.

HPAs 1-8 were resurveyed from the 2015 field report (Table 1; Figure 2). Four new parking lots were added as terrestrial HPAs (9-10 & 12-13). Eight new aquatic HPAs (11 & 14-20) were additionally added to the 2017 field survey. Note that higher waters were observed in 2017 compared to previous years. This change in water depth may have affected our visual observations during the aquatic survey.

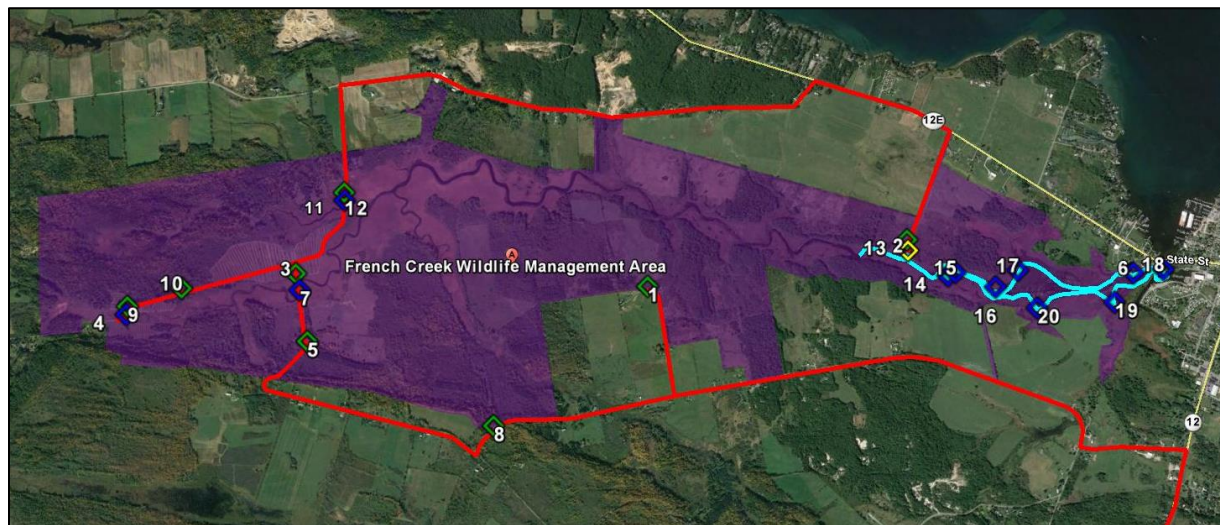


Figure 2: Survey route for the aquatic and terrestrial HPAs of Upper and Lower Lakes WMA. The red line indicates the driving route taken to get to each terrestrial HPA, while the blue line indicates the canoe route taken to get to each aquatic HPA. Green dots were surveyed terrestrially, blue dots were surveyed aquatically, while yellow dots were surveyed both terrestrially and aquatically.

The following 'Target Management Species' were found during the field survey: Eurasian water milfoil (*Myriophyllum spicatum*), phragmites (*Phragmites australis*), and common buckthorn (*Rhamnus cathartica*). The following 'General Species of Concern' were also found: curly leaf pondweed (*Potamogeton crispus*), European frogbit (*Hydrocharis morsus-ranae*), coltsfoot (*Tussilago farfara*), honeysuckle (*Lonicera spp.*), and wild parsnip (*Pastinaca sativa*). In addition to this, the invasive Japanese beetle (*Popillia japonica*) was found (Table 1; Table 2).



Figure 3: Curly Leaf Pondweed. Photo taken by Bryna Daykin.



Figure 4: Coltsfoot found at HPA 8. Photos taken by Alicia Wood.

Eurasian water milfoil was found in HPAs 2, 18 and 20. Common buckthorn was found in HPAs 1-2, 4, 8 and 12. Curly leaf pondweed was observed in HPAs 2, 7 and 19 (**Figure 3**). European frogbit was seen in HPAs 2, 4, 7, 11, 15-16 and 19-20. Coltsfoot was found in a dense patch within HPA 8 (**Figure 4**). Honeysuckle was observed at every terrestrial HPA surveyed (**Figure 5**). Wild parsnip was found in HPAs 1-5. Multiple Japanese beetles were found within HPA 5 (**Figure 6**).



Figure 5: Honeysuckle found at French Creek WMA. Photos taken by Alicia Wood.

SLELO-PRISM

c/o The Nature Conservancy
269 Ouderkirk Road, Pulaski, NY 13142
Rob Williams, Coordinator

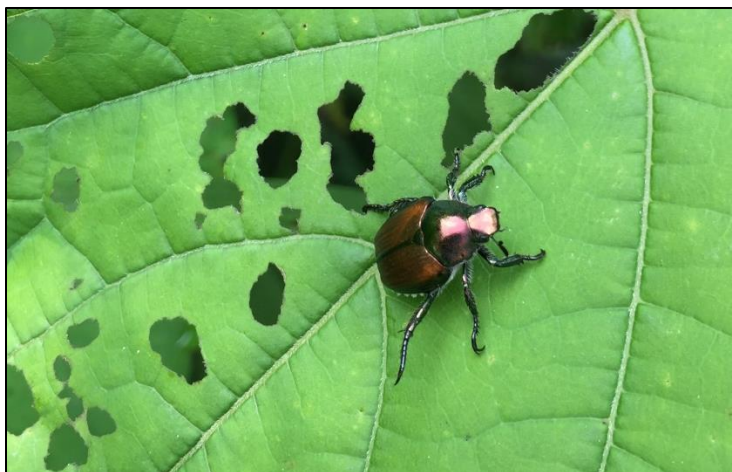


Figure 6: Japanese Beetle found at HPA 5. Photo taken by Bryna Daykin.

Phragmites was found in a large patch near French Creek Marina, between HPAs 6 and 18 (**Figure 7**). Dense patches of Eurasian water milfoil and curly leaf pondweed were found in the water to the left of the phragmites.

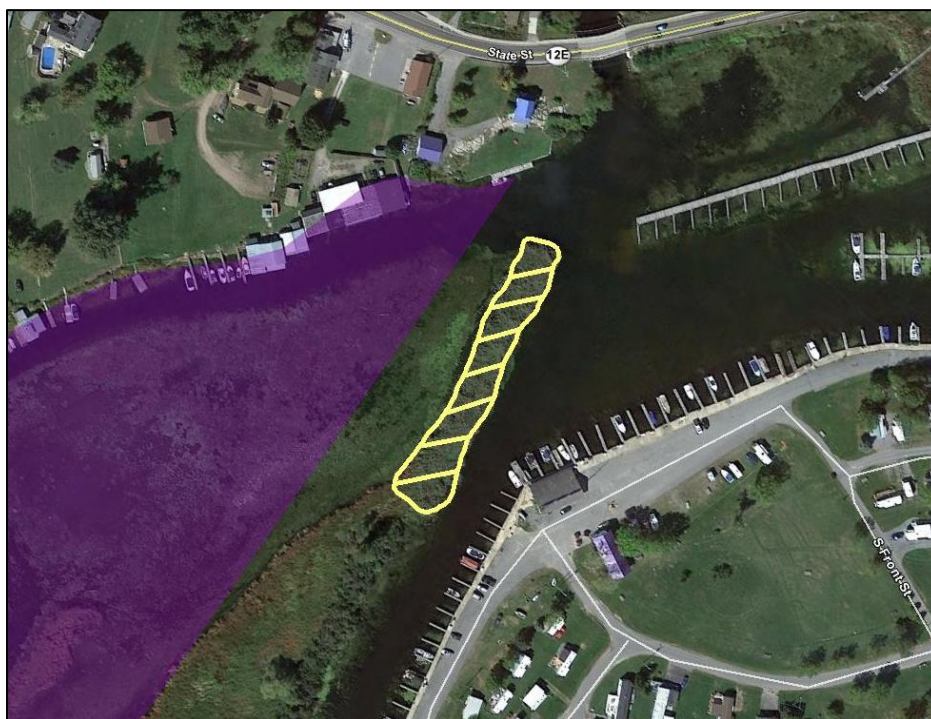


Figure 7: Patch of Phragmites found near French Creek Marina.

SLELO-PRISM
c/o The Nature Conservancy
269 Ouderkerk Road. Pulaski, NY 13142
Rob Williams, Coordinator

Table 1: Descriptions, coordinates, and invasive species sightings at each HPA at Mud Lake. New HPAs sampled only in 2017 are highlighted in yellow.

HPA	Habitat Description	Latitude	Longitude	Species
1	Grant Rd. Parking Area	44.20584	-76.1156	CB, WP, HS
2	Route 12E Access Road and Roof top Boat Access	44.22018	-76.10363	CB, WP, HS
3	Bevins Rd. Parking Area	44.18898	-76.1360	WP, HS
5	Bevins Rd. Parking Loop	44.18702	-76.1305	WP, JB, HS
8	DEC Gated Road	44.19457	-76.11921	CF, CB, HS
9	Parking Area	44.17947	-76.14292	HS
10	Parking Area	44.18280	-76.14124	HS
12	Parking Area	44.19449	-76.13920	CB, HS
13	Parking Area	44.22058	-76.10442	HS

Key: WP = Wild Parsnip, CB = Common Buckthorn, CF = Coltsfoot, JB = Japanese Beetle, HS = Honeysuckle

Table 2: Descriptions, coordinates, and invasive species sightings at aquatic HPAs at French Creek WMA. New HPAs sampled only in 2017 are highlighted in yellow.

HPA	Habitat Description	Latitude	Longitude	Throw	Depth (ft)	# Total Spp.	# Inv.	Inv. Type	Visual Invasives
2	Rooftop Boat Access	44.22018	-76.10363	1	4	6	1	FB	<u>Visual:</u> FB
				2		8	2	EWM, CLP	
4	French Creek Rd. Bridge/Fishing Access	44.17911	-76.1424	1	4.5	6	1	FB	<u>Visual:</u> FB, CB
				2		4	1	FB	
6	Area of High Boat Access	44.23039	-76.0896	1	3.5	8	0		<u>Visual:</u> no invasives
				2		7	0		
7	Bevins Rd. Bridge/Fishing Access	44.18855	-76.1346	1	6.5	1	0		<u>Visual:</u> FB
				2		9	2	CLP, FB	

SLELO-PRISM

c/o The Nature Conservancy
269 Ouderkirk Road. Pulaski, NY 13142
Rob Williams, Coordinator

11	2 nd French Creek Rd. Bridge/Fishing Access	44.19421	-76.13860	1	4	2	0		<u>Visual:</u> FB
				2		2	0		
14	Cove with Slow Moving Water	44.22110	-76.09969	1	5	3	0		<u>Visual:</u> no invasives
				2		3	0		
15	Cove with Stagnant Water	44.22160	-76.09951	1	4	10	1	FB	<u>Visual:</u> FB
				2		9	1	FB	
16	Cove with Slow Moving Water	44.22298	-76.09631	1	3.5	3	0		<u>Visual:</u> FB
				2		4	0		
17	Large Cove with Stagnant Water	44.22479	-76.09618	1	4	5	0		<u>Visual:</u> no invasives
				2		5	0		
18	French Creek Marina	44.23203	-76.08817	1	7	3	0		<u>Visual:</u> EWM
				2		4	0		
19	Cove with Stagnant Water	44.22820	-76.08871	1	5	7	1	CLP	<u>Visual:</u> FB, CLP
				2		7	0		
20	Cove with Slow Moving Water	44.22414	-76.09262	1	4	5	0		<u>Visual:</u> FB, EWM
				2		2	0		

Key: FB = European Frogbit, EWM = Eurasian Water Milfoil, CLP = Curly Leaf Pondweed