

Special Note

The partners of the SLELO PRISM have identified 24 Priority Conservation Areas on which we conduct early detection surveillance on a two year rotation. This report is to be considered as an addendum to the original field report.

**2015 Field Survey
Addendum to
Fish Creek Wildlife Management Area**

SLELO-PRISM Early Detection Surveillance
June 24th and 25th, 2015

Report prepared by Elizabeth MacEwen and Caitlin Muller on 6/26/2015



Figure 1. Panoramic view of HPA 1 at Pope Mills Parking Area. Photo taken by Caitlin Muller

Summary:



Figure 2. Purple loosestrife along the trail of HPA 1. Photo by Elizabeth MacEwen

The Early Detection field crew surveyed Fish Creek Wildlife Management Area in June of 2015 (Figure 1). The crew surveyed previously established terrestrial highly probable areas (HPA's) and aquatic sites that were established by the 2013 field crew. At each HPA glossy buckthorn (*Rhamnus frangula*) was present. Most HPA's and roadsides surrounding the Management Area had wild parsnip present. Every water body surveyed had European frogbit (*Hydrocharis morsus-ranae*) present. Smaller creeks along Factory Road had large amounts of frogbit present, which was not noted in the 2013 field report.

At HPA 1 purple loosestrife (*Lythrum salicaria*) was found along the trail and while canoeing to the aquatic sites (Figure 2). HPA 5 also had loosestrife along the creek. Coltsfoot (*Tussilago farfara*) was observed at HPA 3 and HPA 5. A small stand of ash trees was noted though may not be accessible for survey due to being located on private property. It did not show obvious signs of emerald ash borer.

As seen by the 2013 field crew a large patch of Japanese knotweed was spotted before HPA along West Lake Road (Figure 3). The patch was larger than previously observed. At HPA 5 there was a small stand of Eastern hemlock, which would be an ideal spot for future monitoring.



Figure 3. Japanese knotweed found along West Lake Road. Photo taken by Caitlin Muller

One of the aquatic survey points could not be reached at HPA 1 due to the presence of a beaver dam that could not be crossed (Figure 4). A rake toss was done as

close to the beaver dam as the field crew could reach.

At HPA 5 one of the survey points could not be reached due to the overgrowth of shrub willow (*Salivaveae* family) (Figure 5). The new survey point was conducted at a cove near the overgrown shrub willow. This site may need to be re-evaluated due to the rapid conversion of the creek.



Figure 4. Dam blocking a previously sampled point at HPA 1. Photo taken by Elizabeth MacEwen.



Figure 5. Overgrowth of shrub willow. Photo taken by Elizabeth MacEwen.

Waypoint	Latitude	Longitude	Point	Depth	# of Species	# of invasive	Invasive species present	Notes
79	44.51658	75.528738	1	3 feet	2	0		Visual: Frogbit
			2		5	1	Frogbit	
81	44.5203	75.526232	1	2 feet	4	1	Frogbit	Visual: Frogbit
			2		4	1	Frogbit	
82	44.48796	75.573892	1	1.5 feet	1	0		Visual: Frogbit
			2		2	0		
83	44.48622	75.577086	1	4.5 feet	4	1	Frogbit	Visual: Frogbit
			2		4	1	Frogbit	

Table 1. Aquatic survey points



Figure 6. HPA 5 aquatic survey, track seen in blue.



Figure 7. HPA 1 aquatic survey, track seen in blue.

Waypoint	Point	Latitude	Longitude	Species	Notes
65	HPA1- Pope Mills Parking area	44.48494	-75.57594	Frogbit, Glossy buckthorn, Purple loosestrife	
66	HPA1- Pope Mills Handicap Trail	44.48592	-75.57586		
67	HPA2- Route 58 Parking area and Trail	44.49922	-75.58233	Wild parsnip, Glossy buckthorn	
68		44.50671	-75.5822	Large Glossy buckthorn patch	
69		44.51072	-75.57652	Glossy buckthorn, Wild parsnip	
70		44.51291	-75.57405	Glossy buckthorn	
71		44.51314	-75.57378		Some Ash, possibly private property
72	HPA3- Bishop Road Parking Area for Public Hunting	44.52854	-75.54633	Glossy buckthorn, Coltsfoot	
73	HPA4- Lake Road West Parking area	44.53763	-75.52648	Wild parsnip	
74		44.53766	-75.52922	Japanese knotweed	Large patch along road
75		44.543	-75.48529	Frogbit	
76		44.54217	-75.48457	Frogbit	Along all of Factory Rd.
77	HPA6- Factory Road Intersection Parking area	44.5401	-75.48252	Wild parsnip	
78	HPA5- Route 184 Parking area and Trail	44.51839	-75.52642	Wild parsnip, Frogbit, Coltsfoot	Some Hemlock along path to creek
80		44.51791	-75.52781	Purple loosestrife	

Table 2. HPA's and Invasive species found.

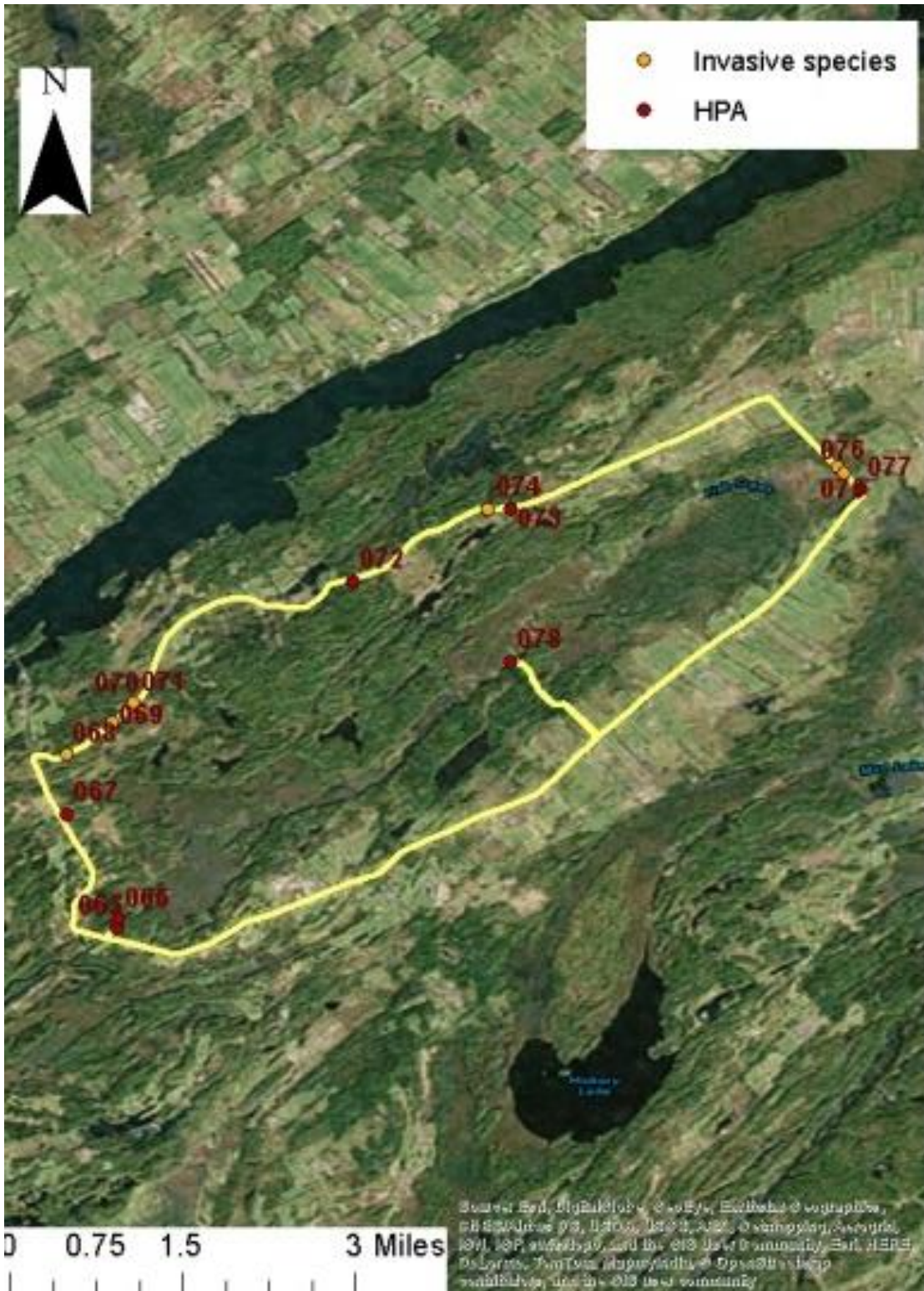


Figure 8. Map of Fish Creek Wildlife Management Area

SLELO-PRISM
 c/o The Nature Conservancy
 269 Ouderkirk Road, Pulaski, NY 13142
 Rob Williams Coordinator